

GLUCO-CARE[®]

PEN NEEDLES

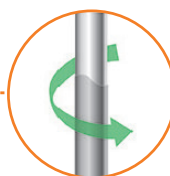


New Design for Improved Skin Contact ...

Ultra-Thin Needle
with triple-facet bevel
for user comfort



Silicone-coating
for gentle needle insertion



Thin-Wall Technology

for optimal flow and
reduced dosage force

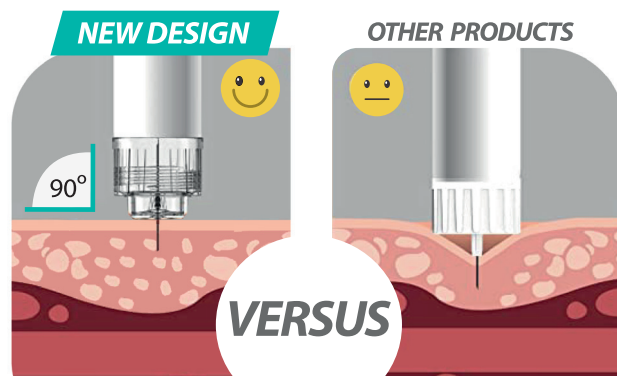


Improved Skin Contact Design

for reduced pressure
on the injection site

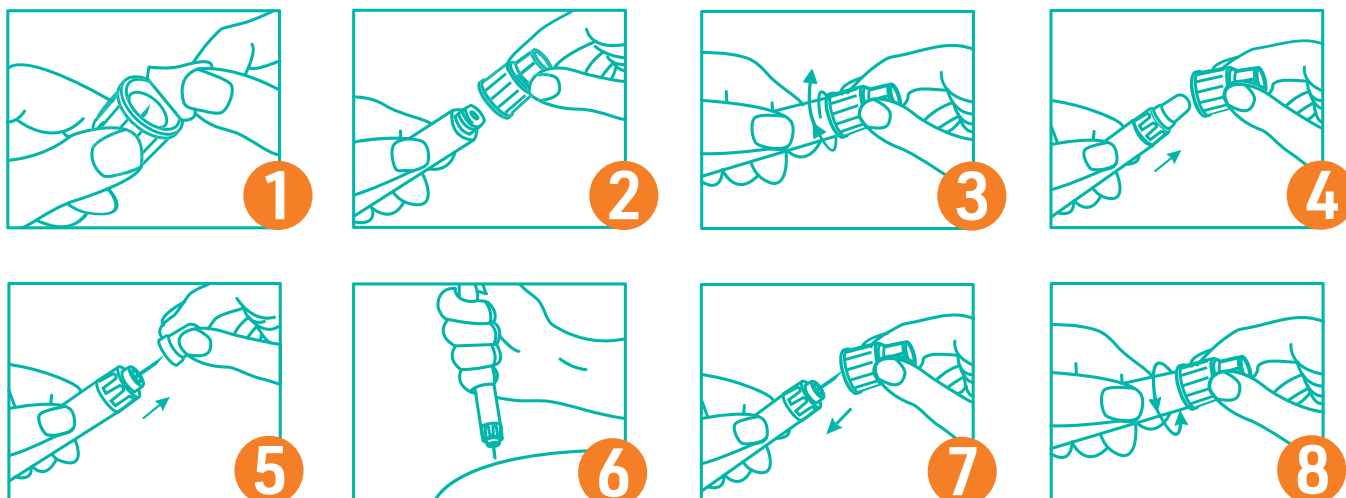
Universal Design

Compatible fit with most pen injectors



INSTRUCTIONS FOR USE

- Easy-to-use design with intuitive handling and simple steps



COMPATIBILITY

Sanofi Aventis	ClikSTAR, SoloSTAR, JuniorSTAR			
Lilly	KwikPen, HumaPen Memoir, HumaPen Luxura HD, HumaPen Luxura, HumaPen Savvio, HumaPen Ergo II			
Novo Nordisk	FlexTouch, NovoPen 3, 4 and 5 Innolet, FlexPen NovoPen Echo, Victoza			
Novo Nordisk	Autopen Classic, Autopen 24			
Berlin Chemie	BerliPen Areo, BerliPen Junior			

ORDERING INFORMATION

- Available in different needle configurations:

REF	PRODUCT	COLOR	PACKAGING
3022	GLUCO-CARE® Pen Needles 32G x 4mm (5/32")		100 pcs / box 1200 pcs / case
3023	GLUCO-CARE® Pen Needles 32G x 5mm (3/16")		100 pcs / box 1200 pcs / case
3024	GLUCO-CARE® Pen Needles 32G x 6mm (1/4")		100 pcs / box 1200 pcs / case
3025	GLUCO-CARE® Pen Needles 33G x 4mm (5/32")		100 pcs / box 1200 pcs / case

WWW.GLUCO-CARE.COM

MediVena®
inspired by innovation

www.medivena.com

AMERICAS:
MediVena
1 Glenlake Parkway, Ste 700, Atlanta, GA 30328, USA
+1 404 514 2586 © info@medivena.com
CUSTOMER SERVICE TOLL FREE: 888 270 6457

EUROPE:
MediVena Sp. z o.o.
Al. Jana Pawła II 27, 00-867 Warsaw, POLAND
+48 695 995 700