

# GLUCO-CARE<sup>®</sup>

## SAFETY LANCETS



*Blood micro-sampling has never been easier...*

**Ergonomic**  
Ergonomic body  
for comfortable grip

**Comfortable**  
Dual spring safety  
activation mechanism  
for enhanced  
patient's comfort



**Easy**  
Wide cap for  
easy twist off

**Compact**  
Optimal size and skin contact  
platform for precise placement  
on the desired test site

### SAFE

- Single-use mechanism prevents sharps injuries and reuse of the device
- Fully enclosed housing ensures that needle is hidden before and after use
- All lancets are Gamma-sterilized and protected with a sterility tab

### COMFORTABLE

- Silicone-coated, ultra-thin needles ideally positioned during skin penetration with double-spring mechanism to reduce vibrations
- Color-coded product versions to meet specific blood sample requirements and address a variety of patient skin types
- Ergonomic design for comfortable grip and secure blood collection

### SIMPLE

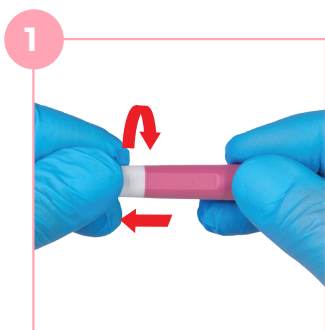
- Easy to use, intuitive operation in 3 steps only, no pre-loading required
- Wide safety cap designed for easy removal - simply twist off the cap and pull it out
- Optimal skin contact area for precise positioning on the desired test site and adequate blood flow



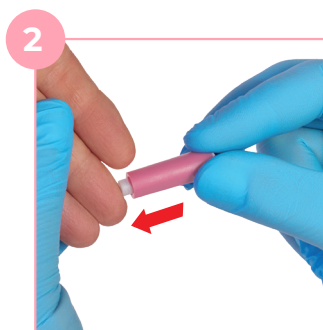
**Every product detail  
designed with ease of  
use and comfort in mind**

## INSTRUCTIONS FOR USE

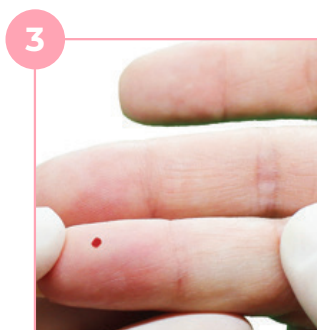
- Intuitive design with only 4 simple steps.  
Blood micro-sampling has never been easier...



**1**  
**Twist Off and Pull Out** the protective cap



**2**  
**Press** against test site to activate the device



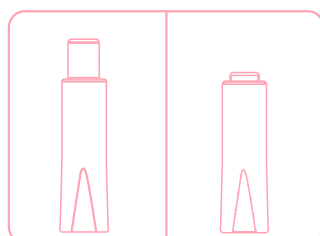
**3**  
Gently apply intermittent pressure near the puncture site **to obtain** the required blood volume



**4**  
**Collect** blood sample and **Discard** the device into sharps container

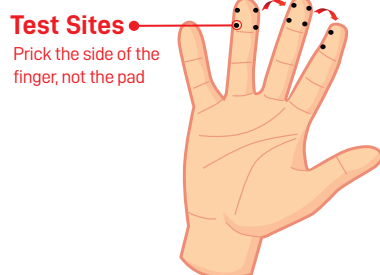
## VISUAL ACTIVATION INDICATOR

Safety tab is removed and white shield remains permanently depressed after use.



**BEFORE USE**

**AFTER USE**



**Test Sites**  
Prick the side of the finger, not the pad

## TEST SITE PREPARATION AND SELECTION

- Patient should wash hands with warm water and soap before blood collection.
- Test site should be disinfected with alcohol swab.
- Blood collection should be performed on the sides of the fingertip, not the pads.
- Index, middle and ring fingers are recommended.
- Apply intermittent pressure on the finger below test site to enhance blood flow if needed.

## PRODUCT SELECTION CHART



REF	DIAMETER (G) X DEPTH (mm/in)	COLOR CODING	PACKAGING
1111	30G x 1.8mm	Purple	100 pcs/box 5,000 pcs / case
1112	28G x 1.8mm	Pink	100 pcs/box 5,000 pcs / case
1113	26G x 1.8mm	Cyan	100 pcs/box 5,000 pcs / case
1114	21G x 1.8mm	Blue	100 pcs/box 5,000 pcs / case

[www.gluco-care.com](http://www.gluco-care.com)