

# Designs & Price Guide



Effortless Living, Designed for You

0439 983 505 | [dualiving.com.au](https://dualiving.com.au)



# Designed for Living, Built with Purpose

DuaLiving is an Australian-made, family-run business specialising in premium flat-packed building solutions tailored for backyard living. With over 40 years of design and construction experience, we deliver personalised spaces that enhance your property and lifestyle.

Our mission is to simplify the building process, offering a seamless experience from concept to construction. We offer three flat-pack design ranges:

## POD RANGE

Adaptable for various uses, including a home office, consulting room, mindful space, teenage retreat, or simply extra space.

## STUDIO RANGE

Ideal as a guest house, extra bedroom, or a care space for loved ones. Its versatile design creates a comfortable, self-contained living area for family members, visitors, or personal care.

## LIVING RANGE

Featuring 1- and 2-bedroom designs, this range addresses the rising cost of living with solutions that boost property value and provide a steady income stream to help offset mortgage payments or cover property expenses. The living range is a smart investment choice.

Timeframes from initial enquiry to completion vary, but we guide you through the process with utmost professionalism to meet your requirements.

Committed to affordability, transparency, and innovation, DuaLiving offers a turnkey service with no hidden costs. We assist clients through the design approval and building process, ensuring efficiency, quality, and a smooth, stress-free journey.

Contact us to explore how we can bring your vision to life. Let us help you create the perfect space to suit your needs, and delivered with care, expertise, and attention to detail.



POD RANGE



**The Possum** | \$22,900\* | P4



**The Wombat** | \$25,900\* | P4



**The Wallaby** | \$29,900\* | P5



**The Platypus** | \$34,900\* | P5

STUDIO RANGE



**The Heron** | \$66,900\* | P6



**The Honeyeater** | \$88,900\* | P6



**The Bowerbird 1** | \$109,000\* | P7

LIVING RANGE



**The Parrot** | \$132,500\* | P8



**The Kookaburra** | \$139,500\* | P8



**The Red Wattle** | \$139,500\* | P9



**The Blackswan** | \$158,500\* | P9



**The Cockatoo** | \$166,000\* | P10



**The Raven** | \$195,000\* | P10



**The Eagle** | \$196,900\* | P11



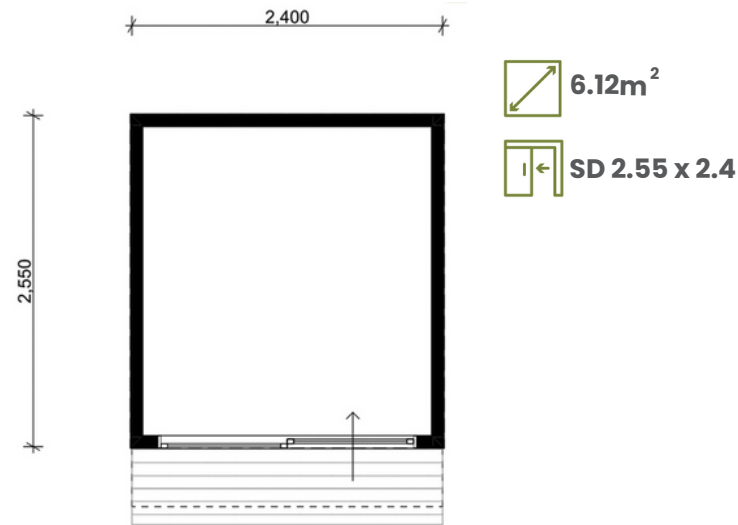
\*Terms and conditions apply (P12)



# The Pod Range



**The Possum** | \$22,900\*



## Standard Inclusions

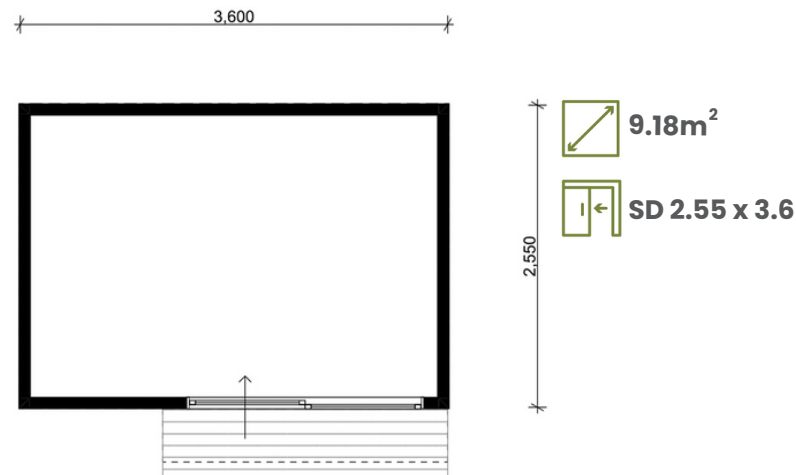
- One downlight
- Two double powerpoints
- Steel frame and base
- Wall and ceiling insulation
- Yellow tongue flooring
- Colorbond roof and gutter
- Installation and delivery

## Optional Extras

- Steps - POA
- Deck/m<sup>2</sup>
- Pergola/m<sup>2</sup>
- Windows from our standard range
- Window awnings - POA
- Electrical upgrades
- External light
- Internal and external painting



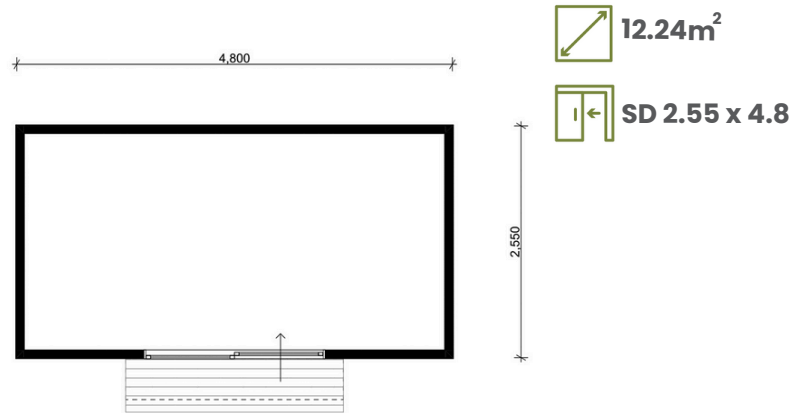
**The Wombat** | \$25,900\*



# The Pod Range



**The Wallaby** | \$29,900\*

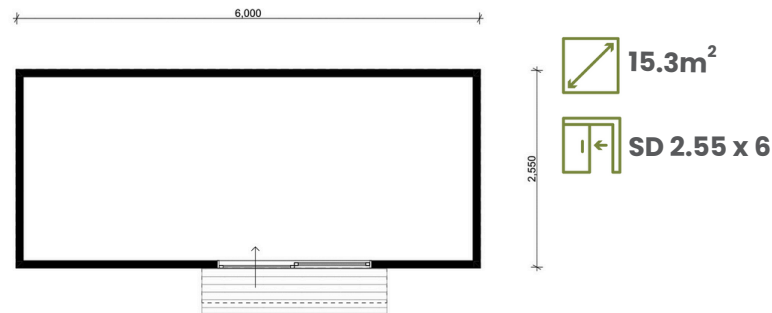


## Standard Inclusions

- One downlight
- Two double powerpoints
- Steel frame and base
- Wall and ceiling insulation
- Yellow tongue flooring
- Colorbond roof and gutter
- Installation and delivery



**The Platypus** | \$34,900\*



## Optional Extras

- Steps - POA
- Deck/m2
- Pergola/m2
- Windows from our standard range
- Window awnings - POA
- Electrical upgrades
- External light
- Internal and external painting

# The Studio Range



**The Heron** | \$66,900\*



## Standard Inclusions

- Bedroom
- Standard Electrical
- Bathroom
- SPC flooring
- Painting external and Internal
- Foundations
- Installation and delivery
- Coffee with sink (The Honeyeater)

## Optional Extras

- Wardrobe
- Steps
- Deck / m2
- Pergola / m2
- Window awnings
- Electrical upgrades



**The Honeyeater** | \$88,900\*



# The Studio Range



**The Bowerbird** | \$109,000\*



## Standard Inclusions

- Bedroom
- Coffee bar with sink
- Standard Electrical
- Bathroom
- SPC flooring
- Painting external and Internal
- Foundations
- Installation and delivery

## Optional Extras

- Wardrobe
- Steps
- Deck / m2
- Pergola / m2
- Window awnings
- Electrical upgrades



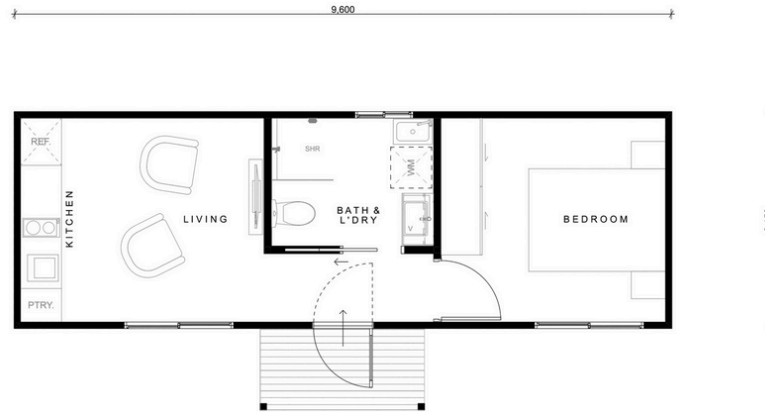


# The Living Range



**The Parrot** | \$132,500\*

30.2m<sup>2</sup> • 1 • 1 • 1



## Standard Inclusions

- Bedroom
- Robe
- Bathroom with laundry
- Kitchen with appliances
- SPC flooring
- Painting external and Internal
- Foundations
- Installation and delivery

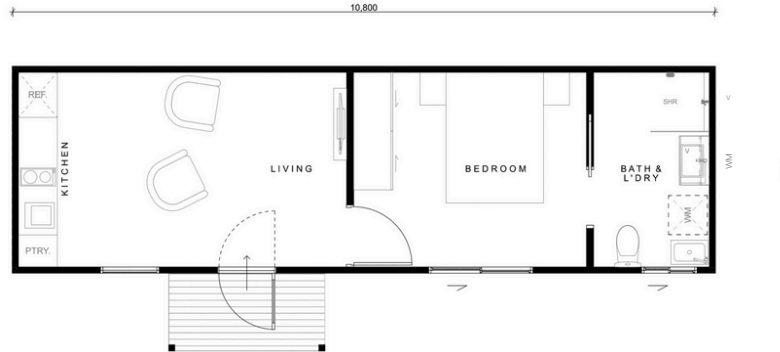
## Optional Extras

- Steps
- Deck/m2
- Pergola/m2
- Window awnings - POA
- Downlight
- Double powerpoint
- Data point
- Ceiling fan
- Ceiling fan with light
- External light



**The Kookaburra** | \$139,500\*

34.02m<sup>2</sup> • 1 • 1 • 1

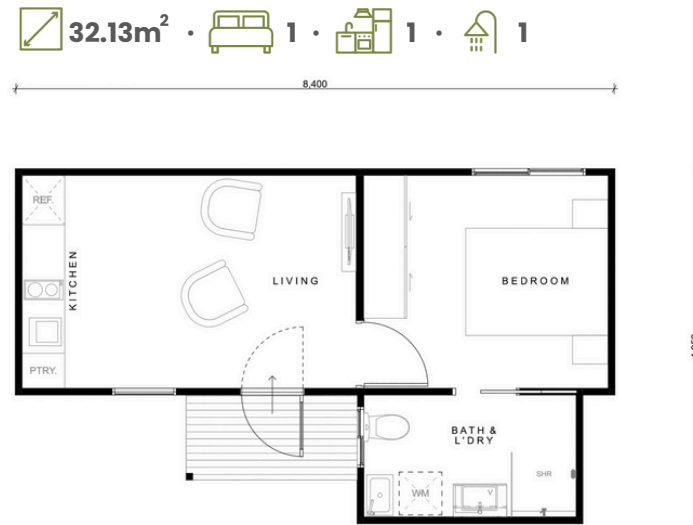




# The Living Range



**The Redwattle** | \$139,500\*



## Standard Inclusions

- Bedroom
- Robe
- Bathroom with laundry
- Kitchen with appliances
- SPC flooring
- Painting external and Internal
- Foundations
- Installation and delivery

## Optional Extras

- Steps
- Deck/m2
- Pergola/m2
- Window awnings - POA
- Downlight
- Double powerpoint
- Data point
- Ceiling fan
- Ceiling fan with light
- External light



**The Blackswan** | \$158,500\*



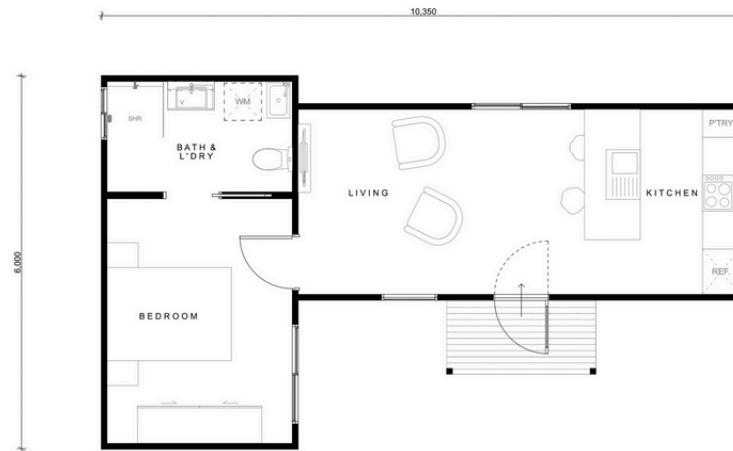
\*Terms and conditions apply (P12)

# The Living Range



**The Cockatoo** | \$166,000\*

39.4m<sup>2</sup> • 1 • 1 • 1



## Standard Inclusions

- Bedroom
- Robe
- Bathroom with laundry
- Kitchen with appliances
- SPC flooring
- Painting external and internal
- Foundations
- Installation and delivery

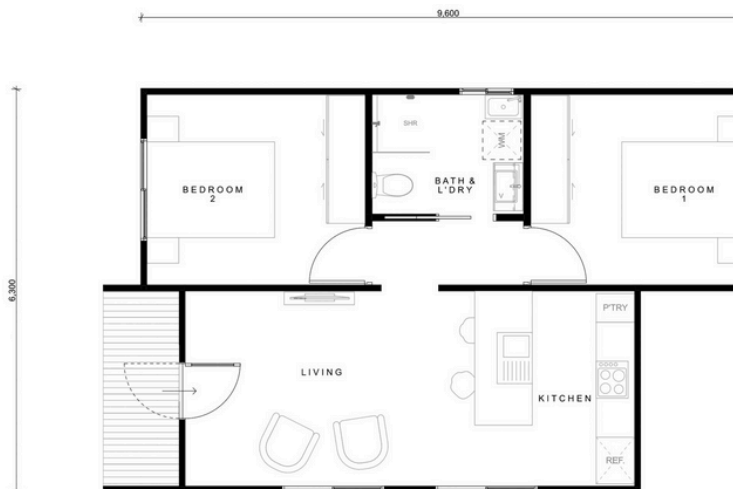
## Optional Extras

- Steps
- Deck/m2
- Pergola/m2
- Window awnings - POA
- Downlight
- Double powerpoint
- Data point
- Ceiling fan
- Ceiling fan with light
- External light



**The Raven** | \$195,000\*

56.7m<sup>2</sup> • 2 • 1 • 1





# The Living Range



**The Eagle** | \$190,900\*



## Standard Inclusions

- Bedroom
- Robe
- Bathroom with laundry
- Kitchen with appliances
- SPC flooring
- Painting external and internal
- Foundations
- Installation and delivery

## Optional Extras

- Steps
- Deck/m<sup>2</sup>
- Pergola/m<sup>2</sup>
- Window awnings - POA
- Downlight
- Double powerpoint
- Data point
- Ceiling fan
- Ceiling fan with light
- External light





**Ready to design and build  
your space? Get in touch —  
we're here to guide you every  
step of the way.**



**QUEENSLAND / NORTHERN NSW**

**0439 983 505 | [dualiving.com.au](https://dualiving.com.au)**

**[sales@dualiving.com.au](mailto:sales@dualiving.com.au)**

**DISPLAY SUITE** 1/22 Junction Rd, Burleigh Heads QLD 4220

**TERMS AND CONDITIONS**

- Pricing is based on DuaLiving's standard range designs and inclusions.
- Delivery and installation are included for locations within a 1-hour radius of Burleigh Heads, QLD.
- Council and Building Approvals, along with any required external consultant fees, are not included in the advertised price.
- Any modifications to standard in-house designs will incur additional fees.