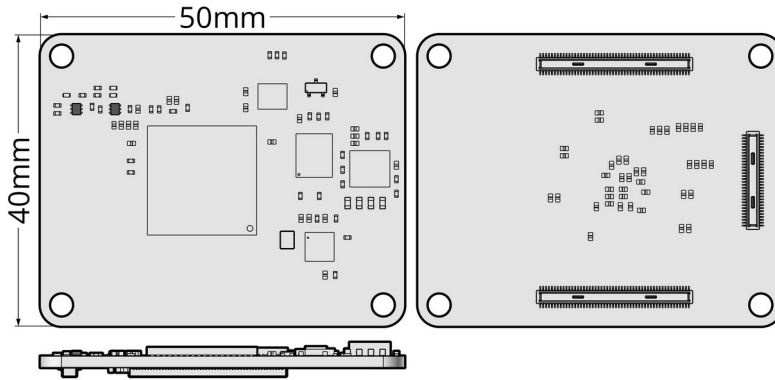




XLM21 FPGA Module Overview



The XLM21 module series features Cologne Chip® GateMate® FPGAs packaged in a 4cm x 5cm module. Additionally, the modules contain on-board:

- regulators
- clock synthesizers
- PSRAM memory
- configuration memory
- USB 2.0
- Ethernet 10/100

Signals are broken out to Hirose DF40C mezzanine connectors allowing maximum design flexibility.

Carriers are available for development purposes.

Series	Part Number	FPGA	Pkg	Grade	Memory	USB	Ethernet	Connector	Carrier
XLM21 Series									
	XLM2101	M1A1	324	NA				DF40C-100DP x 2 DF40C-60DP x 1	XLC2201-01 XLC2201-02
	XLM2102	M1A1	324	NA	8MB (PSRAM)	2.0	10/100	DF40C-100DP x 2 DF40C-60DP x 1	XLC2201-01 XLC2201-02