

Family Owned, Operated, and Oriented!

From the humble beginnings of 1973, Westbury has grown into the enchanting, village-like community we see today. Our atmosphere is serene, our community is diverse and our location is superb.

Here at Westbury, we care for each one of our residents with the utmost of pride and respect. We have community events, monthly newsletters, and to make things even better, we have multiple apartment sizes to fit almost any family. That said, you are going to love it here.

Your journey to find a home stops at Westbury Square Apartments.

Welcome to the family!

Featuring:

- Community Events
- Monthly Newsletters
- On-Call Maintenance
- Answering Service
- Monthly Pest Control
- Fast Work Order Response Time
- Hands-On Management (we're here for you!)
- Laundromat
- Courtyard
- BBQ Pits
- Swimming Pool
- Picnic Areas

What you need to get started:

- \$40.00 application fee per person over 18. Lease holder applicants must be over 21 years of age
- Security deposit starts off at \$375.00, but could change depending on what is found in the background check or rental history
- Pet fee is \$350.00. We only allow one animal and there are breed restrictions on dogs

Hours of Operation

Monday – Friday

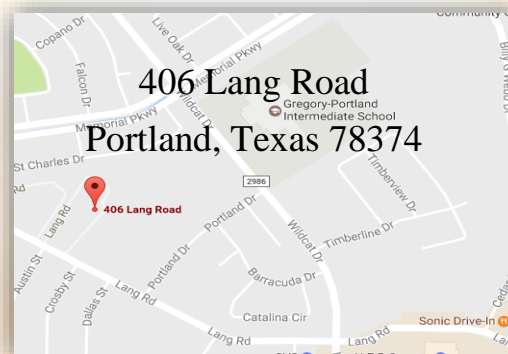
8:30 am – 5:30 pm

Saturday

By appointment only

Sunday

Closed



Phone: (361) 643-3712

Fax: (361) 643-7100

westburyportland@gmail.com

www.westburyportlandtx.com

WESTBURY SQUARE

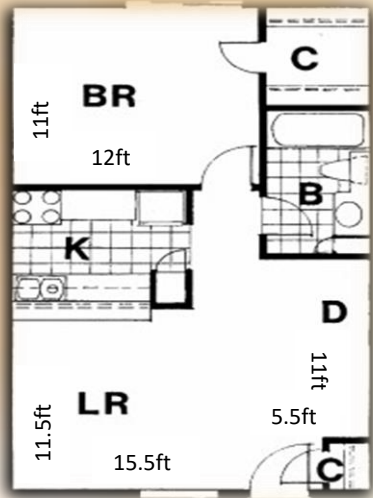


“Where everyone’s family!”

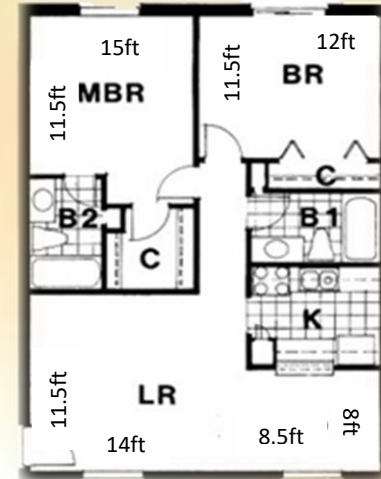


Proudly Established 1978

Floor Plans:

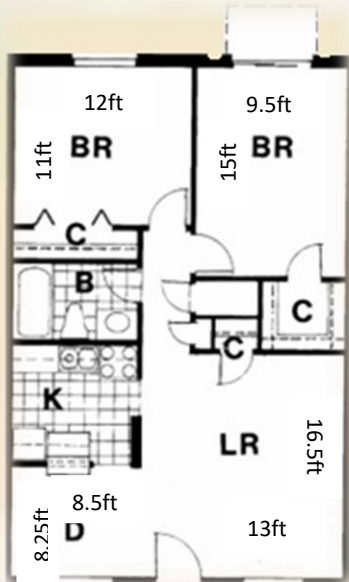
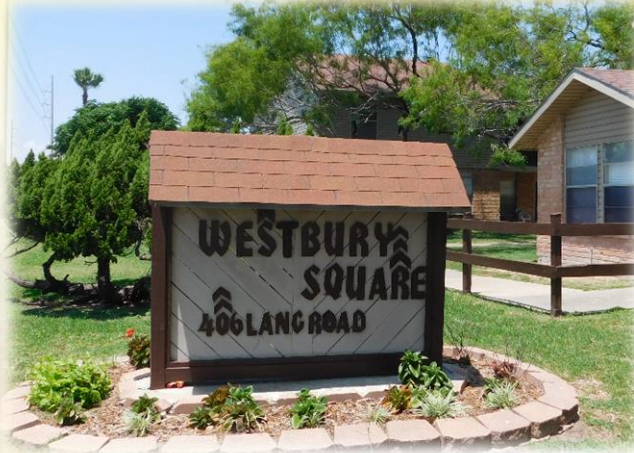


1X1
608 sq. ft.
\$725.00

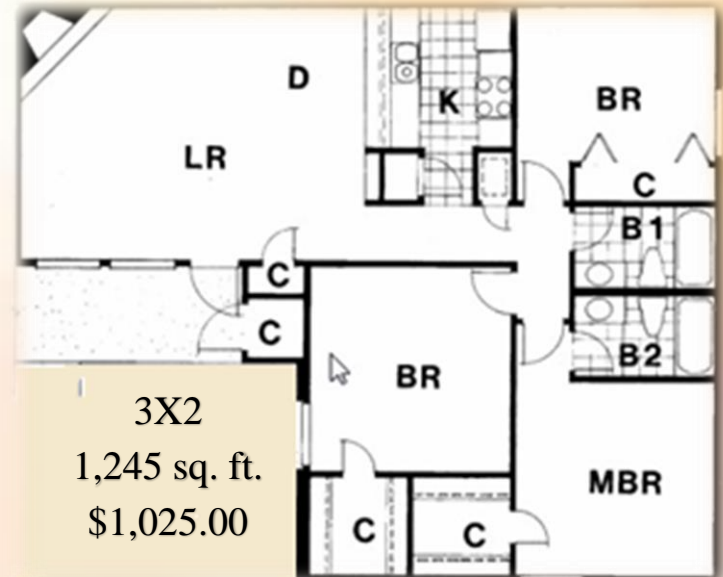


2X2
882 sq. ft.
\$905.00

Apartment interiors, property exteriors, event pictures, and virtual tours are all on our website at westburyportlandtx.com !



2X1
810 sq. ft.
\$815.00



3X2
1,245 sq. ft.
\$1,025.00

