

Preparing the Building Columns

The posts forming each door column should run vertically all the way to the top of the truss, if it does not, it must be extended.

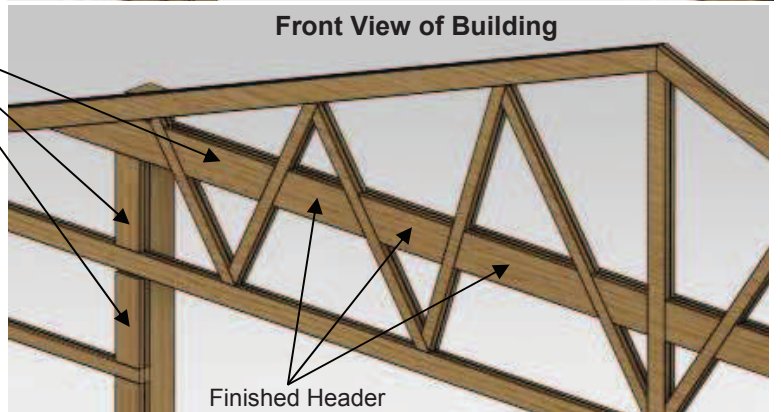
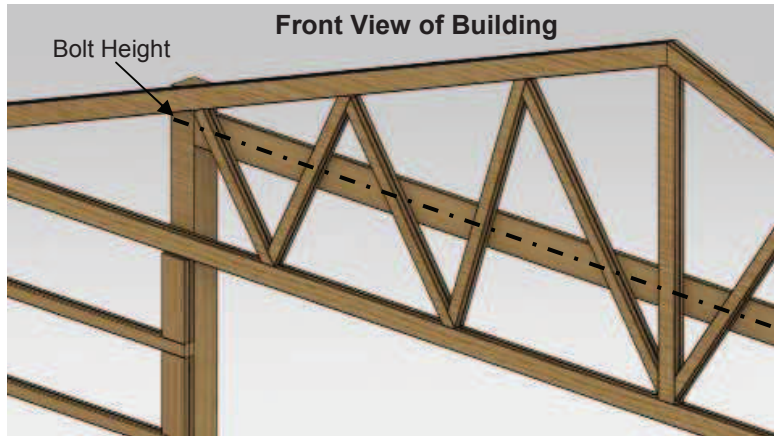
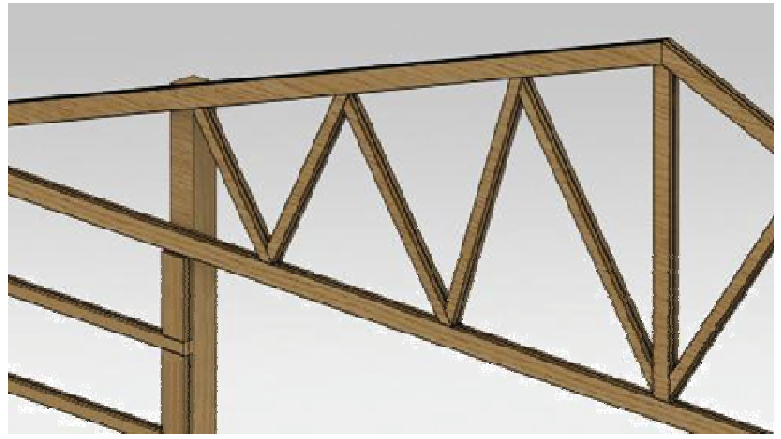
Preparing the Building Header

The Header is the part of the end-wall truss from which the door will hang.

For most wood buildings, the Header will need to be built by reinforcing the end-wall truss as follows;

1. Horizontally attach a 2x10 (or similar) to the inside (back) of the end-wall truss.
It should span the entire clear opening, attaching to the building column on either side.
Make sure it is vertically centered at the height where the hinges of the door will be attached.

2. Fill the angles between the webbing with blocking .
It is very important that the building face is flat and true.



Optional: Column Support Angles

Upon request, optional column support angles can be included to strengthen the vertical column on wood buildings.

Mount support angles so that the top edge is as high or higher then the hinge bolts.

If possible, the top corner hinge bolts for the door should be extended through the support angle.

Use supplied 5/16 x 4" Lag Bolts for mounting.

