

The Food Bank Community is Invaluable

If it were not for the community spirit of this region, the LDFB would not exist. We wish we could zero in on every function, organization, service club, school, church and the many personal and business supporters that provide us with goods and the funding to meet our goal of helping others. You are the backbone of the LDFB. *Our apologies if we have missed thanking anyone*

SPECIAL RECOGNITION

Special recognition and thanks is given to those who donated \$1000 or more to the LDFB in 2025

CORPORATE

ABCU Credit Union Ltd
Adventure Foundation
Fraserway RV Leduc
Al-Terra Group Ltd.
Alta-Fab Enterprises LTD
Altex Industries Ltd.
Aman Builders
Amazon Logistics – DYB3
Aspen Custom Trailer
ATB Financial
Atco Electric & Atco Gas
Blackjacks Roadhouse
Brett Young Seeds
Briggs Trucking & Equipment
Burnco Rock Products
Capital Power
Cargill Limited
Century Mile Race Truck & Casino
Chego Franchising Corp
City of Beaumont
City of Leduc
Copper Top Energy Services Ltd.
Costco Wholesale Canada – Nisku
CVS Controls Ltd.
Degner Construction Inc.
Domino's Pizza #10147 Leduc
Edmonton AOC
EDO Japan
Enterprise Holdings Group
Farm Credit Canada
Federated Co-operatives Ltd.
Gaetz Agency
Garlough Development Ltd.
Habaneros Mexican Grill
Hobby Spot
Horizon Machine & Design
Kelson Group
Komplete Modular
Kosmos Restaurant & Lounge
Leducor Industries & Employees
Leduc Chrysler
Leduc Co-op
Leduc County

Maude Financial Inc
Maxwell Heritage Realty
Mayco Electric
Medicine Shoppe-Leduc
Michels Canada Co
MNP - Leduc
NAV Canada
Nisku Ford
Oil Country Towing
Olio Technology Solutions
OTH Industrial Supply
PCL Fab Shop - Golf Tournament
Precision Drilling
Quarantined Case Breaks
Rad Torque Raceway
Ritchie Brothers Auction
Safe & Lock Solutions Ltd.
Safeway Leduc Liquor Store
Schwab's RV World
Sellers Oilfield service
Serenity Funeral Services
Staples - Leduc
Starbucks Vancouver Foundation
The Hobby Spot
Tim Hortons – Donna Chenn
TKO Electrical Contracting
Town of Calmar
Town of Devon
Twisted Sisters Mills
UFA Leduc
Vahagn's YIG #7230 Leduc
Valard Construction
Village of Thorsby
Village of Warburg
Vivid Signs & Designs
Walmart
World Financial Group
COMMUNITY
Beaumont Chamber Gala
Black Gold Quilt Guild
Blackjacks Christmas Dinner
Boston Pizza Foundation - Leduc

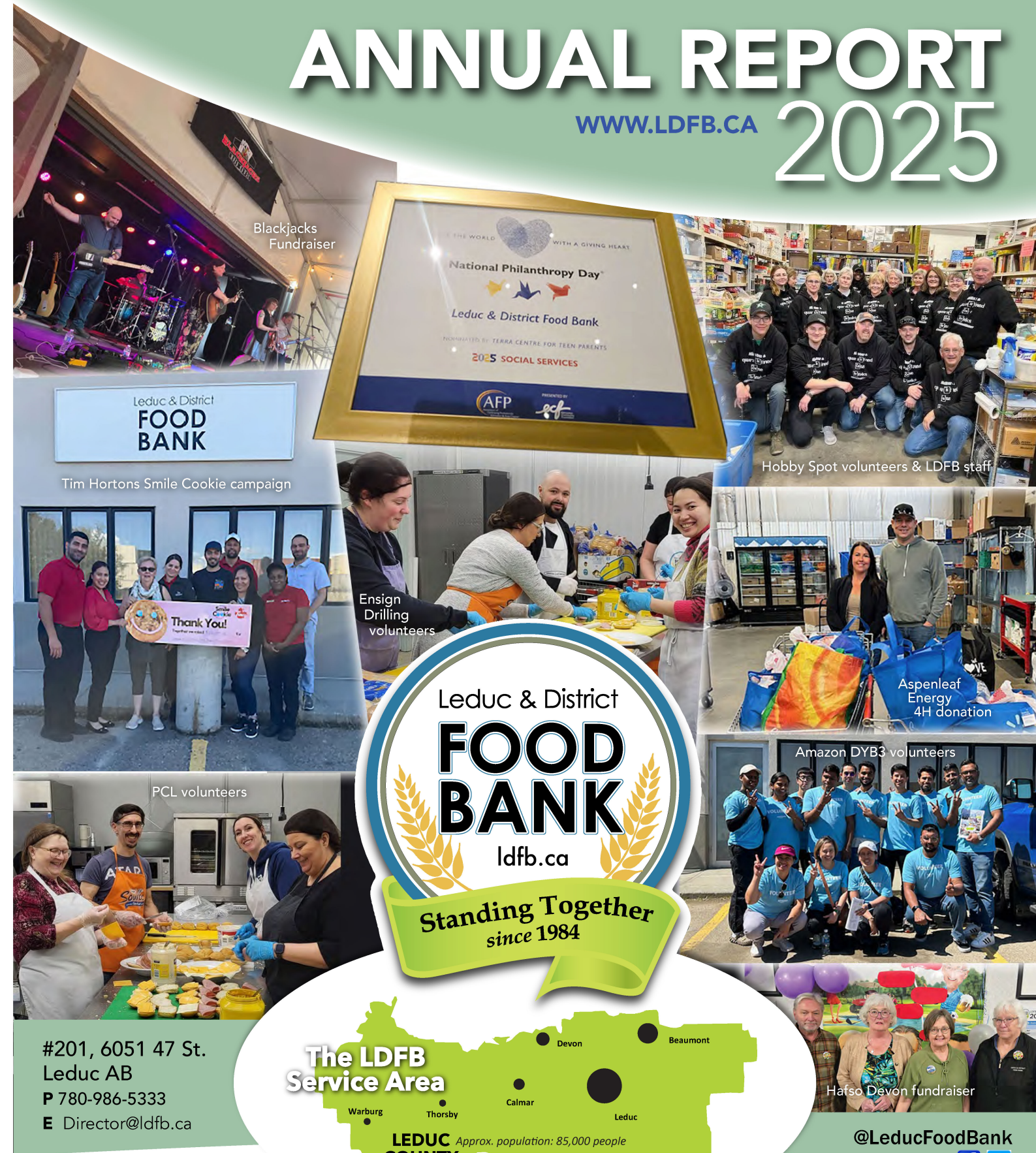
Canadian Online Giving Foundation
Chimp/Benevity Charitable Impact
Charities Aid Foundation
City Life Christian Center
Devon Christian & Missionary Church
Devon Christian Reform Church
Devon Christmas Elves
Devon Lions Club
Devon United Church
Devon United Church UCW
Eaglemont Christian Church
Ebenezer Christian Reform Church
Edmonton Community Foundation
Edmonton International Airport
EIA Charity Golf Tournament
Financial Services Group Community Trust
Food Banks Alberta
Kevin Gaetz Charity Fund at Edmonton Community Foundation
Leducor Charitable Foundation
Leduc County Christmas Truck Convoy
Leduc Fish & Game Association
Leduc Lions Club
Leduc/Nisku Rotary Club
Loblaws Spring & Fall Campaign
Mayor Bill Beaumont - Golf Charity Tournament
Mazon Canada Foundation
Mosberry Private Foundation
New Humble Community School
Rabbit Hill Baptist Church
RBC - Leduc
Safeway Leduc
Safeway Leduc Liquor Store
SEARIC
Second Glance Clothing
Seventh Day Church Conference
Sobeys Beaumont
Sobeys Beaumont Liquor Store
Sobeys Devon Liquor Store
Sobeys Southfork Liquor Store
Society of Friends of Nepal
Stimulation Resident Council

Telus Community Foundation
Unifor Local 1087
United Nurses of Alberta
– Locals 62
UW of the AB Capital Region
William and Florence Lede Family Foundation
INDIVIDUALS
Abbott, Patricia & Patrick
Andermatt, David
Angel, Steve
Badiou, Roger
Becker, Cheryl
Berg, Adam & Bridget Maude
Bevan, Mike
Blake-Leavitt, Daphne
Brauer, Peter & Robin Grigat
Briz, Alan & Siobham
Burtoshyk, Ryan
Buss, Wayne
Carole, Darcy
Caron, Eric
Christenson, Shane
Clark, Keith
Cole, Karen
Crisby, Luke
Criss, Darcy
Dabbagh, Jason
Dargatz, Keith
Debbink, Joyce
Dentman, Wesley & Ann
Dykstra, Joshua
Eshak, Rania
Fabijan, Dorothy
Farrell, Patrick
Fishbuch, Leanne
Ford, Carey
Gerber, Stanley
Gillis, Fred
Glorieux, Glenda
Hekink, Christopher
Hilborn, J & M
Hiscock, Gordon
Huillery, Melissa & Quentin
Jackson, Kathleen
Jacobson, Judy
Kards, Markos
Kegler, Brandon
Klapstein, Patricia



ANNUAL REPORT 2025

WWW.LDFB.CA



OUTSTANDING IN-KIND DONATIONS

We would like to recognize the following for their in-kind donations in 2025

CORPORATE

AltaFab Enterprises
AltaTec Auto Glass & Windows
Amazon Distribution Center - Nisku
Amazon Fulfilment Center -Nisku
Analida -Organics
Blackwolf Run Holdings
Bloom'N Buckets Country Greenhouse
Boston Pizza – Leduc
Canadian Tire Leduc
City of Beaumont
City of Leduc & Staff
Cobs - Leduc
Costco - Nisku
Craig's No Fills - Leduc
Daniels Heating & Refrigeration
Deer Valley Co-op Gas Station
Deer Valley Co-op Liquor Store
EIA (Airport Security Program)
EIA premium Outlet Mall
Global Medics
Global Pet Foods – Leduc
Goodmorning.com Charity
Ground Steam – Organics
Hardy's Independent - Devon
IGA Garden Market - Devon
Jeb's No Frills -Beaumont
Kal-Tire

Ken's Furniture
Leducor Nisku Shop
Leduc Car & Truck Wash
Leduc Co-op Food Store
Leduc Co-op Gas Store
Leduc Produce Market
LINK
Little Potato Company
Local Meats
Maple Tech Consulting
Marriott Hotels - EIA
Maxwell Heritage Realty
Medicine Shoppe -Leduc
Myarc Electric
Nisku Digital Signs
Northern A Shelving - Nisku
Oil Country Towing
Old Navy – Premium Outlet Mall
Pearson's Berry Farm EIA
Perrier Langier - EIA
Phat Tony's Bistro & Cafe
Prestigio Bakery
Renaissance Hotel - EIA
Safeway - Leduc
Shoppers Drug Mart - Beaumont
Shoppers Drug Mart Leduc - Downtown
Shoppers Drug Mart Leduc - West End
Sobeys Beaumont

Spencer Stores
Staples - Leduc
The Rep & Staff
Tier-3 I.T.Solutions
Vivid Signs & Designs
Walmart – Leduc
Westjet
Work Wearhouse Leduc
Local Meats
COMMUNITY
Beaumont Chamber of Commerce
Black Gold Quilters
Devon Quilters Club
Leduc Chamber of Commerce
Leduc Communities in Bloom
Norma Dee's Kitchen - Devon
Paradies Lagardere - EIA Stores
Willow Park School
INDIVIDUALS
Carlton, Steve & Penny
Gabielyan, Vahagn & Goharik
Moussa, Ed & Faiza
Reynar, Syd
Schuring, Lori Anne
Shields, Clarence & family
Stasiewicz, Megan
Symes, Brad
Thompson, Cecile & Perry

KITCHEN SPONSORS

We would like to recognize the following for their support and sponsorship of the Shields Community Kitchen and The Kitchen Learning Centre

Apex Utilities
Aspen Leaf Energy Ltd.
Banister Pipeline
Burnco Rock Products Ltd.
David Marriott
DK Ford
Edmonton International Airport
Faiza Moussa
Farm Credit Canada FCC
Frank Flaman Foundation
Fraserway RV
Gaetz, Warren, Barbara & family
Government of Alberta
– CFIP Grant
Huillery, Melissa, Quentin & family
Intrepid Surveys LTD

Janice Storeshaw
Leduc Co-op
Leduc Hyundai
Leduc Lions Club
Leduc Wall Fashions
OJ Pipeline
Precision Drilling
Quara 'N Fined Case Breaks
Shields, Clarence & family
Sid & Joan Fergusson
The Hobby Spot
Thermal Design Insulation
Tim Horton's (Donna Chenn)
Valard Construction
Vivid Signs & Designs
Wilhawk Beef Jerky

#201, 6051 47 St.
Leduc AB
P 780-986-5333
E Director@ldfb.ca

The LDFB Service Area

LEDCO COUNTY
Approx. population: 85,000 people
7 municipalities

MISSION STATEMENT

To empower our community to aid those in need of food support through strategic: ● Collaborations ● Educational programs, and ● Re-distribution of food and goods

VALUES

- Helping - Taking care of others to meet their needs
- Client Empowerment - Enabling our clients to move things forward
- Fulfillment - Personal, organizational and/or community accomplishment
- Teamwork - Effective collaboration, as part of the community, towards a common goal
- Organizational Growth - Being effective and relevant at what we do

VISION STATEMENT

Where all individuals are empowered to achieve their full potential, by having the opportunity to access basic social needs.

@LeducFoodBank



DIRECTOR'S MESSAGE

#201, 6051 47 St., Leduc AB | Ph 780-986-5333

@LeducFoodBank   www.ldfb.ca



Key Drivers of Food Bank Need in 2025

In 2025, Alberta recorded the fastest-surging food bank demand, with visits increasing by 21.8% over 2024, the highest in the country. Total visits hit roughly 210,000 per month, with over 75,000 for children. Since 2019, demand in Alberta has increased by over 134%.

NATIONAL SNAPSHOT (2025): Nationwide, food bank visits doubled since 2019, with a 5.2% increase over 2024, reaching nearly 2.2 million visits in March 2025. Ontario reported a record-high, with over one million people using food banks, while Atlantic provinces like Nova Scotia and P.E.I. continued to face the highest overall rates of food insecurity.

HOUSING COSTS: 70% of food bank clients nationally live-in market rent housing, with soaring rents leaving little for food. LDFB stats show 72%

THE "WORKING POOR": In Alberta, 30% of food bank users are employed - significantly higher than the national average of 19.4%. LDFB stats show 38%.

CHILD HUNGER: Children accounted for 33% of all food bank visits across Canada. In Alberta, more than one-third of visits (over 75,000) were for children under 18.

The reality of 2025 is that while the need for our services has never been higher, the cost of keeping our doors open has also risen. Like the families we serve, the food bank is feeling the squeeze of inflation with food, fuel, and utilities. We are working harder and leaner to ensure every dollar goes further.

You have been there to help support whichever way you can. Your support comes in many forms: volunteering, hosting food drives, and championing our cause through local events. We are constantly moved by your willingness to show up for your neighbors. This community's spirit of giving is what makes our work possible and it is very humbling to see so many caring individuals come forward to give what and when they can.

A huge thank you to our group of approximately 70 volunteers who selflessly continue to give their precious time. You are the hands and heart of this operation. There is no doubt the food bank would not be able to maintain operations without you!

A special thank you to our staff, whose operational skills and hard work alongside our volunteers keep our doors open and our programs running smoothly. We simply could not meet the continued demand without their dedication.



Thank you to the donors, sponsors, and overall community for their unwavering support. You are "The Community Behind the Food!" You are more like partners in our mission, and the organization just could not exist without your support. "Your financial leadership provides the stability needed to keep our doors open. You didn't just give a donation; you provided a safety net for our region."

We are also deeply grateful to our Board of Directors who serve as the stewards of your generosity. Their commitment to rigorous governance and fiduciary oversight ensures that, even in this climate of record demand, our organization remains stable, transparent, and fully equipped to deliver on our mandate within the Region.

To every one of you, "YOU TRULY DO MAKE A DIFFERENCE!"

Gert Reynar

DIRECTOR, Leduc & District Food Bank

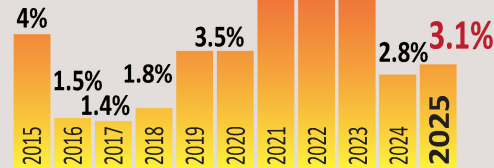
FOOD PRICE INCREASES

"The year 2025 showed a 3.1% food cost increase." Dr. Sylvain Charlebois, Project Lead, Professor, and Senior Director of the Agri-Food Analytics Lab at Dalhousie University. CANADA'S FOOD PRICE REPORT 2026

Key 2026 Food Price Report 2026

- Cost Impact:** The average family will spend \$994 more, with higher-than-average increases expected in Alberta, New Brunswick, Nova Scotia, Ontario, and Quebec.
- Key Drivers:** High inflation is driven by supply chain disruptions, severe weather affecting crops, and high input costs for farmers.
- Highest Price Hikes:** Meat (up 5% to 7%), dairy, and bakery items are seeing the most significant increases.
- Food Insecurity:** About one-quarter of Canadian households are now considered food insecure.
- Government Support:** The federal government is increasing the "Canada Groceries and Essentials Benefit" by 25% starting in July 2026, which is expected to provide \$8.6 billion in additional support over five years.
- Household Relief:** The new benefit aims to offset rising costs by offering up to \$1,890 for a family of four and \$950 for a single person in 2026.

"Our relationship with food is changing as we pay more attention to food prices than ever before, shifting our behaviors around purchasing and consumption."



FOOD PRICE INCREASES

LDFB

Affiliated Programs

We want to thank everyone for their kind support

Food Donation Connection



Food Donation Connection manages food donation programs for food service companies interested in donating food to non-profits. They coordinate all aspects of their donor partner's food donation programs. **In 2025, LDFB received 1983 lbs of food (\$7,099.14) from KFC.**

WECAN Food Basket Society

Anyone can access and use this food co-op. Operated by the St. David's United Church, the food bank is a drop-off and pick-up point for monthly orders.

We encourage client participation.



Ways to Support Us



United Way of the Alberta Capital Region

The Leduc & District Food Bank is a partner member. Designated donations through work or personal donations can be made directly through United Way to the LDFB. United Way grants go towards our Food Hamper program and the Kitchen Learning Centre..



Holiday Train

The Holiday Train Program began in 1999. Every two years, the Holiday Train visits this community with hundreds of thousands of festive lights and a live show featuring well known performers. It is the only fundraiser of its kind for food banks in Canada. Look for this event in 2026.



Fall Food Round Up & Virtual Auction - 2025 Update

Held in October, this event is organized by community members and **Latter Day Saints** who work with schools, churches, organizations and individuals within the community. A virtual silent auction campaign was also held and monetary donations were accepted.

A big thank you to the committee and community for their support of this campaign. A huge thank you to Vivid Signs & Designs, and Maxwell Heritage Realty who help sponsor this event, and all the business and individuals who donated items for the auction. We received such great support & feedback from all of you!



Country Christmas Lights Event

Look for Kinsmen Club of Leduc and Leduc Antique West Society's Christmas Lights event, held at their Antique West Society location.



RCMP First Responders Christmas 2025

A big thank you to the Leduc RCMP Detachments for taking the time to organize and host this campaign again this year.

Participants: Leduc RCMP staff, Peace Officers, Vintage Towing, Leduc Oil Country Towing staff, Leduc Fire Department.



Habaneros Mexican Grill offers a special appetizer that patrons can order. Part of the proceeds from this item goes directly to the food bank. A big thank you to staff and management!



Donating On-line

Canadahelps.org helps Canadian charities by enabling them to easily receive online donations. The LDFB is registered with this organization and donations can be made by accessing www.canadahelps.org. Type in "Leduc & District Food Bank Association" and print out your receipt on-line.



Bottle Recycling Program

Feel free to donate your empty bottles and milk cartons to the LDFB.

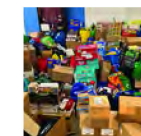


Leduc County Christmas Convoy 2025

A big thank you to the participants of the 6th annual event and collection of food for LDFB. **1688 lbs, value of \$6043.04.**

The Hobby Spot

A big thank you to Luke for his great Christmas campaign. **5941 lbs, value of \$21,268.78 and monetary donations of \$54,500.00**



ATB Cares is a way for donors to donate to the food bank.



VEHICLE SPONSORS

