

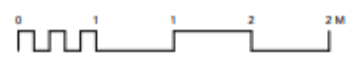
**ALLOTMENT PERGOLA**

- 1 150 x 150 x 3000mm timber post; pressure treated softwood.
- 2 200 x 50mm timber beams; bolted to uprights with 4no. stainless steel coach bolts at each intersection.
- 3 200 x 50mm timber cross-members; bolted to uprights with 4no. stainless steel coach bolts at each intersection; checked into beams and screwed with 2no. screws cross-driven at each intersection.
- 4 600 x 600 x 600mm deep C20 concrete foundation. Formed with timber shutter; top float finished; 10mm chamfer to all edges.
- 5 Bolt down post base: 133x133mm for 150x150mm post. Simpson CPT Concealed Post Base. 25mm standoff above ground level reduces the potential for decay at the post end. Fitch plate bolted to concrete foundation with 2no. M12 x 200mm mechanical anchors.
- 6 Container units.

Note:  
All timber pressure-treated TANALITH™ E or equivalent; painted with 2no. coats water-based timber paint. Colour SICO Silver Grey.



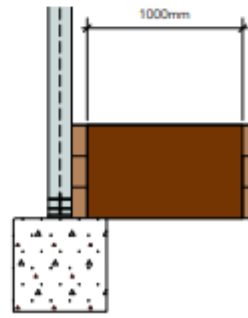
Bolt down post base



**PERGOLA PLANTER**

- 7 Timber surface planter with 500mm depth clean topsoil incorporating compost at 50 litres per m<sup>2</sup>. Cut tops de-burred and treated with brush on preservative. Non-woven geotextile separation layer between blades and soil.
- Note:  
All timber pressure-treated TANALITH™ E or equivalent; painted with 2no. coats water-based timber paint. Colour SICO Silver Grey.

**SECTION 3  
(1:20)**



**ELEVATION  
(1:20)**

