



# 2019 Tri-Service Regatta

14 SEPTEMBER 2019  
Langley Yacht Club

## SAILING INSTRUCTIONS

### 1 RULES:

The series will be governed by **The Racing Rules of Sailing (RRS) for 2017-2020** as modified by these sailing instructions.

### 2 NOTICES TO COMPETITORS:

Printed copies of the notices to competitors, Sailing Instructions and any amendments will be posted on the **Official Notice Board**, located online at <http://www.langleyyachtclub.net>.

### 3 CHANGES TO SAILING INSTRUCTIONS:

Any change to the sailing instructions will be in writing and posted to the notice board before **2330, 13 Sep 2019** and echoed online thereafter. Changes required as a result of the skipper's meeting will be included in this posting; skippers are responsible for complying with these amendments whether or not they attend the meeting.

### 4 SCHEDULE OF RACES:

**4.1** The Tri-service Regatta date is Saturday, **14 Sep, 2019**. The scheduled time of the first warning signal is **1000L**, RC ship's time.

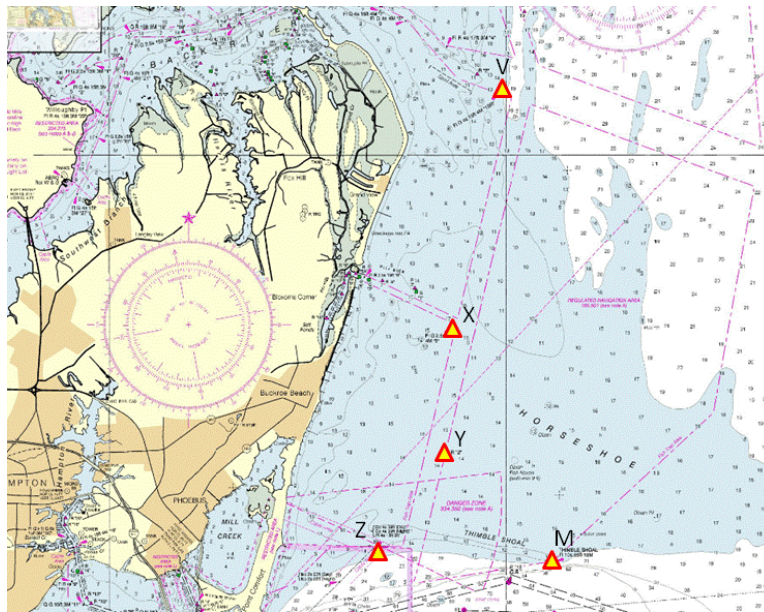
**4.2** If the RC postpones a start or abandons a race, the decision for subsequent starts will be at RC discretion.

### 5 CLASSES & CLASS FLAGS:

**5.1 CLASSES.** The RC reserves the right to split Classes based on the number of entrants.

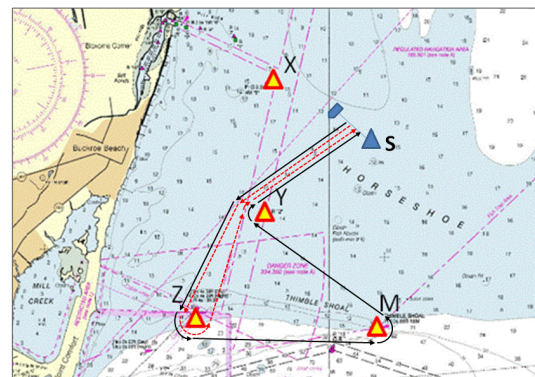
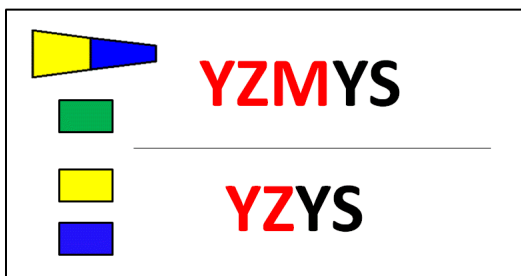
- **Racing (PHRF NS)** – Boats with 2019 PHRF of the Chesapeake Valid Ratings. 2HS allowed. Non-spinnaker, Boats in this class are subject to Nearshore Category Safety criteria. Class Flag: **5**.
- **Cruising** – Boats without Valid Ratings, single HS. Boats are allowed two headsails only when changing sails. Boats are subject to USCG requirements for Safety. Boats will be assigned a courtesy rating which may not be appealed (this amends RRS 60.1). Maximum unpenalized whisker pole length is J and maximum unpenalized %LP is 155%.

**6 RACING AREA: NOAA Chart 12222:**



**7 THE COURSES:**

- 8.1 The signal boat will use a course board amidships to designate the course to be sailed. Class flag symbols precede the course letters to indicate a Class' designated course.
- 8.2 Excepting the finish, marks displayed in **RED** are to be left to **PORT**, those displayed in **BLACK** are to be left to **STARBOARD**.
- 8.3 Boats shall pass the finish mark on the committee boat side, from the course side of the line, between the mark and the committee boat, without regard to the course board color used to denote the finish mark.
- 8.4 Boats are reminded that an exclusion zone exists 500 feet around Buckroe Beach pier.
- 8.5 The first letter on the course board will be the first rounding mark of the course. The last letter indicates the finish mark. **Example shown below:** PHRF NS and 3 Cruising divisions (Cr1, Cr2, Cr3). PHRF NS and Cr1 (Green) sail black line charted course, Cr2 and Cr3 (Yellow and Blue) sail the red dashed charted course:



## 8 MARKS:

8.1 The marks to be used are presented in the attached table:

Mark	Latitude	Longitude	Description
Y	N37°01'58.8"	W076°15'45.0"	Daymark R "2", 1nm off Buckroe Pier
X	N37°03'13.8"	W076°15'39.0"	Daymark F1 G 2.5s "3", Salt Ponds Channel
V	N37°05'37.1"	W076°15'03.9"	Daymark F1 G 4s 15ft 4M "1BR"
M	N37°00'52.2"	W076°14'24.0"	Thimble Shoals Light
Z	N37°01'01.8"	W076°16'40.0"	Range Tower Oc 4s 58ft
S	Within 1nm of Y	Within 1nm of Y	Starting/finishing Drop Mark

8.2 An orange inflatable cylinder may be used as drop mark S if required. S will not be moved after the start of a race.

8.3 Bearing/distance chart among fixed marks:

TO: FROM	M	V	X	Y	Z
M		004 4.8	347 2.6	326 1.5	284 1.8
V	184 4.8		201 2.4	199 3.7	206 4.8
X	167 2.6	021 2.4		194 1.3	210 2.4
Y	146 1.5	019 3.7	014 1.3		228 1.2
Z	104 1.8	026 4.8	030 2.4	048 1.2	

## 9 CHECK-IN:

Before the warning signal a boat shall pass by the stern of the RC Signal Boat and hail her sail number until acknowledged by the RC. A boat may not protest a breach of this rule. This changes RRS 60.1.

## 10 THE START:

**10.1** The order of starts shall be posted on the official notice board. Expect Racing NS to start first, followed by Cruising Class as divided, faster cruisers first.

**10.2** RRS 26 procedures using RC ship's time will govern starts. In addition, the RC will attempt to broadcast an "Attention" signal **approximately** 5 minutes before the first warning, consisting of several short horn blasts and a VHF 72 transmission.

**10.3** The starting line will be between the orange flag on the Race Committee boat and the starting mark. If winds allow, this starting mark will be Mark Y. However, the RC may reposition the start up to one mile from Y using mark "S."

**10.4 Come Within Hail.** The RC will fly Code Flag L if it changes the course before the start. If the sequence has already begun and a course change is warranted, the RC will postpone the race (Answering Pennant) to allow all boats to receive the new course.

**10.5** Boats failing to start within 15 minutes of their class signal will be scored DNS.

**10.6** All boats are required to fly their class flag or ribbon from their backstay. Boats without backstays shall fly their class flag from the starboard shroud. Only the Race Committee may protest a breach of this rule. This changes RRS 60.1.

**10.7 INDIVIDUAL RECALLS.** The RC will attempt a hail to OCS boats on VHF 72. The hail is a courtesy: its timing, the sequence of boats recalled, or perceived lack of courtesy hail does not absolve a boat from the responsibility to correct a starting error and shall not be considered grounds for granting redress. This changes 29.1 and 62.1(a).

**10.8 GENERAL RECALLS.** Per RRS 29.2. The sequence will resume with the recalled Class.

## 11 THE FINISH:

**11.1** The finishing line will be the line between the finishing mark and the orange flag on the RC boat.

**11.2** In the event of a shortened race, the finish line will be between a course mark and the "S" flag displayed with Class Flag(s) of the affected Class(es) on the RC boat finishing those classes. If no class flags are displayed, the course is shortened for all classes.

## 12 PENALTY SYSTEM:

**12.1** A retiring boat shall advise the RC as soon as possible by VHF radio (72) or by cell phone (757-329-6992). Please continue calling until your call is received and acknowledged by the Race Committee.

**12.2** RRS 44.3 (alternative scoring penalty) is not applicable.

## 13 TIME LIMIT:

**13.1** The time limit for all races is 1500h/3PM. Boats *\*still racing\** but not finished within the time limit will be scored TLE and awarded finishing credit (participation points only). If no boat of a given Class has finished in the time limit, that Class' race will be abandoned. This paragraph changes RRS 35.

**13.2** When a boat's finish position in her Class may be easily determined, the RC may finish her in place prior to the expiration of the time limit by advising her over VHF 72. This modifies RRS 35.

## 14 PROTESTS AND REQUESTS FOR REDRESS:

**14.1** By registering and racing the TSR, participants agree to comply with established US SAILING procedures for dispute resolution. See US SAILING Prescriptions to Rule 67 for reference.

**14.2** A boat intending to protest shall inform the RC upon finishing or retiring, and identify the boat(s) being protested. This notification must be acknowledged by the Race Committee.

**14.3** The protest time limit to file a written protest or request for redress expires at 5:00PM/1700. Once the RC docks, a representative will proceed directly to the Salt Ponds Marina office. Documents may be filed with the RC's representative until the expiration of the time limit.

**14.4** Protests and requests for redress will be heard by a Protest Committee appointed by the RC. Upon the filing of a protest or request for redress, the RC will coordinate with the parties and PC. Hearings will be conducted at Salt Ponds prior to the Awards Party.

**14.5** Arbitration will not be offered

## 15 SCORING:

**15.1** The Tri-service regatta will use a high points system of scoring. Scores will be determined for individual boats representing each of the three host clubs; those scores will be summed to calculate a total for each yacht club.

**15.1.1 Individual boat points.** Boats earn one point for every in-class boat they beat (Racing-NS: all boats scored in aggregate; Cruising: boats scored separately "as split" – C1, C2...). Additionally, boats earn "participation points" at the rate of ½ point for starting the race and ½ point for finishing the race (includes ZFP). Boats scored DNF retain participation points for starting only; disqualified boats (DSQ, OCS, BFD), boats retiring under RRS 44.1b, and boats scored DNS lose participation points.

**15.1.2 Club points.** Total of the club's individual boat scores. In the event of a tie between clubs, the Racing-NS top finishing boat will be awarded an additional 0.25 point to break the tie.

**15.2** PHRF NS: 1<sup>st</sup>-4<sup>th</sup>. Cruising Awards: 1<sup>st</sup>, 2<sup>nd</sup>, 3<sup>rd</sup> per Class as split. Overall: Tri-service trophy awarded to the winning club.

**16 SAFETY:** The decision to race or continue racing or retire rests with an individual skipper.

## 17 COMMERCIAL TRAFFIC:

**17.1** Any attempt by a contestant to exercise right of way, to cross in close proximity to or to interfere with the reasonable transit of the race area by commercial freighters, tugs, or tows, and other vessels which are unable to respond readily will be grounds for a protest. Should such a protest occur, the burden of proof is on the boat allegedly interfering. Contestants must take evasive action well in advance of any potentially dangerous situation.

**17.2** Under RRS 42.3(i), a boat may use any means necessary, including an engine, to clear right of way traffic in established shipping channels, provided she does not gain significant advantage through her actions. While she is subject to protest, Rule 62.1 is modified to consider her request for redress under these circumstances.

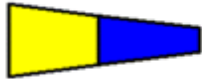
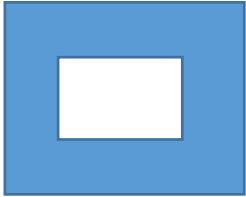
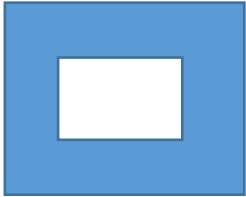
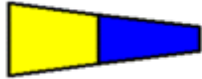
**18 RADIO COMMUNICATION:** Racers will monitor **VHF 72**. Radios shall not be used to obtain navigational or weather information that is not available to the general public. Boats should monitor VHF Channel 72 during the start for recalls and any other information the Race Committee may issue. It is suggested that boats racing monitor VHF Channel 16 and the NOAA Weather Broadcasts and make contact with commercial traffic on VHF Channel 13 as appropriate to maintain safety.

**19 US SAILING Prescription 56, Flags,** is modified to allow display of LYC-NNSA-OPCYC club burgees and club officer flags during the race provided they do not interfere with the visibility of a boat's race

signals (class flag, protest flag, sail number, etc). The RC will issue a warning before protest to allow for correction. In addition, respectful use of the Colors/National Ensign is allowed under the same caveats.

**20 DISCLAIMER OF LIABILITY:** Competitors participate in the regatta entirely at their own risk. See rule 4, Decision to Race. LYC, NNSA, and OPCYC will not accept any liability for material damage or personal injury or death sustained in conjunction with or prior to, during, or after the regatta.

APPENDIX A – RRS 26 STARTING PROCEDURES

<b>Warning</b>	5-minutes to Start	Class Flag Up (NS Fleet Shown) 	Cannon	
	4-minutes to Start	 Prep Flag Up	Short Horn	<ul style="list-style-type: none"> <li>• Racing Rules in effect;</li> <li>• Motor out of gear or off;</li> <li>• Boats may protest rules infractions</li> </ul>
	1-minute to Start	 Prep Flag Down	Long Horn	One Minute
<b>Start</b>	Start	 Class Flag Down	Cannon	Start