

Nuggets of Fun and Nostalgia for Treasure Valley Golden-Agers

The Wandering Christmas Camel

by Janet Eyestone Buck

Our family has always enjoyed a Christmas tradition of setting out a ceramic nativity scene--complete with wise men, camels, shepherds, sheep, and of course, Mary, Joseph, and Baby Jesus. Each season the nativity scene was the same.

One year when my children were young, I carefully unwrapped each piece and set up an artistic display representing the first Christmas.

The children gathered around to watch. We talked about the birth of Jesus and the visit of the shepherds and Magi. I then cautioned the children, as always, not to touch the pieces, explaining that they were fragile and easily broken.

This year, however, the temptation was too great for my two-year old daughter, Elizabeth. The day we set up the nativity scene, I noticed several times, with some irritation, that a camel had wandered from its appointed place or sometimes a sheep had strayed from the watchful care of the shepherd.

Each time, I returned the piece to its rightful place, and then tracked down the culprit and admonished her to leave things alone.

The next morning, Elizabeth awoke and went downstairs



(Continued on page 2)

Christmas

*Every time a hand reaches out
To help another....that is Christmas
Every time someone puts anger aside
And strives for understanding
That is Christmas*

*Every time people forget their
differences
And realize their love for each other
That is Christmas*

*May this Christmas bring us
Closer to the spirit of human
understanding*

Closer to the blessing of peace!



There's More to Christmas

*There's More to Christmas...
There's more, much more to Christmas
Than candle-light and cheer;
It's the spirit of sweet friendship
That brightens all the year;
It's thoughtfulness and kindness,
It's hope reborn again,
For peace, for understanding
And for goodwill to men!*



Live a Life Worth Celebrating
AT HARMONY HILLS ASSISTED LIVING

Call (208) 283-3042

for a tour of our beautiful new community

1180 W. Overland Rd. ♦ Meridian, ID 83642 ♦ www.harmonyhillsassistedliving.com

America's Choice in Homecare



LIVING ASSISTANCE SERVICES

Serving the Treasure Valley

208.888.3611

www.visitingangels.com/boise/home



An "At Your Service" Home Health Agency

Now Hiring Clinical Staff: RN, LPN, CNA

2950 E. Magic View Dr., Meridian, ID 83642 #150

www.healthylivingnet.com ♦ P (208) 999-4110 ♦ F (208) 493-3019

Facebook Friends

I am trying to make friend outside of Facebook while applying the same techniques.

Every day I walk down the street and tell passersby what I ate for lunch, how I feel at the moment, what I did yesterday, and what I will do later and with whom.

I show them pictures of my family, my dog, and of me gardening, working on my car, watering the lawn, standing in front of landmarks, driving around town, having lunch and doing what everyone else does every day.



I also listen in on their conversations with others and give them a "thumbs up" and tell them I like what they said.

And it works just like Facebook! I already have four people following me: two police officers, a private investigator and a psychiatrist.

The Wandering Christmas Camel (Continued from page 1)

before I did. When I walked into the living room I noticed right away that the manger scene had been disturbed again. All the pieces were clumped together in a mass, as tightly as they could be fitted together.

Impatiently, I stepped forward to put things right; but I stopped short as I realized that some thought had gone into this new arrangement. All twenty-three figures were grouped in a circle, facing inward, pushed together as if to get the best view possible of the figure resting in the center of them all—the Baby Jesus.



The spirit touched my soul as I pondered the insight of a two-year old. Certainly, Christ should be the center of our holiday celebrations. If we all could draw in around our Savior—not only during the Christmas season but during each day—what a better perspective we would have. The love He offers to each of us would be easily shared with others who have not ventured so close.

I left the nativity arranged according to Elizabeth's design that year. It served as a poignant reminder during the rest of the season of what Christmas is all about.



(208) 321-1703

Providing non-emergency transportation

- Ambulatory • Wheelchair • Hospice
- Stretcher • Long-Distance



The Cottages

Assisted Living & Memory Care

Assisted Living & Memory Care at its best!

Boise 853-1255

Meridian 288-2220

Middleton 585-5959

Nampa 463-4941

www.TheCottages.biz

HOME CARE AND MEDICAL STAFFING



- Personal Care & Homemaker Services
- Private Duty Nursing
- Accept Medicaid, Veterans' Benefits and Private Pay
- Short, Long-term and Permanent Staff Placement

(208) 336-9898 ♦ Serving the Treasure Valley and Magic Valley

IN-HOME CARE & ASSISTANCE



www.havenwoodhomecare.com
(208) 327-1011

Not for the Faint of Heart

A mechanic was removing a cylinder head from the engine of a BMW when the owner walked in, a highly sought-after heart surgeon.



The mechanic stood up, turned to the surgeon, and said, "Hey, Doc, can I ask you a question?"

"Of course," responded the physician.

The mechanic wiped his hands on a rag and asked, "So, Doc, look at this engine. I open it up, take out the valves, fix 'em, put 'em back in, and when I finish, it works just like new. So how come I get such a small salary and you get the really big bucks, when you and I are doing basically the same work?"

The surgeon paused, smiled and leaned over, and whispered to the mechanic, "Have you every tried doing it with the engine running?"

BridgeTower Chiropractic



Dr. Scott H. Gibbons
3120 W. Belltower Dr.
Meridian, ID 83646

208.846.8898

No Twisting, Popping or Cracking!



An authentic 50s-style diner

Open Daily 6:00 a.m. to 2:30 p.m.

979 S. Progress Ave.
Meridian, Idaho



"We Deliver Happiness For You"

391 W State St Suite B • Eagle, ID 83616
(208) 939-4022

Work with the nation's tax leader.

Love working with people and a flexible schedule?

**H&R
BLOCK**

NOW ACCEPTING APPLICATIONS
Shifts and locations are flexible.
Military personnel, veterans and
bilingual candidates are
encouraged to apply.

CONTACT LARISSA MAGEE
larissa.magee@tax.hrblock.com
(208) 713-8031

OBTP#B13696 © HRB Tax Group,



Open Daily
6:30 am -
2:30 pm

2483 E. Fairview, Ste. 105
Meridian, ID 83642

Copper Springs Senior Living



Compassionate Care

- ♦ Assisted Living
- ♦ Memory Care

3570 E. Amity Rd., Meridian, ID 83642 ♦ (208) 888-7030

NEUROLOGICALLY-BASED CHIROPRACTIC CARE



Dr. Clay Ramos

(208) 614-2290
1767 W. FRANKLIN • MERIDIAN, ID 83642



Four FREE hours of Daycare for New Customers! CALL NOW!!



Ashley Manor

EST. 1996

- ◆ Alzheimer & Dementia Care Specialists
- ◆ Assisted Living Accommodations

(208) 376-7298

www.ashleycares.com

BOISE ◆ EAST BOISE ◆ NAMPA ◆ CALDWELL ◆ MT. HOME

Sharing Your Seed

There was a farmer who grew excellent quality corn. Every year he won the award for the best grown corn in the county.

One year a big-city newspaper reporter interviewed him. In the course of the interview he learned something very interesting about how he grew it. The reporter discovered that the farmer shared his award-winning seed corn with his neighbors.



“How can you afford to share your best seed corn with your neighbors when they are entering their corn in competition with yours each year?” the reporter asked.

“Well, young man,” said the farmer, “don’t you know? The wind picks up pollen from the ripening corn and swirls it from field to field. If my neighbors grow inferior corn, cross-pollination will steadily degrade the quality of my corn. If I am to grow good corn, I must help my neighbors grow good corn.”

So is with our lives... those who want to live meaningfully and well must help enrich the lives of others, for the value of a life is measured by the lives it touches. And those who choose to be happy must help others find happiness, for the welfare of each is bound up with the welfare of all...

- Author Unknown (Proverbs 11:24-25)

Late Christmas Gift

Fred and John were fortunate enough to have season tickets to watch the Chicago Bears.

But they could not help noticing that there was always a spare seat next to them. They had a friend who would love to buy a season ticket, especially if all three could have seats together.

One half-time Fred went to the ticket office and asked if they could buy the season ticket next to them. The official said that unfortunately the ticket had been sold. But every week the seat was still empty.

Then on the Sunday after Christmas, at the last home game of the season, much to Freddie and Eddie's amazement the seat was taken for the first time that season.

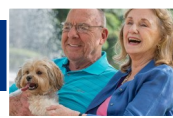
John could not resist asking the newcomer, “Where have you been all season? You missed the first seven games!”

“Don't ask,” he said. “My wife bought the season ticket back last summer, but she kept it for a surprise Christmas gift!”



BROOKDALE
SENIOR LIVING

Enriching the lives
of those we serve



BOISE PARKCENTER ASSISTED LIVING

739 E Parkcenter Blvd.
Boise, ID 83706

(208) 695-9755

BOISE PARKCENTER INDEPENDENT LIVING

767 E Parkcenter Blvd.
Boise, ID 83706

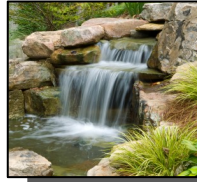
(208) 331-1166

Life-Changing Service



(208) 888-7877

www.HorizonHH.com



- ◆ Serving the Treasure Valley since 1911
- ◆ Providing funeral, cremation and pre-planning services
- ◆ A commitment to serve with understanding and compassion

Phone: (208) 343-6493 • boise@summersfuneral.com



Serving the entire Treasure Valley
(208) 887-7719

Early Christmas Shopping



It was just before Christmas and the judge was in a happy mood. He asked the prisoner before his bench, "What are you charged with?"

The prisoner replied, "Doing my Christmas shopping too early."

"That's no crime," said the judge. "Just how early were you doing this shopping?"
"Before the shop opened," answered the prisoner.



- Call now to schedule for creating Christmas gifts
- Custom base and plaque
- Gift Certificates

For appointment
Call (208) 467-9626



www.facebook.com/firstimpressionsidaho

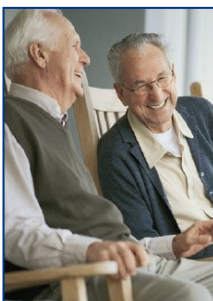


Tired of missing out on your life's most important moments even with hearing aids?

A cochlear implant may be your life-changing solution.



For an event schedule or a 1:1 consultation, Contact Ali Devey
(661) 289-4077
alison.devey@advancedbionics.com



The Comforts of Home with the Loving Care You Need.

A full range of assisted living services and advanced levels of care are available in the comfort of our warm, friendly communities. Call the community nearest you to schedule a personalized tour.



Senior Living 5815 Coffey Street
Garden City, ID 83714
208-377-9980



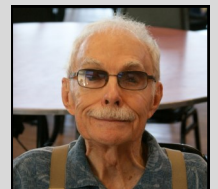
Senior Living 715 West Comstock Avenue
Nampa, ID 83651
208-463-1732

enlivant.com

October Drawing Winner

Claire Richards, Meridian

He wins a gift certificate from Terri's Cafe in Meridian





*Authentic Italian Cuisine
in the Treasure Valley since 1996*

**Exciting Weekly Dinner Specials
& Daily Lunch Specials**

HOURS Mon-Thurs: 11am-9:30pm Fri-Sat: 11am-10pm

(208) 887-7710 • 3015 W. McMillan, Meridian, ID 83646

Reverse Mortgage Specialist



FINANCE of AMERICA
- REVERSE -



Devin Fahrner

(208) 863-6610 NMLS#399405
dfahrner@financeofamerica.com

©2018 Finance of America Reverse LLC | NMLS ID #2285 (www.nmlsconsumeraccess.org)
| 8023 East 63rd Place, Suite 700 Tulsa, OK 74133 | (855) 421-4745

Her Christmas was in the mail

During December, Ned's job at the post office was to process all the mail sent to Santa. One day a letter came in addressed in shaky handwriting to Santa, with a barely legible return address. He opened the letter and read the following:

"Dear Santa,

I know I quit believing in you years ago, but you are my last hope. I am an 83 year-old widow, living on a very small pension. Yesterday someone stole my purse. It had \$100 in it, which was all the money I had until my next pension check. Next week is Christmas, and I had invited two of my widow friends over for dinner. Without that money, I have nothing to buy food with. I have no family to turn to, and I'm desperate. Can you please help me?

Sincerely, Ethel

The postal worker was touched. Ned showed the letter to all the other workers. Each one dug into his or her wallet and came up with a few dollars. By the time he made the rounds, he had collected \$96, which they put into an envelope and sent to the woman, with a note from Santa.

The rest of the day, all the workers felt a warm glow thinking of Ethel and the dinner she would be able to share with her friends.

Christmas came and went. A few days later, another letter came from the same old lady to Santa. All the workers gathered around while the letter was opened. It read ...

"Dear Santa,

How can I ever thank you enough for what you did for me? Because of your gift of love, I was able to fix a glorious dinner for my friends. We had a very nice day and I told my friends of your wonderful gift.

By the way, there was \$4 missing. I think it must have been those bums down at the Post Office."



OVERLAND COURT
SENIOR LIVING
ASSISTED LIVING & MEMORY CARE



Life lives better at Overland Court

10250 W. Smoke Ranch Drive
Boise, Idaho 83709

(208) 322-2900



- Medical appointments
- Personal errands
- Wheel-chair

(208) 573-7607

**Providing non-emergency transportation
for the elderly and disabled**



SPRING CREEK

Independent Living ♦ Assisted Living ♦ Memory Care

- ♦ Plantation Place - Boise ♦ 3921 Kessinger Lane ♦ 83703 ♦ 208.853.7300
- ♦ Spring Creek - Eagle Island ♦ 3705 W. Flint Drive ♦ 83616 ♦ 208.939-6499
- ♦ Spring Creek - Boise ♦ 10681 W. McMillan Rd ♦ 83713 ♦ 208.954.5661
- ♦ Spring Creek - Eagle ♦ 653 N Eagle Rd ♦ 83616 ♦ 208.938.5578
- ♦ Spring Creek - Meridian ♦ 175 & 253 E Calderwood Dr. ♦ 83642 ♦ 208.884.6199
- ♦ Spring Creek Overland - Boise ♦ 10139 W Overland Rd ♦ 83709 ♦ 208.639.7000
- ♦ Spring Creek Ustick - Meridian ♦ 3165 Meridian Rd ♦ 83646 ♦ 208.287.2064
- ♦ Edgewood Castle Hills ♦ 5955 Castle Drive ♦ Boise ♦ 83703 ♦ 208.331.1300

Foiled by the Word

An elderly woman had just returned home from an evening church service when she was startled by an intruder. She had caught him in the act of robbing her home and stealing her valuables.

She yelled at him, "Stop! Acts 2:38!" (Her favorite scripture, which reads "Repent and be baptized in the name of Jesus Christ so that your sins may be forgiven.")

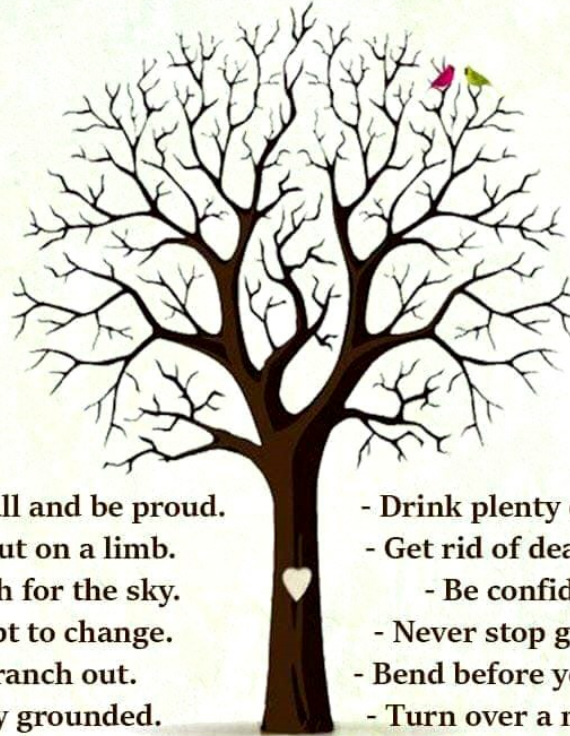
Inexplicably, the burglar stopped in his tracks.

The woman calmly called the police, who quickly came, found the man and arrested him.

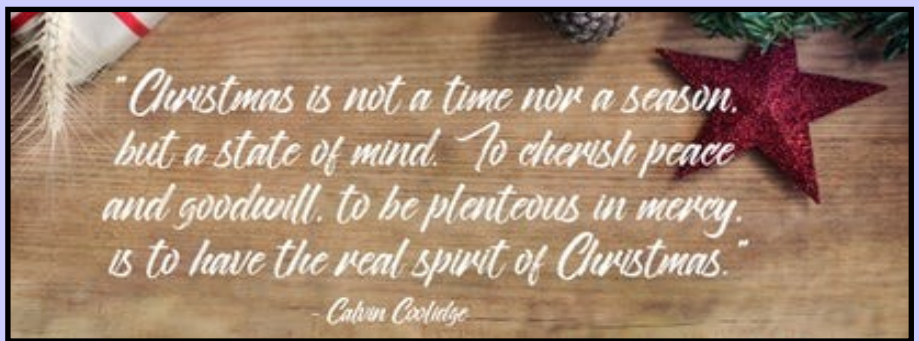
As the officer handcuffed the man, he asked the burglar, "Why did you just stand there? All the lady did was quote a scripture at you."

"Scripture?" replied the burglar. "I thought she said she had an axe and two '38s!"

Advice From A Tree



- Stand tall and be proud.
- Go out on a limb.
- Reach for the sky.
- Adapt to change.
- Branch out.
- Stay grounded.
- Remember your roots.
- Drink plenty of water.
- Get rid of dead wood.
- Be confident.
- Never stop growing.
- Bend before you break.
- Turn over a new leaf.
- Enjoy the view.



Announcing Our New Senior Goldmine Website:

www.seniorgoldmine.com

- ♦ Photos from events
 - ♦ Calendar of events
 - ♦ Links to recent issues
- ...and much more!



HEATHERWOOD
Senior Living
It's a lifestyle!

A vibrant, energetic independent living community

5277 W. Kootenai St.
Boise, ID 83705

(208) 345-2150

www.heatherwoodsensiors.com



Hospice • Home Health • House Calls



Phone (208) 465-7121

ASSISTED LIVING



Helping you live your best life!

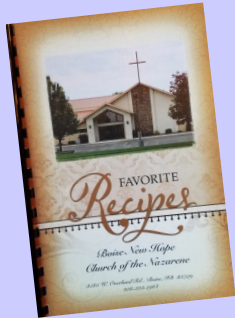
- ◆ Warm, loving atmosphere
- ◆ Home-cooked food & great service
- ◆ Highly trained, friendly staff

208.888.0090 • 1695 S. Locust Grove, Meridian, Idaho 83642

I stopped believing in Santa Claus when I was six.
 Mother took me to see him in a department store and he asked for my autograph.
 - Shirley Temple

Milestones

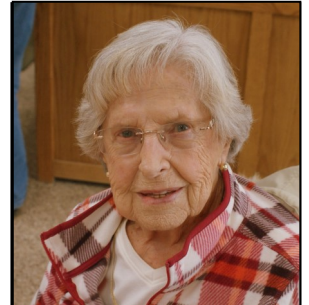
Great Christmas Gift



Favorite Recipes
 By Boise New Hope Seniors
\$10
 To order, call Gerry at
(208) 859-6368



Elizabeth Cutter
 Dec 13, 1926—93 years
 Meridian Senior Center



Geri McClellan
 Nov 1, 1928—91 years
 Kuna Senior Center



Esther McGarret
 July 11, 1929—80 years
 Eagle Senior Center

Senior Goldmine recognizes the following Milestones:
Birthdays:
 70, 75, 80, 85, 90 and up;
 and **Anniversaries:**
 50, 55, 60 and up.
 Send your information to terry@seniorgoldmine.com or call (208) 615-1948



Marilyn Steiger
 Dec 4, 1939—80 years
 Meridian Senior Center



Mountain Pine DERMATOLOGY

(208) 898-7467

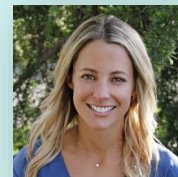
1576 W. Deer Crest St., Ste. 100 ♦ Meridian, ID 83646 ♦ www.mtnpinederm.com



R. Scott Thomas, D.O.



Benjamin Perry, D.O.



Chelsea Miller, PA-C

Now accepting new patients.
 With locations in Meridian, Emmett, Mountain Home and Baker City



MUSIC MAKES CONNECTIONS when nothing else can

Music with dementia patients and stroke victims

WEB: www.musicmakesconnections.com
 EMAIL: matthewjordan@musicmakesconnections.com

CALL (208) 286-5508



IDAHO HOMECARE YOUR PROFESSIONAL HOME CARE PROVIDER

Home Care is our Passion

208.908.6080

Serving Idaho Families & Facilities since 2006



VISA MasterCard MEDICAID CERTIFIED

www.247Idahohomecare.com