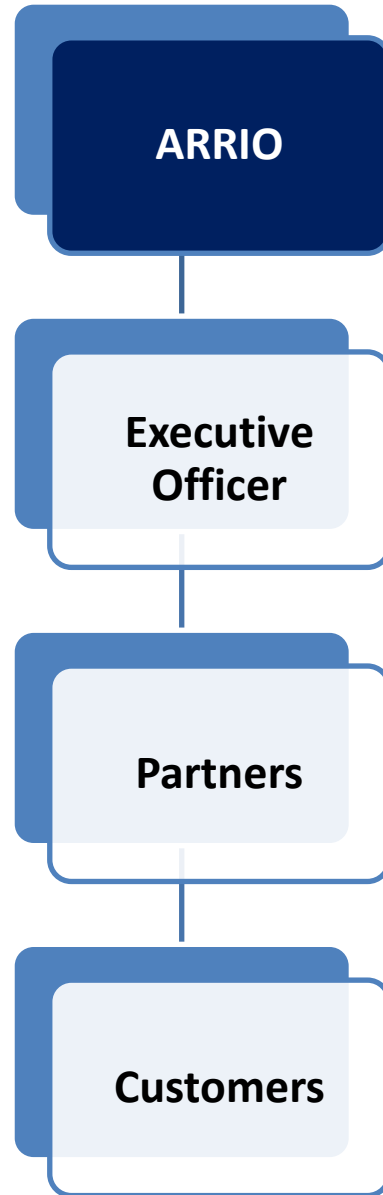




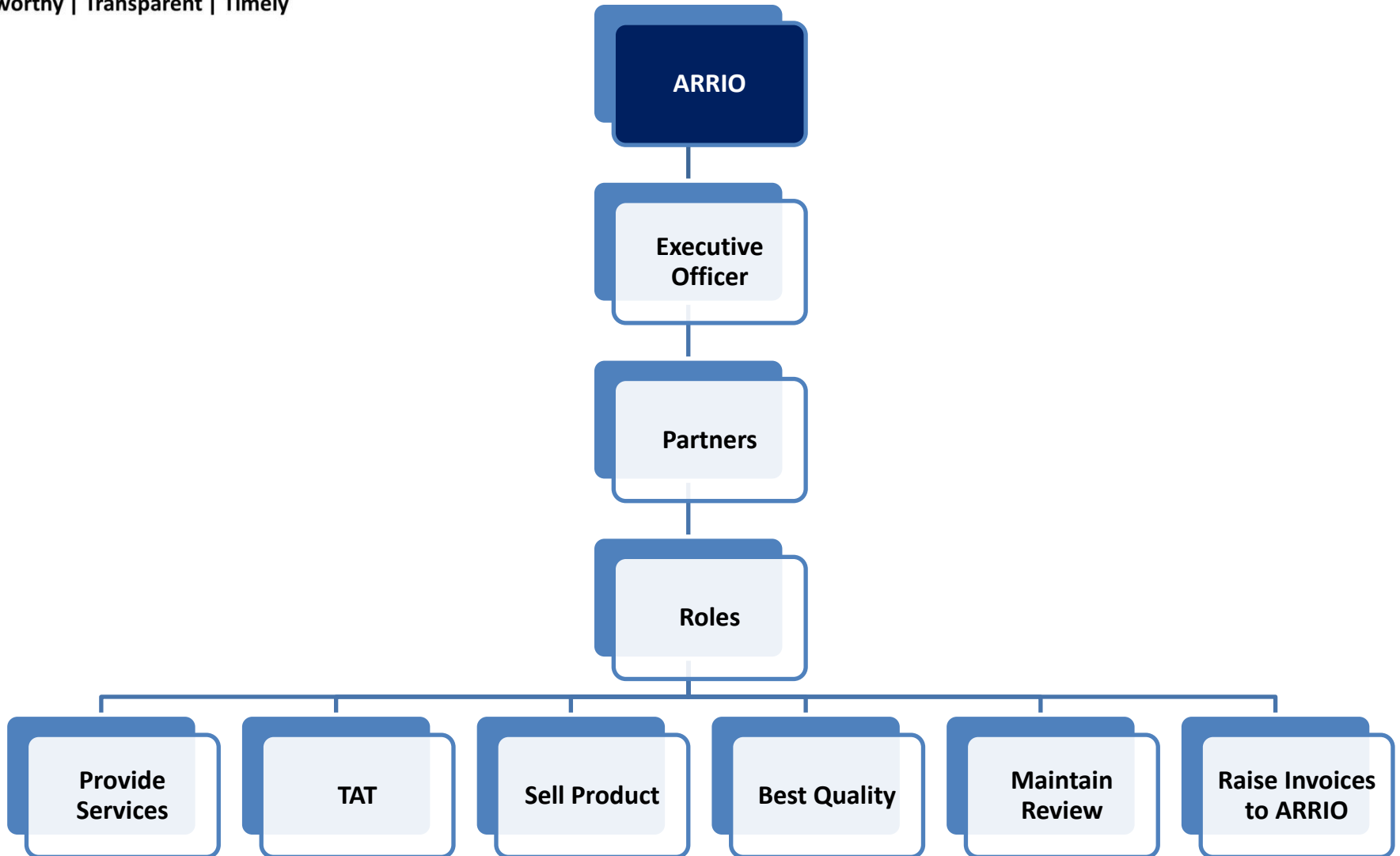
**Trustworthy | Transparent | Timely**

**ARRIO CONSULTANCY SERVICES LLP**

# Process Flow



# Partners Process Flow



# Registration Process Flow



- **Executive Officers**

- Step1: Demography
- Step2: Document Upload
- Step3: Approval

- **Partners**

- Step1: Demography
- Step2: Document Upload
- Step3: Subscription payment
- Step4: Update Services & Products
- Step5: Document check & Approval

- **Customers**

- Step1: Demography
  - **If need to become Partner**
- Step2: Document Upload
- Step3: Subscription payment
- Step4: Update Services & Products
- Step5: Document check & Approval



# Business Process Flow

## Customers

- Search
- Location wise
- Partners Links
- Update Scope / Requirement
- Raise Request
- Pop-Up to EO

## EO Activities

- Check availability of Partners
- Align Partners for Services

## Partners Roles

- Partner Accepts or Deny with Reasons
- Accepted – Give Service
- Customer Update Invoice + GST & Pay online
- Pay to ARRIO
- Feedback from Customers
- Greetings
- Partners bill be paid by ARRIO as per defined Invoicing.

## Why with ARRIO ?

- ARRIO e-Services Platform
- MULTIPLE SERVICES under one Roof
- STANDARDISED process life cycle
- TEAM in multiple verticals
- EXECUTION expertise
- CUSTOMER SATISFACTION is ensured
- EXPAND BUSINESS for any professionals experts
- COMMITTED to quality in execution process
- WIN WIN BUSINESS COLLABORATIONS

# Benefits for Stakeholders

## For Customers

- All Professional or Retail services available under one roof.
- Helps Customers to get services or information's on one click
- Any individuals can create source of Income from their existing skills
- Best monitored services for Customers
- Skill enhancement for professionals by Business Training
- Business Opportunities are open for all individuals,
- Can plan to Establish business based in available skills & resources.
- Any ARRIO customers can get converted into Business partners anytime on basis of their available skills

## For Partners

- Unlimited scope of expansion of business for partners under one roof
- Any individuals can create source of Income from their existing skills
- Consistent Business for Partners
- Supports existing business to grow consistently
- Take responsibility of Marketing for professionals.
- Helps to get Orders for any business verticals
- Responsibility to expend Existing or New business.
- Open of any Business Collaboration or Acquiring.
- Huge business platform for New business executions
- Helps to research and analysis for any new business execution
- Team helps to execute business model for any Individuals or Company
- Skill enhancement for professionals by Business Training
- Business Opportunities are open for all individuals

# Homepage



*ARRIO CONSULTANCY SERVICES*

*Welcome to  
e-Services Platform*

Signup or Login option  
for all Stakeholders

Register as Partner by  
clicking "Join as  
Partner"

  
Search by  
Locations

  
Search by "Partners Links", "Services or Partners"



# Login Page



Select "Executive Officer, Partner or Customer"

Select Title

Update "USERNAME" mentioned in Registration email

Username

Use the Password mentioned during registration

Password

Signin for Existing Stakeholder

SIGN IN

Back

Forgot password?

Use Forgot password to Change or Find the password

Don't have an account? [Create](#)

Use "CREATE" option to register as EO, Partner or Customer"

# Create Account

After Click on “CREATE” button

×

Note: Kindly select below type of Account want's to Register

Executive Officer

Customer

Partner

Please Select one of 3 Options "Executive Officer", "Customer" or "Partner".

Username

Password

SIGN IN

Back

Forgot password?

Don't have an account? [Create](#)

# Registration of Partner

Partner

After click on "Partner", Below is 1st Step for Registration Form.

Partner Creation

First Name

Enter First Name (Prefer to be in CAPITAL LETTERS)

Last Name

Enter Last Name (Prefer to be in CAPITAL LETTERS)

Mobile

Enter Mobile Number, it will be future communication mode.

EmailID

Enter Email ID, it will be future communication mode

Password

Create Password, Make sure password should have minimum 8 digit alpha numeric with special characters.

- ☐ I agree with Terms & Conditions  
☐ I agree with Privacy Policies

Please select both check box on Terms & Condition and Privacy policies as acceptance for opening account with ARRIO Consultancy Services.

Register

Home

# Registration of Partner



Dashboard



My Account



My Services



Subscriptions



## Registration form for Partners

Partner

Partner Detail **Note: all fields mark with \* is Mandatory**

Title

Select prefix from Drop down

First Name \*

Enter First Name (Prefered to be as AADHAR Card)

Last Name \*

Enter Last Name (Prefered to be as AADHAR Card)

Father/Husband Name \*

Enter Fathers / Husband name (Prefer to be as AADHAR Card)

Gender

Select from Drop Down

Marital Status

Select from Drop Down

House No

Enter Room# or House # (Prefered to be as AADHAR Card)

Street

Enter Address (Prefered to be as AADHAR Card)

Country \*

Select from Drop Down

State \*

Select from Drop Down

City \*

Select from Drop Down

Pincode \*

Enter PIN code (Prefered to be as AADHAR Card)

Mobile \*

Enter Mobile #

EmailID \*

Enter Email ID

Password \*

Follow Password policy, 8 Digit Alpha Numeric with Special Characters

Aadhar No \*

Enter AADHAR number need to be Verified





Pan No \*


Enter PAN number

Date Of Birth \*

Enter Date of Birth (Prefered to be as AADHAR Card)

# Registration of Partner

Smita 

Education Qualification	Company Name	GST No
<input type="text" value="Enter Highest Education Qualification"/>	<input type="text" value="Enter Company Name if any"/>	<input type="text" value="Enter GST# if applicable"/>
Working Since		
Year	Month	
<input type="text" value="Enter Year (eg. 1947)"/>	<input type="text" value="Enter Month (eg. Jan or Dec)"/>	
Documents		
DOB*	Address*	Customer Visit
<input type="text" value="Choose File"/> No file chosen	<input type="text" value="Choose File"/> No file chosen	<input type="text" value="No"/> 
Police NOC ( <a href="#">Request Letter</a> )	Education*	PAN*
<input type="text" value="Choose File"/> No file chosen	<input type="text" value="Choose File"/> No file chosen	<input type="text" value="Choose File"/> No file chosen
Photograph*	Agreement / Certificates*	Cancel Cheque*
<input type="text" value="Choose File"/> No file chosen	<input type="text" value="Choose File"/> No file chosen	<input type="text" value="Choose File"/> No file chosen
Medical Certificate	Net banking or QR code	
<input type="text" value="Choose File"/> No file chosen	<input type="text" value="Choose File"/> No file chosen	

# Registration of Partner



Documents Please upload .pdf, .jpeg, .tiff, with size less than 100KB

DOB\* Please upload proof of DOB (AADHAR or PAN) Address\* Upload Address Proof (AADHAR or Electricity Bill)

Choose File No file chosen

Choose File No file chosen

Upload NOC, authorised by nearest Police

Station  
Police NOC ( [Request Letter](#) )

Choose File No file chosen

Upload Highest Education Certificate

Education\*

Choose File No file chosen

Select from Drop Down as per your service Model

Customer Visit

No

YES - If there is any Customer visit

NO - If there is no Customer visit

PAN\* Upload PAN card Copy

Choose File No file chosen

Upload latest Passport size Photograph  
Photograph\*

Choose File No file chosen

Upload Agreement with ARRIO and Service Licence copy

Agreement / Certificates\*

Choose File No file chosen

Upload Cancel Cheque for future  
Online Transactions

Cancel Cheque\*

Choose File No file chosen

Upload Medical Certificate, Mostly  
Medical Certificate Covid vaccination certificate

Choose File No file chosen

Net banking or QR code

Upload Netbanking details for future Transactions

Choose File No file chosen

Update

Cancel

After all update and Document upload, click on UPDATE. This will move to Approval process to ARRIO CS

# Services - Partners



Smita ▾



My Services



Subscriptions



Add Service

Select Primary Services from Drop Down as per your expertise. If not Available Please select OTHER SERVICES and update your services.

Select Service

Select Service

Accountants Services

Architect Services

Auditors

Business Services

Chemical Engineering

Civil Engineering

Courier & Porter Services

Cyber security Services

Education Counsellor

Electrical Engineering

Entertainment Services

Evaluator

Financial Services

Healthcare Services

Household Services

HR Services

Industrial Engineering

Investment Services

IT consultant

Add

Product Description\*

Tool for Excel

Product Images

Choose File

No file chosen

Add

Product Price

INR ▾

1000.00



# Services - Partners



Smita ▾



My Services



Subscriptions



Add Service

Select Service

Select Primary Services or OTHER Services from Drowdown and ADD for Subscriptions.



Add

Business Services



Service Category\*

Consultancy

Update Secondary Services and Descriptions for Exectution and Add under Primary Services. You can add Multiple services as per your capabilities.

Product

Update Product Name used for the same Services and ADD. You can add multiple products.

Add

Excel Tool



Product Description\*

Tool For Excel

Update descriptions of Product for Customers view.

Product Images

Choose File

No File chosen

Upload .pdf with detail descriptions & Images of Product and ADD.

Add

Product Price

INR ▾

1000.00

Update Pricing of Product for Customers View



# Services - Partners

Add Service

Select Service

Select Primary Services from Drop down



Add

Business Services



Service Category\*

Consultancy

Update Secondary Services

Product

Update Product details

Add

Excel Tool



Product Description\*

Tool for Excel

Update detail descriptions of Products

Product Images

Choose File

No file chosen

Upload .pdf Product description file & Image files

Add

Product Price

INR

1000.00

Update Price of Product.

# Services - Partners



Smita ▾



Business Services

**A partner can subscribe Multiple Primary services**



Service Category\*

Consultancy

Product

Add

Excel Tool



Product Description\*

Tool for Excel

Product Images

Choose File No file chosen

Add

Product Price

INR ▾ 1000.00

Legal Services

**A partner can subscribe Multiple Primary services**



Service Category\*

Notary services

# Subscriptions - Partners



Smita ▾



Dashboard



My Account



My Services



Subscriptions



## My Subscriptions

Documents approval is pending

### Select Services & Plans for Subscriptions

My Service List

☒ Legal Services

☐ Business Services

### Select PLANS & Services for Subscription

Plan Descriptions	<input checked="" type="radio"/> Plan A	<input checked="" type="radio"/> Plan B	<input checked="" type="radio"/> Plan C
Tenure	3 Months	6 Months	1 Year
Subscription Amount	INR   500.00	INR   1000.00	INR   1200.00
Benefits & Support			
Marketing	Yes	Yes	Yes
Branding	Yes	Yes	Yes
Increase Business		Yes	Yes
Business Improvement			Yes

# Subscriptions - Partners

Subscriptions

My Service List



Legal Services



Business Services

Select Multiple Services

Plan Descriptions	Select PLAN	<input checked="" type="radio"/> Plan A	<input type="radio"/> Plan B	<input type="radio"/> Plan C
Tenure	3 Months	6 Months	1 Year	
Subscription Amount	INR   500.00	INR   1000.00	INR   1200.00	
Benefits & Support				
Marketing	Yes	Yes	Yes	
Branding	Yes	Yes	Yes	
Increase Business		Yes	Yes	
Business Improvement			Yes	

Plan	Services & Amount	
Plan A	Legal Services	Rs. 500.00
	Business Services	Rs. 500.00
Total	Invoice Amount	Rs. 1,000.00 /-

# Subscriptions - Partners



Smita ▾




Plan Descriptions	<input checked="" type="radio"/> Plan A	<input type="radio"/> Plan B	<input type="radio"/> Plan C
Tenure	3 Months	6 Months	1 Year
Subscription Amount	INR   500.00	INR   1000.00	INR   1200.00
Benefits & Support			
Marketing	Yes	Yes	Yes
Branding	Yes	Yes	Yes
Increase Business		Yes	Yes
Business Improvement			Yes

Plan	Services & Amount	
Plan A	Legal Services	Rs. 500.00
	Business Services	Rs. 500.00
Total	Rs. 1,000.00 /-	

Pay & Subscribe

Select Payment option to Subscribe and Pay the amount to ARRIO.

# Subscriptions - Partners

 Pay & Subscribe

Below details of Selected Services and Subscription details before payment execution.

## Subscription Details

Plan:	<i>Plan B</i>	<b>Selected Plan is Plan B</b>
Payment Status:	<i>Pending</i>	<b>Payment status of Subscription</b>
Tenure:	<i>6 Months</i>	<b>Selected Tenure</b>
Date :	From <b>Subscribed Start Date</b>	To <b>Subscribed End Date</b> <i>(till midnight)</i>
Services:	<div><i>Legal Services</i></div> <div><i>Business Services</i></div>	<b>Selected Services</b>

Plan:	<i>Plan B</i>
Payment Status:	<i>Pending</i>
Tenure:	<i>6 Months</i>
Date :	From To <i>(till midnight)</i>
Services:	

# Subscriptions - Partners



Smita ▾



Dashboard



My Account



My Services



Subscriptions



## Order Summary

### Info

#### Partners Demographic Informations

Smita Ajay

helpdeskarrriocs@gmail.com

9702433345

### Product

Plan A

Seleted Plan & Describtions of Plan as per Invoiced Terms

Plan Description

500.00

Price of selected Plan for InvoicingTerms

### Price Details

Price (0 Services)

TotalServiceAmt

CGST (9.00%)

**Total Subsription charges with GST &  
Discount if any. Total due Amount will  
be Transperant to Partner with  
Required Taxes implemented.**

CgstAmt

SGST (9.00%)

SgstAmt

Discount

0.00

Total Amount

0.00

Proceed To Pay

Cancel

# Subscription Plans

## ARRIO e-Services Platform

Plan Descriptions		PLAN A	PLAN B	PLAN C
Tenure	Period of Subscription Valid for our Services from or ARRIO e-Services Platform	3 Months	6 Months	1 Year
Subscription Amount	Subscription charges to get below mentioned benefits & Support from ARRIO e-Services	INR   199.00	INR   299.00	INR   499.00
Benefits & Support				
Marketing	ACSL will execute process of Go-T0 Market for Partners	Yes	Yes	Yes
Branding	ACSL will publish your services or Products under our brand and platform of ARRIO	Yes	Yes	Yes
Increase Business	ACSL will help to increase and expand your business as per your capacity and capability to explore.		Yes	Yes
Business Improvement	ACSL will help to improvise the process and expand your business globally as per your capacity and capability to explore.			Yes





# Thank You