



Hammer Energy Test Report

in accordance with BSEN ISO 22476-3:2005

Dynamic sampling
Unit 8
Victory parkway
Victory rd
Derby
DE24 8ZF

Hammer Ref: DUKE.CT72
Test Date: 30/03/2021
Report Date: 30/03/2021
File Name: DUKE.CT72.spt
Test Operator: AP

Instrumented Rod Data

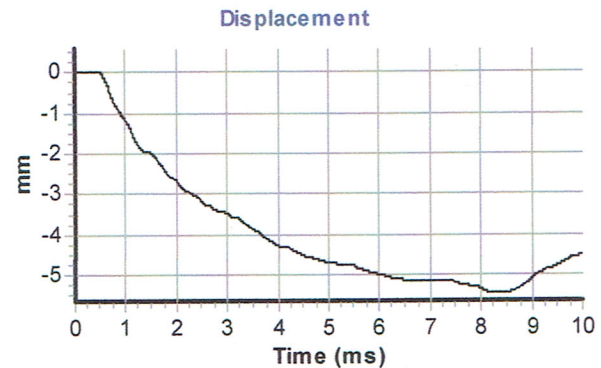
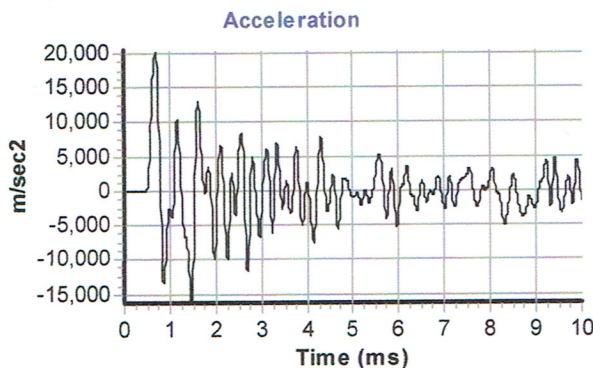
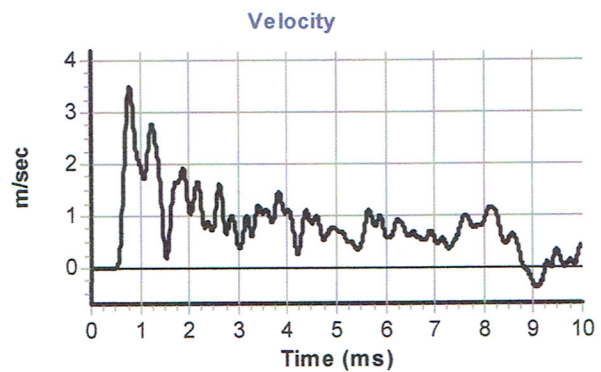
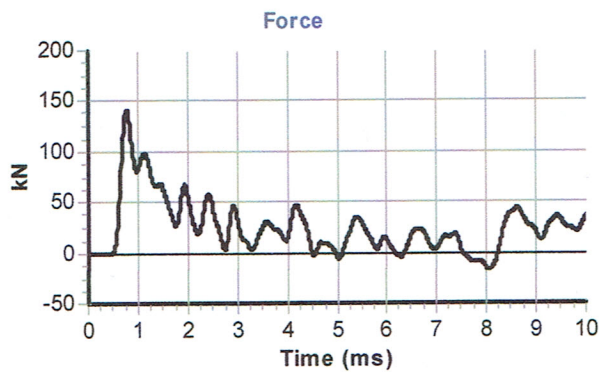
Diameter d_r (mm): 54
Wall Thickness t_r (mm): 6.0
Assumed Modulus E_a (GPa): 208
Accelerometer No.1: 62901
Accelerometer No.2: 62902

Hammer Information

Hammer Mass m (kg): 63.5
Falling Height h (mm): 760
String Length L (m): 15.0

Comments / Location

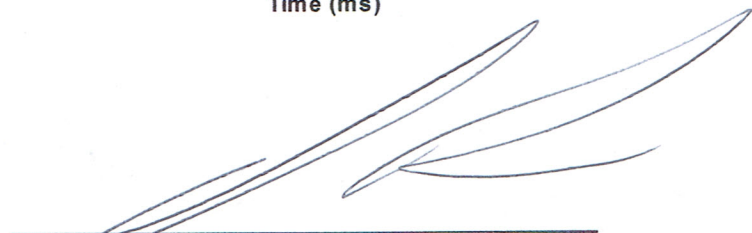
Hammer tested at Dynamic samplings yard.



Calculations

Area of Rod A (mm²): 905
Theoretical Energy E_{theor} (J): 473
Measured Energy E_{meas} (J): 327

Energy Ratio E_r (%): 69


Signed: A.parker
Title: Associate Director

The recommended calibration interval is 12 months