



Hammer Energy Test Report

in accordance with BSEN ISO 22476-3:2005

Dynamic Sampling Uk Ltd
Unit 8 Victory Park
Victory Road
Derby
DE24 8ZF

Hammer Ref: CT72
Test Date: 12/03/2022
Report Date: 12/03/2022
File Name: CT72.SPT
Test Operator: B.HUNTER

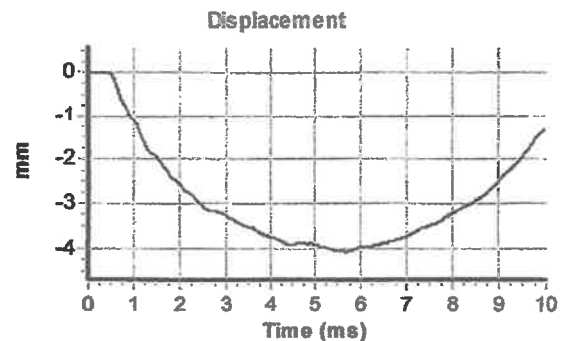
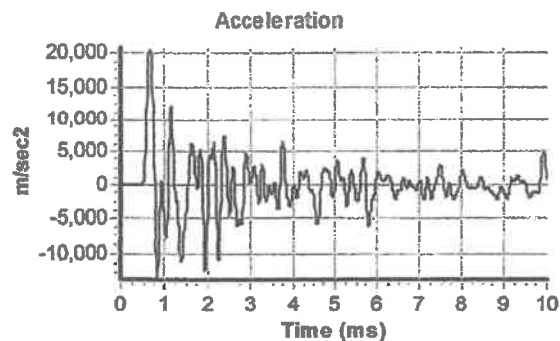
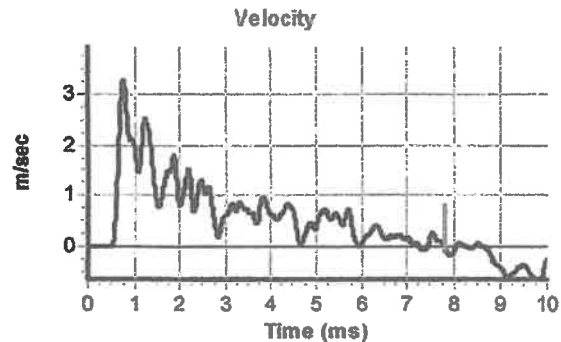
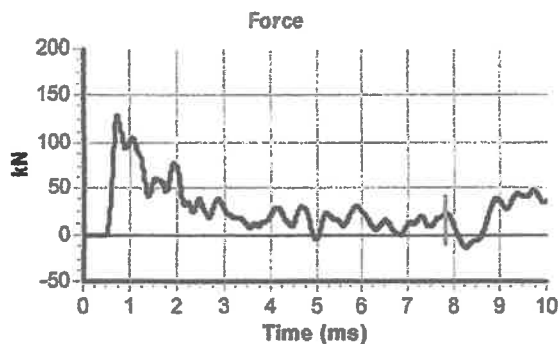
Instrumented Rod Data

Diameter d_r (mm): 54
Wall Thickness t_r (mm): 6.5
Assumed Modulus E_a (GPa): 208
Accelerometer No.1: 62901
Accelerometer No.2: 62902

Hammer Information

Hammer Mass m (kg): 63.5
Falling Height h (mm): 760
String Length L (m): 10.0

Comments / Location



Calculations

Area of Rod A (mm^2): 970
Theoretical Energy E_{theor} (J): 473
Measured Energy E_{meas} (J): 278

Energy Ratio E_r (%): 59

Signed: B.Hunter
Title: Operations Manager

The recommended calibration interval is 12 months