

# DAF XF530 CRANE WAGON DATA SHEET (COMPANY HOLDING 1NO)

The DAF XF530 crane wagon is versatile and capable of assisting with SOCOTEC UK's internal transport requirements.

Capabilities include:

- ▶ Tier VI engine for use inside most metropolitan low emission zones.
- ▶ Large crane capable of lifting up to 3080kg at a distance of up to 14.20m.
- ▶ Designated driver employed by SOCOTEC UK.
- ▶ 3.8m folding and width adjustable ramps
- ▶ Fully compliant with the latest FORS regulations
- ▶ 25000kg load capacity depending on trailer
- ▶ 2 trailers available

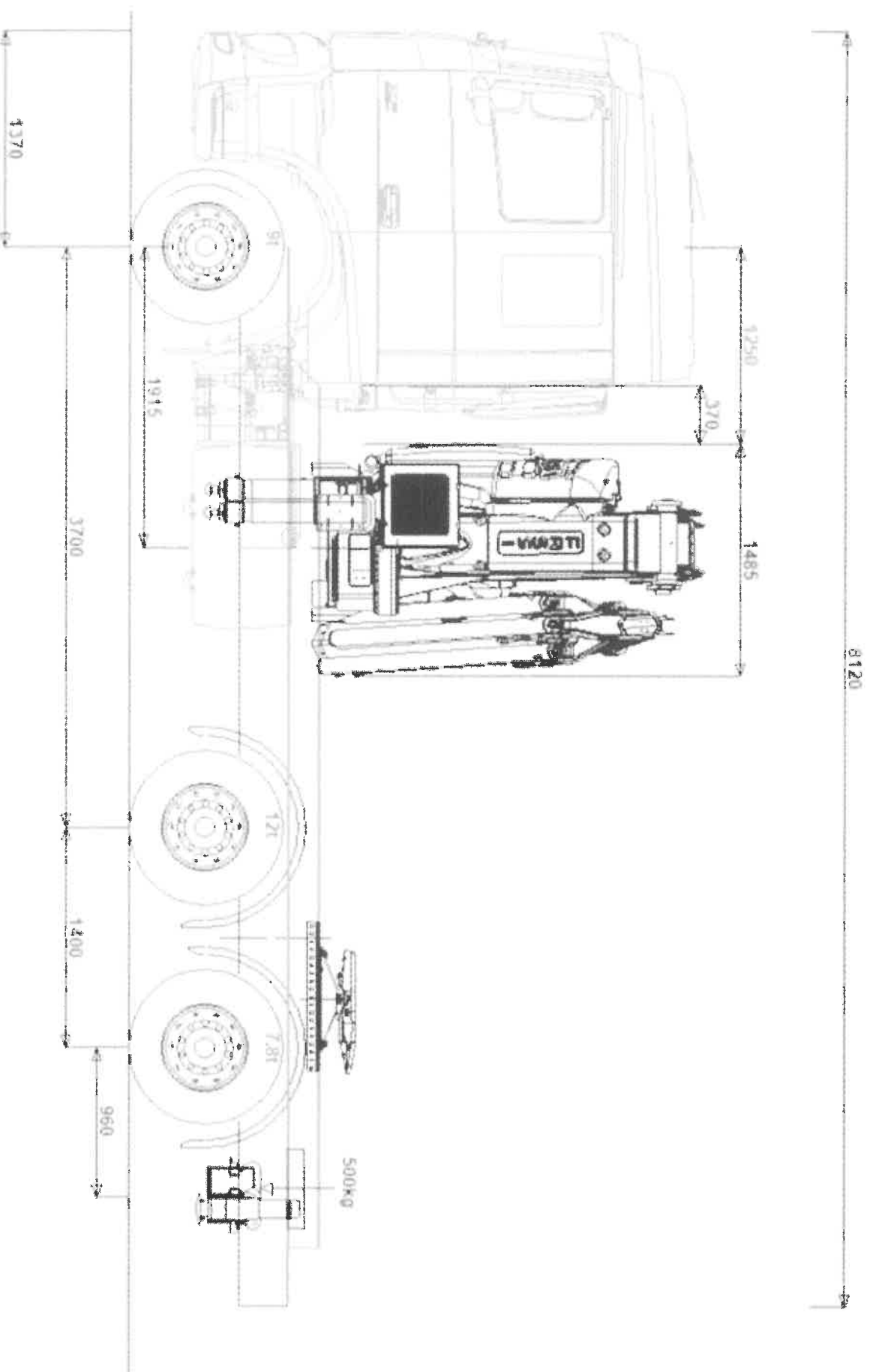


Contact: [salesuk@socotec.com](mailto:salesuk@socotec.com)



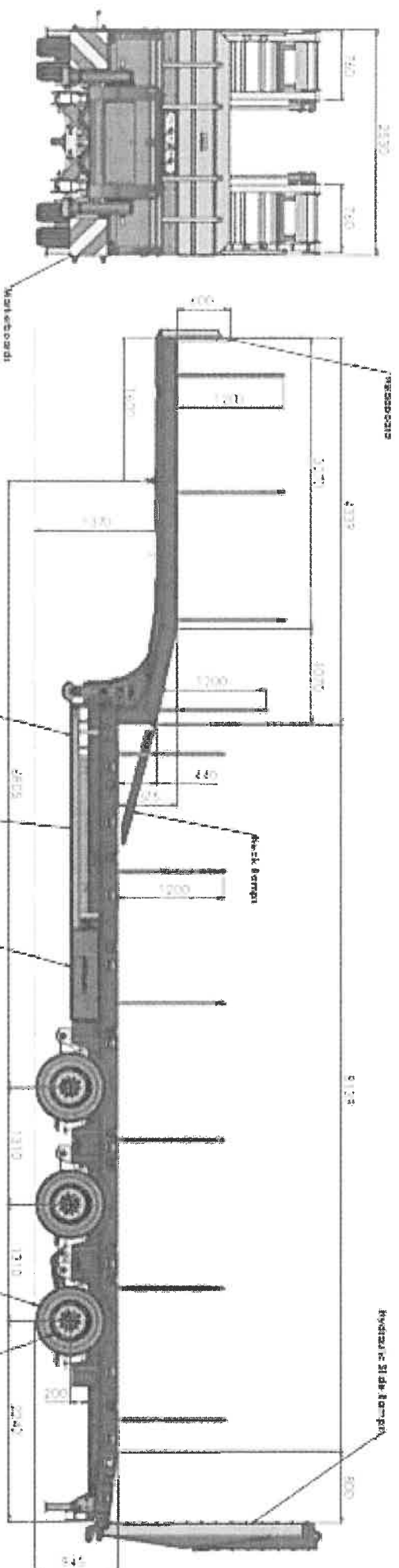
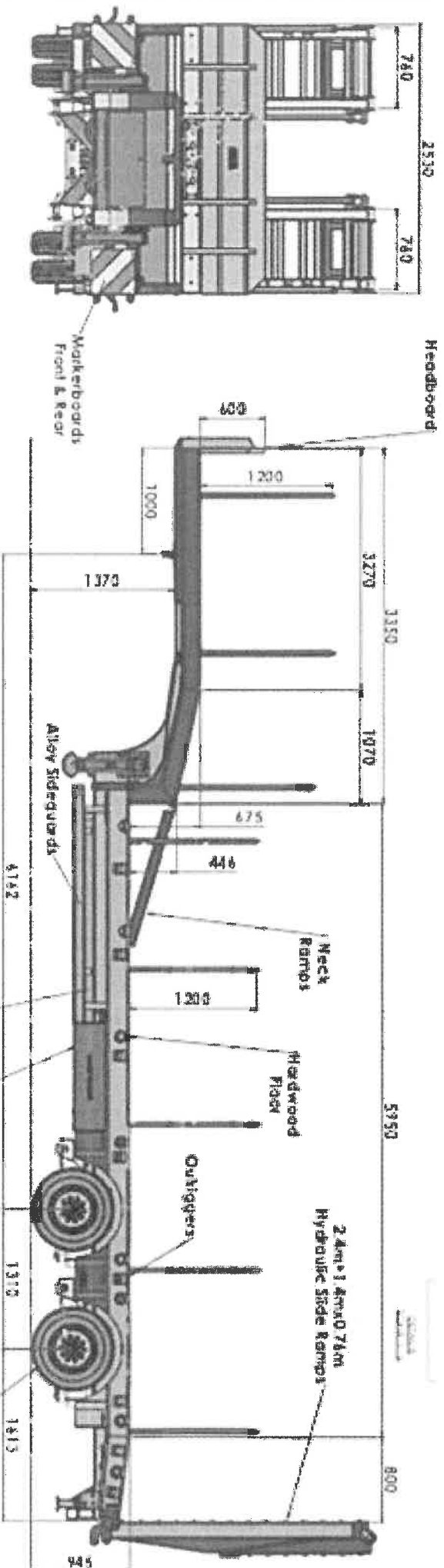
**SOCOTEC**

# DAF XF530 CRANE WAGON DATA SHEET (COMPANY HOLDING 1NO)



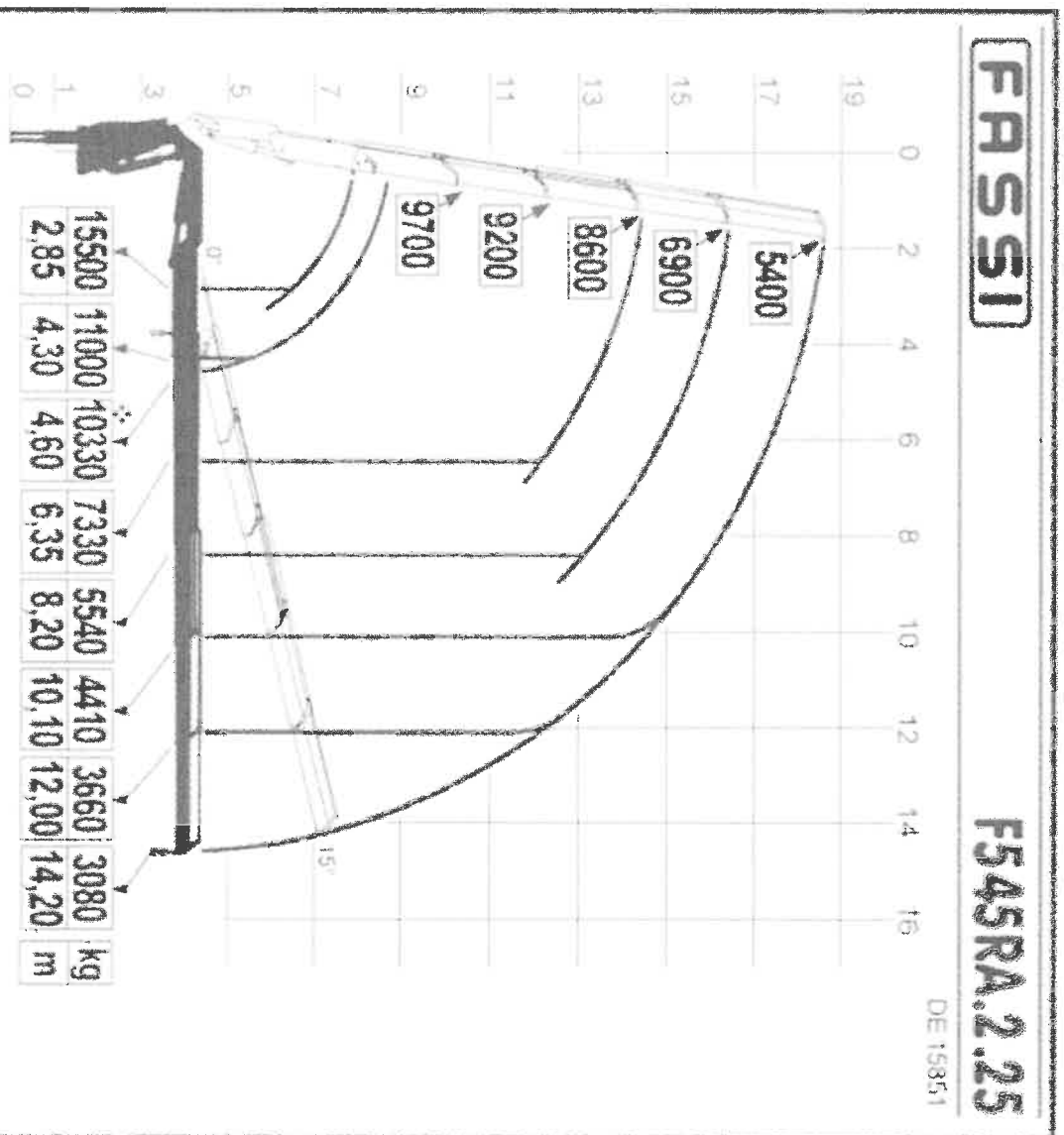
Contact: [salesuk@socotec.com](mailto:salesuk@socotec.com)

# DAF XF530 CRANE WAGON DATA SHEET (COMPANY HOLDING 1NO)



Contact: [salesuk@socotec.com](mailto:salesuk@socotec.com)

# DAF XF530 CRANE WAGON DATA SHEET (COMPANY HOLDING 1N0)



**FASSI**

**F545RA.2.25**

DE 15851

Contact: [salesuk@socotec.com](mailto:salesuk@socotec.com)