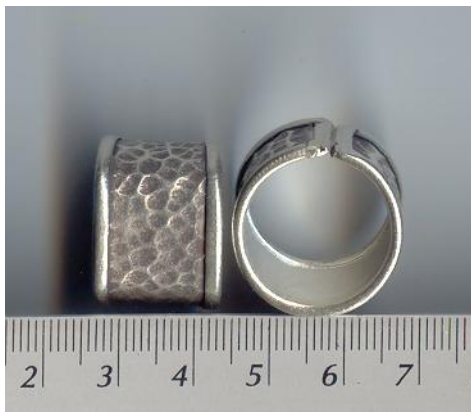


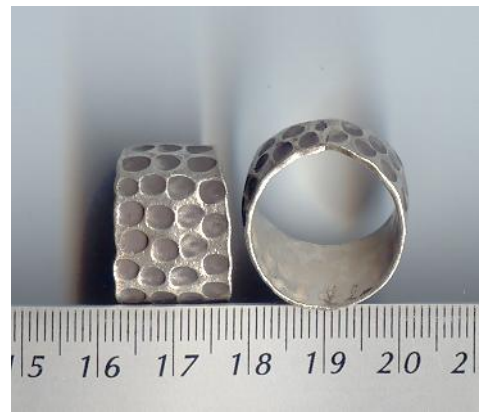
# Ring



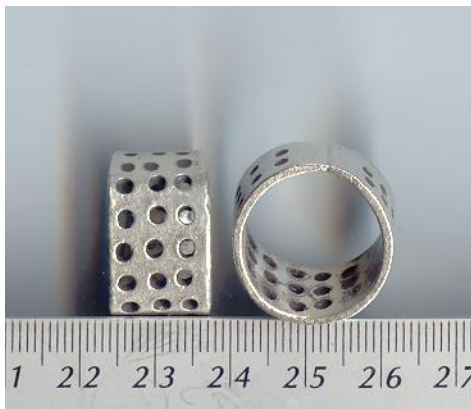
**RR 049 11 gr**



**RR 050 12 gr**



**RR 051 10 gr**



**RR 052 10 gr**



**RR 053 6 gr**



**RR 054 6 gr**



**RR 055 7 gr**



**RR 056 8 gr**



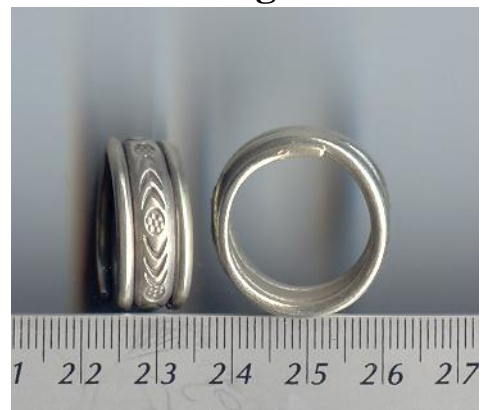
**RR 057 13 gr**



**RR 058 11 gr**



**RR 059 11 gr**



**RR 060 11 gr**