

01752 706361

✉ edison@discoveryMAT.co.uk

🌐 www.PlymouthPrimaryNuture.co.uk

CEO: Mrs Alison Nettleship
Lead : Mrs Lindsay Cooper-Smith

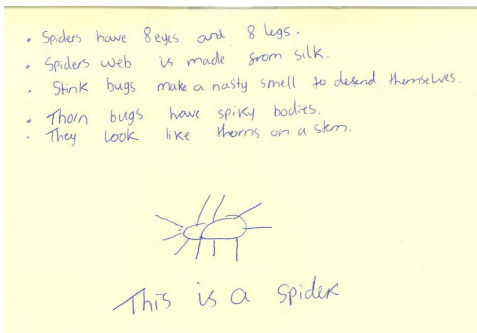
January 2024



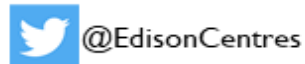
Reintegration is the most important part of our Edison placements.

- We encourage the home schools to come and visit the children while they are at the centre.
- Children wear their school uniform whilst they are with us.
- We send a report at 3 weeks and hold a meeting and CPD for school staff at 6 weeks.

Work of the week



Follow us on social media!



We invite parents in to work with their children. This gives them the opportunity to look through the work they have completed whilst they are with us and share in their child's success.

PPN are open for referrals from Foundation to Year 6, Outreach EYFS to KS2 and Forest School. Please visit our website:

plymouthprimarynurture.co.uk

93%

93% of Multi Academy Trusts have referred to PPN more than once.