

WEST VIRGINIA RURAL WATER ASSOCIATION ANNUAL TECHNICAL CONFERENCE



Mail form to: 100 Young St., Scott Depot, WV 25560
Fax form to: 304-201-1694

WVRWA ANNUAL CORNHOLE COMPETITION

Format: Single elimination with winners advancing to the finals

Time: Sunday, August 15, 2021 at 12:00 p.m.

Teams: 2 person teams—if you have a partner, fill out the form below with both names. If you don't have a partner, fill in your name on the form below and we will place you with a partner.



Name: _____ **Name:** _____

System: _____ **System:** _____

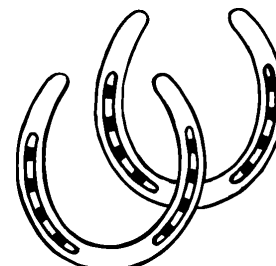
Cutoff for participation will be 15 minutes before the start time

WVRWA ANNUAL HORSESHOE COMPETITION

Format: Single elimination with winners advancing to the finals

Time: Sunday, August 15, 2021 at 1:30 p.m.

Teams: 2 person teams—if you have a partner, fill out the form below with both names. If you don't have a partner, fill in your name on the form below and we will place you with a partner.



Name: _____ **Name:** _____

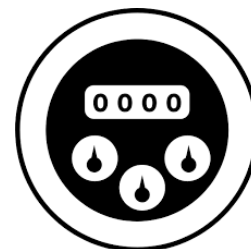
System: _____ **System:** _____

Cutoff for participation will be 15 minutes before the start time

WVRWA ANNUAL METER TOSS COMPETITION

Format: Single elimination with winners advancing to the finals

Time: Sunday, August 15, 2021 at 3:30 p.m.



Name: _____ **System:** _____

Cutoff for participation will be 15 minutes before the start time

WEST VIRGINIA RURAL WATER ASSOCIATION ANNUAL TECHNICAL CONFERENCE



Mail form to: 100 Young St., Scott Depot, WV 25560
Fax form to: 304-201-1694

WVRWA ANNUAL TRACK HOE COMPETITION

Time: Sunday, August 15, 2021 at 12:30 p.m.

Equipment: John Deere 50G or 60G



Name: _____

System: _____

Deadline for submissions is August 6, 2021. If there aren't enough participants at this time, then the competition will be cancelled.

WVRWA ANNUAL WATER TAPPING COMPETITION

Time: Sunday, August 15, 2021 at 2:30 p.m.

Scoring: The event will be judged on safety, accuracy, penalty defects, and total time

Teams: 2 person teams—if you have a partner, fill out the form below with both names. If you don't have a partner, fill in your name on the form below and we will place you with a partner.



Participants are required to bring the appropriate safety apparel.

Name: _____ **System:** _____

Name: _____ **System:** _____

Cutoff for participation will be 15 minutes before the start time