



# SPECTRUM

Your trusted name in healthcare apparel and accessories



Scrubs  
Lab Coats  
Stethoscopes  
Sphygmomanometer  
Medical Shears  
Bags  
Accessories  
and more!

**Volume  
24**

# The Spectrum Promise

Still “*Always Bright*”



Thank you for choosing Spectrum Uniforms as your trusted source for healthcare apparel, medical accessories, diagnostic equipment and PPE supplies.

With over 30 years of experience in the manufacturing industry, we have garnered a reputation of supplying high-quality, affordable and customized apparel to you customers.

We know and believe that the key to being recognized throughout the industry as a trusted leader in healthcare apparel and accessories is to continue to provide the best quality product at the most competitive prices. We also know that sometimes selling within this field can be challenging to navigate. That is why we love partnering with distributors to work together to find opportunities and build something that is tailored to your customer. If there is something, we can do to further enhance your experience, please let us know!

## ***But, why still always bright?***

When we first began marketing the Spectrum Brand, we embraced the tagline “Always Bright”. It was an upbeat nod to the brightness of our scrubs (*fuschia and lilac were in style then!*) and how they are designed to stay vibrant wash-after-wash.

Today it speaks to how we conduct ourselves, and what we want to put out into the world. We want everyone in our community to see the future as bright—and it is for all of us to do our part to make sure that happens. We do it by creating an inclusive culture and making scrubs that our frontline heroes can wear—all while partnering with organizations that are doing their part to also ensure a bright future.

## The Spectrum Uniforms Team





### Spectrum Scrubs

Discover our selection of Scrub Tops, Scrub Pants and Scrub Jackets.

6-27

## UltraSMART *and safe!*



### UltraSmart Lab Coats & PPE

Antimicrobial lab coats offered in a variety of styles and lengths.

Safety garments and Accessories

28-35

**SPECTRUMPRO**  
QUALITY MEDICAL TOOLS SINCE 1989



### SpectrumPro

Featuring quality stethoscopes, medical shears, reflex hammers and more, our line of medical devices and tools are all made to meet or exceed industry standards.

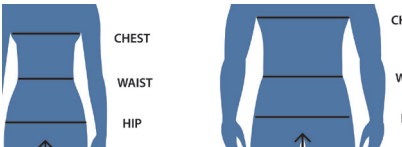
36-47



### Organizers and Bags

From small wrist wallets to large duffel bags, Spectrum offers a variety of bags, totes and organizers to keep your essentials close at hand.

48-51



### Sizing

52-53

Our goal at Spectrum is to provide quality scrubs at an attractive price, along with outstanding personal customer service and care.



Buy Online



Blind Shipping



In-House Decorating



Payment Terms



Custom Designs



Guaranteed Satisfaction

# Our Scrubs

**At Spectrum we understand everyone's needs are unique.**

That's why we strive to provide options to meet those needs. Whether it's the dynamic challenge of outfitting hundreds of new students with the change of each semester—or finding the perfect hue to radiate warmth and compassion to the special patients in your specialized care—Spectrum has you covered.

## THE SPECTRUM BRAND LINES

Introducing our newest line of scrubs!

**Ultra**  *Stretch*

Super stretchy and available in a wide selection of colors.

Our new mid-priced option with most sought after features is certain to be a best-seller!



When they want fashion, fit and the very best in comfort and craftsmanship, nothing is better than our top tier WYND line.

**UltraSoft**

Quality-made classic scrubs, ultra-brushed for super softness. This workhorse is dependable and our most economical option.

**UltraSMART**

Smart Lab Coat styles enhanced with an antimicrobial finish and available in a variety of styles and lengths.

**SPECTRUMPRO**

Tried and tested, professional quality medical tools and accessories to get the job done.



Let's face it—work is hard enough—the *fabric you wear shouldn't be.*

# Colors

Our color options are designed to meet the demands of the healthcare industry. If you require a color not shown, reach out and let us know. Your input helps our team forecast future product. Additionally, for orders with sufficient lead time that meet the MOQ\*\* for custom colored fabric, we can create the perfect hue for you.

\*PMS/Pantone Colors listed are a close match to the scrub fabric. It is only provided to be a helpful tool, not to suggest as an exact match.

## UltraSoft



**Black**  
PMS Match\* Black 3C

**Ceil Blue**  
PMS Match\* 659C

**Wine**  
PMS Match\* 209C

**Royal Blue**  
PMS Match\* 2728C

**Navy Blue**  
PMS Match\* 282C

**Caribbean Blue**  
PMS Match\* 308C

**Purple**  
PMS Match\* 2745U

**Hunter Green**  
PMS Match\* 568C

**Grey**  
PMS Match\* 430C

**Teal**  
PMS Match\* 322C

**White**  
PMS Match\* White

**Khaki**  
PMS Match\* 4525U

**Burnt Orange**  
PMS Match\* 1605C

**Red**  
PMS Match\* 201

## UltraStretch



**Black**  
PMS Match\* Black 3C

**Ceil Blue**  
PMS Match\* 659C

**Wine**  
PMS Match\* 209C

**Royal Blue**  
PMS Match\* 3597

**Navy Blue**  
PMS Match\* 2767C

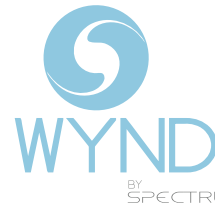
**Grape**  
PMS Match\* 2112C

**Hunter Green**  
PMS Match\* 568C

**Steel Grey**  
PMS Match\* 7540C

**Teal Sea**  
PMS Match\* 2230

**Red**  
PMS Match\* 201



**Black**  
PMS Match\* Black 3C

**Royal Blue**  
PMS Match\* 2145

**Navy Blue**  
PMS Match\* 2767C

**Steel Grey**  
PMS Match\* 7540C

**Caribbean Blue**  
PMS Match\* 4160

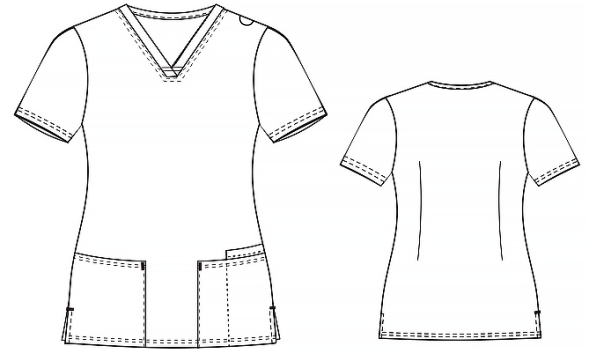
**White**  
PMS Match\* White (Top styles only)

**Great things happen when a person spends most of each day in scrubs.**

At Spectrum, our mission is to make every scrub, lab coats and instrument that carries the Spectrum logo be of a quality and craftsmanship worthy for the task it is designed.

# Ultra Stretch

**Style 625 & 635 Colors:**  
Black, Navy Blue, Ceil Blue,  
Wine, Hunter Green, Red,  
Royal Blue, Grape,  
Steel Grey, Teal Sea



## 625

### Womens UltraStretch Multi-Pocket Scrub Top

Fabric: 95% Polyester/5% Spandex

Available Sizes: XXS - 5X

Fabric Weight: 5 oz.

- Womens fit
- 4 Front pockets
- Double top-stitch
- Flattering V-Neck
- Back darts
- Side-slits
- 4-way stretch
- Double top-stitch
- Wrinkle resistant
- 10 Color options

4 Separate  
Lower Pockets





# 635

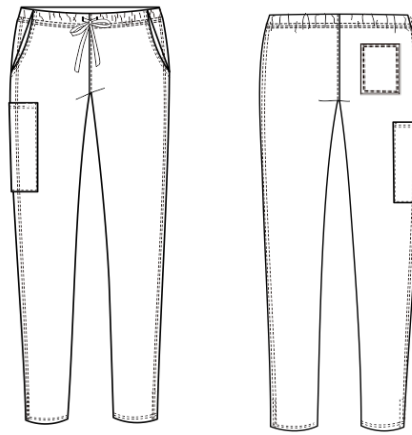
## Womens UltraStretch Cargo Scrub Pant

Fabric: 95% Polyester/5% Spandex

Available Sizes: XXS - 5X

Fabric Weight: 5 oz.

- Womens fit
- 2 Front waist pockets
- 1 Back patch pocket
- 1 Right cargo leg pocket
- Full elastic waist
- Coordinating drawstring
- 4-way stretch
- Double top-stitch
- Wrinkle resistant
- 10 Color Options



Ultra  Stretch

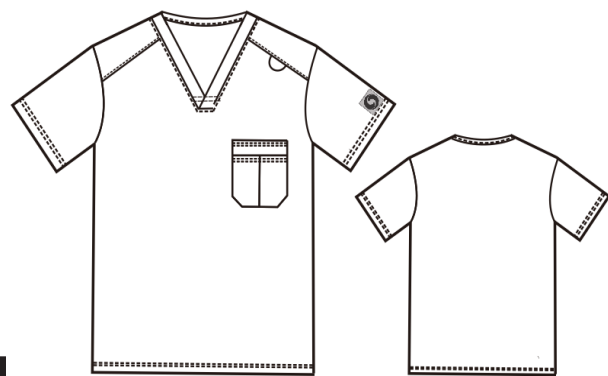


### *Relaxed or Fitted?*

How a person chooses to wear scrubs often comes down to personal preference. Some enjoy a loose, generous fit, while others opt for a more form-fitted look. With a generous 5% Spandex, UltraStretch's 4-way stretch fabric looks good either way.

**Simply size up or size down to enjoy the scrub look preferred!**

# Ultra Stretch



## 620 Mens UltraStretch. Multi-Pocket Scrub Top

Fabric: 95% Polyester/5% Spandex

Available Sizes: XS - 4X

Fabric Weight: 5 oz.

- Mens sizing/Unisex option
- Chest pocket w/Tri-Sections
- Double top-stitch
- Roomy v-neck
- 4-way stretch
- Double top-stitch
- Wrinkle resistant
- 10 Color options

Left Chest  
Tri-Pocket







**Style 620 & 630 Colors:**

Black, Navy Blue, Ceil Blue, Wine, Hunter Green, Red, Royal Blue, Grape, Steel Grey, Teal Sea



**630**

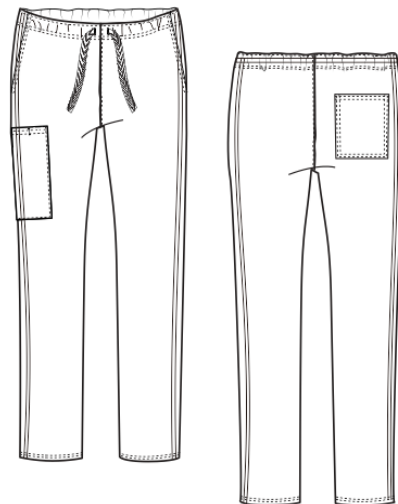
**Mens UltraStretch Cargo Scrub Pant**

Fabric: 95% Polyester/5% Spandex

Available Sizes: XS - 4X

Fabric Weight: 5 oz.

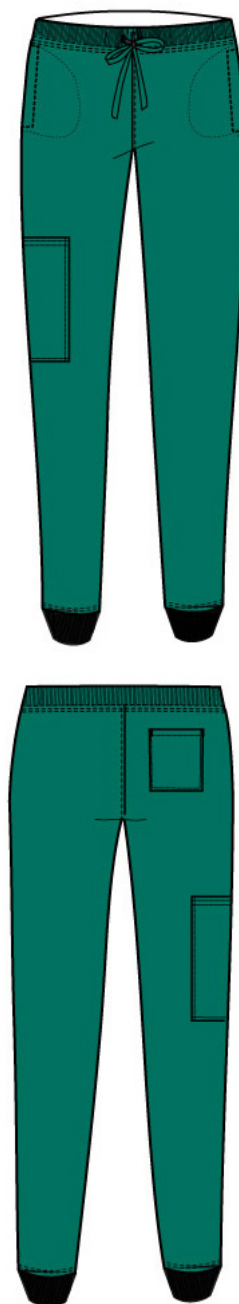
- Mens fit
- 2 Front waist pockets
- 1 Back patch pocket
- 1 Right cargo leg pocket
- Full elastic waist
- Coordinating drawstring
- 4-way stretch
- Double top-stitch
- Wrinkle resistant
- 10 color options



# Ultra Stretch Joggers!



Whether worn for function or fashion, our new UltraStretch Jogger Pants will provide a fabulous fit!



# 636

## Womens UltraStretch Jogger Scrub Pant

Fabric: 95% Polyester/5% Spandex

Available Sizes: XXS - 5X

Fabric Weight: 5 oz.

- Double top-stitch
- 4-way stretch
- 2 generous front waist pockets
- 1 back patch pocket
- 1 right cargo leg pocket
- Roomy jogger leg
- Coordinating stretchy ankle cuffs
- Coordinating drawstring/waistband



### Style 636 & 631 Colors:

Black, Navy Blue, Ceil Blue, Wine, Hunter Green, Red, Royal Blue, Grape, Steel Grey, Teal Sea



# 631

## Mens UltraStretch Jogger Scrub Pant

Fabric: 95% Polyester/5% Spandex

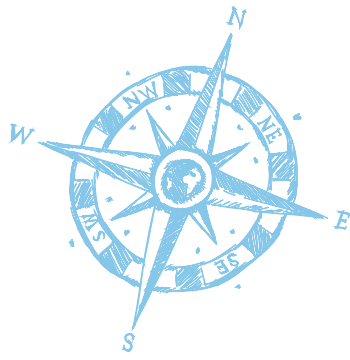
Available Sizes: XS - 5X

Fabric Weight: 5 oz.

- Double top-stitch
- 4-way stretch
- 2 generous front waist pockets
- 1 back patch pocket
- 1 right cargo leg pocket
- Roomy jogger leg
- Coordinating stretchy ankle cuffs
- Coordinating drawstring/waistband



Ultra  Stretch



Wonderfully Wearable

4-Way Stretch

A generous amount of spandex provides sturdy suppleness.

Think of it as workout wear for work.

**So comfy you'll want to wear it all the time!**

Style 825 & 835 Colors:  
Black, Royal Blue, Navy Blue,  
Steel Grey, Caribbean Sea, White\*

\*825 only



# 825

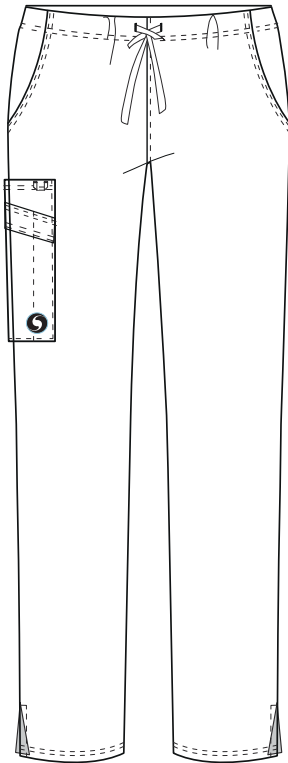
## Womens WYND Multi-Pocket Scrub Top

Fabric: 78% Poly - 16% Rayon - 6% Spandex

Available Sizes: XXS - 4X

Fabric Weight: 6 oz.

- 4 Front pockets
- Double top-stitch
- Flattering V-Neck
- Sleek side-slits
- 4-way stretch
- Antimicrobial finish
- Ultra-Brushed
- Wrinkle resistant



# 835

## Womens WYND Cargo Scrub Pant

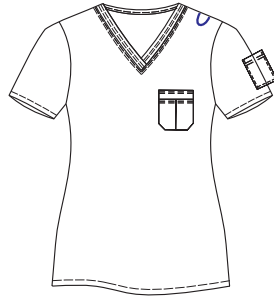
Fabric: 78% Poly - 16% Rayon  
6% Spandex

Available Sizes: XXS - 4X

Fabric Weight: 6 oz.

- 2 Front pockets
- 2 Back pockets
- Double top-stitch
- Bottom pant side-slits
- 1 Right cargo leg double pocket
- Comfy drawstring & elastic waist
- 4-way stretch
- Antimicrobial finish
- Ultra-Brushed
- Wrinkle resistant





## 826 Womens WYND Tuckable Scrub Top

Fabric: 78% Poly - 16% Rayon - 6% Spandex

Available Sizes: XXS - XL

Fabric Weight: 6 oz.

- 4-way stretch
- Antimicrobial finish
- Left chest Tri-Pocket (3 sections)
- Left Sleeve pocket
- Shoulder badge loop
- Double top-stitch
- Worn tucked or loose
- Ultra-Brushed
- Wrinkle resistant

Style 826 & 821 Colors:  
Black, Royal Blue, Navy Blue, Steel Grey,  
Caribbean Sea Blue, White



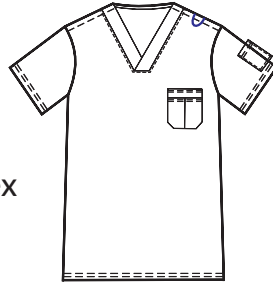
# 821

## Mens WYND Tuckable Scrub Top

Fabric: 78% Poly - 16% Rayon - 6% Spandex

Available Sizes: XXS - XL

Fabric Weight: 6 oz.



- 4-way stretch
- Antimicrobial finish
- Left chest Tri-Pocket (3 sections)
- Left Sleeve pocket
- Shoulder badge loop
- Double top-stitch
- Worn tucked or loose
- Ultra-Brushed
- Wrinkle resistant

### FABRIC FEATURES



#### 4-Way Stretch

A generous amount of spandex provides sturdy suppleness.

Think of it as workout wear for work.



#### Antimicrobial Finish

Inhibits the growth of microbes to offer protection, durability and freshness.



#### Ultra-Brushed

Breezy soft fabric that retains its color wash after wash.



#### Wrinkle Resistant

Designed to provide freshness and hold its stylish shape all day long.





## FABRIC FEATURES



### 4-Way Stretch

A generous amount of spandex provides sturdy suppleness.

Think of it as workout wear for work.



### Antimicrobial Finish

Inhibits the growth of microbes to offer protection, durability and freshness.



### Ultra-Brushed

Breezy soft fabric that retains its color wash after wash.



### Wrinkle Resistant

Designed to provide freshness and hold its stylish shape all day long.



Wonderfully Wearable



Silvadur's patented feature remains active on fabric, wash after wash.

  
**WYND**  
BY  
SPECTRUM



# 820

## Mens WYND Multi-Pocket Scrub Top

Fabric: 78% Poly - 16% Rayon - 6% Spandex

Available Sizes: XS - 4X

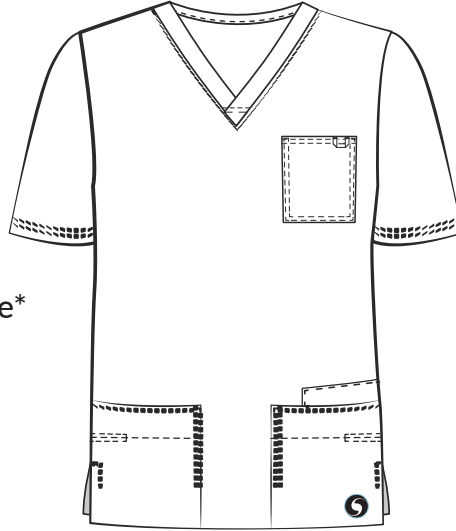
Fabric Weight: 6 oz.

- 4 Front pockets
- Double top-stitch
- Comfortable V-Neck
- Sleek side-slits
- 4-way stretch
- Antimicrobial finish
- Ultra-Brushed
- Wrinkle resistant

Style 820 & 830 Colors:

Black, Royal Blue, Navy Blue,  
Steel Grey, Caribbean Sea, White\*

\*820 only



# 830

## Mens WYND Cargo Scrub Pant

Fabric: 78% Poly - 16% Rayon - 6% Spandex

Available Sizes: XS - 4X

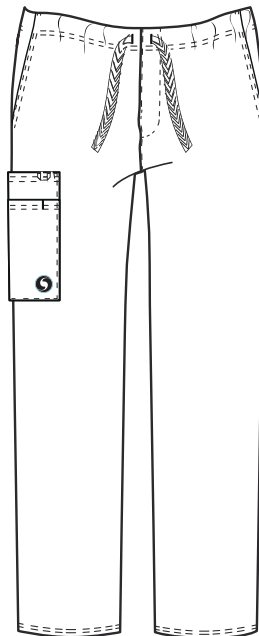
Fabric Weight: 6 oz.

- 2 Back pockets
- 1 Right cargo leg double pocket
- Functional front zipper
- Double top-stitch
- 4-way stretch
- Antimicrobial finish
- Ultra-Brushed
- Wrinkle resistant



Bonus Bag!

Each garment arrives in a bio-friendly  
11" x 15.5" zippered bag that can be  
conveniently repurposed.





# 220C

## Unisex V-Neck Scrub Top

Fabric: Brushed 65/35 PC Poplin

Available Sizes: XXS -5X\*

Fabric Weight: 4.5 oz.

- Unisex
- V-neck
- Left chest pocket
- Set-in sleeves

A traditional fit, with single chest pocket.



### CORE COLORS:

Black, Ceil Blue, Wine, Royal Blue, Navy Blue



### SECONDARY COLORS:

Carribbean Blue, Purple, Hunter Green, Grey, Teal, White, Khaki



### Available Blank or Decorated



The perfect canvas to tell your story.

Embroidery ❖ Heat Transfer ❖ Patches

Choose one or a combination of two—or all!



### V-Neck

Comfy and classic

### Set-in sleeves

For room to move

### Left chest pocket

To carry stuff—like a penlight (we sell them on page 31)

Cozy and comfy tunic offers two lower pockets to allow plenty of space for storing.



## 221C Unisex V-Neck Scrub Tunic

Fabric: Brushed 65/35 PC Poplin

Available Sizes: XXS - 5X\*

Fabric Weight: 4.5 oz.\*\*

- Unisex
- Side vents
- Two lower pockets
- Set-in sleeves

### CORE COLORS:

Black, Ceil Blue, Wine, Royal Blue, Navy Blue



### SECONDARY COLORS:

Caribbean Blue, Purple, Hunter Green, Grey, Teal, White, Khaki, Red



### Ultra-brushed

To feel soft on the skin

### Vibrant color choices

Stay bright wash after wash

### Ample pockets

To stash stuff—like a stethoscope  
*(we sell them on pages 26-27)*

### Sensible design

For comfortable movement that won't bind

**Quality without high cost.**



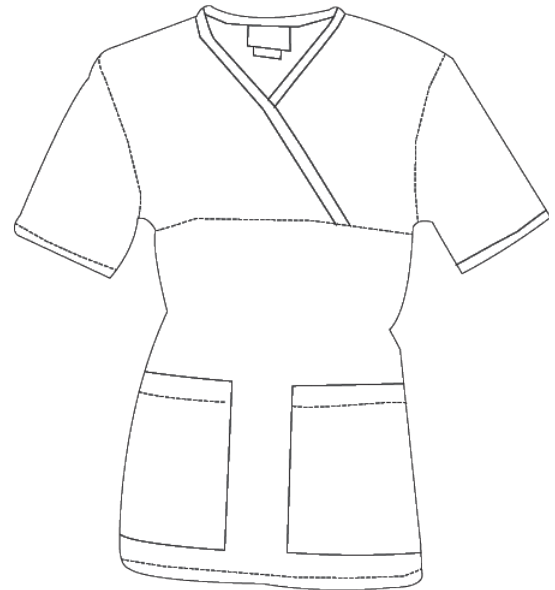
# 9506 Ladies Mock Wrap Scrub Top

Fabric: Brushed 65/35 PC Poplin

Available Sizes: XS - 3X\*

Fabric Weight: 4.5 oz.\*\*

- Front yoke
- Two lower pockets
- Side vents



Flattering faux wrap provides a classic style for women.

### CORE COLORS:

Black, Royal Blue, Navy Blue



## The perfect canvas to tell your story.

Embroidery ❖ Heat Transfer ❖ Patches

# 235 Scrub Cap

65/35 PC Poplin

Drawstring cap

Unisex; one size fits all.

**Colors:** Black, Navy Blue



# 222C Three-Pocket Scrub Top

Fabric: Brushed 65/35 PC Poplin

Available Sizes: XS - 5X\*

Fabric Weight: 4.5 oz.\*\*

- One left chest pocket
- Two lower front pockets
- Side vents

CORE COLORS: Burnt Orange



## Licensed Collegiate Scrubs

Whether it's Horns, Horn Frogs, Lions, Tigers or Bears—we work with organizations to produce properly licensed collegiate scrubs and other medical accessories before they leave our warehouse—eliminating unnecessary extra steps and costs to create a finished ready-to-wear product.





SCRUB JACKET | Complete your ensemble with a jacket made from the same ultra-brushed fabric as our UltraSoft scrubline



Inner Pocket for tablet, phone, paperwork...a snack!

**CORE COLORS:** Black, White, Ceil Blue, Royal Blue, Wine, Navy Blue



**SECONDARY COLORS:** Carribean Blue, Khaki, Hunter Green, Grey



## 418C UltraSoft Scrub Jacket

Fabric: Brushed 65/35 PC Poplin

Available Sizes: XXS - 5X\*

Fabric Weight: 4.5 oz.

\*Limited selection also available in sizes 6X-8X, depending on color choice.



- Coordinating front snaps
- Matching ribbed cuffs
- Two lower pockets
- Inner tablet pocket

Embroidery, heat transfer and patches all enhance the look and help make it your own.



## 218C UltraSoft Snap-Front Scrub Tunic

Fabric: Brushed 65/35 PC Poplin

Available Sizes: XXS - 5X\*

Fabric Weight: 4.5 oz.\*\*

- Coordinating front snaps
- V-Neck cut
- Two lower pockets
- Unisex sizing



**CORE COLORS:** Black, Ceil Blue,  
Royal Blue, Wine, Navy Blue



**SECONDARY COLORS:** Carribean Blue,  
Khaki, Purple, Hunter Green, White, Teal



# UltraSoft Scrub Pants

When you want simplistic and classic fit, then look no further. Sturdy elastic waist, drawstring or a combination provides an easy fit with comfort and mobility. Ultra-brushed fabric feels nice to the touch, yet is durable to withstand repeated washing and maintain color.



## 300C

### UltraSoft Classic Elastic Scrub Pant

Fabric: Brushed 65/35 PC Poplin

Available Sizes: XXS - 5X\*

Fabric Weight: 4.5 oz.

- Elastic waist
- Two side pockets, one back pocket
- Unisex sizing

**CORE COLORS:** Black, Ceil Blue, Royal Blue, Wine, Navy Blue



**SECONDARY COLORS:** Carribbean Blue, Khaki, Purple, Hunter Green, White, Grey, Teal



## 306C

### UltraSoft Drawstring Scrub Pant

Fabric: Brushed 65/35 PC Poplin

Available Sizes: XXS - 5X\*

Fabric Weight: 4.5 oz.

- Drawstring waist
- Two side pockets
- One back pocket

**CORE COLORS:** Black, Ceil Blue, Royal Blue, Wine, Navy Blue



**SECONDARY COLORS:** Carribbean Blue, Khaki, Purple, Hunter Green, White, Grey, Teal, Burnt Orange, Red







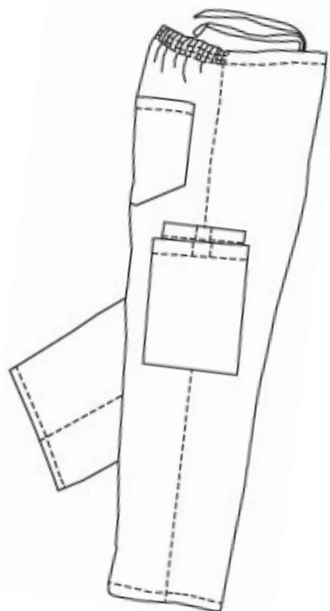
Multiple Pockets



Ultra-brushed cotton for soft as a feather fabric



Drawstring tie front & back elastic waist—the best of both worlds!



**P**

Available in shorter, petite length

**T**

Available in longer (tall) length

**#1**

Bestseller!

**313**

## UltraSoft Cargo Scrub Pant

Fabric: Brushed 65/35 PC Poplin

Available Sizes: XXS - 5X\*

Fabric Weight: 4.5 oz.

- Waist half drawstring/half elastic
- Two side pockets
- Three cargo pockets
- One back pocket
- Matching Velcro closures
- Unisex sizing

**CORE COLORS:** Black, Ceil Blue, Royal Blue, Wine, Navy Blue



**SECONDARY COLORS:** Carribean Blue, Purple, Hunter Green, Grey, Teal, Khaki, White



UltraSoft



## 220PL UltraSoft Unisex V-Neck Pocketless Scrub Top

65% Polyester/35% Ultra Brushed Cotton

Fabric Weight: 4.5 oz

Color: Navy ●

- Classic design
- Set-in sleeves
- V-Neck cut
- Pocketless/Tuckable or Worn loose
- Classic, relaxed fit
- Unisex sizing
- Easy care and upkeep

## 306PL UltraSoft Drawstring Pocketless Scrub Pant

65% Polyester/35% Ultra Brushed Cotton

Fabric Weight: 4.5 oz

Color: Navy ●

- No pockets
- Drawstring waist
- Classic, relaxed fit
- Unisex sizing
- Easy care and upkeep



# PC600

## Mechanic 2-Tone Workwear Shirt

- Fabric blend: 65%/35% Poly/Cotton
- Available Sizes: XS - 5X\*
- Fabric Weight: 5 oz.\*

**Colors:** Grey/Black, Hunter/Black, Purple/Black, Red/Black, Royal/Black, Yellow/Black





# UltraSMART

## A smart choice for lab coats



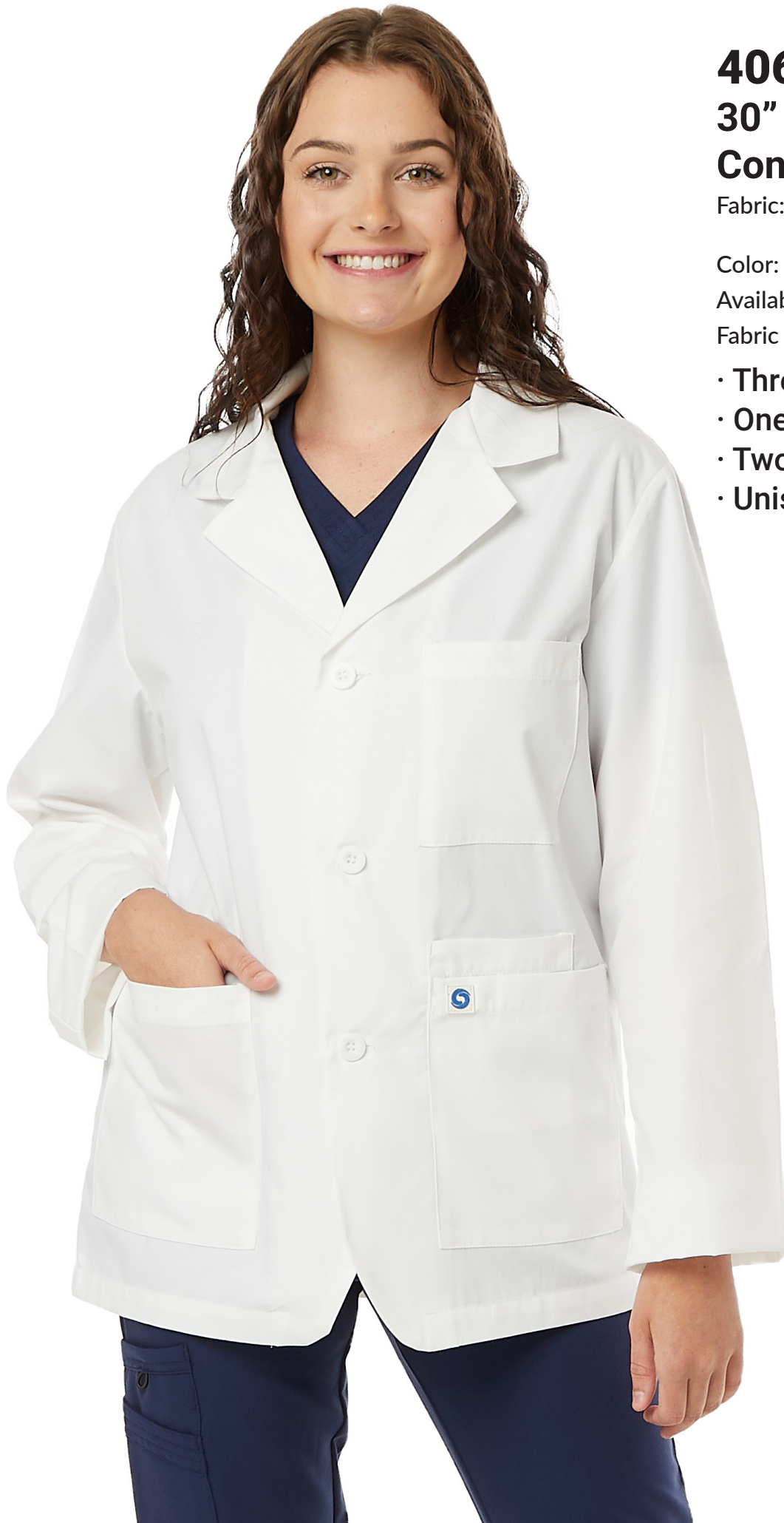
### Embrace Fresh.

Science and innovation combine to create SILVADUR technology, the intelligent antimicrobial that keeps textiles fresh and odor-free. SILVADUR's patented feature remains active on fabric wash after wash, ensuring longer effectiveness against undesirable bacteria.

## The long and short of it.

Lab Coats are worn today in many industries—from lab technicians and pharmacist, to spa personnel and veterinarians. For those in the medical profession, there are unwritten traditions regarding coat length. These traditions vary and are even considered archaic by some. Regardless, it helps to have an understanding of what these traditional lengths mean when selecting a style.

The short white coat length indicates completion of medical school.	Residents and non-attending Fellows wear a mid-length white coat.	Attendings & Fellows hit just above or at the knee.	Longer length for licensed physicians.
 <p>30"</p>	 <p>34"</p>	 <p>40"</p>	 <p>44"</p>



## 406A 30" Antimicrobial Consultation Coat

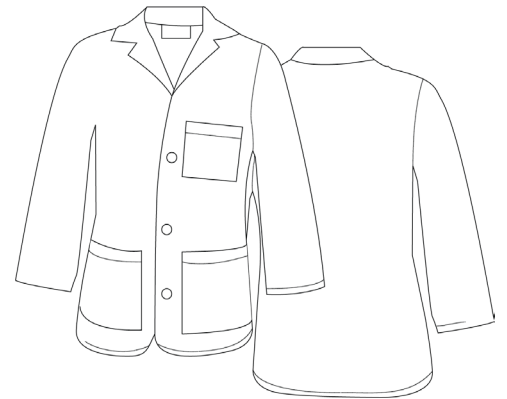
Fabric: Brushed 65/35 PC Poplin with antimicrobial finish

Color: White

Available Sizes: XXS - 3X

Fabric Weight: 5 oz.\*

- Three button front closure
- One chest pocket
- Two lower pockets
- Unisex



The Consultation Coat is styled in the traditional hip-length cut and is tailored to fit similar to a conventional jacket.

Available in classic white only, this coat is a perfect choice for the symbolic White Coat Ceremony for medical school grads.



Professional and classic, the 34" Unisex Lab Coat provides the perfect coverage for both men and women.



## 401A 34" Unisex Antimicrobial Lab Coat

Fabric: Brushed 65/35 PC Poplin  
with antimicrobial finish

Color: White

Available Sizes: XXS - 8X\*

Fabric Weight: 5 oz.\*

- Four button front closure
- One chest pocket
- Three lower pockets
- Two button, swing back belt
- Side access vents



Side vents on both sides make for easy access to inner pant pockets—a high-demand, hard to find feature. Four front pockets provide ample space for pens, tools and phones.

# 410A

## 34" Ladies

### Antimicrobial Lab Coat

Fabric: Brushed 65/35 PC Poplin with antimicrobial finish

Color: White

Available Sizes: XS - 3X

Fabric Weight: 5 oz.\*

- Four button front closure
- One chest pocket
- Three lower pockets
- Two button, swing back belt
- Shoulder darts

Flattering shoulder darts create a feminine fit for our ladies version of the 34" Lab Coat.



Lower left pocket has an added inner "bonus pocket" that nicely fits pens and most popular cell phones.

The 40" lab coat should fall just above or at the knee. Traditionally worn by Attendees and Fellows in the Medical Field, this length is also a good choice for those needing to offer greater protection from spillage on under clothes and skin.

Available in both Unisex and Ladies style cut for a choice in comfort and preference.



## 400A 40" Unisex Antimicrobial Lab Coat

Fabric: Brushed 65/35 PC Poplin with antimicrobial finish

Color: White

Available Sizes: XXS - 8X\*

Fabric Weight: 5 oz.\*

- Five button front closure
- One chest pocket
- Three lower pockets
- Two button, swing back belt



## 411A 40" Ladies Antimicrobial Lab Coat

Fabric: Brushed 65/35 PC Poplin with antimicrobial finish

Color: White

Available Sizes: XS - 3X

Fabric Weight: 5 oz.\*

- Five button front closure
- One chest pocket
- Three lower pockets
- Two button, swing back belt
- Shoulder darts





Spectrum took comfort a step further with the twill antimicrobial lab coats.

Made with a heavier, 7 oz.. 65/35 poly cotton twill fabric, these styles add a whole new level of professionalism to Spectrum's UltraSmart line of lab coats.



## 421A 40" Twill Antimicrobial Lab Coat

Fabric: 65/35 PC Twill

Color: White

Available Sizes: 28-56

Fabric Weight: 7 oz.\*

- Five button front closure
- One chest pocket
- Two lower pockets
- Two button, swing back belt



## 405A 44" Twill Antimicrobial Lab Coat

Fabric: 65/35 PC Twill

Color: White

Available Sizes: 28-56

Fabric Weight: 7 oz.\*

- Five button front closure
- One chest pocket
- Two lower pockets
- Set-in back belt
- Inside tablet pocket
- Unisex



Our longest lab coat also comes with a handy inner pocket for tablets and other essentials.

# SM342

## Reusable Isolation Gowns

### FEATURES:

- Size: 46" x 60" - One Size Fits Most
- Color: Yellow
- Twill tape neckline
- Tie closure on back, neck and waist
- Long sleeves; approx 22" in length
- Natural polyester knit cuffs
- Industrials laundry aatcc 61-4a standard
- Individually poly-bagged
- FDA certified Class

**Material:** 3 ounce CVC Broadcloth Fabric  
(55% cotton / 45% polyester)



# SM340

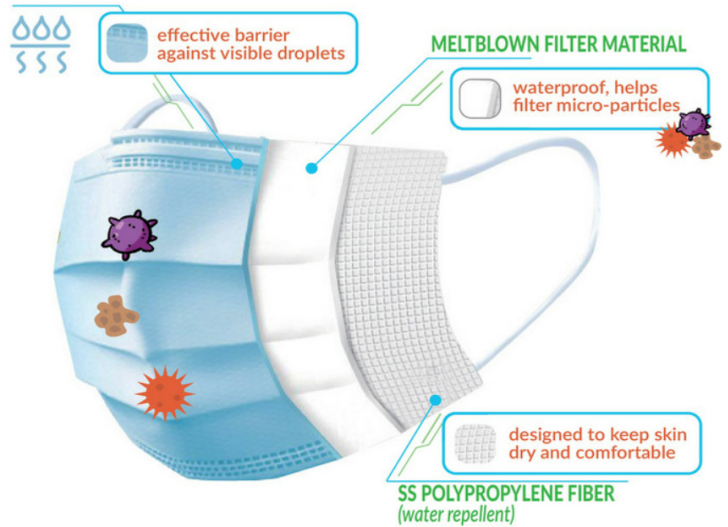
## Disposable Isolation Gowns

### FEATURES:

- One Size Fits Most
- Color: Blue
- Long Sleeves
- Woven cuffs
- Fluid Resistant
- Individually poly bagged
- FDA certified Class

### Material:

Polypropylene P (40gsm) with  
Polyethylene cover



## SM366 Disposable 3-poly Mask w/ear Loop

### FEATURES:

- First ply Polypropylene Fiber (water repellent)
- Second ply Meltblown filter(waterproof, filters micro-particles)
- Third ply Polypropylene Fiber (water repellent)
- FDA registered - Class 1
- Latex Free



## SM114 Anti-Fog Safety Glasses

Provides 99.99% UV protection with anti-glare and an integrated nose pad. Side-shields provide added protection and vented temples provide anti-fog.

Colors: Clear



## SM112 Safety Glasses

- Durable front and side protection
- Adjustable at temples

Colors: Black ●



# Stethoscopes that won't miss a beat

## Cardiology Stethoscope Style SM104

Colors: Black, Royal Blue, Red, Pink, Navy Blue



- Surgical stainless steel
- Chest piece and binaural
- Latex-free tubing
- Dual-sided head
- Non-chill rims
- Superior sound
- Internal spring
- Quality diaphragm
- Split chamber tubing
- Boxed with spare earpieces




## Accessories & More

Scope Name Tag  
**SM108**

Color: Black 



Heart Stethoscope  
Name Tag  
**KT-GF04**

Color: Red 




Disposable  
Stethoscope  
**SM100K**

Colors Yellow 



Stethoscope  
Holder  
**KT-GF02B**

Color: Blue 





Accessory pouch includes:

- 3 plastic bell chestpieces (adult, medium, infant)
- 2 additional spare eartips
- Spare adult and pediatric diaphragm
- Chestpiece key

## Dual Head Stethoscope Style SM100

Colors: Black, Royal Blue, Hunter Green



- Aluminum chest piece
- Superior sound
- Chrome-plated binaural
- Adjustable binaural
- Latex-free tubing
- Quality diaphragm
- Dual-sided head

## Sprague Stethoscope Style SM102

Colors: Black, Royal Blue



- Zinc alloy chestpiece
- Enhanced acoustic separation
- Dual PVC tubing
- High quality rolled steel connecting spring
- Latex-free 22" tubing
- Quality diaphragm
- 5 interchangeable chestpieces
- Overall length 30"
- Non-chill rims

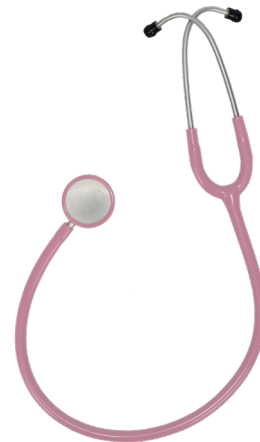


## Classic Stethoscope Style SM103

Colors: Black, Royal Blue, Pink, Navy Blue, Caribbean Blue



- Surgical stainless steel
- Non-chill rims
- Chest piece and binaural
- Superior sound
- Latex-free tubing
- Internal spring
- Dual-sided head
- Quality diaphragm



## Lightweight Stethoscope Style SM202

Colors: Pink, Purple, Hunter Green



- Aluminum chest piece and binaural
- Non-chill rims
- Latex-free tubing
- Superior sound
- Dual-sided head
- Internal spring
- Quality diaphragm

# Shear Madness!



## EMT Shears SM107

**Colors:** Black, Royal Blue, Red, Yellow



- 7.5" length
- Stainless steel blades
- Milled serrations
- Dual-sided shearing
- 90° stabilizing tip



## Packaged EMT Shears SM107B

**Colors:** Black, Royal Blue, Red, Yellow



Same as SM107, but in blister packaging suitable for POS display.



### High Quality

Stainless steel blades

### High Impact

Ergonomically designed handles

### Easily Customizable

Pad Printing, UV Printing, or Engraving—we'll help you choose the best option for your selection.



## Fluoride EMT Shears SM107F

Colors: Black ●

- 7.5" length
- Fluoride coated blades
- High quality, sharp stainless steel
- High-impact plastic handles
- Autoclavable up to 143°C/290°F
- Individually boxed packaging



## Utility Scissors SM107S

Colors: Black, Royal Blue



- 5.5" length
- Stainless steel blades
- Trauma shear
- Soft goods cutting



## Bandage Scissors SM118

Colors: Silver ●

- 5.5" length
- Surgical grade stainless steel
- Angled ergonomic form
- Soft goods cutting



## Hemostat Scissors SM119

Colors: Silver ●

- 5.5" length
- All stainless steel
- Soft goods cutting



# Diagnostic Instruments

Quality instruments available blank or ready to be branded for your organization or special event.

## SM109

**Blood Pressure Aneroid w/ Adult Cuff (Sphygmomanometer)**

Colors: Black, Royal Blue ● ●

- 0 - 300 mmHg Manometer
- Gauge accuracy  $\pm 3$  mmHg
- Nylon cuff range 10" to 16"
- Durable inflation bladder and bulb
- Chrome-plated gauge meter
- One year calibration warranty
- Vinyl bag
- Boxed packaging
- Enclosed printed instructions



Black zippered carrying case and nylon cuff can be personalized with heat transfer.



## SM361B

**Digital Blood Pressure Monitor**

- Clinically accurate readings
- Blue backlit display
- Fully automatic inflation and deflation
- Systolic, diastolic and pulse results
- 2-person memory bank holds 500-readings, 250 per user
- Memory recall with date/time stamp
- Average of last 3 readings
- Hypertension Indicator
- Irregular Heartbeat Detection
- Automatic shut-off



Includes: Monitor, adult nylon arm cuff, storage case, four AAA batteries, detailed English/Spanish instructions, quick start guide, FAQ pamphlet and blood pressure charting log





Select one of three available medical kits, or contact us to create a custom kit stocked with the essentials needed for a special program.



### SH100

#### Medical Kit 6-Piece

A medical kit including:

- SM109 (black or royal blue)
- SM103
- SM107S
- SM106B
- Carrying case
- Measuring tape



### SH200

#### Medical Kit 3-Piece

A medical kit including:

- SM103
- SM109 (black or royal blue)
- Carrying case



### SH300

#### Medical Kit 3-Piece - Basic

A medical kit including:

- SM100
- SM109 (black or royal blue)
- Carrying case



**SM358**  
**IR Non-Touch Thermometer**

Fast one-second reading suitable for adults and children. Offers 3 modes of reading for body, room and surface.

Colors: White ○



**SM359**  
**Finger Pulse Oximeter**

- Silicone padding
- Two AA batteries
- Strong slip resistant clip

Colors: Black ●



**SM355**  
**Digital Thermometer**

- Time 60±10 oral
- Beeper function
- Accuracy  $\pm 0.1^{\circ}\text{C}/\pm 0.2^{\circ}\text{F}$



### SM106B

#### Diagnostic Pen Light

Brightly illuminates the eyes, ears, and throat

- 5" long
- White Illumination



### SM106P

#### Disposable Penlight with Pupil Gauge

- 4.5" length
- Halogen bulb
- Yellow light illumination
- Disposable
- Pupil gauge imprint on the side
- Side clip activated
- Bagged separately



### SM106A

#### Diagnostic Pen Light

Effectively illuminates a patient's eyes, ears, throat, and measures pupil size and response time.

- 4.5" long
- Yellow Illumination
- Pupil gauge imprint on the side



### SM111B

#### Neurological Buck Hammer

Versatile dual mallet hammer with chrome plating and an 8.75" handle with a pin on the bottom to elicit cutaneous reflexes.

Colors: Black, Royal Blue, Red, Silver



### SM111T

#### Taylor Percussion Hammer

7.5" weighted chrome plated zinc alloy handle is precisely balanced for increased percussive force control. Head suited for provoking myotatic responses while the handle is designed for cutaneous and plantar reflexes.

Colors: Black, Royal Blue, Teal



## SH400

### CPR Pocket Resuscitator

Designed for mouth to mask ventilation. The cushioned mask has an elastic strap to secure comfortably and quickly. Latex free.

• 4.5"W x 6"H x 2"L • One way valve with filter

Colors: Red ●



## KT-SF04

### CPR Face Mask Keychain

CPR keychain face mask enables you to be prepared for any emergency situation. The face shield offers critical protection to both first responders and victims alike and provides illustrated instructions for the user.

Keychain Pouch: • 3" x 1.75" x 1.25"

Face mask: 7.5" x 7.2" x .75"

Colors: Royal Blue ●



## SM373

### Retractable 60" Measuring Tape

A must have in the healthcare field for circumferential measurements and documenting wound size. Displays in CM and Inches. Locks for easy reading.

• 2" round • Extends to 60"

Colors: White ○



## SM122

### Graduation Lamp

This traditional ceramic base graduation lamp measures 7 x 3 x 8.5 inches and includes a battery operated candle. Individually boxed, the lamp is available blank or can be decorated to commemorate a school or program.

Colors: White ○



# Keeping it together.



### Benefits in healthcare facilities

- Reduced risk of falls
- Loss prevention
- Patient convenience
- Branding opportunities



## SB-02

### Medical Multi-Pocket Caddy

- 12.75"W x 9"H x .125"D
- Easy to use back clips
- 3 front pockets, back clear pocket, inside pocket

**Colors:** Black, Royal Blue



## SB-03

### Medical Multi-Pocket Caddy - Small

- 13"W x 10"H flat
- 2 side hook loop closures
- 3 front pockets, back clear pocket

**Colors:** Royal Blue



Perfect for hospital beds, wheelchairs, strollers, lockers and more, these multipurpose bags provide easy storage options for a variety of uses. Easily secured with either buckle clips or velcro, these pocket carriers are ideal for both long-term personal use or short-term multi-user convenience.

Made of 100% polypropylene, fabric can be spot cleaned with soapy water and is earth friendly and recyclable.



### SM113

#### Nurse Pocket Organizer

- 5"W x 6.75"H x .5"L
- Back clip
- Snap/velcro closures
- 3 slide-in pockets

Colors: White, Navy Blue



### SM352

#### EMT Belt Organizer

- 3.25"W x 7.25"H x .25"L
- Belt loop attachment
- Snap/velcro closures
- 2 slide-in pockets

Colors: Black ●

### SM305L

#### Large Medical Nylon Carrying Case

- Bag Size: 10"w X 6"h" X 4d"
- Made with 70 Denier

Colors: Black, Royal



### SM305

#### Medical Nylon Carrying Case

- 9"L x 6.5"H x 2.25"W
- Velcro side pouch
- Side pouch measures 6" x 3.75"

Colors: Black ●



### SB106

#### Neck Wallet

- 5"W x 5.5"H x .25"L
- 2 zipper pouches
- 1 clear slide-in pocket

Colors: Black, Navy Blue, Red





**SB105**

**Nylon Wrist Pouch**

- 10"W x 3"H
- Nylon front
- Velcro snap for adjustable usage

**Colors:** Black, Navy Blue, Red



**SB107**

**Nylon Shoe Wallet**

- 2.75"W x 3.5"H
- Nylon
- Velcro loop attachment

**Colors:** Black, Navy Blue, Red



**SM343**

**Badge Reel with Alligator Clip**

- 7.5" weighted
- Alligator clip
- Swivel clip
- 1.25"W x 1.25"H
- Extends to 30" in length

**Colors:** Red, Purple, Maroon



# It's all in the bag!



## SM372 Messenger Bag

- 16"W x 12.5"H x 3.5"L
- 2 main compartments
- Front multi-pocket organizer
- Adjustable strap and buckles

Colors: Black ●



## SM353 Oxford Two Color Duffel Bag

- 21"W x 11"H x 9"L
- Outside zipper pocket
- Colored stripe on either side
- Adjustable strap

Colors: Royal Blue/Black ●





## SB100

### Multi-Functional Travel Tote Bag

- 14.25"W x 16"H x 4"L
- Outside slide-in pocket
- Inner zipper pocket

**Colors:** Royal Blue, Red



## SM374

### 2-in-1 Picnic Bag

- 20"W x 16.5"H x .5"L
- 2 outside pockets
- Side zippers for expanding
- Waterproof

**Colors:** Navy Blue ●



## SB111

### Classic Backpack with Key Holder and Bottle Holder

- 600D Heavy Duty Polyester
- 40 pieces per carton
- Size : 12.5" L x 16.5" H x 5" W
- Weight : 0.6 lb each
- Individual Bagged

**Colors:** Black, Red, Lime, Royal, Navy, Purple



## SB115

### Cooler Bag

- One main zipper compartment
- One front zipper pocket
- One mesh pocket inside
- 4mm EPE foam with Aluminum foil inside

**Colors:** Black, Grey

## SB117

### Cooler Bag

- One main zipper compartment
- Two front zipper pocket
- 4mm EPE foam with PEVA inside

**Colors:** Black, Grey





## SB118 Cooler Bag

- One main zipper compartment
- One front zipper pocket
- One mesh pocket inside
- 4mm EPE foam with Aluminum foil inside

Colors: Black, Grey



## SB119 Double layer cooler bag

- One main zipper compartment
- One front zipper pocket
- One mesh pocket inside
- 4mm EPE foam with Aluminum foil inside

Colors: Black, Grey

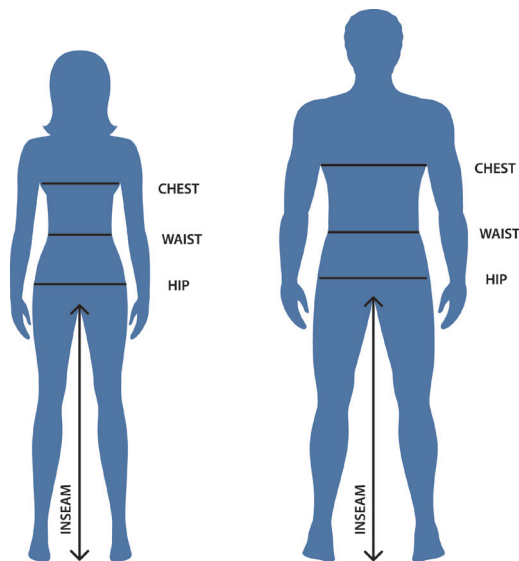


# Don't know your size?



Finding out exactly what size is right is simple with our convenient size charts.

## How to measure



### Chest

Measure around the fullest part of the chest, keeping tape parallel to the floor

### Waist

Bend to side and measure where body curves (even if you wear your pants lower).

### Hips

With feet shoulder-width apart, measure fullest part of hip/thigh area

### Inseam

Measure from the top of inner leg along the inside to the bottom of your leg. You can also measure a pair of pants that fit you well.

### WHAT YOU WILL NEED

- Standard tape measure
- Fitted undergarments
- Someone to assist

### TIPS & TRICKS

- Keep tape taut, not tight
- Measure loosely for wearing ease
- Measure twice for accuracy

*Need a specific custom size or change to a garment? Just ask!*

**We have an in-house custom sewing team that can help with any changes to the standard sizes that you need.**

## UltraSoft Sizing Chart

Use this charts below to determine your size. If one of the measurements is in between two sizes, order the smaller size for a tighter fit or the larger size for a looser fit. If your measurements for waist and hips correspond to two different suggested sizes, order the one indicated by your hip measurement.



### Tops

#### Unisex

SIZE	XXS	XS	S	M	L	XL	2X	3X	4X	5X	6X	7X	8X
CHEST	31-33	34-36	37-39	40-44	45-47	48-50	51-53	54-56	57-59	60-63	64-67	68-70	71-73

#### Women

SIZE	XXS	XS	S	M	L	XL	2X	3X	4X	5X	6X	7X	8X
BUST	34-36	37-39	40-42	43-44	45-46	47-48	49-50	51-53	54-56	57-59	60-63	64-66	67-70

### Pants

#### Unisex

SIZE	XXS	XS	S	M	L	XL	2X	3X	4X	5X	6X	7X	8X
WAIST	23-26	27-28	29-31	32-34	35-37	38-40	41-43	44-45	46-48	49-50	51-55	56-57	58-61
HIP	32-34	35-38	39-40	41-43	44-47	48-50	51-55	56-58	59-62	63-68	69-76	77-88	89-96
REGULAR INSEAM	30-31	30-31	30-31	31-32	31-32	31-32	32-33	32-33	32-33	32-34	32-34	33-34	33-34
PETITE INSEAM	28	28	29	29	29	29	29	30	30	30			
TALL INSEAM	34	34	34	35	36	36	36	37	37	37			



### Ladies Top - Style 625

SIZE	XXS	XS	S	M	L	XL	2X	3X	4X
BUST	28-33	34-36	37-39	40-41	42-43	44-46	47-49	50-53	54-58

### Mens Top - Style 620

SIZE	XS	S	M	L	XL	2X	3X	4X
CHEST	34-37	38-39	40-41	42-44	45-46	47-49	50-51	52-54

### Ladies Pant - Style 635

SIZE	XXS	XS	S	M	L	XL	2X	3X	4X
WAIST	23-24	25-26	27-28	29-31	32-35	36-39	40-43	44-48	49-50
HIP	30-33	34-37	37-41	42-45	46-47	48-49	50-53	54-57	58-61
INSEAM	29	29	29	29	29	29.5	30	30	30

### Mens Pant - Style 630

SIZE	XS	S	M	L	XL	2X	3X	4X
WAIST	27-28	29-30	31-33	34-36	37-39	40-42	43-45	46-48
HIP	34-37	38-40	41-44	45-48	49-51	52-55	56-58	59-61
INSEAM	30.5	30.75	31	31.25	31.5	31.75	31.75	31.75

### Ladies Jogger Pant - Style 636

SIZE	XXS	XS	S	M	L	XL	2X	3X	4X
WAIST	23-25	26-27	27-28	30-32	33-36	37-39	40-43	44-47	48-51
HIP	30-33	34-37	38-40	41-44	42-47	48-49	50-53	54-57	58-64
INSEAM	29	29	29	29	29	29.5	30	30	30

### Mens Jogger Pant - Style 631

SIZE	XS	S	M	L	XL	2X	3X	4X
WAIST	24-26	27-28	29-32	33-35	36-38	39-41	42-45	46-48
HIP	34-37	38-40	41-44	45-48	49-51	52-55	56-58	59-61
INSEAM	30.5	30.75	31	31.25	31.5	31.75	31.75	31.75



### WYND Sizing Chart

With a generous amount of 6% Spandex, WYND Scrubs are designed to not only provide generous flexibility in fabric, but also flexibility in fit. The sizing chart below is suggested to align with a more fitted, athletic-yoga style of apparel. For scrub wearers who prefer a more traditional, relaxed scrub fit, we recommend selecting the next size up.

### Ladies Top - Style 825

SIZE	XXS	XS	S	M	L	XL	2X	3X	4X
BUST	28-29	30-31	32-34	35-38	39-42	43-46	47-51	52-56	57-58

### Mens Top - Style 820

SIZE	XS	S	M	L	XL	2X	3X	4X
CHEST	32-34	35-38	39-42	43-46	47-50	51-54	55-56	57-58

### Ladies Top - Style 826

SIZE	XXS	XS	S	M	L	XL
BUST	28-29	30-31	32-34	35-38	39-42	43-46

### Mens Top - Style 821

SIZE	XS	S	M	L	XL
CHEST	32-34	35-38	39-42	43-46	47-50

### Ladies Pant - Style 835

SIZE	XXS	XS	S	M	L	XL	2X	3X	4X
WAIST	23-24	25-26	27-28	29-31	32-35	36-39	40-43	44-48	49-50
INSEAM	30.5	30.5	30.5	30.5	31	31	31.5	31.5	31.5

### Mens Pant - Style 830

SIZE	XS	S	M	L	XL	2X	3X	4X
WAIST	27-28	29-30	31-33	34-36	37-39	40-42	43-45	46-48
INSEAM	29.5	29.5	30	30	30	30.5	30.5	30.5

### UltraSmart Lab Coat Sizing Chart

Unisex - Styles 400A, 401A, 406A

SIZE	XXS	XS	S	M	L	XL	2X	3X	4X	5X	6X	7X	8X
CHEST	30-33	34-37	38-40	41-43	44-47	48-52	53-55	56-58	59-62	63-66	67-71	72-76	77-82

Womens - Style 410A and 411A

SIZE	XXS	XS	S	M	L	XL	2X	3X	4X	5X	6X	7X	8X
BUST	31-33	34-37	38-40	41-45	46-48	49-54	55-57	58-60	61-64	65-68	69-71	72-75	76-81

Styles 405A, 421A

28-30	32-34	36-38	40-42	44-46	48-50	52-54	56-58	60-62	64-66	68-70	72-74
XS	S	M	L	XL	2X	3X	4X	5X	6X	7X	8X





SPECTRUM

[spectrumuniforms.com](http://spectrumuniforms.com)

ASI 88680 ● SAGE 67803

PPAI 232515 ● UPIC SPECT 177 ● DC 229440