

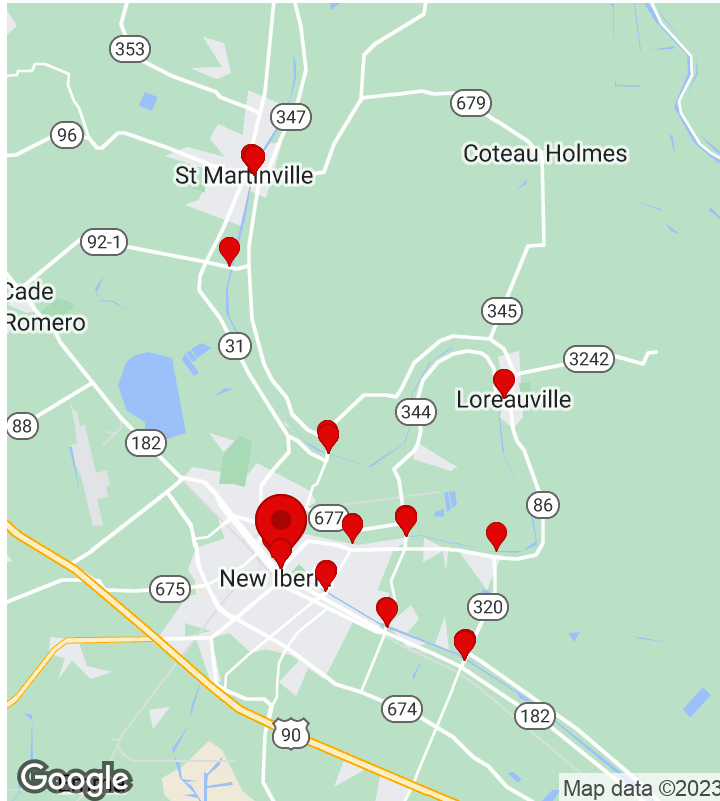
Louisiana Data Collection - Final



Investigation of data points along the Atchalafalya River, Bayou Boeuf, Bayou Lafourche, Bayou Teche and Mississippi River.

June 3, 2022

7/15/2023, 4:20:44 PM UTC



CREATED

🕒 6/3/2022, 1:23:28 PM UTC

👤 by Monique Rydel

UPDATED

🕒 7/15/2023, 4:20:44 PM UTC

👤 by Monique Rydel

LOCATION

📍 30.006381, -91.816770

General Report Information

Date	June 3, 2022
River/Body of Water	Bayou Teche
Personnel	Seth Jones, Monique Rydel, Susan Pulliam
Start Time	08:23
End Time	19:42
Travel Method	Boat

Weather Information

Air Temperature (f)	87
Wind Speed (mph)	15
Tides or Currents, if applicable.	

Site Locations (30 Items)

Site Locations - 1. Bayou Teche - BT, 1.1

Way Point Prefix	Bayou Teche - BT
Way Point Number	1.1
Time	08:30
Way Point Description	Exposed cable with lead.
Is there buried or visible cable at location?	Yes
Are there visible signs indicating a cable crossing?	No
Is the cable(s) Terrestrial, Submarine or Both?	Both
Is lead visible?	Yes
How many cables are visible?	3

Specific Cable Information (3 Items)

Specific Cable Information - 1. 1

Cable #	1
Visible Length (ft)	5" exposed lead

Type of Cable (Power, Telecom, Fiber Optic, Other)	Telecom
--	---------

Was there a sample collected?	Yes
-------------------------------	-----

How many samples collected?	4
-----------------------------	---

Specific Sample Information (3 Items)

Specific Sample Information - 1. Sediment

Type of Sample (Water, Sediment, Cable, Other)	Sediment
--	----------

If more than one cable, what Cable was Sample collected from?	1 Telecom
---	-----------

Location of Collected Sample	Base of cable
------------------------------	---------------

Time of Collection	08:35
--------------------	-------

Sample ID	BT 1.1 Sediment
-----------	-----------------

Specific Sample Information - 2. Cable

Type of Sample (Water, Sediment, Cable, Other)	Cable
--	-------

If more than one cable, what Cable was Sample collected from?	1
---	---

Location of Collected Sample	Lead sample
------------------------------	-------------

Time of Collection	08:40
--------------------	-------

Sample ID	BT 1.1 Lead/Cable
-----------	-------------------

Specific Sample Information - 3. Water

Type of Sample (Water, Sediment, Cable, Other)	Water
--	-------

If more than one cable, what Cable was Sample collected from?	1
---	---

Location of Collected Sample	Above suspected cable location. Midwater. 1.5 ft deep.
------------------------------	--

Time of Collection	08:50
--------------------	-------

Sample ID	BT 1.1 Water #1 and #2. Duplicate Collected.
-----------	--

Specific Cable Information - 2. 2

Cable #	2
---------	---

Visible Length (ft)	15"
---------------------	-----

Type of Cable (Power, Telecom, Fiber Optic, Other)	Unknown, Early fiber optic?
Was there a sample collected?	Yes
How many samples collected?	1

Specific Sample Information (1 Item)

Specific Sample Information - 1. Leaded tin

Type of Sample (Water, Sediment, Cable, Other)	Leaded tin
If more than one cable, what Cable was Sample collected from?	2
Location of Collected Sample	End of exposed covering
Time of Collection	08:43
Sample ID	BT 1.1 Cable 2

Specific Cable Information - 3. 3

Cable #	3
Visible Length (ft)	4
Type of Cable (Power, Telecom, Fiber Optic, Other)	Early telecom
Was there a sample collected?	Yes
How many samples collected?	1

Specific Sample Information (1 Item)

Specific Sample Information - 1. Cable

Type of Sample (Water, Sediment, Cable, Other)	Cable
If more than one cable, what Cable was Sample collected from?	3
Location of Collected Sample	Cable
Time of Collection	08:45
Sample ID	BT 1.1 Cable 3

Site Photos





Site Locations - 2. Bayou Teche - BT, 2.1

Way Point Prefix	Bayou Teche - BT
Way Point Number	2.1
Time	09:00
Way Point Description	Power cables
Is there buried or visible cable at location?	Yes
Are there visible signs indicating a cable crossing?	No
Is the cable(s) Terrestrial, Submarine or Both?	Both
Is lead visible?	No
How many cables are visible?	4

Specific Cable Information (2 Items)

Specific Cable Information - 1. 2, 1

Cable #	2, 1
Visible Length (ft)	5
Type of Cable (Power, Telecom, Fiber Optic, Other)	Power, New
Was there a sample collected?	No

Specific Sample Information

Specific Cable Information - 2. 4, 3

Cable #	4, 3
Visible Length (ft)	4
Type of Cable (Power, Telecom, Fiber Optic, Other)	Ground
Was there a sample collected?	No

Specific Sample Information

Site Photos



Site Locations - 3. Bayou Teche - BT, 3.1

Way Point Prefix	Bayou Teche - BT
Way Point Number	3.1
Time	09:04
Way Point Description	Other side of power lines.
Is there buried or visible cable at location?	Yes
Are there visible signs indicating a cable crossing?	No
Is the cable(s) Terrestrial, Submarine or Both?	Both
Is lead visible?	No
How many cables are visible?	4

Specific Cable Information (1 Item)

Specific Cable Information - 1. 1, 2, 3, 4

Cable #	1, 2, 3, 4
Visible Length (ft)	5
Type of Cable (Power, Telecom, Fiber Optic, Other)	Power, New
Was there a sample collected?	No

Specific Sample Information

Site Photos



Site Locations - 4. Bayou Teche - BT, 4.1

Way Point Prefix	Bayou Teche - BT
Way Point Number	4.1
Time	09:06
Way Point Description	Other side of telecom cable
Is there buried or visible cable at location?	No
Are there visible signs indicating a cable crossing?	No

Site Photos



Site Locations - 5. Bayou Teche - BT, 5.1

Way Point Prefix	Bayou Teche - BT
Way Point Number	5.1
Time	09:21
Way Point Description	No leaded cables visible
Is there buried or visible cable at location?	No
Are there visible signs indicating a cable crossing?	No

Site Photos



Site Locations - 6. Bayou Teche - BT, 6.1

Way Point Prefix	Bayou Teche - BT
Way Point Number	6.1

Time	09:39
Way Point Description	Gas line crossing with old telephone pole.
Is there buried or visible cable at location?	No
Are there visible signs indicating a cable crossing?	Yes
Identify what the sign says.	Do not dredge or anchor gas pipeline crossing.

Site Photos



Site Locations - 7. Bayou Teche - BT, 6.2

Way Point Prefix	Bayou Teche - BT
Way Point Number	6.2
Time	09:40
Way Point Description	Other side. With gas line sign and old telephone pole. Sign (corrugated plastic) is covering another metal sign. Unidentified.
Is there buried or visible cable at location?	No
Are there visible signs indicating a cable crossing?	Yes
Identify what the sign says.	Warning do not anchor or dredge gas pipeline crossing. Center point energy.

Site Photos



Site Locations - 8. Bayou Teche - BT, 7.1

Way Point Prefix	Bayou Teche - BT
Way Point Number	7.1
Time	09:55
Way Point Description	New power lines.
Is there buried or visible cable at location?	Yes
Are there visible signs indicating a cable crossing?	No
Is the cable(s) Terrestrial, Submarine or Both?	Both
Is lead visible?	No
How many cables are visible?	3

Specific Cable Information (1 Item)

Specific Cable Information - 1. 1, 2, 3

Cable #	1, 2, 3
Visible Length (ft)	Connected
Type of Cable (Power, Telecom, Fiber Optic, Other)	Power
Was there a sample collected?	No

Specific Sample Information

Site Photos



Site Locations - 9. Bayou Teche - BT, 8.1

Way Point Prefix	Bayou Teche - BT
Way Point Number	8.1
Time	09:59
Way Point Description	Bell south box.
Is there buried or visible cable at location?	Yes
Are there visible signs indicating a cable crossing?	No
Is the cable(s) Terrestrial, Submarine or Both?	Both
Is lead visible?	No
How many cables are visible?	1

Specific Cable Information (1 Item)

Specific Cable Information - 1. 1

Cable #	1
Visible Length (ft)	Connected
Type of Cable (Power, Telecom, Fiber Optic, Other)	Fiber Optic
Was there a sample collected?	No

Specific Sample Information

Site Photos



Site Locations - 10. Bayou Teche - BT, 9.1

Way Point Prefix	Bayou Teche - BT
Way Point Number	9.1
Time	10:03
Way Point Description	New power
Is there buried or visible cable at location?	No
Are there visible signs indicating a cable crossing?	No

Site Photos



Site Locations - 11. Bayou Teche - BT, 10.1

Way Point Prefix	Bayou Teche - BT
Way Point Number	10.1
Time	10:06
Way Point Description	Sign
Is there buried or visible cable at location?	No
Are there visible signs indicating a cable crossing?	Yes
Identify what the sign says.	Cable crossing

Site Photos



Site Locations - 12. Bayou Teche - BT, 11.1

Way Point Prefix	Bayou Teche - BT
Way Point Number	11.1
Time	10:23
Way Point Description	Sign
Is there buried or visible cable at location?	No
Are there visible signs indicating a cable crossing?	Yes
Identify what the sign says.	Cable Crossing

Site Photos



Site Locations - 13. Bayou Teche - BT, 12.1

Way Point Prefix	Bayou Teche - BT
Way Point Number	12.1
Time	10:38
Way Point Description	Sign
Is there buried or visible cable at location?	No
Are there visible signs indicating a cable crossing?	Yes
Identify what the sign says.	Warning. Do not anchor or dredge gas pipeline. Center point energy.

Site Photos



Site Locations - 14. Bayou Teche - BT, 13.1

Way Point Prefix	Bayou Teche - BT
Way Point Number	13.1
Time	10:59
Way Point Description	Sign
Is there buried or visible cable at location?	No
Are there visible signs indicating a cable crossing?	Yes
Identify what the sign says.	Center Point Energy. Gas Pipeline Crossing.

Site Photos



Site Locations - 15. Bayou Teche - BT, 14.1

Way Point Prefix	Bayou Teche - BT
Way Point Number	14.1
Time	11:22
Way Point Description	Negative Point, remnants of infrastructure but no visible cable.
Is there buried or visible cable at location?	No

Are there visible signs indicating a cable crossing? | No

Site Photos



Site Locations - 16. Bayou Teche - BT, 15.1

Way Point Prefix	Bayou Teche - BT
Way Point Number	15.1
Time	12:04
Way Point Description	Sign
Is there buried or visible cable at location?	Yes
Are there visible signs indicating a cable crossing?	Yes
Identify what the sign says.	Porcelain. Cable Crossing.
Is the cable(s) Terrestrial, Submarine or Both?	Submarine
Is lead visible?	No
How many cables are visible?	Not visible. Needed to select in order to have sampled data collected.

Specific Cable Information (1 Item)

Specific Cable Information - 1. 1, No visible cable

Cable #	1, No visible cable
Visible Length (ft)	0
Type of Cable (Power, Telecom, Fiber Optic, Other)	Telecom, Not Visible, needed in order to collect sample information.
Was there a sample collected?	Yes

How many samples collected? | 1

Specific Sample Information (1 Item)

Specific Sample Information - 1. Water

Type of Sample (Water, Sediment, Cable, Other)	Water
If more than one cable, what Cable was Sample collected from?	1
Location of Collected Sample	Midwater
Time of Collection	13:11
Sample ID	BT 15.1 Water #1 and #2. Duplicate Collected.

Site Photos

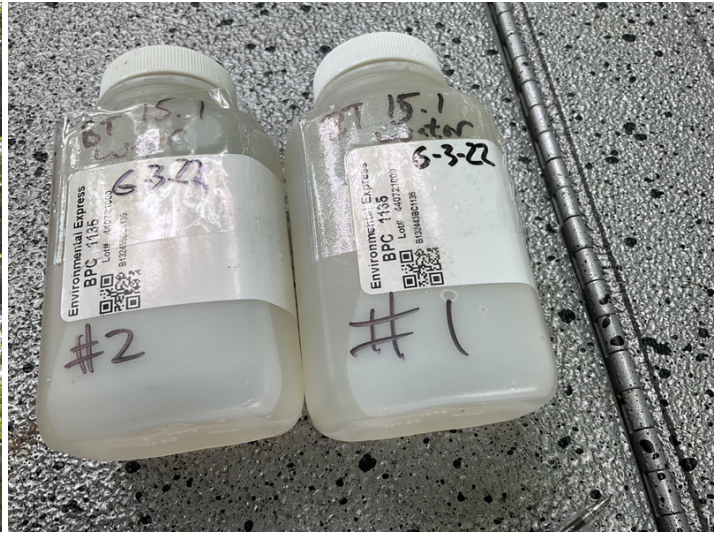




Site Locations - 17. Bayou Teche - BT, 15.2

Way Point Prefix	Bayou Teche - BT
Way Point Number	15.2
Time	12:16
Way Point Description	Heavy vegetation on both sides of bayou.
Is there buried or visible cable at location?	No
Are there visible signs indicating a cable crossing?	Yes
Identify what the sign says.	Porcelain. Cable Crossing.

Site Photos



Site Locations - 18. Bayou Teche - BT, 15.3

Way Point Prefix	Bayou Teche - BT
Way Point Number	15.3
Time	12:29
Way Point Description	Old telephone pole with new equipment and debris.
Is there buried or visible cable at location?	No
Are there visible signs indicating a cable crossing?	No

Site Photos



Site Locations - 19. Bayou Teche - BT, 16.1

Way Point Prefix	Bayou Teche - BT
Way Point Number	16.1
Time	14:22
Way Point Description	Opposite site of cable crossing. No visible sign.
Is there buried or visible cable at location?	No
Are there visible signs indicating a cable crossing?	No

Site Photos



Site Locations - 20. Bayou Teche - BT, 16.2

Way Point Prefix	Bayou Teche - BT
Way Point Number	16.2
Time	14:28
Way Point Description	New fiber optic cable.
Is there buried or visible cable at location?	Yes
Are there visible signs indicating a cable crossing?	No
Is the cable(s) Terrestrial, Submarine or Both?	Both
Is lead visible?	Yes
How many cables are visible?	1

Specific Cable Information (1 Item)

Specific Cable Information - 1. 1

Cable #	1
Visible Length (ft)	Connected
Type of Cable (Power, Telecom, Fiber Optic, Other)	Fiber Optic
Was there a sample collected?	No

Specific Sample Information

Site Photos



Site Locations - 21. Bayou Teche - BT, 16.3

Way Point Prefix	Bayou Teche - BT
Way Point Number	16.3
Time	14:35
Way Point Description	Visible Sign. Broken in water.
Is there buried or visible cable at location?	No
Are there visible signs indicating a cable crossing?	Yes
Identify what the sign says.	Porcelain. Cable Crossing.

Site Photos



Site Locations - 22. Bayou Teche - BT, 17.1

Way Point Prefix	Bayou Teche - BT
------------------	------------------

Way Point Number	17.1
Time	14:53
Way Point Description	Cable
Is there buried or visible cable at location?	Yes
Are there visible signs indicating a cable crossing?	No
Is the cable(s) Terrestrial, Submarine or Both?	Both
Is lead visible?	Yes
How many cables are visible?	3

Specific Cable Information (2 Items)

Specific Cable Information - 1. 1, 2, 3

Cable #	1, 2, 3
Visible Length (ft)	20'
Type of Cable (Power, Telecom, Fiber Optic, Other)	Unknown, Suspected 2 power, 1 telecom
Was there a sample collected?	Yes
How many samples collected?	5

Specific Sample Information (3 Items)

Specific Sample Information - 1. Water

Type of Sample (Water, Sediment, Cable, Other)	Water
If more than one cable, what Cable was Sample collected from?	1, 2, and 3. All cables are wrapped together.
Location of Collected Sample	On Cable
Time of Collection	15:08
Sample ID	BT 17.1 #1 and #2. Duplicate Collected.

Specific Sample Information - 2. Water

Type of Sample (Water, Sediment, Cable, Other)	Water
If more than one cable, what Cable was Sample collected from?	1, 2 and 3.
Location of Collected Sample	Midwater. 1' deep.

Time of Collection	15:13
Sample ID	BT 17.2 #1 and #2. Duplicate Collected.

Specific Sample Information - 3. Sediment

Type of Sample (Water, Sediment, Cable, Other)	Sediment
If more than one cable, what Cable was Sample collected from?	1,2, and 3.
Location of Collected Sample	On Cable
Time of Collection	15:18
Sample ID	BT 17.1 Sediment

Specific Cable Information - 2. 4

Cable #	4
Visible Length (ft)	15'
Type of Cable (Power, Telecom, Fiber Optic, Other)	Unknown
Was there a sample collected?	Yes
How many samples collected?	1

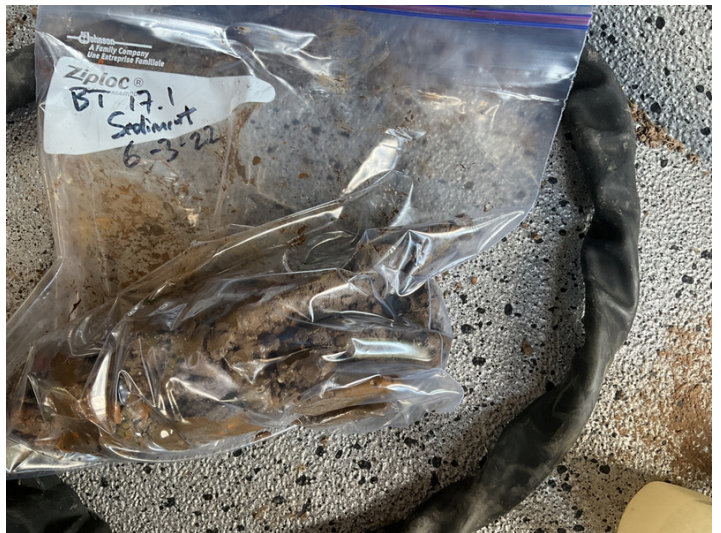
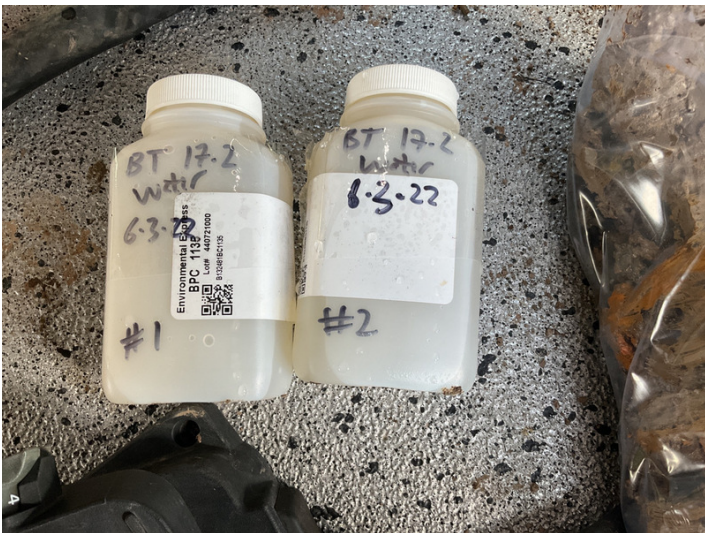
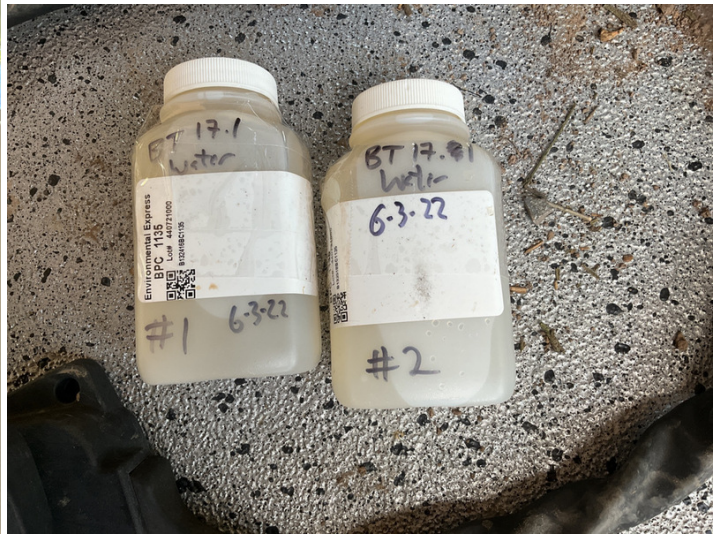
Specific Sample Information (1 Item)

Specific Sample Information - 1. Cable

Type of Sample (Water, Sediment, Cable, Other)	Cable
If more than one cable, what Cable was Sample collected from?	4. Small lead sheathed ground cable.
Location of Collected Sample	On Cable
Time of Collection	15:20
Sample ID	BT 17.4 Lead (BT 17.1, 17.2, and 17.4 samples are all under Location 17.1, for a total of 6 samples)

Site Photos







Site Locations - 23. Bayou Teche - BT, 18.1

Way Point Prefix	Bayou Teche - BT
Way Point Number	18.1
Time	15:31
Way Point Description	Small 1" Cable
Is there buried or visible cable at location?	Yes
Are there visible signs indicating a cable crossing?	No
Is the cable(s) Terrestrial, Submarine or Both?	Both
Is lead visible?	No
How many cables are visible?	1

Specific Cable Information (1 Item)

Specific Cable Information - 1. 1

Cable #	1
Visible Length (ft)	Connected to junction box.
Type of Cable (Power, Telecom, Fiber Optic, Other)	Telecom
Was there a sample collected?	No

Specific Sample Information

Site Photos



Site Locations - 24. Bayou Teche - BT, 19.1

Way Point Prefix	Bayou Teche - BT
Way Point Number	19.1
Time	15:42
Way Point Description	Power line coming out of junction box.
Is there buried or visible cable at location?	Yes
Are there visible signs indicating a cable crossing?	No
Is the cable(s) Terrestrial, Submarine or Both?	Both
Is lead visible?	Yes
How many cables are visible?	1

Specific Cable Information (1 Item)

Specific Cable Information - 1. 1

Cable #	1
Visible Length (ft)	Connected
Type of Cable (Power, Telecom, Fiber Optic, Other)	Power
Was there a sample collected?	No

Specific Sample Information

Site Photos



Site Locations - 25. Bayou Teche - BT, 20.1

Way Point Prefix	Bayou Teche - BT
Way Point Number	20.1
Time	15:59
Way Point Description	Petroleum pipeline.
Is there buried or visible cable at location?	No
Are there visible signs indicating a cable crossing?	Yes
Identify what the sign says.	LPG Warning Pipeline.

Site Photos



Site Locations - 26. Bayou Teche - BT, 21.1

Way Point Prefix	Bayou Teche - BT
Way Point Number	21.1
Time	16:02
Way Point Description	Small sign under bridge indicating cable.
Is there buried or visible cable at location?	No
Are there visible signs indicating a cable crossing?	Yes
Identify what the sign says.	DOTD Submarine Cable. Nelson Canal.

Site Photos



Site Locations - 27. Bayou Teche - BT, 22.1

Way Point Prefix	Bayou Teche - BT
Way Point Number	22.1
Time	17:11
Way Point Description	Draw Bridge. No signs. No telecom.
Is there buried or visible cable at location?	N/A
Are there visible signs indicating a cable crossing?	No

Site Photos



Site Locations - 28. Bayou Teche - BT, 23.1

Way Point Prefix	Bayou Teche - BT
Way Point Number	23.1

Time	17:29
Way Point Description	Sign posts. With bell tags. No sign remains.
Is there buried or visible cable at location?	No
Are there visible signs indicating a cable crossing?	No

Site Photos



Site Locations - 29. Bayou Teche - BT, 24.1

Way Point Prefix	Bayou Teche - BT
Way Point Number	24.1
Time	17:32
Way Point Description	Exposed lead splice box.
Is there buried or visible cable at location?	Yes
Are there visible signs indicating a cable crossing?	No
Is the cable(s) Terrestrial, Submarine or Both?	Both
Is lead visible?	Yes
How many cables are visible?	2

Specific Cable Information (2 Items)

Specific Cable Information - 1. 1

Cable #	1
Visible Length (ft)	2.5
Type of Cable (Power, Telecom, Fiber Optic, Other)	Telecom
Was there a sample collected?	Yes
How many samples collected?	1

Specific Sample Information (1 Item)

Specific Sample Information - 1. Lead splice box.

Type of Sample (Water, Sediment, Cable, Other)	Lead splice box.
If more than one cable, what Cable was Sample collected from?	Lead Splice Box
Location of Collected Sample	Lead Splice box.
Time of Collection	19:31
Sample ID	BT 24.1 Lead

Specific Cable Information - 2. 2

Cable #	2
Visible Length (ft)	12
Type of Cable (Power, Telecom, Fiber Optic, Other)	Telecom
Was there a sample collected?	No

Specific Sample Information

Site Photos







Site Locations - 30. Bayou Teche - BT, 25.1

Way Point Prefix	Bayou Teche - BT
Way Point Number	25.1
Time	19:23
Way Point Description	Old Telephone post. Unmarked.
Is there buried or visible cable at location?	Yes
Are there visible signs indicating a cable crossing?	No
Is the cable(s) Terrestrial, Submarine or Both?	N/A
Is lead visible?	N/A
How many cables are visible?	No Visible Cable. Had to Check Cable to make sample field available.

Specific Cable Information (1 Item)

Specific Cable Information - 1. na

Cable #	na
Visible Length (ft)	na
Type of Cable (Power, Telecom, Fiber Optic, Other)	This is a control sample for what would be a telecom cable.
Was there a sample collected?	Yes
How many samples collected?	1

Specific Sample Information (1 Item)

Specific Sample Information - 1. Water

Type of Sample (Water, Sediment, Cable, Other)	Water
If more than one cable, what Cable was Sample collected from?	No visible cable. Listed only to make sample selections available.
Location of Collected Sample	Control
Time of Collection	19:27
Sample ID	BT 25.1 #1 and #2. Duplicate collected.

Site Photos

