

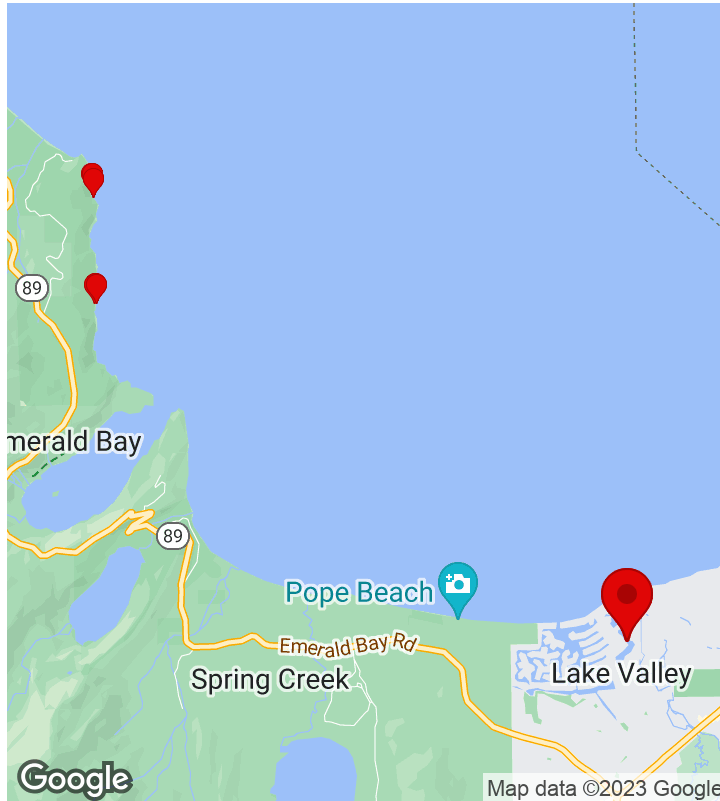
California Data Collection - Final



Investigation of data points along two specific cables that have been identified in Lake Tahoe and Emerald Bay.

March 30, 2023

7/9/2023, 5:13:19 PM UTC



CREATED

🕒 3/30/2023, 10:09:35 PM UTC

👤 by Monique Rydel

UPDATED

🕒 7/9/2023, 5:13:19 PM UTC

👤 by Monique Rydel

LOCATION

📍 38.934137, -120.002678

General Report Information

Start Date	March 30, 2023
River/Body of Water	Lake Tahoe
Personnel	Seth Jones, Monique Rydel
Start Time	15:09
Travel Method	Boat

Weather Information

Air Temperature (c)	-1.1
Wind Speed (mph)	13.6

Site Locations (3 Items)

Site Locations - 1. Lake Tahoe - LT, 1

Weather

Air Temperature (c)	3.3
Weather Condition	Overcast
Wind Speed (mph)	5.6
Humidity (%)	46
Precipitation (mm)	0

Details for Site

Way Point Prefix	Lake Tahoe - LT
Way Point Number	1
Time at Way Point	15:11
Way Point Description	Splice Box, Cable Location
Are there visible signs indicating a cable crossing?	No
Is there visible cable at location?	See Notes
Was there a general site sample collected?	Yes

General Sample (GS) Information (1 Item)

General Sample (GS) Information - 1. Sediment: Under Cable, 1

Type of Sample for GS	Sediment: Under Cable
Location of Collected Sample - GS	Under cable and splice box
Time of Collection - GS	15:11
Sample Prefix - GS	Lake Tahoe - LT
Sample ID (#) - GS	1
Additional Notes - GS (if any)	None.

Photo of GS Sample(s)

General Site Notes	Cable/Lead is visible. This is part of an approximately, seven mile cable connection for the main Tahoe Telecom line running from Baldwin Beach to 4 Ring Road.
--------------------	---

Site Photos







Site Locations - 2. Lake Tahoe - LT, 2

Weather

Air Temperature (c)	1.7
Weather Condition	Partly cloudy
Wind Speed (mph)	2.2
Humidity (%)	56
Precipitation (mm)	0

Details for Site

Way Point Prefix	Lake Tahoe - LT
Way Point Number	2
Time at Way Point	15:25
Way Point Description	Control Location
Are there visible signs indicating a cable crossing?	No
Is there visible cable at location?	See Notes

Was there a general site sample collected?	Yes
--	-----

General Sample (GS) Information (1 Item)

General Sample (GS) Information - 1. Sediment Collection, 2

Type of Sample for GS	Sediment Collection
Location of Collected Sample - GS	Other
Time of Collection - GS	15:26
Sample Prefix - GS	Lake Tahoe - LT
Sample ID (#) - GS	2
Additional Notes - GS (if any)	None.

Photo of GS Sample(s)



General Site Notes	Cable/Lead is visible. This is part of an approximately, seven mile cable connection for the main Tahoe Telecom line running from Baldwin Beach to 4 Ring Road.
---------------------------	---

Site Photos



Site Locations - 3. Lake Tahoe - LT, 1.2

Weather

Air Temperature (c)	1.7
Weather Condition	Partly cloudy
Wind Speed (mph)	2.2
Humidity (%)	56
Precipitation (mm)	0

Details for Site

Way Point Prefix	Lake Tahoe - LT
Way Point Number	1.2
Time at Way Point	16:00
Way Point Description	Splice Box, Cable Location
Are there visible signs indicating a cable crossing?	No
Is there visible cable at location?	See Notes
Was there a general site sample collected?	Yes

General Sample (GS) Information (4 Items)

General Sample (GS) Information - 1. Sediment Collection, 1.2

Type of Sample for GS	Sediment Collection
-----------------------	---------------------

Location of Collected Sample - GS | Under cable and splice box

Time of Collection - GS | 16:02

Sample Prefix - GS | Lake Tahoe - LT

Sample ID (#) - GS | 1.2

Additional Notes - GS (if any) | None.

Photo of GS Sample(s)



General Sample (GS) Information - 2. Splice Box Scraping, 1.2

Type of Sample for GS | Splice Box Scraping

Location of Collected Sample - GS | From Splice box

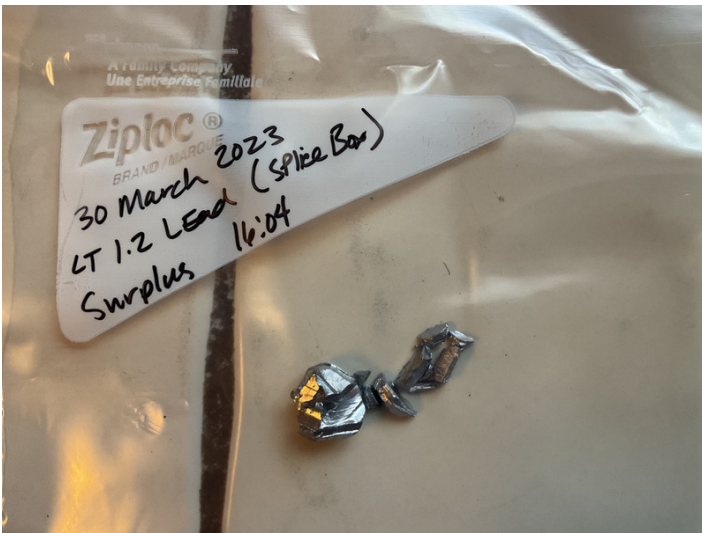
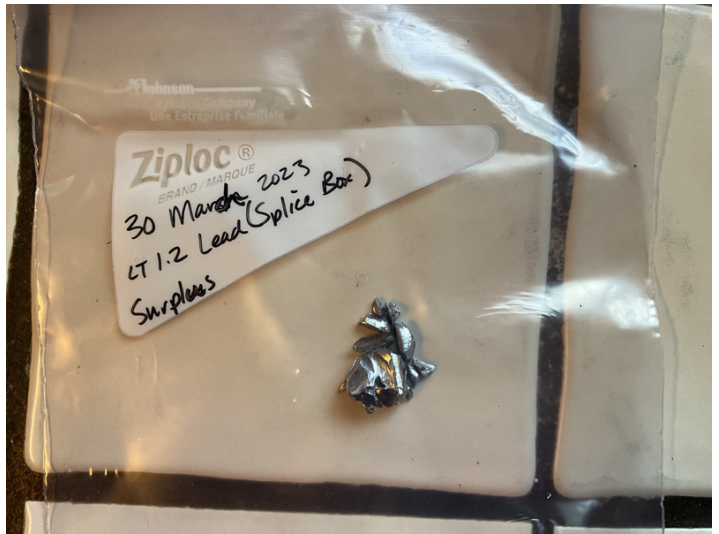
Time of Collection - GS | 16:04

Sample Prefix - GS | Lake Tahoe - LT

Sample ID (#) - GS | 1.2

Additional Notes - GS (if any) | None.

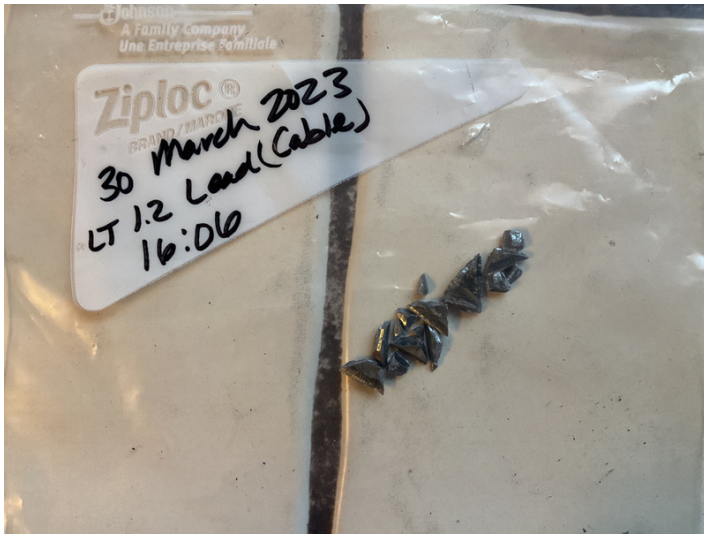
Photo of GS Sample(s)



General Sample (GS) Information - 3. Lead Scraping, 1.2

Type of Sample for GS	Lead Scraping
Location of Collected Sample - GS	From Cable
Time of Collection - GS	16:06
Sample Prefix - GS	Lake Tahoe - LT
Sample ID (#) - GS	1.2
Additional Notes - GS (if any)	None.

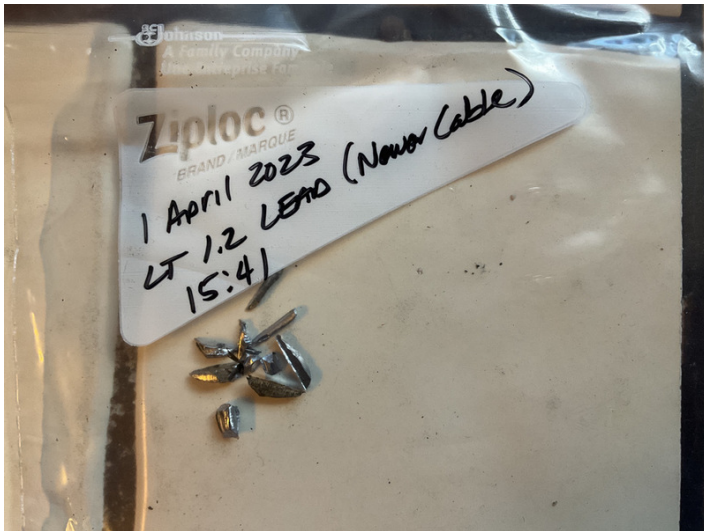
Photo of GS Sample(s)



General Sample (GS) Information - 4. Newer Lead Cable, 1.2 Newer Cable

Type of Sample for GS	Newer Lead Cable
Location of Collected Sample - GS	From Cable
Time of Collection - GS	15:41
Sample Prefix - GS	Lake Tahoe - LT
Sample ID (#) - GS	1.2 Newer Cable
Additional Notes - GS (if any)	This is a newer leaded cable running from the splice box into the woods.

Photo of GS Sample(s)



General Site Notes	Cable/Lead is visible. This is part of an approximately, seven mile cable connection for the main Tahoe Telecom line running from Baldwin Beach to 4 Ring Road.
---------------------------	---

Site Photos

