

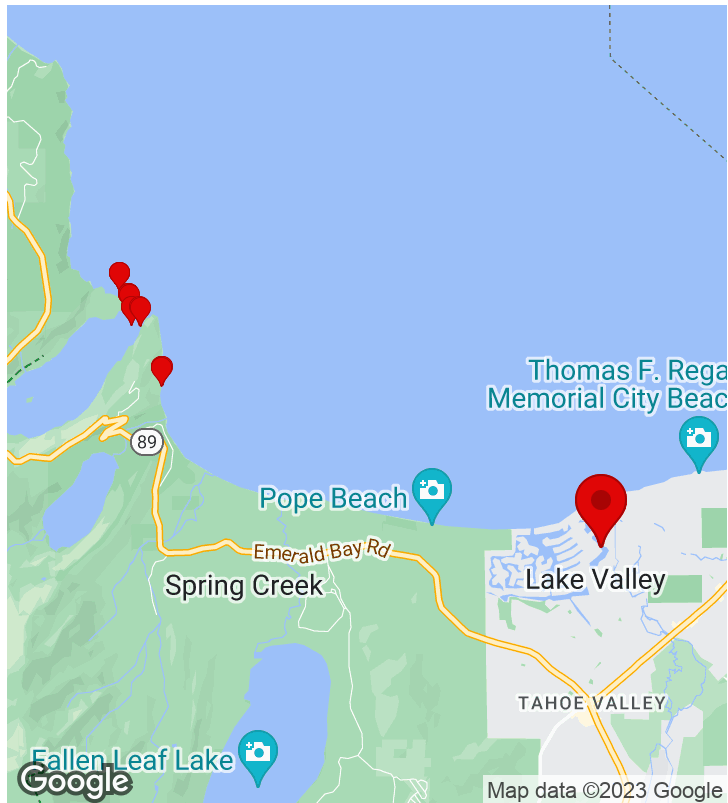
California Data Collection - Final



Investigation of data points along two specific cables that have been identified in Lake Tahoe and Emerald Bay.

March 31, 2023

7/9/2023, 5:16:05 PM UTC



CREATED

3/31/2023, 3:19:10 PM UTC

by Monique Rydel

UPDATED

7/9/2023, 5:16:05 PM UTC

by Monique Rydel

LOCATION

38.934138, -120.002678

General Report Information

Start Date	March 31, 2023
River/Body of Water	Lake Tahoe
Personnel	Seth Jones, Monique Rydel
Start Time	08:19
Travel Method	Boat

Weather Information

Air Temperature (c)	-1.1
Wind Speed (mph)	13.6

Site Locations (6 Items)

Site Locations - 1. Lake Tahoe - LT, 1.3

Weather

Air Temperature (c)	-8.3
Weather Condition	Sunny
Wind Speed (mph)	3.8
Humidity (%)	87
Precipitation (mm)	0

Details for Site

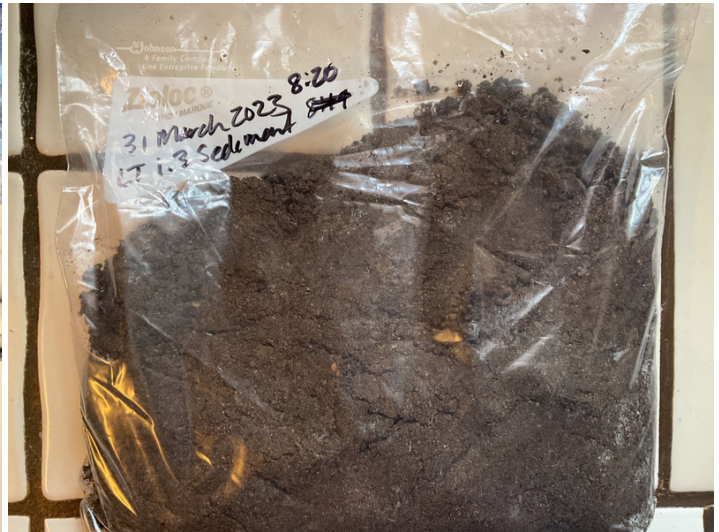
Way Point Prefix	Lake Tahoe - LT
Way Point Number	1.3
Time at Way Point	08:19
Way Point Description	Cable Location, Splice Box
Are there visible signs indicating a cable crossing?	N/A
Is there visible cable at location?	See Notes
Was there a general site sample collected?	Yes

General Sample (GS) Information (1 Item)

General Sample (GS) Information - 1. Sediment Collection, 1.3

Type of Sample for GS	Sediment Collection
Location of Collected Sample - GS	From Cable
Time of Collection - GS	08:20
Sample Prefix - GS	Lake Tahoe - LT
Sample ID (#) - GS	1.3
Additional Notes - GS (if any)	None.

Photo of GS Sample(s)



General Site Notes Cable/Lead is visible. This is part of an approximately, seven mile cable connection for the main Tahoe Telecom line running from Baldwin Beach to 4 Ring Road.

Site Photos



Site Locations - 2. Lake Tahoe - LT, 3

Weather

Air Temperature (c)	-8.3
Weather Condition	Sunny
Wind Speed (mph)	3.8
Humidity (%)	87
Precipitation (mm)	0

Details for Site

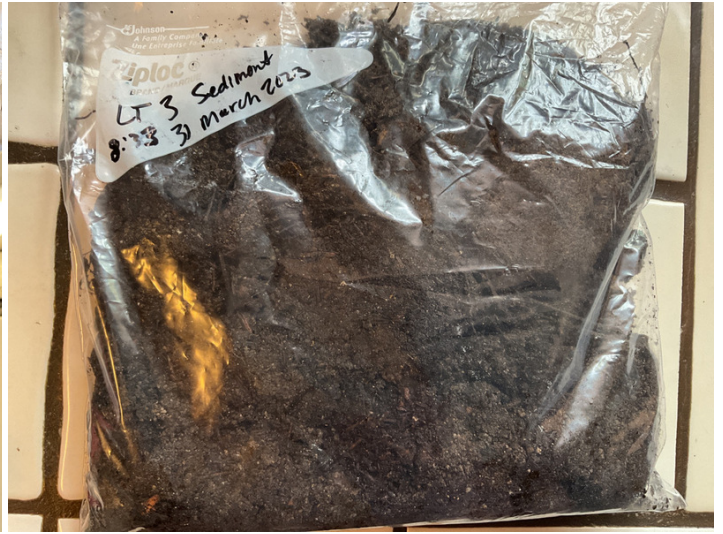
Way Point Prefix	Lake Tahoe - LT
Way Point Number	3
Time at Way Point	08:33
Way Point Description	Control Location
Are there visible signs indicating a cable crossing?	N/A
Is there visible cable at location?	See Notes
Was there a general site sample collected?	Yes

General Sample (GS) Information (1 Item)

General Sample (GS) Information - 1. Sediment: Control, 3

Type of Sample for GS	Sediment: Control
Location of Collected Sample - GS	Within Control Sample Limits
Time of Collection - GS	08:33
Sample Prefix - GS	Lake Tahoe - LT
Sample ID (#) - GS	3
Additional Notes - GS (if any)	None.

Photo of GS Sample(s)



General Site Notes

Control Location. Cable/Lead is visible. This is part of an approximately, seven mile cable connection for the main Tahoe Telecom line running from Baldwin Beach to 4 Ring Road.

Site Photos



Site Locations - 3. Emerald Bay - EB, 1

Weather

Air Temperature (c)	-2.8
Weather Condition	Sunny
Wind Speed (mph)	9.4
Humidity (%)	60
Precipitation (mm)	0

Details for Site

Way Point Prefix | Emerald Bay - EB

Way Point Number	1
Time at Way Point	09:36
Way Point Description	Cable Location, EB
Are there visible signs indicating a cable crossing?	N/A
Is there visible cable at location?	See Notes
Was there a general site sample collected?	Yes

General Sample (GS) Information (2 Items)

General Sample (GS) Information - 1. Water: Bottom, 1 Water

Type of Sample for GS	Water: Bottom
Location of Collected Sample - GS	Next to Severed Cable End
Time of Collection - GS	09:40
Sample Prefix - GS	Emerald Bay - EB
Sample ID (#) - GS	1 Water
Additional Notes - GS (if any)	Abandoned 1928 Telecom Cable running across the mouth of Emerald Bay. Severed at both North and South Ends.

Photo of GS Sample(s)



General Sample (GS) Information - 2. Water: Bottom, Delete

Type of Sample for GS	Water: Bottom
Location of Collected Sample - GS	From Cable
Time of Collection - GS	09:58
Sample Prefix - GS	Lake Tahoe - LT

Sample ID (#) - GS	Delete
Additional Notes - GS (if any)	None.
Photo of GS Sample(s)	
General Site Notes	Abandoned 1928 Telecom Cable running across the mouth of Emerald Bay. Severed at both North and South Ends.

Site Photos



Site Locations - 4. Emerald Bay - EB, 2

Weather

Air Temperature (c)	-2.8
Weather Condition	Sunny
Wind Speed (mph)	9.4
Humidity (%)	60
Precipitation (mm)	0

Details for Site

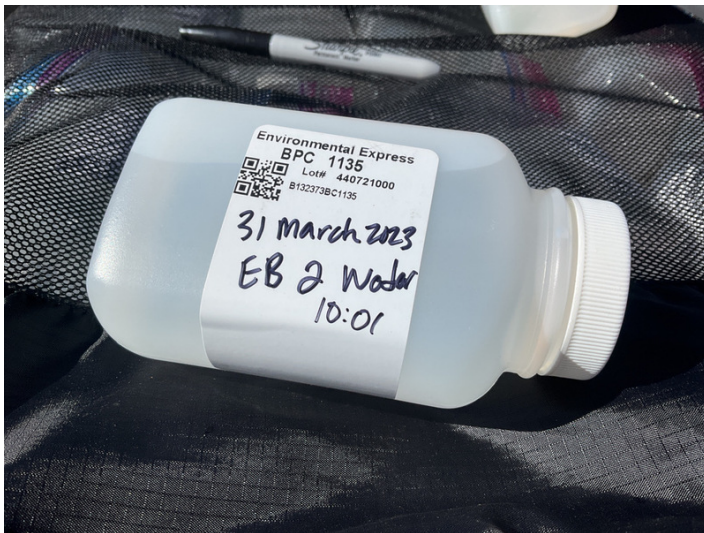
Way Point Prefix	Emerald Bay - EB
Way Point Number	2
Time at Way Point	10:00
Way Point Description	Control Location
Are there visible signs indicating a cable crossing?	N/A
Is there visible cable at location?	See Notes
Was there a general site sample collected?	Yes

General Sample (GS) Information (1 Item)

General Sample (GS) Information - 1. Water: Surface, 2 Water

Type of Sample for GS	Water: Surface
Location of Collected Sample - GS	Surface
Time of Collection - GS	10:01
Sample Prefix - GS	Emerald Bay - EB
Sample ID (#) - GS	2 Water
Additional Notes - GS (if any)	Control Sample for EB

Photo of GS Sample(s)



General Site Notes	Control Water Sample for EB
--------------------	-----------------------------

Site Photos



Site Locations - 5. Emerald Bay - EB, 1.1

Weather

Air Temperature (c)	-2.8
Weather Condition	Sunny
Wind Speed (mph)	9.4
Humidity (%)	60
Precipitation (mm)	0

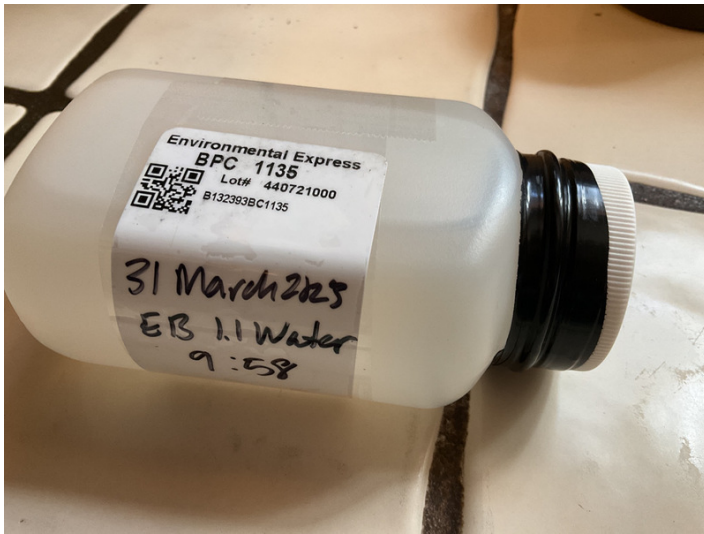
Details for Site

Way Point Prefix	Emerald Bay - EB
Way Point Number	1.1
Time at Way Point	09:46
Way Point Description	Cable Location
Are there visible signs indicating a cable crossing?	N/A
Is there visible cable at location?	See Notes
Was there a general site sample collected?	Yes

General Sample (GS) Information (2 Items)

General Sample (GS) Information - 1. Water: Bottom, 1.1 Water

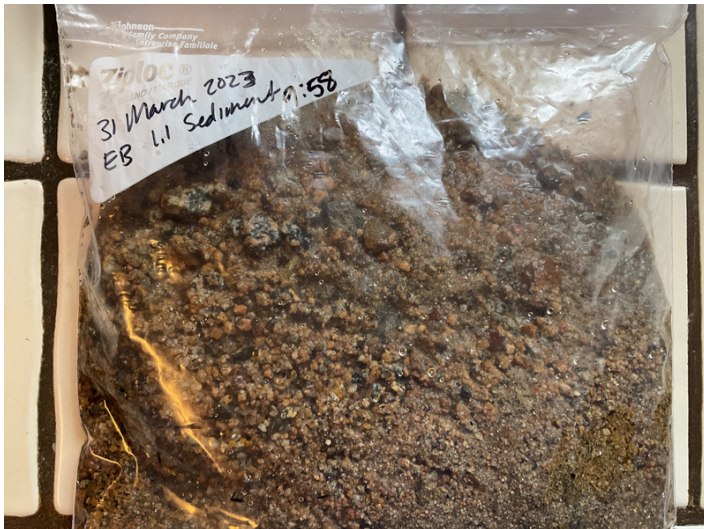
Type of Sample for GS	Water: Bottom
Location of Collected Sample - GS	Next to Cable End
Time of Collection - GS	09:58
Sample Prefix - GS	Emerald Bay - EB
Sample ID (#) - GS	1.1 Water
Additional Notes - GS (if any)	North end of severed Emerald Bay Telecom Cable
Photo of GS Sample(s)	



General Sample (GS) Information - 2. Sediment: Under Cable, 1.1 Sediment

Type of Sample for GS	Sediment: Under Cable
Location of Collected Sample - GS	Under Cable
Time of Collection - GS	09:58
Sample Prefix - GS	Emerald Bay - EB
Sample ID (#) - GS	1.1 Sediment
Additional Notes - GS (if any)	North end of Emerald Bay Severed Cable

Photo of GS Sample(s)



General Site Notes	Abandoned 1928 Telecom Cable running across the mouth of Emerald Bay. Severed at both North and South Ends. (Started recording this data collection under EB 1, so the File Creation Timestamp will be later than the recorded sample collection).
--------------------	--

Site Photos

Site Locations - 6. Lake Tahoe - LT, 1.4

Weather

Air Temperature (c)	0.6
Weather Condition	Sunny
Wind Speed (mph)	11.9
Humidity (%)	43
Precipitation (mm)	0

Details for Site

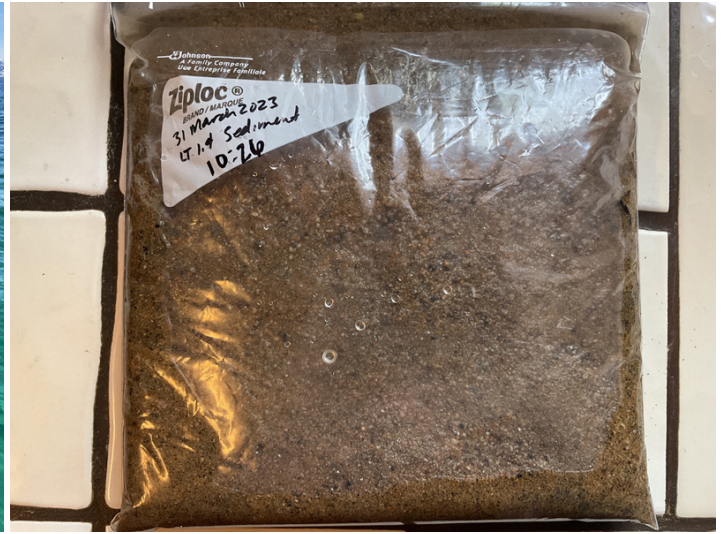
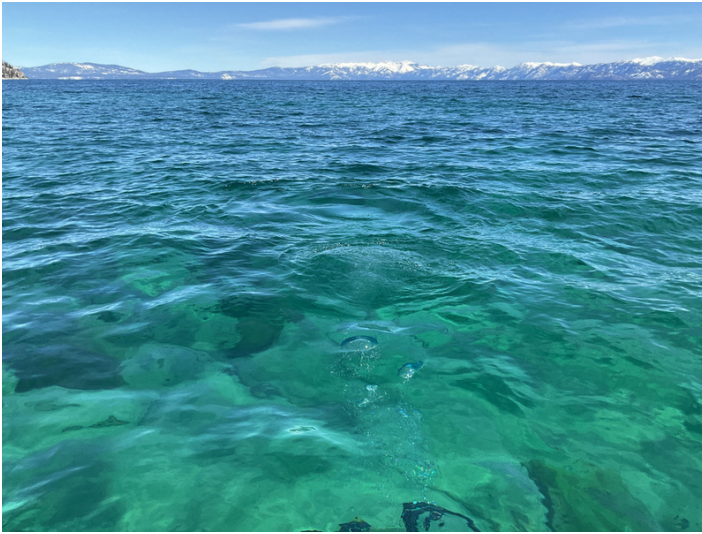
Way Point Prefix	Lake Tahoe - LT
Way Point Number	1.4
Time at Way Point	10:25
Way Point Description	Cable Location
Are there visible signs indicating a cable crossing?	N/A
Is there visible cable at location?	See Notes
Was there a general site sample collected?	Yes

General Sample (GS) Information (2 Items)

General Sample (GS) Information - 1. Sediment Collection, 1.4 Sediment

Type of Sample for GS	Sediment Collection
Location of Collected Sample - GS	Under Cable
Time of Collection - GS	10:26
Sample Prefix - GS	Lake Tahoe - LT
Sample ID (#) - GS	1.4 Sediment
Additional Notes - GS (if any)	None.

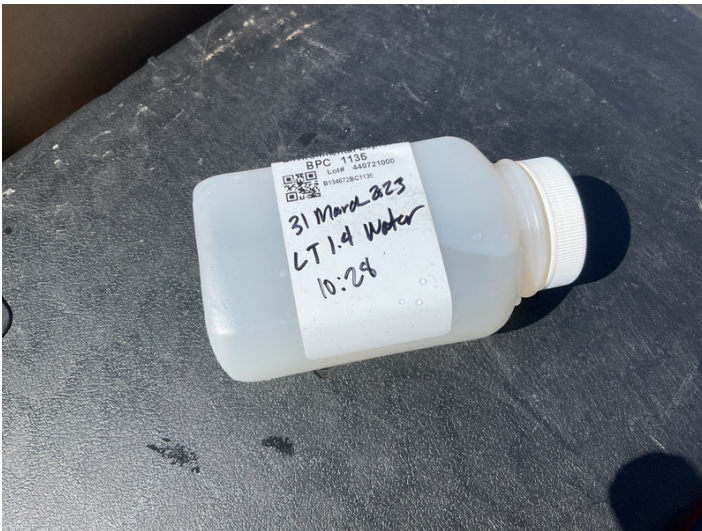
Photo of GS Sample(s)



General Sample (GS) Information - 2. Water: Bottom, 1.4 Water

Type of Sample for GS	Water: Bottom
Location of Collected Sample - GS	From Cable
Time of Collection - GS	10:28
Sample Prefix - GS	Lake Tahoe - LT
Sample ID (#) - GS	1.4 Water
Additional Notes - GS (if any)	None.

Photo of GS Sample(s)



General Site Notes	Cable/Lead is visible. Cable/Lead is visible. This is part of an approximately, seven mile cable connection for the main Tahoe Telecom line running from Baldwin Beach to 4 Ring Road.
---------------------------	--

Site Photos

