





# KIERA STUART MONOLITHIC VULNERABILITY

FOREWORD BY JULIA GODDARD

BOX FACTORY GALLERY - NEW YORK

1519 Decatur Street Ridgewood, New York 11385



## Foreword

by Julia Goddard

Kiera Stuart's work provides surreal depictions of relationship dynamics, human connection and explorations of vulnerability. Included in the exhibition are mural scale oil paintings on canvas which include drawings that evoke the images of Hilma af Klint and the landscapes of Salvador Dali. In Stuart's work the figures share space and physically support each other in almost architectural ways. Her understanding of the connection between formal elements of composition and color are factors that contribute to a dynamic range of inter-relational connections occurring throughout the work. Stuart's work employs non-specific environments, such as a forest or desert landscape, that task the viewer with imagining the context of the scene. Where are these women and what is going on?

Stuart says her figures are androgenous and non racially specific to focus on what all of us have in common and the exhibition casts an eye in this direction. Stuart is co-founder of The Box Factory and a pillar in Brooklyn's emerging young artist scene. She recently completed her MFA at Brooklyn College and exhibited in Shelter from the Storm at 601 Artspace. Stuart is dedicated to social justice, equality and inclusivity which she brings into her works. The artist will be donating 10 percent of all sales to Planned Parenthood for women's healthcare.

*Whether one is rich or poor, educated or illiterate, religious or non-believing, man or woman, black, white, or brown, we are all the same. Physically, emotionally, and mentally, we are all equal. We all share basic needs for food, shelter, safety, and love. We all aspire to happiness and we all shun suffering. Each of us has hopes, worries, fears, and dreams. Each of us wants the best for our family and loved ones. We all experience pain when we suffer loss and joy when we achieve what we seek. On this fundamental level, religion, ethnicity, culture, and language make no difference."*

- Dali Llama

# From the artist

by Kiera Stuart

My art practice explores surreal depictions of relationship dynamics, human connection, and explorations of vulnerability. Studio process begins with journaling and automatic drawing - both are pillars of mental health and self exploration. The drawings utilize organic repetitive lines, which reflect - and help to process - my inner written landscape. The organic lines are reminiscent of the peace I feel while walking through a forest, the repetition of earth cycles, and how patterns repeat through nature.

I then take the most emotionally impactful sketches to canvas or paper, to bring intimate, personal thoughts to a platform for presentation. This is a practice of vulnerability; the large scale forces me to confront my inner self. It also gives a sense of protection, provides a space to heal, and acts as a metaphor for personal empowerment.

These characters find dialogue with each other on the canvas, creating psychological maps that consider alternative perspectives. The different perspectives attempt to find balance between the voices to process complex emotions and help gain a deeper sense of self awareness. The figures in the paintings are androgynous and racially nonspecific to consider that we have much more in common than appearances.

I find comfort in the idea that many others have felt the same things I have, and battled the same inner conflicts. The personal is often universal. I hope the viewer finds as much healing and hope as I felt while creating these works.



REFLECTION - oil on canvas 53x88 in, 2022  
\$3,750



EVOLVE - oil on canvas  
76x96in, 2022  
\$8,850



SOURCE - oil on canvas 76x120in, 2021  
\$9,500



THREE GRACES - oil on canvas  
76x82in 2022  
\$8,250

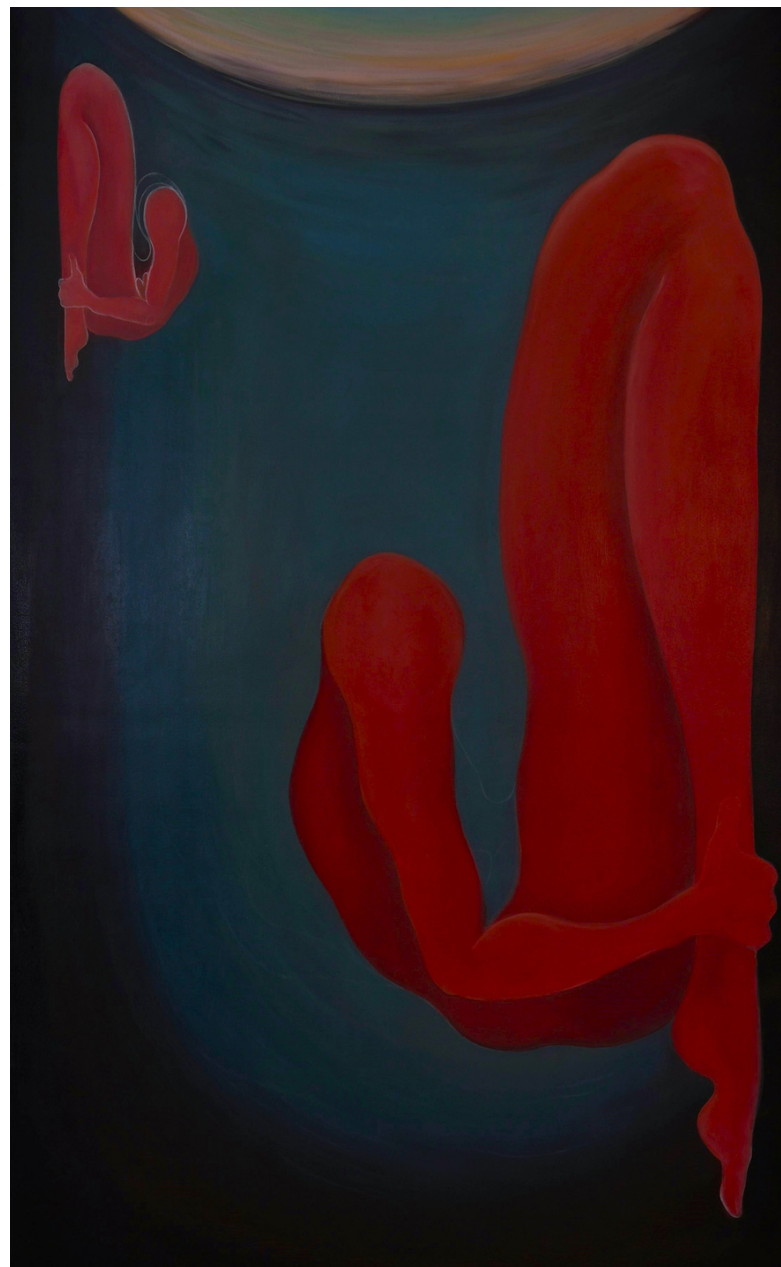


CODEPENDENCY - oil on canvas  
60x40in, 2021  
\$4,700

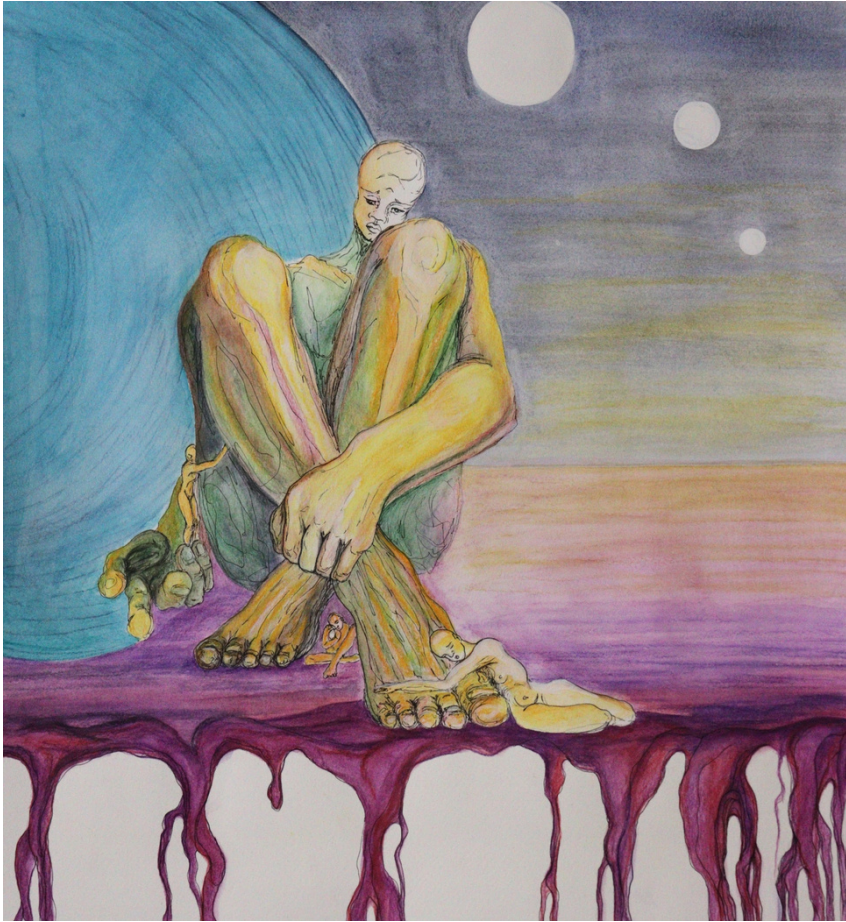




CRADLE - oil on masonite,  
24.5x33.5in 2022  
\$400



FLOAT - oil on canvas,  
70x43in 2022  
\$2,750



STARDUST - ink and watercolor on paper 18x17in, 2022  
\$200 / \$300 (framed)



FUTURE LANDSCAPE - ink, oil paint, arches paper mounted on  
masonite panel, 15.25x21.5in 2022  
\$325



WRINKLES AND ROADS - 18x14, oil on panel 2019  
\$450

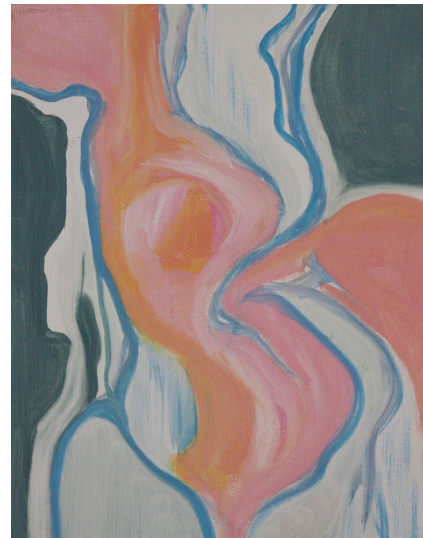


FIGURE STUDY 2.21 - 10x8in, oil on canvas 2022  
\$300



FIGURE STUDY 12.21 - 10x8in, oil on canvas 2021  
\$300

FIGURE STUDY 7.20 - 10x8in, oil on canvas 2022  
\$300

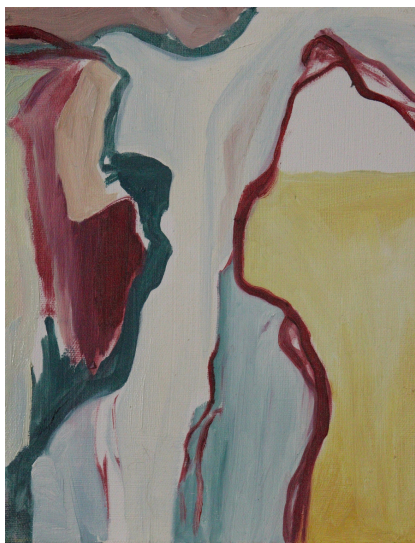
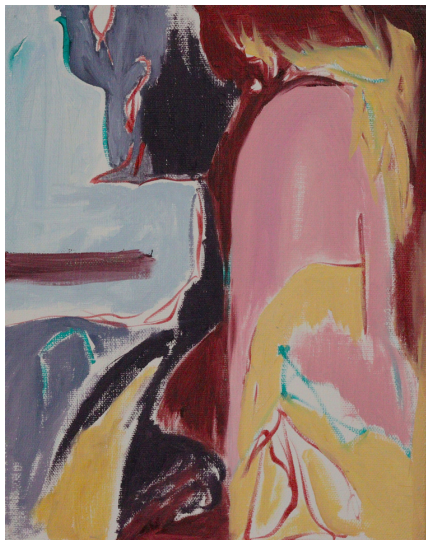
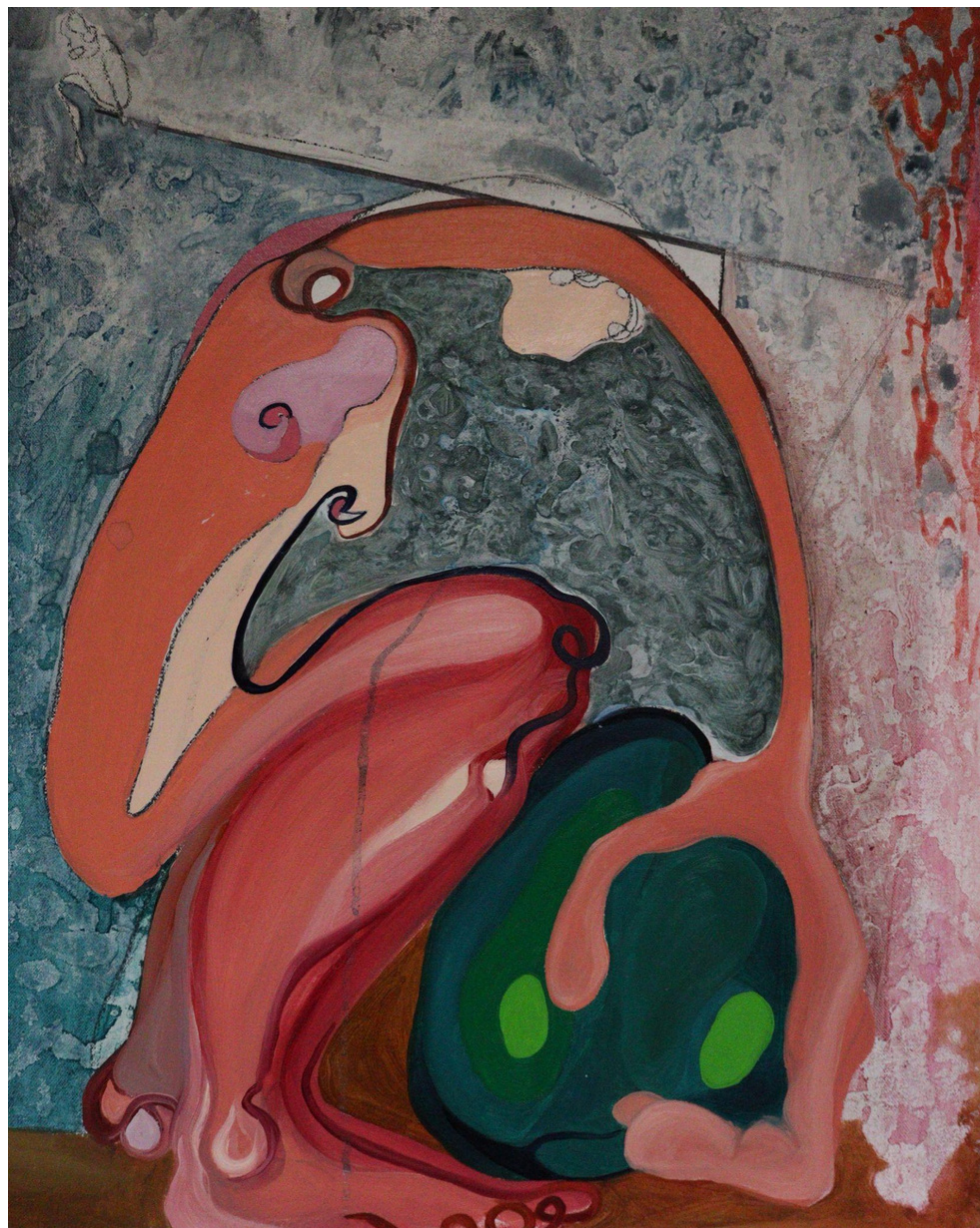


FIGURE STUDY 6.20 - 10x8, oil on canvas 2022  
\$300



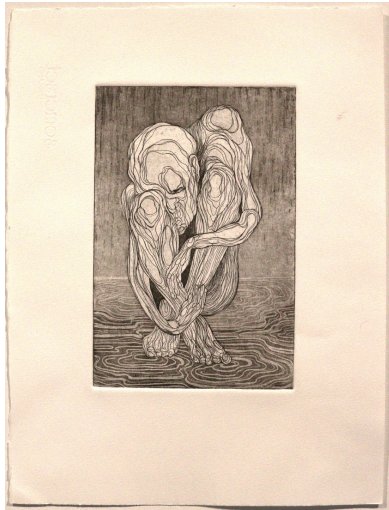
BALANCE - 18x16, oil on canvas 2020  
\$475



MULTIVERSE (Edition 2 of 20) - Lino cut print collage, black oil based  
ink and bristol paper. 20x14" 2020  
\$300 / \$450 (framed)



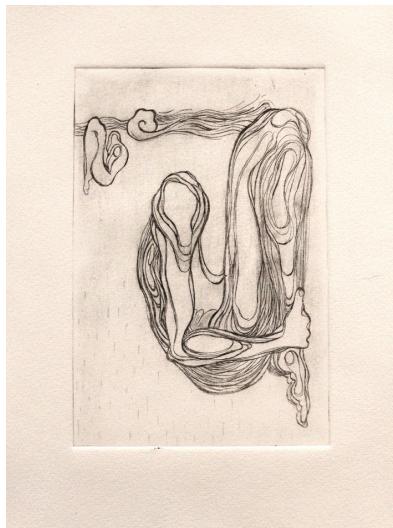
Sixth Verse (Edition of 20) - Lino cut print collage, black oil based  
ink and bristol paper. 14x11" 2021  
\$300 / \$450 (framed)



SIGH - etching (edition 1 of 6)  
8x6 plate, 15x11 paper, 2022  
\$300 / \$400 (framed)



HOLD ME - etching (edition 1 of 6)  
8x6 plate, 15x11 paper, 2022  
\$300 / \$400 (framed)



FLOAT - etching (edition 1 of 6)  
8x6 plate, 15x11 paper, 2022  
\$300 / \$400 (framed)

# PHOTOGRAPHY

Monolithic Vulnerability



STUDIO PORTRAIT 1 (edition 1 of 10)  
11x8.5 inches, 2022  
\$75 / \$150 (framed)



STUDIO PORTRAIT 3 (edition 1 of 10)  
11x8.5 inches, 2022  
\$75 / \$150 (framed)



STUDIO PORTRAIT 6 (edition 1 of 10)  
11x8.5 inches, 2022  
\$75 / \$150 (framed)



STUDIO PORTRAIT 4 (edition 1 of 10)  
11x8.5 inches, 2022  
\$75 / \$150 (framed)



STUDIO PORTRAIT 2 (edition 1 of 10)  
11x8.5 inches, 2022  
\$75 / \$150 (framed)



STUDIO PORTRAIT 5 (edition 1 of 10)  
11x8.5 inches, 2022  
\$75 / \$150 (framed)