

Detail of "What is your way to face reality?" courtesy of the artist.

The Box Factory Gallery
proudly presents

Through The Looking Glass

A virtual solo exhibit featuring work by
Shuyang Zhou
Curated by Kiera Stuart

Virtual Exhibit on the Gallery's website

April 4th, 2023 - June 1st, 2023

Private viewings of the work available per request at
The Box Factory Gallery 1519 Decatur st, Ridgewood NY
Visit boxfactorygallery.com for more information

Shuyang Zhou's lithograph series depict small humans trapped in vitrines, as if unwilling participants in a giant's cosmic experiment. Zhou creates vivid windows into imagined psychological dimensions through realism; which reflect the human condition. This series freezes a moment of tension, it feels as though the climax of the story stopped short at its peak- leaving the viewer to complete the narrative, or to exist inside the moment the figures are encapsulated in.

Lithography is a labor intensive process that involves wax crayon, chemicals, and a reversed final image on a rock that is ground down to a flat surface. The reversal of image could imply an altered psychological state, or perhaps it is an invitation to step through the looking glass; like Alice steps into another dimension. The process of lithography poetically echoes the subject matter of this body of work; resisting chemicals, contained in a rectangular area polished and coerced to submit to the artist's wishes. Just as the figures are trapped, nude and under control of a larger entity.

Shuyang was born in Beijing in 1995, and is currently based in New York City where she received Brooklyn College an MFA in Fine Arts in 2022. She obtained a BFA in painting and printmaking from Savannah College of Art and Design in 2019, receiving a SCAD Achievement and Academic Honors Scholarship. She has participated in group exhibitions in Savannah, Atlanta, and New York City, in addition to solo shows in Savannah and New York City. She received a Dedalus Scholarship nomination in 2022 and her works and artistic achievements have been published on Create! Magazine and BOOOOOOOOM.



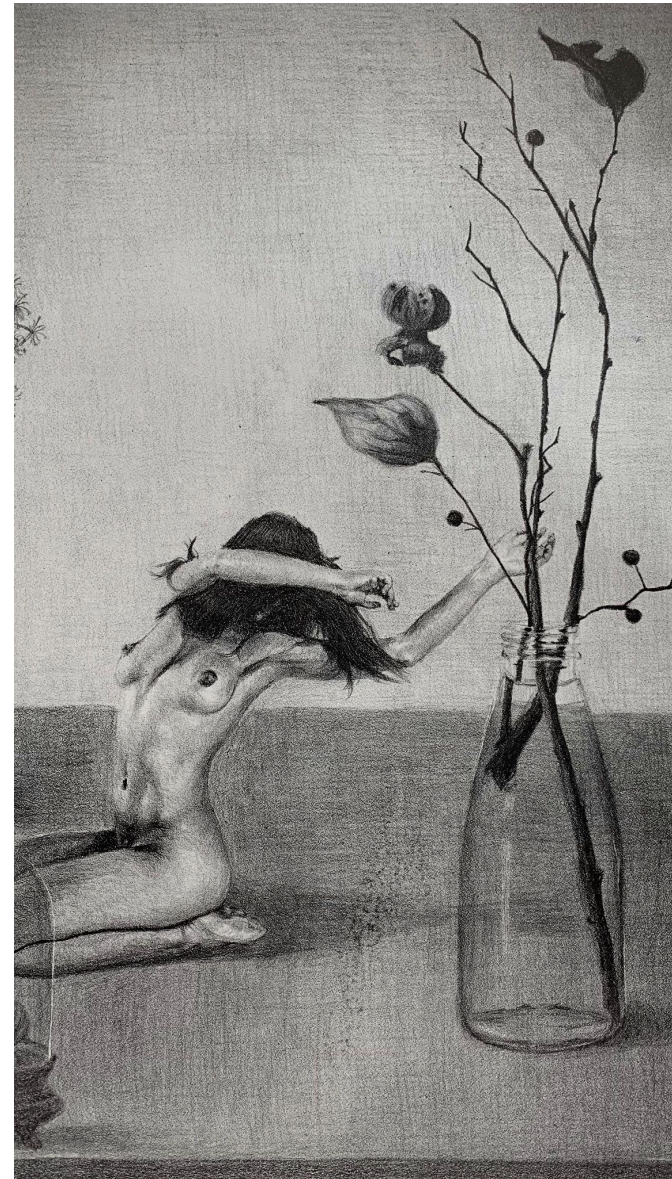
Detail of "Invisible Black" courtesy of the artist.

Statement by Shuyang Zhou:

“This lithograph series empathizes with human struggle by depicting characters in transparent vitrines as if caught up as a subject in a cosmic experiment.

My prints feature unexpected connections and strange scale. I create works in which an actual event has yet to take place or has just ended. Moments are left hanging, suggestive of atmosphere and suspense, leaving one to ponder, is this a narrative thread? As the drama unfolds in my painting, the build-up of tension is frozen in place. My art becomes the memory of an event that will never take place or an event long past.

The source of imagination for art, which is a direct means by which we exchange ideas, is unpredictable. Additionally, it has the power to alter one's perspective and generate fresh concepts. These concepts, however, frequently originate from our lives. I use realism and drama as a form of storytelling, giving rise to arouse emotion and thought.”

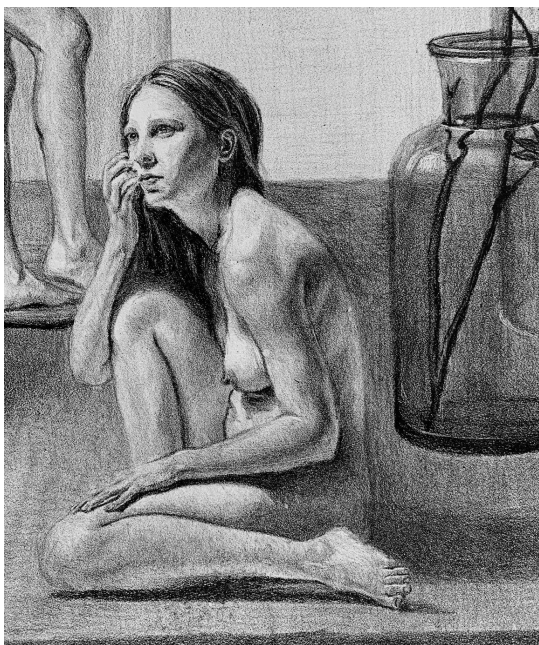


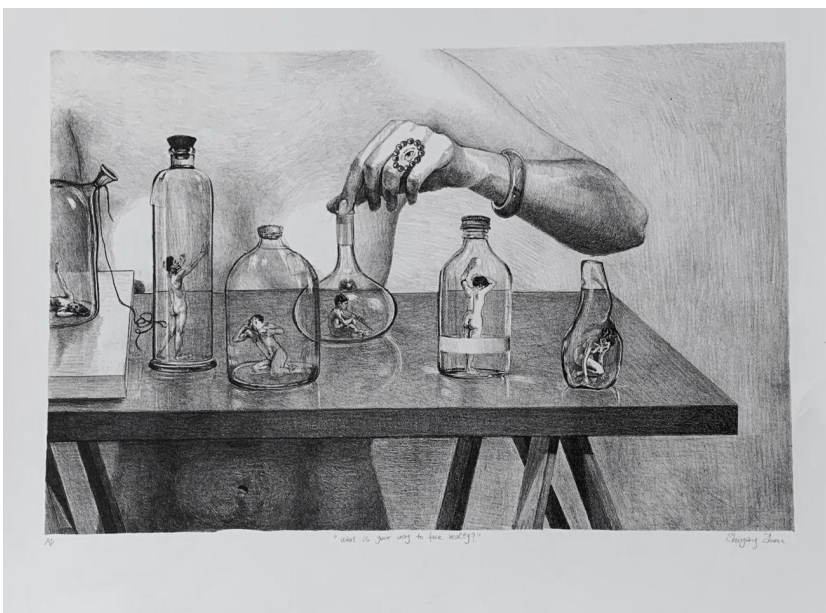
Detail of “What is holding you back?” courtesy of the artist.



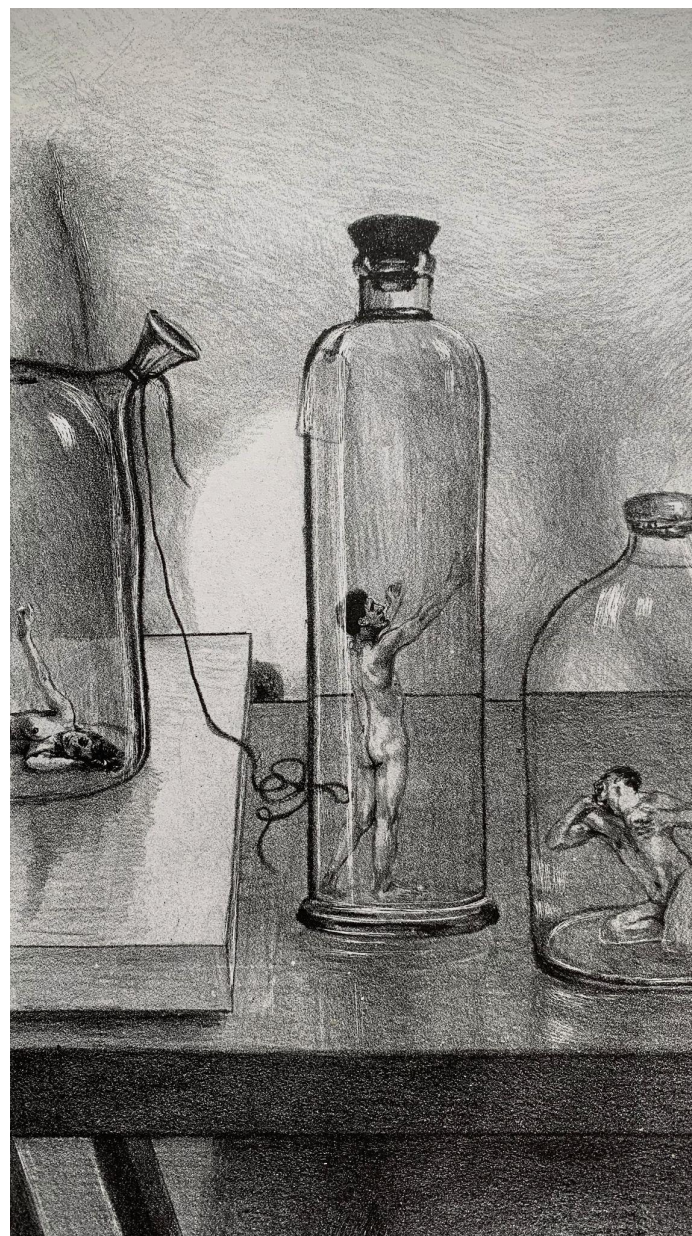
What is holding you back?

2018 Lithography 23.5"x 36" Limited edition: 18 available.





What is your way to face reality?
 2018 Lithography 19"x 24"
 Limited edition: Two versions Each version of 10 is available

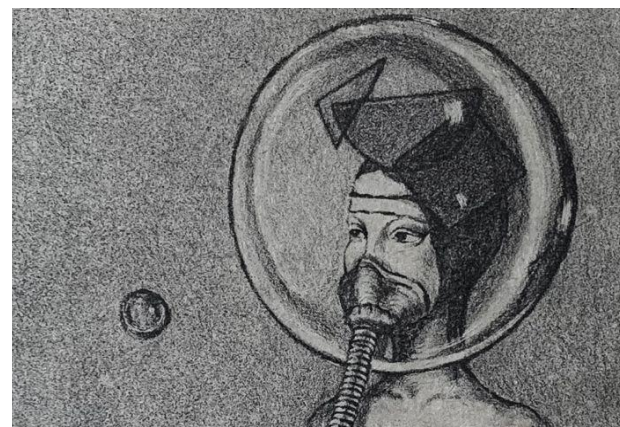


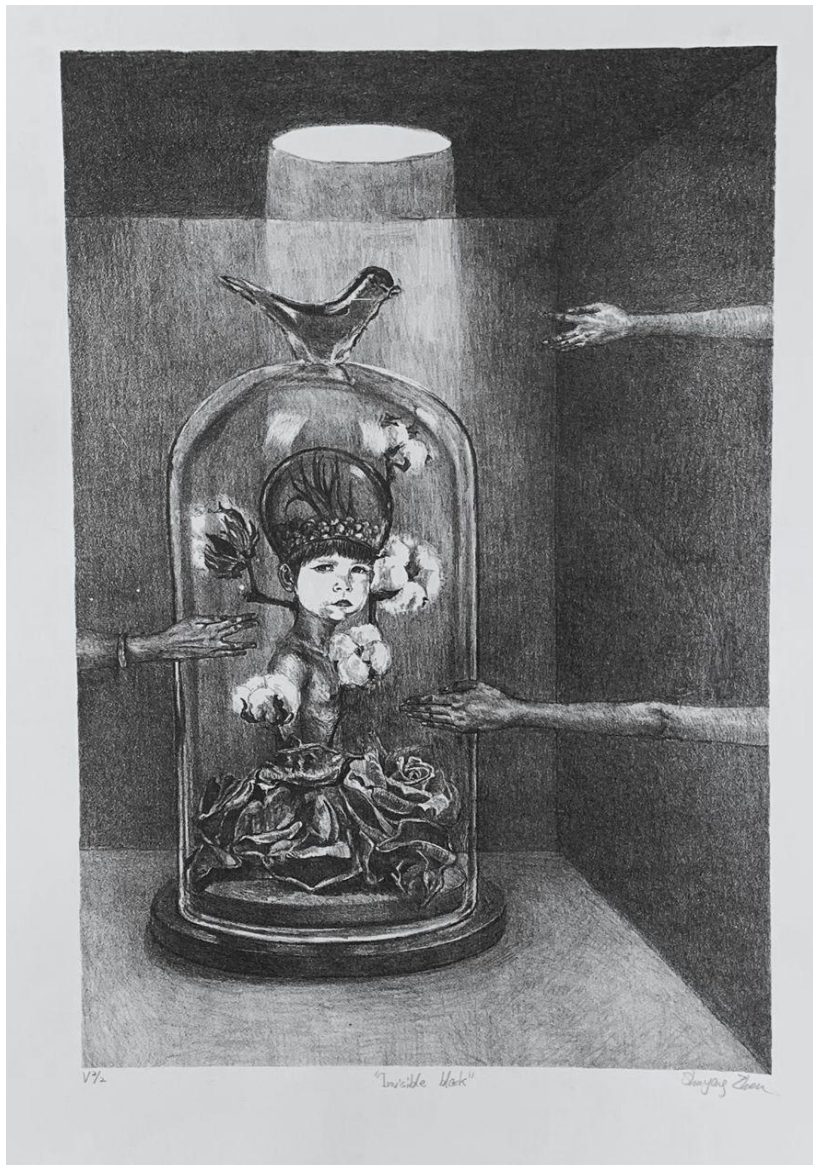


Apnea

2017 Lithography 6.3"x 9.4"

Limited edition: Two versions Each version of 5 is available.

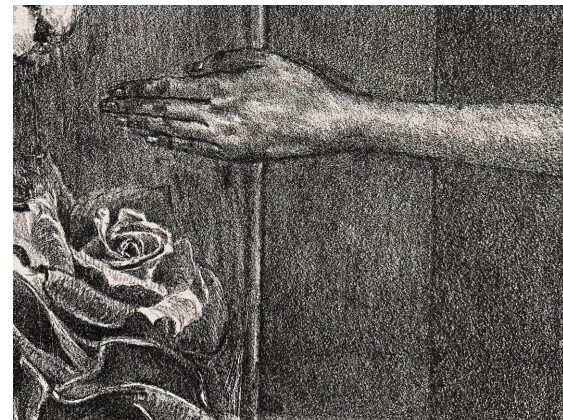




Invisible Black

2018 Lithography 15"x 22"

Limited edition: Three versions Each version of 5/6 is available.





Be OK

2018 Lithography 7"x 10.5"

Limited edition: Three versions Each version of 7/8 is available.

