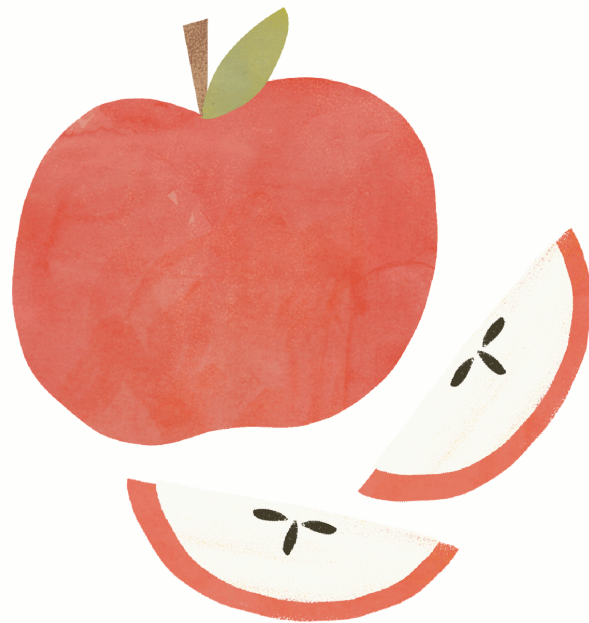




Woolf Farms
Field Trip Guide
Fall 2026





What to expect at Woolf Farms

Hello! We are excited to offer our local schools more opportunities to explore and play at our farm! This year, we are offering 3 different programs to facilitate optimal learning and interest for your students.

- Apple Blossoms: Grades K-2
- Apple Buds: Grades 3-4
- Apple Adventurers: Grades 5-6

Description of these programs are included in this packet. Each program will have some similar activities which include a hay wagon ride and apple tasting contest. Each student will also receive a delicious homemade donut, a cup of our own fresh-pressed apple cider and 3 apples to take home. Each group of students will rotate through our "Activity Barn". In our barn we have putt-putt, a basketball hoop game, apple slingshots, KanJam frisbee toss, tube slides, hay maze, and a corn sensory play area. We do ask that chaperones and teachers provide adult supervision during this time.

The unique aspects of each program will be STEM focused with direct teaching from Dale Woolf, co-owner and lead farmer at Woolf Farms. Besides being a third generation fruit farmer, Dale has a BA in Education with a focus in History. He is passionate about teaching kids and creating a family-friendly environment at Woolf Farms. We guarantee your students will enjoy their time with Farmer Dale!

We appreciate your time in reviewing this field trip guide and hope your school will consider Woolf Farms for a fun-filled field trip experience for your students!



Apple Blossoms: Grades K-2

Apple Blossom Program

- Students will enjoy a wagon hay ride through our apple orchard.
- Farmer Dale will lead a presentation for students to teach about Woolf Farms and the crops that are grown on the farm.
- Taste Contest! Students can vote for their favorite apple variety based on what is currently being picked in the orchard that week.
- Groups of students can rotate turns playing in our Activity Barn with adult supervision.
- Cost: \$6/ student which includes small cup of apple cider, 1 donut, and 3 apples to take home.





Apple Buds : Grades 3-4

Apple Bud Program

- Students will enjoy a wagon hay ride through our apple orchard.
- Farmer Dale will lead a presentation for students to teach about the seasonal care required for apple trees including planting, pruning, thinning, harvesting and storage of our apples.
- Taste Contest! Students can vote for their favorite apple variety based on what is currently being picked in the orchard that week.
- Groups of students can rotate turns playing in our Activity Barn with adult supervision.
- Cost: \$6/ student which includes small cup of apple cider, 1 donut, and 3 apples to take home





Apple Adventurers: Grades 5-6

Apple Adventurer Program

- Students will enjoy a wagon hay ride through our apple orchard.
- Farmer Dale will lead students on an orchard walk and he will discuss different apple varieties grown at Woolf Farms. He will also discuss the process of making apple cider.
- Taste Contest! Students can vote for their favorite apple variety based on what is currently being picked in the orchard.
- Groups can rotate turns playing in our Activity Barn with adult supervision.
- Cost: \$6/ student which includes small cup of apple cider, 1 donut, and 3 apples to take home



FAQ

What is the cost for participation?

The cost is \$6/ student. This also includes a donut, small cup of cider, and 3 apples to take home for each student!

What food allergens are present?

Donuts contain wheat, dairy, soy, and may contain nuts. Our apple cider and apples only contain... Apples!

What is the time duration of the program?

Suggested time duration may depend on the size of the group but generally is 2-3 hours. We are flexible to meet the needs of your group! We also have picnic tables available if students and adults wanted to bring a packed lunch to eat outside.

Is our facility Handicap Accessible?

Yes! Our main store building is single story and our wagon ride has a ramp to allow for wheelchair accessibility. Entry into the activity barn would require passing over uneven surfaces though the ground is mainly level. If you have more questions, feel free to inquire when you contact us!

Contact Information

Dale Woolf

woolffarms@gmail.com

330-257-4495

We hope you consider Woolf Farms for your fall field trip experience! We look forward to working with you and meeting your students!