



DECEMBER 2025

# CAWD NEWSLETTER

## CAWD RIVERS PART 1 : The Assiniboine River

The Assiniboine and Souris Rivers are the two major watercourses in south central Manitoba. Both rivers flow through the Central Assiniboine and Lower Souris Watershed, which is part of the larger Assiniboine River Basin. This month we will be providing information on the Assiniboine River.

The Assiniboine River gets its name from the Assiniboine First Nation, which stands for “Stone Enemy. This river is 1,070 kilometers long and runs through southwestern Canada into Saskatchewan and Manitoba. This meandering river starts east of the community of Kelvington Saskatchewan, above the Manitoba Escarpment. It then enters Manitoba near Roblin MB, where it then flows south creating Lake of the Prairies and combining with the Shell River. The Assiniboine River at this time will be in the Assiniboine West Watershed District. The Shellmouth Dam located near the Assiniboine Provincial Park, then controls the flow levels for the Assiniboine River downstream by opening or closing the controls on the dam. Once the river flows through the Dam, it will flow south until it gets to St Lazare Manitoba where it will then join up with the Qu’appelle River. From here the Assiniboine River will continue its journey through its deep valleys heading south east through areas like Miniota, Souix Valley First Nation and the City of Brandon.

Article Continues on Page 02 —→

## Events:

November 11<sup>th</sup> - 12<sup>th</sup>

MFGA Conference Brandon MB

December 1<sup>st</sup> - 3<sup>rd</sup>

MAW Conference Brandon MB

December 24<sup>th</sup> - January 2<sup>nd</sup>

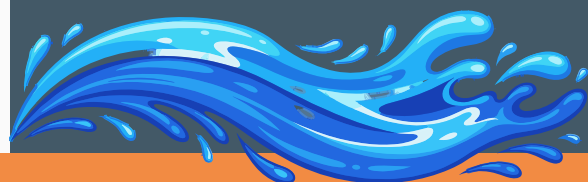
CAWD Staff Christmas Holidays.

Staff will return to the office

January 5<sup>th</sup> 2026!

## DID YOU KNOW?

Manitoba has over 100,000 lakes and waterways, that hold some of Canada’s largest fish!





Along its way to Brandon MB it will meet up with a variety of creeks and rivers such as the Arrow River, Gopher Creek, and the Oak River. The Assiniboine River then will exit the Assiniboine West Watershed District and enter the Central Assiniboine Watershed District North of Kemnay Manitoba while also joining with the Little Saskatchewan River. Heading southeast from Brandon the river will make its way to Treebank MB where it will join with CAWD's second main river, the Souris River. It will then make a long journey winding through Spruce Woods Provincial Park and start heading northeast through the Portage La Prairie Reservoir where it will leave the Central Assiniboine Watershed District and join the La Salle Redboine Watershed District. From here it will head down into the heart of Winnipeg where it will meet its end and join with the Red River at the Forks.

For more information on the Assiniboine River please visit  
<https://www.gov.mb.ca/mti/wms/floodcontrol/index.html#arb>



For information on programs and funding please visit  
[www.centralassiniboinewd.ca](http://www.centralassiniboinewd.ca)  
or call the office at  
1-877-535-2139

Thank you for Subscribing!

## IN LOVING MEMORY:

It is with greatest sadness that the CAWD Staff and Board share the news of the passing of Jack Bolack.

Jack was a member on the main board for for 24 years. Being apart of the Tiger Hills Conservation District then through the amalgamation and creation of the Assiniboine Hills Conservation District and then upon the most recent name and border change for Central Assiniboine Watershed District.

Jacks stories and laughs brought joy to all staff and board members from past and present. He will be truly missed but never forgotten.

