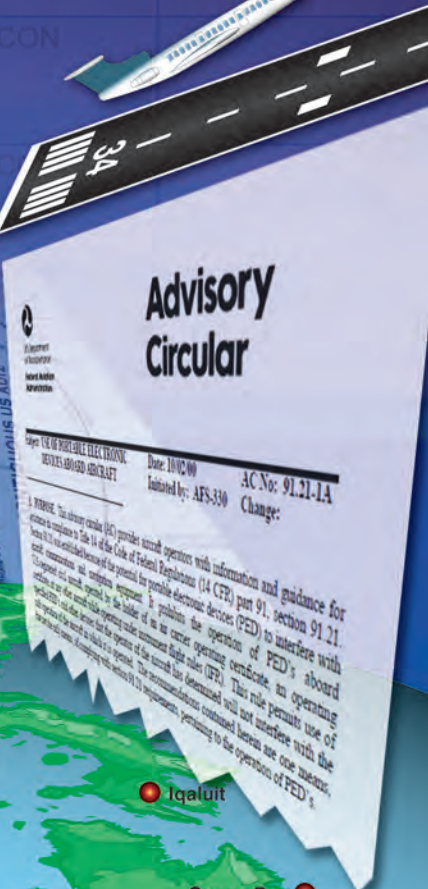
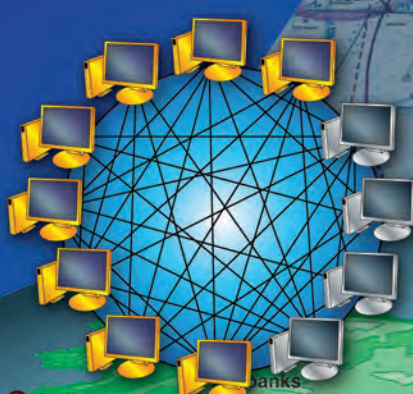


Chapter 5

Improvement Plans

Introduction

In the upcoming years, exciting new technologies will be developed and implemented to help ease air traffic congestion, add to system capacity, and enhance safety. Some of these seamless changes will be invisible to pilots. Others will entail learning new procedures, aircraft equipment, and systems that will introduce powerful new capabilities and dramatically increase the safety of all flight operations.



Next Generation Air Transportation (NextGen) System

Next Generation Air Transportation System (NextGen) is a comprehensive overhaul of the National Airspace System (NAS) designed to make air travel more convenient and dependable, while ensuring flights are as safe and secure as possible. It moves away from ground-based surveillance and navigation to new and more dynamic satellite-based systems and procedures, and introduces new technological innovations in areas such as weather forecast, digital communications, and networking. [Figure 5-1] When fully implemented, NextGen will safely allow aircraft to fly more closely together on more direct routes, reducing delays, and providing unprecedented benefits for the environment and the economy through reductions in carbon emissions, fuel consumption, and noise. [Figure 5-2]

Implementation in stages across the United States is due between 2012 and 2025. In order to implement NextGen, the FAA will undertake a wide-range transformation of the

entire United States air transportation system. NextGen consists of the following five systems:

1. Automatic dependent surveillance-broadcast (ADS-B)—automatically broadcasts the aircraft’s position and other aircraft specific information to air traffic control (ATC) ground facilities and nearby aircraft equipped with ADS-B In. Effective January 1, 2020 all aircraft operating in certain controlled U.S. airspace will be required to operate ADS-B Out equipment at all times. While Global Navigation Satellite System (GNSS) is not mandated by rule as the position sensor, it is currently the only position source that meets the rule’s performance requirements. Aircraft broadcasting ADS-B Out data provide ATC and cooperating ADS-B-In aircraft more precise on-the- ground or in-the-air positioning information based on the increased frequency of the data broadcasts and the accuracy of GNSS. ADS-B will provide a complete picture of air traffic for ATC and pilots of ADS-B In-equipped aircraft. The FAA’s

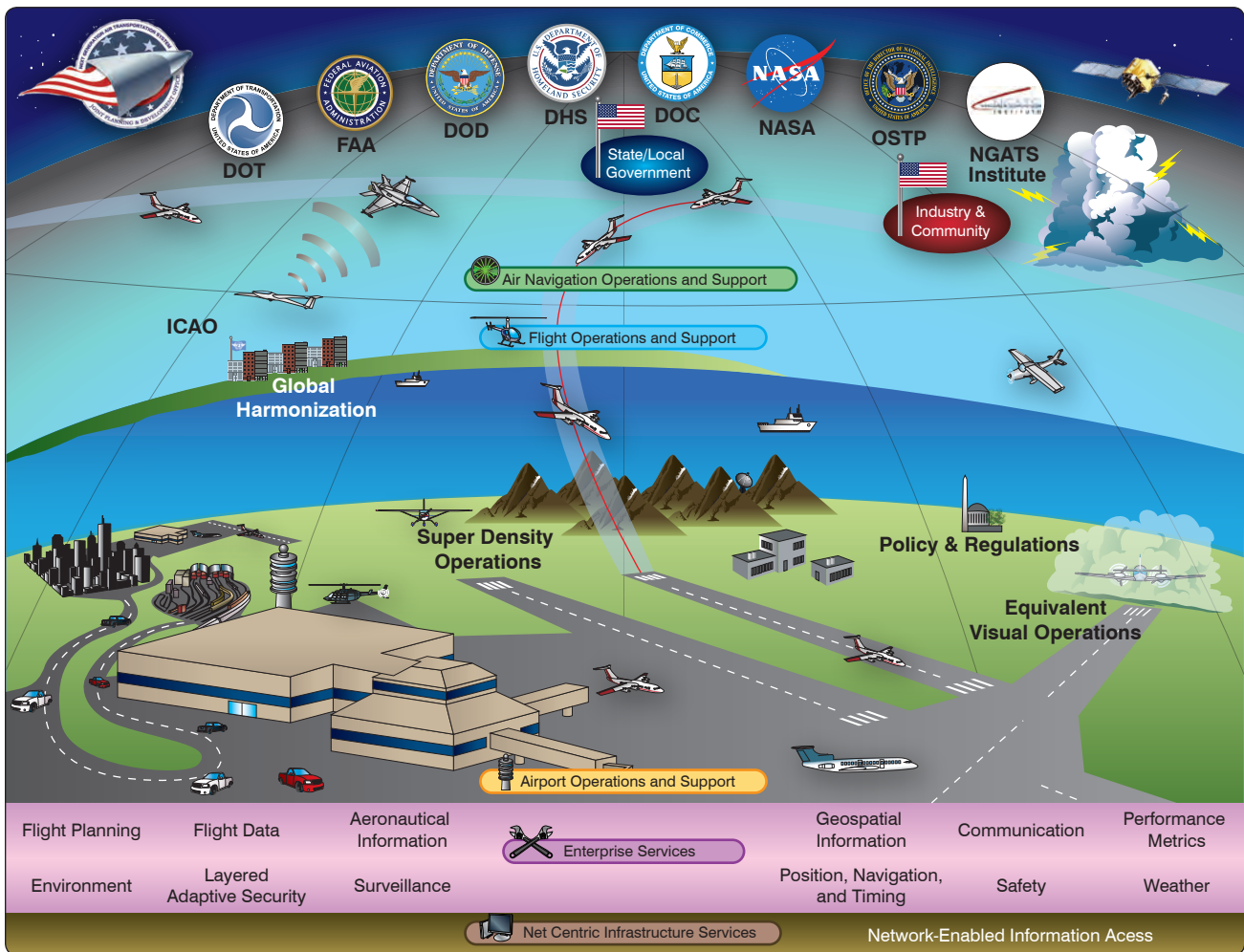


Figure 5-1. Next Generation Air Transportation System (NEXGEN) introduces new technological innovations for weather forecasting, digital communications, and networking.



Figure 5-2. Satellite-based navigation and tracking allows more aircraft to fly closely together on more direct routes.



Figure 5-3. Automatic Dependent Surveillance-Broadcast (ADS-B) systems.

ADS-B ground infrastructure is complete and ATC now uses ADS-B for aircraft tracking both in the air and on the ground at many airports.

2. System wide information management (SWIM)—will provide a single infrastructure and information management system to deliver high quality, timely data to many users and applications. By reducing the number and types of interfaces and systems, SWIM will reduce data redundancy and better facilitate multi- user information sharing. SWIM will also enable new modes of decision-making as

information is more easily accessed. [Figure 5-4]

3. Next generation data communications—current communications between aircrew and ATC, and between air traffic controllers, are largely realized through voice communications. Initially, the introduction of data communications will provide an additional means of two-way communication for ATC clearances, instructions, advisories, flight crew requests, and reports. With the majority of aircraft data link equipped, the exchange of routine controller-pilot messages and clearances via data link will enable controllers to handle more traffic. This will improve ATC productivity, enhancing capacity and safety. [Figure 5-5]
4. Next generation network enabled weather (NNEW)— seventy percent of NAS delays are attributed to weather every year. The goal of NNEW is to cut weather-related delays at least in half. Tens of thousands of global weather observations and sensor reports from ground, airborne, and space-based sources will fuse into a single national weather information system updated in real time. NNEW will provide a common weather picture across the NAS and enable better air transportation decision-making. [Figure 5-6]
5. NAS voice switch (NVS)—there are currently seventeen different voice switching systems in the NAS; some in use for more than twenty years. NVS will replace these systems with a single air/ground

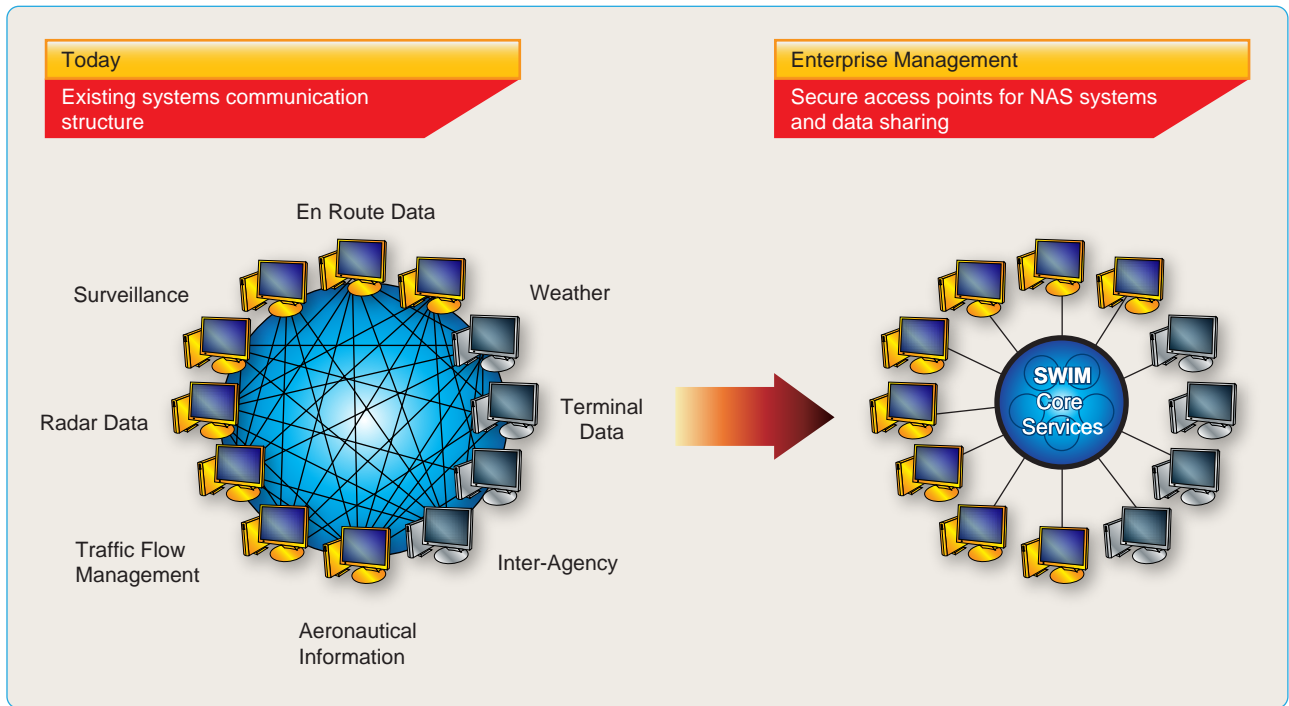


Figure 5-4. System wide information management (SWIM)—an information management system that helps deliver high quality, timely data to improve the efficiency of the national airspace.

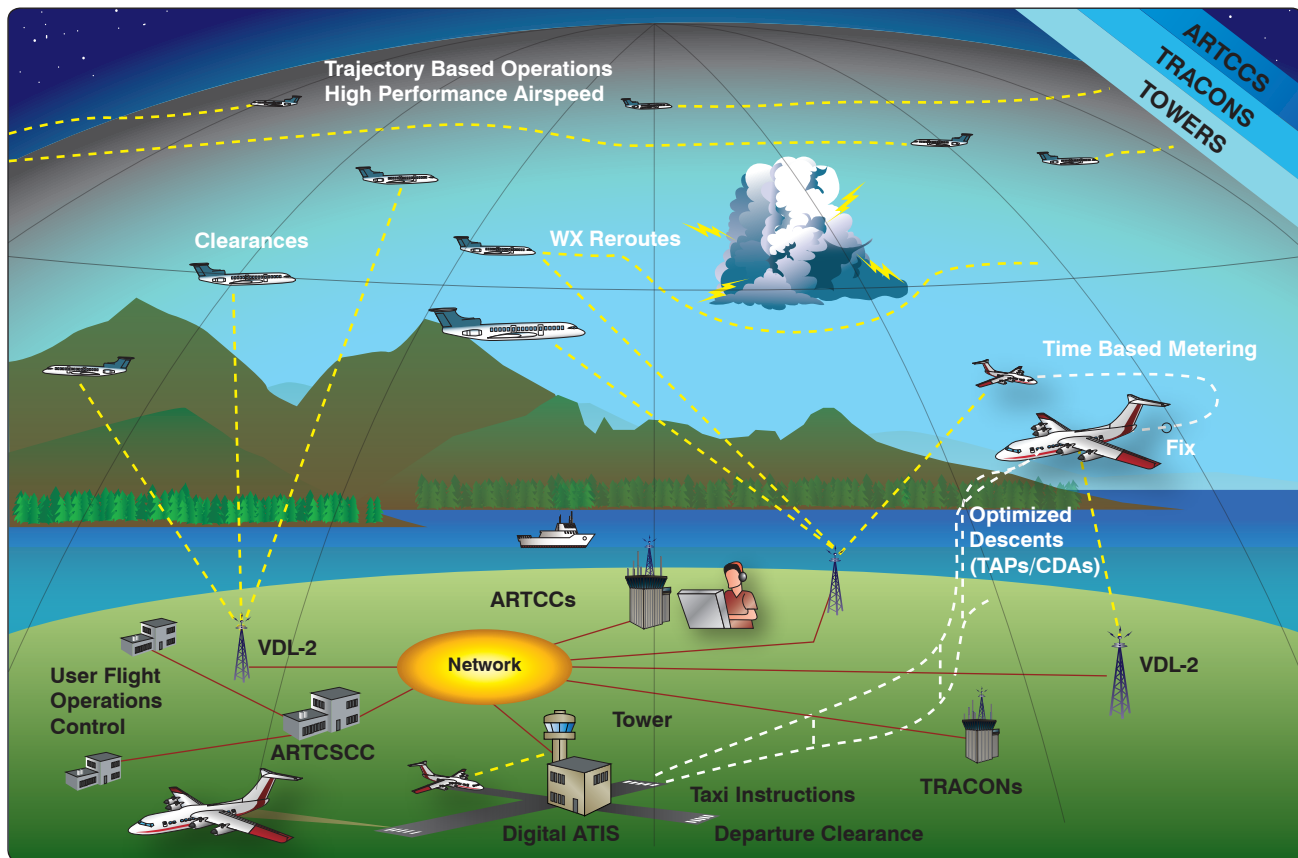


Figure 5-5. Next generation data communications provides an additional means of two-way communication for ATC clearances, instructions, advisories, flight crew requests, and reports.



Figure 5-6. Next generation network enabled weather (NNEW) provides a common weather picture across the NAS.



Figure 5-7. National airspace voice switch (NVS) will replace existing voice switching systems with single air/ground and ground/ground voice communication systems.

and ground/ground voice communications system. [Figure 5-7]

NextGen Existing Improvements

The goal of NextGen is to provide new capabilities that make air transportation safer and more reliable while improving the capacity of the NAS and reducing aviation's impact on the environment. Below is a list of some of the capabilities for operational use that have already been implemented through NextGen.

1. Starting in December 2009, the FAA began controlling air traffic over the Gulf of Mexico, an area of active airspace where surveillance was never before possible, using the satellite-based technology of ADS-B. For aircraft flying over the Gulf of Mexico, where no radar coverage is available, ATC can safely and more efficiently separate air traffic with the real-time visual representation of air traffic provided by ADS-B. It also provides pilots with

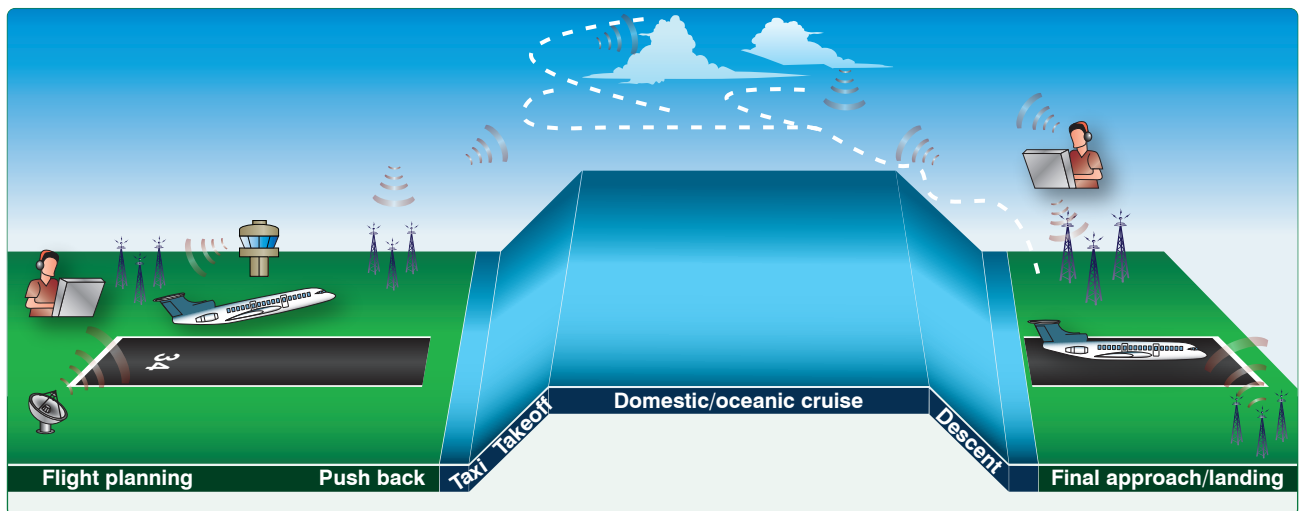


Figure 5-8. ADS-B services provide real-time precise positioning capability to ATC and ADS-B In-equipped aircraft throughout the NAS, in all phases of flight operations.



Figure 5-9. Wide Area Augmentation System (WAAS).

- more safety benefits such as improved situational awareness (SA), near real-time weather information, and additional voice communications.
- ADS-B services have been deployed to all 24 modernized enroute ARTCCs and the largest terminal radar approach control facilities in the NAS. In 2020, ADS-B will be mandatory for all aircraft in almost all NAS controlled airspace. [Figure 5-8]
- Satellite-based technologies, including the Wide Area Augmentation System (WAAS), are improving access to runways at both large and small airports. [Figure 5-9] Directions and maps have been published for more than 500 precision-like approaches enabled by WAAS. Localizer performance with vertical guidance (LPV) procedures improves access to airports in lower visibility conditions and where obstacles are present. These procedures are particularly valuable for smaller airports used by general aviation. There are now over 2,300 LPV procedures available at runways where no instrument landing system (ILS) is present.
- The Ground-Based Augmentation System (GBAS) has been approved for Category I operations and the first satellite-based system has been approved for this category of precision approach which enables instrument-based operations down to 200 feet above the surface even during reduced visibility. [Figure 5-10] GBAS was installed at Houston, Texas and Newark, New Jersey airport in 2009.
- Multilateration, a ground-based surveillance technology, is being implemented to help improve runway access. The FAA installed and is now using wide area multilateration (WAM) systems to control air traffic in Juneau, Alaska, and at four airports in Colorado. This allows air traffic to be safely separated by five miles whereas before each aircraft had to clear the airspace around the airport before the next could enter.
- New runways at Chicago O'Hare, Washington Dulles, and Seattle-Tacoma Airports opened in November of 2008, which are now beginning to have a reduction in delays.

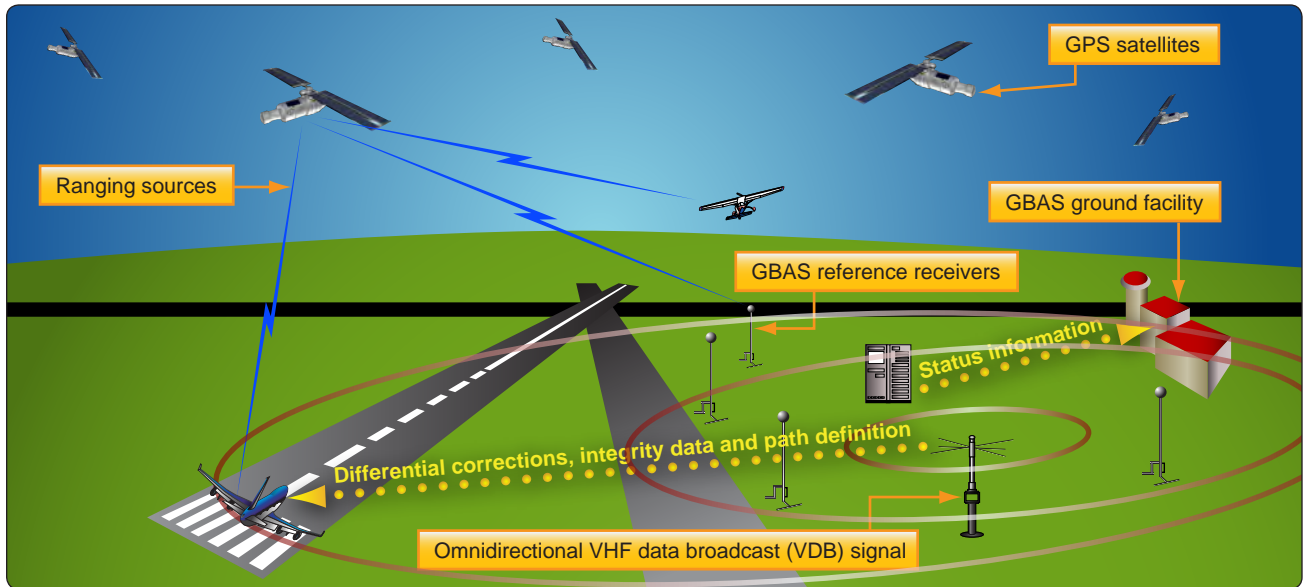


Figure 5-10. Ground-Based Augmentation System (GBAS).

Benefits of NextGen

The implementation of NextGen will allow pilots and dispatchers to select their own direct flightpaths, rather than follow the existing Victor, Jet, and LF/MF airways. Each aircraft will transmit and receive precise information about the time at which it and others will cross key points along their paths. Pilots and air traffic managers on the ground will have the same precise information transmitted via data communications.

Major demand and capacity imbalances will be worked collaboratively between FAA air traffic managers and flight operations. The increased scope, volume, and widespread distribution of information by SWIM will improve decision-making and let more civil aviation authorities participate. The impact of weather on flight operations will be reduced through the use of improved information sharing, new technology to sense and

mitigate the impacts of the weather, and to improve weather forecasts and decision-making. Better forecasts, coupled with greater automation, will minimize airspace limitations and traffic restrictions.

The new procedures of NextGen will improve airport surface movements, reduce spacing and separation requirements, and better manage the overall flows into and out of busy airspace, as well as provide maximum use of busy airports. [Figure 5-11] Targeting NextGen at the whole of the NAS, rather than just the busiest airports, will uncover untapped capacity across the whole system. During busy traffic periods, NextGen will rely on aircraft to fly precise routes into and out of many airports to increase throughput. For more information on NextGen, visit www.faa.gov/nextgen.

Head-Up Displays (HUD)

As aircraft became more sophisticated and electronic instrument landing systems (ILS) were developed in the 1930s and 1940s, it was necessary while landing in poor weather for one pilot to monitor the instruments to keep the aircraft aligned with radio beams while the second pilot divided time between monitoring the instruments and the outside environment. The pilot monitoring reported the runway environment in sight and the flying pilot completed the approach visually. This is still the standard practice used for passenger carrying aircraft in commercial service while making ILS landings. As single-piloted aircraft became more complex, it became very difficult for pilots to focus on flying the aircraft while also monitoring a large number of navigation, flight, and systems instruments. To overcome this problem, the head-up display (HUD) was



Figure 5-11. NextGen improves airport surface movements, reduces spacing and separation requirements, and better manages the overall flows into and out of busy airports.



Figure 5-12. Head-up guidance system (HGS).



Figure 5-13. HGS using a holographic display.

developed. By showing airspeed, altitude, heading, and aircraft attitude on the HUD glass, pilots were able to keep their eyes outside of the flight deck rather than have to continuously scan from outside to inside to view the flight instruments. [Figure 5-12] Collimators make the image on the glass appear to be far out in front of the aircraft so that the pilot need not change eye focus to view the relatively nearby HUD. Today's head-up guidance systems (HGS) use holographic displays. [Figure 5-13] Everything from weapons status to approach information can be shown on current military and civilian HGS displays.

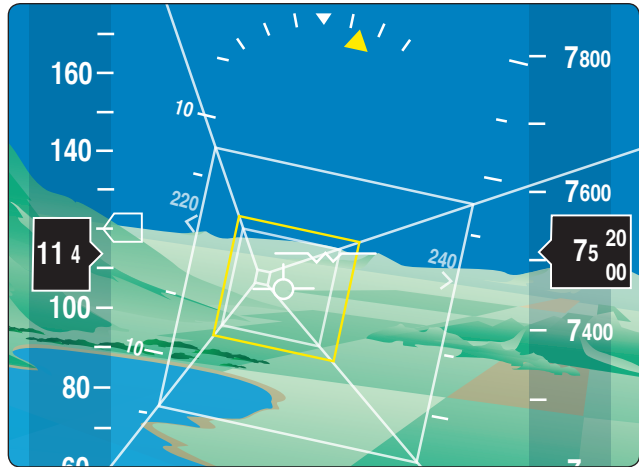


Figure 5-14. A synthetic vision system (SVS) is an electronic means to display a synthetic vision image of the external scene topography to the flight crew to assist during takeoffs, landings, and en route operations.

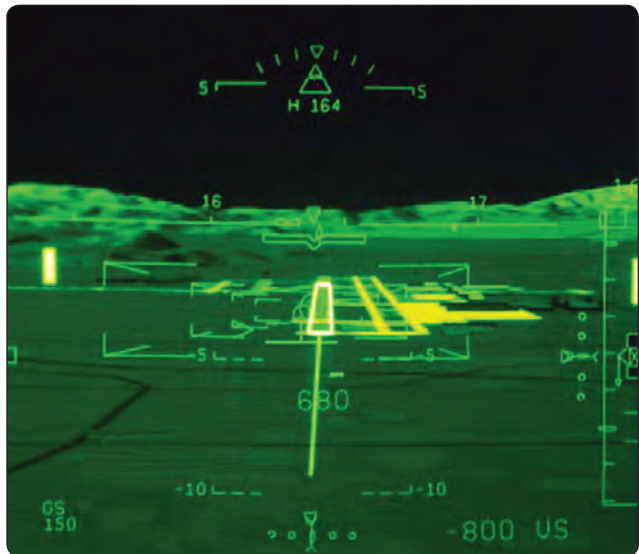


Figure 5-15. An aircraft on an approach equipped with a SVS.

Synthetic and Enhanced Vision Systems

Synthetic Vision System (SVS)

A synthetic vision system (SVS) is an electronic means to display a synthetic vision image of the external scene topography to the flight crew. [Figure 5-14] It is not a real-time image like that produced by an enhanced flight vision system (EFVS). Unlike EFVS, SVS requires a terrain and obstacle database, a precise navigation solution, and a display. The terrain image is based on the use of data from a digital elevation model (DEM) that is stored within the SVS. With SVS, the synthetic terrain/vision image is intended to enhance pilot awareness of spatial position relative to important features in all visibility conditions. This is particularly useful during critical phases of flight,

such as takeoff, approach, and landing where important features such as terrain, obstacles, runways, and landmarks may be depicted on the SVS display. [Figure 5-15] During approach operations, the obvious advantages of SVS are that the digital terrain image remains on the pilot's display regardless of how poor the visibility is outside. An SVS image can be displayed on either a head-down display or head-up display (HUD). Development efforts are currently underway that would combine SVS with a real-time sensor image produced by an EFVS. These systems will be known as Combined Vision Systems (CVS).

Synthetic Vision Guidance System (SVGS)

SVGS is a combination of flight guidance display technology and high precision position assurance monitors. The SVGS flight instrument display provides a continuous, geo-



Figure 5-18. Portable flight bag.



Figure 5-16. Enhanced and synthetic vision displayed on primary flight displays.



Figure 5-19. Installed flight bag.

spatially correct, database driven, computer-generated synthetic depiction of the nearby topography, including obstacles, and a display of the landing runway. The SVGS display may be implemented on a head down Primary Flight Display, and/or a Head-Up Display (HUD). SVGS includes additional symbology, integrity and performance monitors and annunciations that enable low visibility operations. These additional monitors assure an accurate depiction of the external scene. An SVGS differs from an EFVS in that it does not produce a real-time image of the external scene. SVGS may not be used in lieu of natural vision. SVGS is intended to be used to increase situational awareness on the straight-in final approach segment of published instrument approaches and requires Special Authorization.

Enhanced Flight Vision System (EFVS)

For an in-depth discussion regarding Enhanced Flight Vision Systems, see Chapter 4 of this handbook as well as AC 90-106 (current version).

Combined Vision System Technology

The FAA's NextGen program will transform the NAS to accommodate a projected three-fold increase in air operations in the coming decade. Technological and systemic changes are being developed to significantly increase the capacity, safety, efficiency, and security of air operations in the NAS. The FAA will continue to evaluate, standardize and regulate emerging and enhanced technologies to ensure their safe and advantageous use in the NAS. One key capability envisioned to achieve these goals is the concept of equivalent visual operations (EVO), where flight operations continue irrespective of the actual weather conditions. One way EVO might be attained is by using a combined vision system (CVS) which combines real-time EFVS imagery with a database-derived synthetic rendering of surrounding terrain, obstacles, and flight environment, to provide a virtual visual flight depiction for the pilot.

Electronic Flight Bag (EFB)

The electronic flight bag (EFB) is a system for pilots or crewmembers that provide a variety of electronic display, content manipulation, and calculation capabilities. Functions include, but are not limited to, aeronautical charts, documents, checklists, weight & balance, fuel calculations, moving maps, and logbooks.

EFB systems may manage information for use in the cockpit, cabin, and/or in support of ground operations and planning. The use of an EFB is unique to each aircraft operator and, depending on the type of operation, EFB use may require an authorization for use from the FAA issued as either an operations specification (OpSpec), maintenance specification (MSpec), or letter of authorization (LOA).

EFBs can be portable [Figure 5-18] or installed [Figure 5-19] in the aircraft. Portable EFBs may have a provision for securing in the cockpit for use during all phases of flight. The hardware device, whether it's an installed avionics display or portable commercial-off-the-shelf (COTS) device, commonly referred to as a portable electronic device (PED), is not considered to be an EFB unless the



Figure 5-29. Military operations area (MOA).

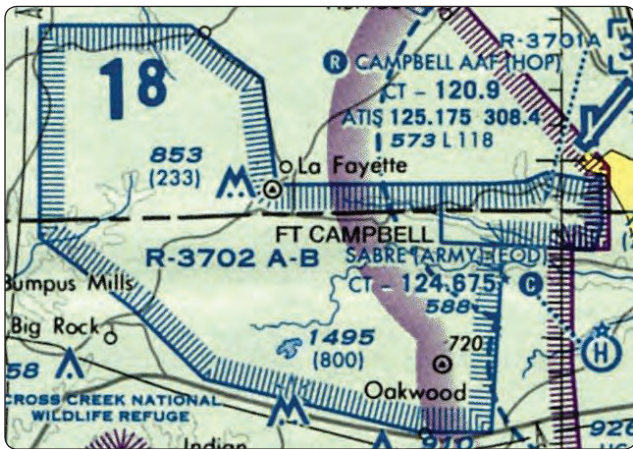


Figure 5-27. Restricted airspace.

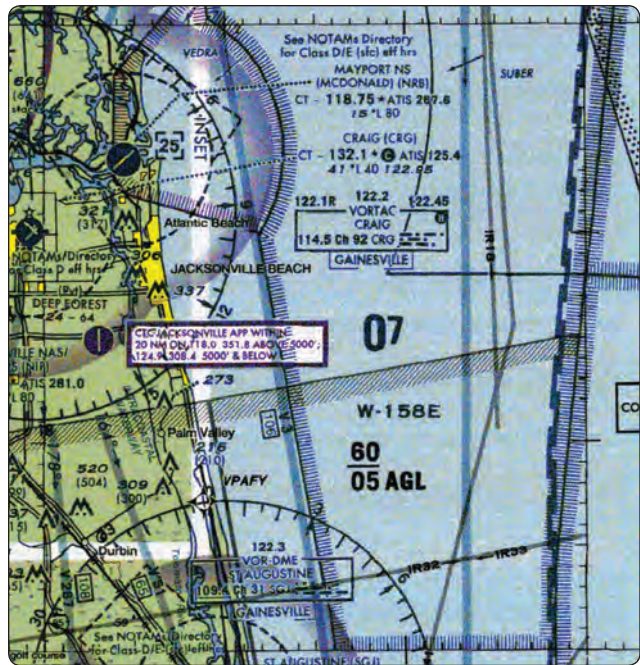


Figure 5-30. Warning area.



Figure 5-28. Prohibited airspace.

hardware device hosts and actively displays either Type A or B software application(s). A non-inclusive list of Type A and B software application examples can be found in appendix 1 and 2 of FAA Advisory Circular (AC) 120-76.

The purpose, technology, and functions for EFB use are rapidly evolving. New and advanced software applications and databases beyond traditional flight bag uses continue to be developed. The FAA has published and continues to update EFB policy and guidance to educate and assist aircraft operators interested in using or obtaining an EFB

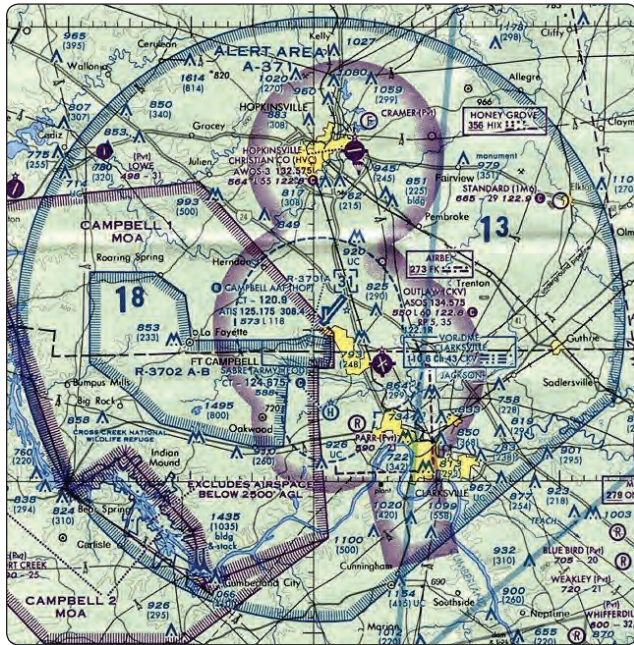


Figure 5-31. Alert area.

authorization as appropriate. The most current editions of the following FAA guidance and policy can be accessed from the FAA's website (<http://www.faa.gov>) or FAA's Flight Standards Information Management System (FSIMS <http://fsims.faa.gov>).

- AC 120-76, Guidelines for the Certification, Airworthiness, and Operational Use of Electronic Flight Bags;
- AC 91-78, Use of Class 1 or Class 2 Electronic Flight Bag (EFB);
- AC 20-173, Installation of Electronic Flight Bag Components;
- FAA Order 8900.1 Volume 4, Chapter 15, § 1, Electronic Flight Bag authorization for use; and
- FAA Order 8900.1 Volume 3, Chapter 18, § 3, Part A Operations Specifications - General

Access to Special Use Airspace

Special use airspace consists of airspace of defined dimensions identified by an area on the surface of the earth wherein activities must be confined because of their nature, or wherein limitations are imposed upon aircraft operations that are not a part of those activities, or both. Special use airspace includes: restricted airspace, prohibited airspace, Military Operations Areas (MOA), warning areas, alert areas, temporary flight restriction (TFR), and controlled firing areas (CFAs). [Figures 5-27 through 5-32] Prohibited and restricted areas are regulatory special use airspace and are established in 14 CFR Part 73 through the rulemaking



Figure 5-32. Temporary flight restriction (TFR).

process. Warning areas, MOAs, alert areas, and CFAs are non-regulatory special use airspace. All special use airspace descriptions (except CFAs) are contained in FAA Order JO 7400.8, Special Use Airspace, and are charted on IFR or visual charts and include the hours of operation, altitudes, and the controlling agency. [Figure 5-33]

The vertical limits of special use airspace are measured by designated altitude floors and ceilings expressed as flight levels or as feet above mean sea level (MSL). Unless otherwise specified, the word "to" (an altitude or flight level) means "to and including" (that altitude or flight level). The horizontal limits of special use airspace are measured by boundaries described by geographic coordinates or other appropriate references that clearly define their perimeter. The period of time during which a designation of special use airspace is in effect is stated in the designation.

Civilians Using Special Use Airspace

The FAA and the Department of Defense (DOD) work together to maximize the use of special use airspace by opening such areas to civilian traffic when they are not being used by the military. The military airspace management system (MAMS) keeps an extensive database of information on the historical use of special use airspace, as well as schedules describing when each area is expected to be active. MAMS transmits the data to the special use airspace management system (SAMS), an FAA program that provides current and scheduled status information on special use airspace to civilian users. The two systems work together to ensure that the FAA and system users have current information on a daily basis. This information is available 24 hours a day at the following link: <http://sua.faa.gov>. The website merges information for both special

SPECIAL USE AIRSPACE ON JACKSONVILLE SECTIONAL CHART

Unless otherwise noted are MSL and in feet.
 Time is local. "TO" an altitude means "To and including."
 FL – Flight Level
 NO A/G – No air to ground communications.
 Contact nearest FSS for information.

† Other times by NOTAM.
 NOTAM – Use of this term in Restricted Areas indicates FAA and DoD NOTAM systems.
 Use of this term in all other Special Use areas indicates the DoD NOTAM system.

U.S. P–PROHIBITED, R–RESTRICTED, W–WARNING, A–ALERT, MOA–MILITARY OPERATIONS AREA

NUMBER	ALTITUDE	TIME OF USE	CONTROLLING AGENCY/ CONTACT FACILITY	FREQUENCIES
P-50	TO BUT NOT INCL 3,000	CONTINUOUS	NO A/G	
R-2903 A	TO BUT NOT INCL 23,000	INTERMITTENT 0700-1900 TUE-SUN †24 HRS IN ADVANCE	JACKSONVILLE CNTR	
R-2903 C	TO 7,000	INTERMITTENT 0700-1900 TUE-SUN †24 HRS IN ADVANCE	JACKSONVILLE TRACON	
R-2903 D	TO 5,000	INTERMITTENT 0700-1900 TUE-SUN †24 HRS IN ADVANCE	JACKSONVILLE TRACON	
R-2904 A	TO BUT NOT INCL 1,800	0800-1700 (APR-AUG) 0800-1700 SAT-SUN (SEP-MAR) †24 HRS IN ADVANCE	JACKSONVILLE TRACON	
R-2906	TO 14,000	INTERMITTENT 0500-0100 †6 HRS IN ADVANCE	JACKSONVILLE TRACON	
R-2907 A	TO FL 230	INTERMITTENT 0500-0100 †6 HRS IN ADVANCE	JACKSONVILLE CNTR	

Figure 5-33. Special use airspace charted on an aeronautical chart.

use airspace and TFR making it a single comprehensive source to review airspace closure information.

The website contains two tabbed pages, List and Map, that display the scheduling and Notice to Airmen (NOTAM) data for SUAs, military training routes (MTRs), and TFRs. [Figure 5-34] By default, the List tabbed page displays all airspace types, and the Map tabbed page displays all airspace types apart from MTRs and ATC Assigned Airspaces (ATCAAs). Both the List and Map tabbed pages can be filtered to display specific data for an airspace name, type, or group. Groups include SUA, MTR, or TFR. The Map tabbed page provides a graphical depiction of scheduled airspaces that may be customized using a fly-out menu of map display options. This tabbed page also contains look-up functionality that allows a user to locate one or more airports within the map. [Figures 5-35 through 5-38]

Additional navigation features are included which allows the user to pan in any direction by dragging the cursor within the map. A permalink feature is also available that enables a user to bookmark a customized set of map layers that can easily be added to their Internet browser favorites list. Once a specific set of customized map layers has been bookmarked, a user may open that customized map display using the favorites option within their browser menu. The List tabbed page allows a user to view all SUA and MTR scheduling data and NOTAM text for a TFR. This text may be viewed for each NOTAM ID by expanding the NOTAM text section within the List grid or clicking the NOTAM ID to open a TFR Details page. The TFR Details page displays NOTAM text in a form layout for easy reading and includes a mapped image and sectional navigation map if available for the TFR.

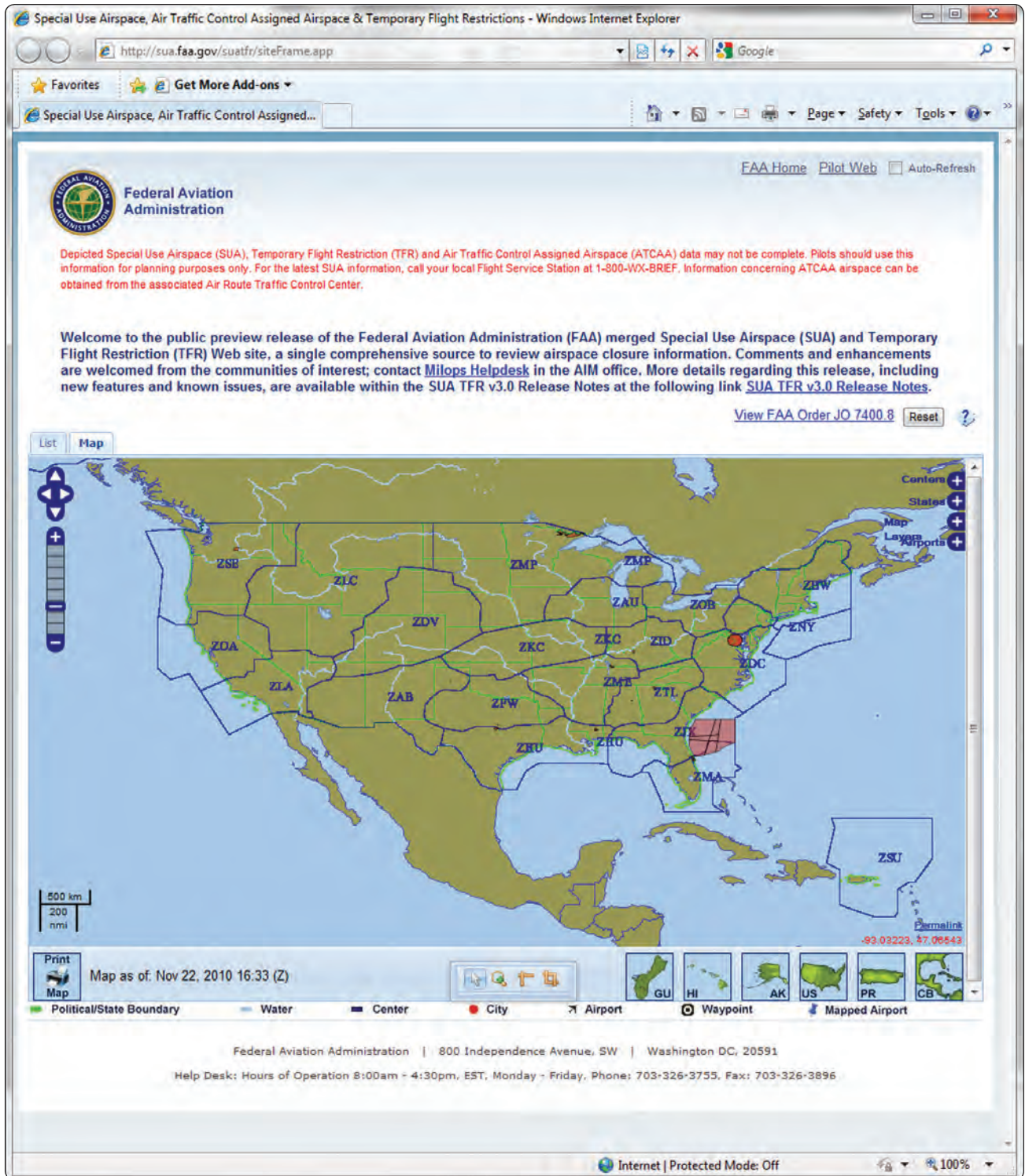


Figure 5-34. FAA website providing information for both special use airspace and temporary flight restrictions.

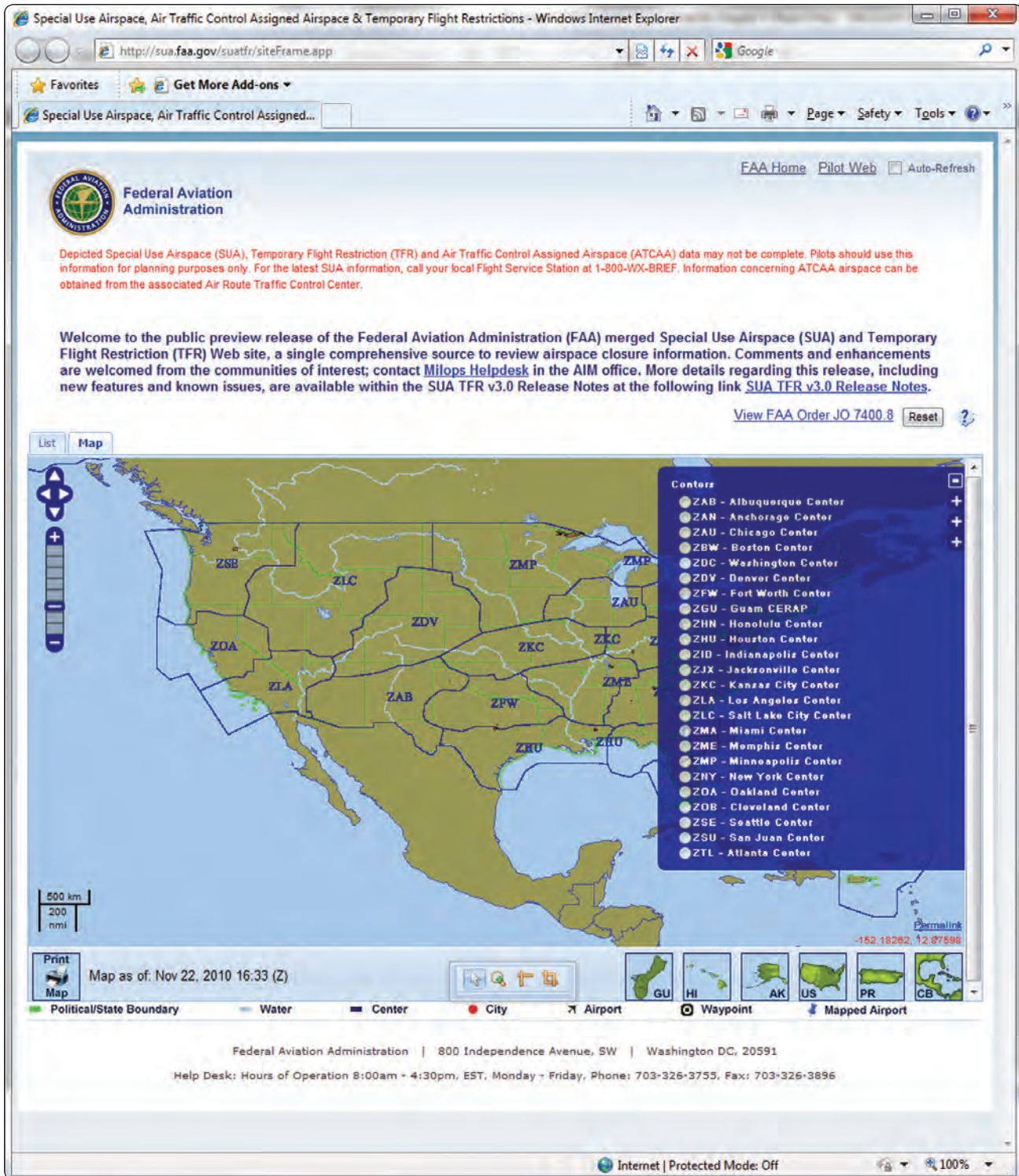


Figure 5-35. Center locations and information available to pilots through the FAA website.

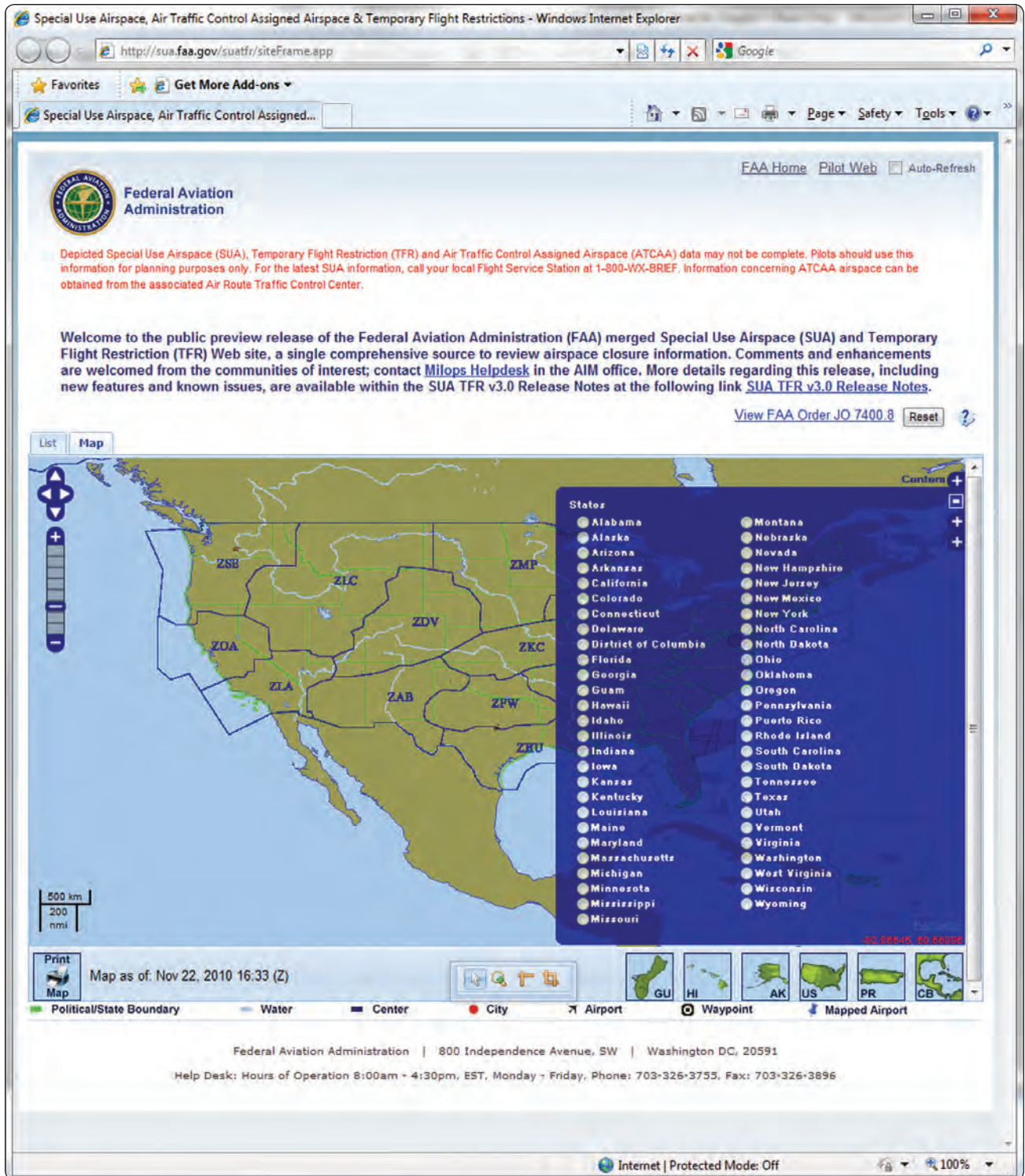


Figure 5-36. State information available to pilots through the FAA website.

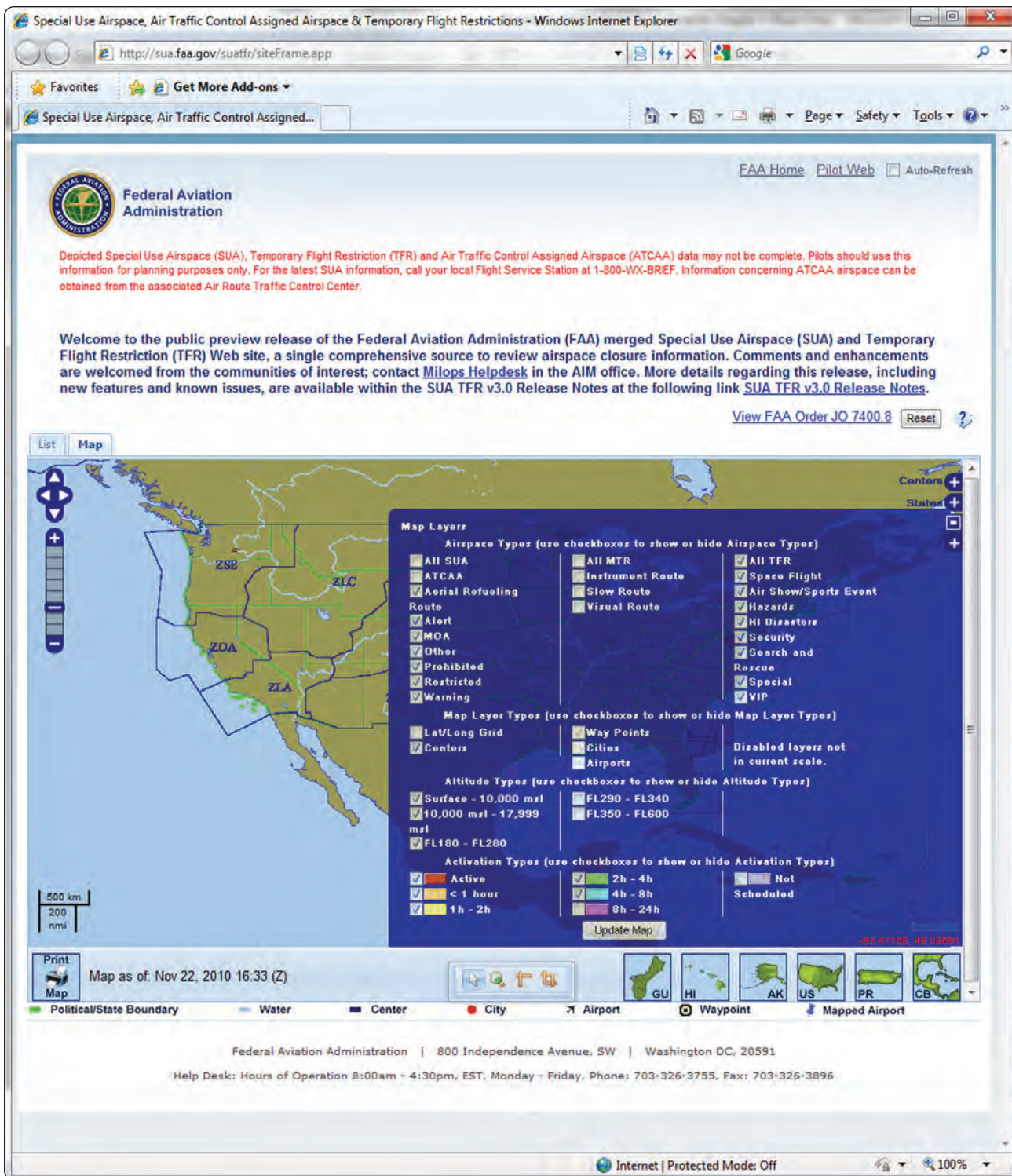


Figure 5-37. Map layer options and information available to pilots through the FAA website.

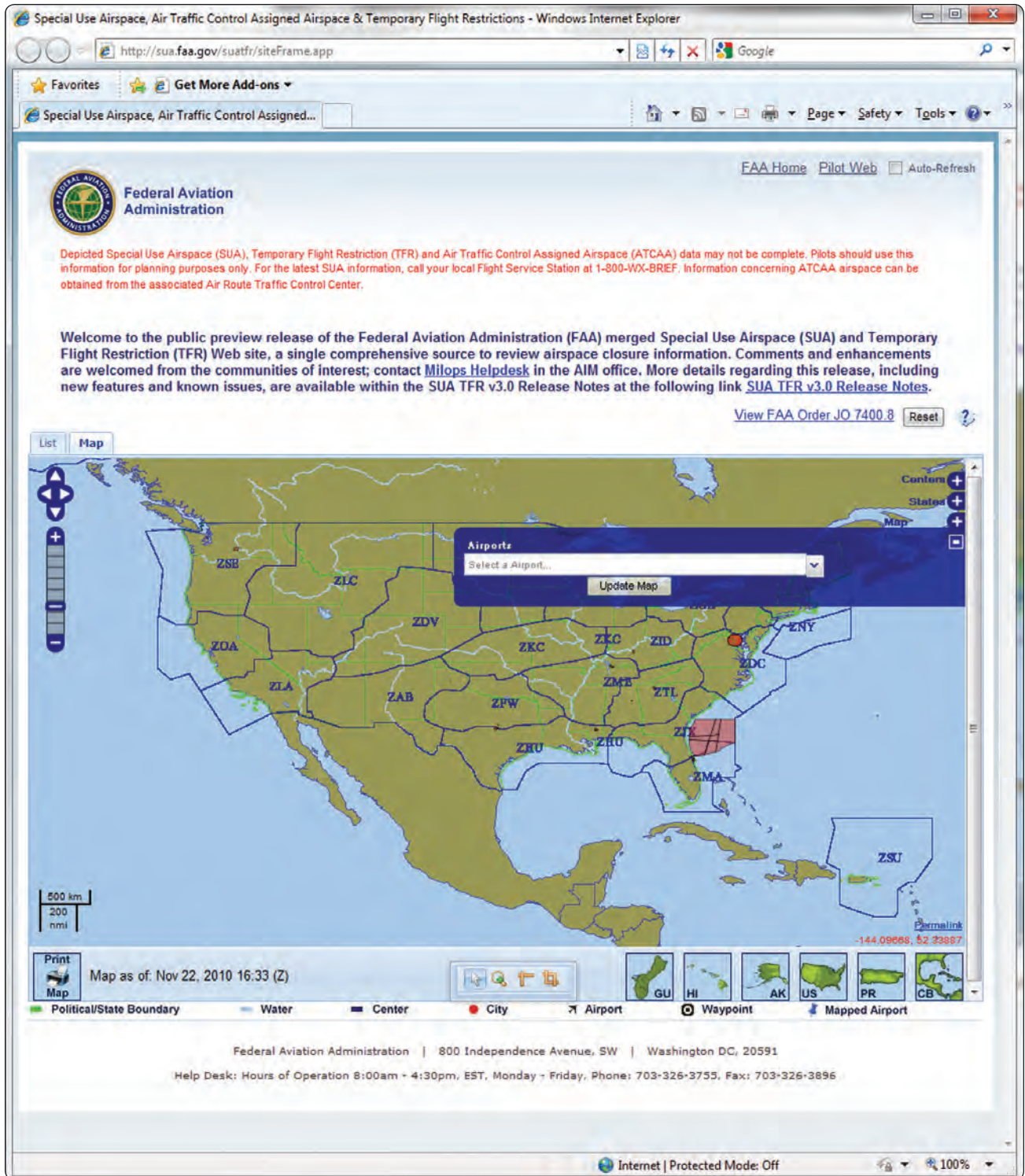


Figure 5-38. Airport information available to pilots through the FAA website.

