

## Flexible Time Units

- Weeks, days, hours and minutes can be employed as time units
- Calendar & Numeric dates can be used for input and output

## Multiple Calendars

- Maintain up to 250 calendars of unlimited length on each project
- Define normal shifts, holidays and planned overtime, each calendar is unique

## Input Method

- Arrow or Precedence techniques can be used, separately or together. Activities can be added in table format, imported in either txt, dif or csv format or directly onto the network screen. The layout is controlled by the user

## Work Breakdown

- WBS (Outliner) allows your project to be created from the top down and for costs and time to be summarised into work packages for management reports to Earned Value Management Standards either ANSI 748B and / or AS 4817:2006

## Activity Criteria

- Each activity can have a description of up to 254 characters, 3 reporting labels for Zone, Responsibility and Cost Codes. Plus and 8 Character Wildcard Sort Code and a 12 character WBS code Events can have an 8 character alpha-numeric name / number

## Sub Projects

- Can be used for breaking large projects down into smaller more manageable sections, with no limit on the number of interface links between each sub-project. Or they can be used for Multi-Project analysis

## Resource Analysis

- *Refine, level and optimise resource usage taking into account:*
  - › Complex Resource Availability
  - › Complex Resource Usage within an activity (up to 20 per activity)
  - › Analysis can be specified with either resources or time being critical
  - › Control over splitting and delaying of activities
  - › Alternate resources through Group specification
  - › Debit and Credit (Pool) resource determined by programme

## Time Analysis

- Establishes the earliest and latest dates throughout the project taking into account of any imposed earliest or latest or deadline date constraints; establish the critical activities and any network float. Total Float, Early Free Float, Late Free Float and Independent Float are calculated

## Cost Analysis

- *4 Cost rates per resource:*
  - › Not Working (Idle Time)
  - › Normal Working
  - › Normal Overtime
  - › Overload
- Input Project Costs to obtain "S" Curves of expected expenditure
- Calculates PV, AC and EV and other Earned Value Ratios, eg SPI, CPI
- Actual cost information can be added per resource, per activity or per project for ANSI 748B reporting
- Compare actual costs with Planned Costs as a table or "S" Curve.
- Accrual Periods can be taken into account for accurate cash flows
- Calculation of Earned, Recoverable and Chargeable values
- Cost Reports, Variance Reports and Cost Plans can be obtained by Zone, Responsibility, Cost Code, Work Package or Total Project

## Outputs

- Standard outputs including Bar Charts (GANTT), Histograms, pie charts, networks and tabulation, can be printed, plotted or viewed on the screen. Color is supported on all outputs. Select and sort (filter) on any or all an activities major identification fields

## Progress Reporting

- Out of Sequence progress can be reported without the need to change the network. Actual dates can only occur in the past not the future. Identify activities which are late and prevent completion on time. If activities take longer to complete than their planned dates, the duration is not extended. An Activity cannot take longer than its' duration even though the elapsed time may be greater than the duration. Compare current progress with original and baseline schedules

## Logic Transfer

- Transfer data from one sub project to another. Create logic libraries to allow rapid network construction. Merge different projects together

## Import / Export

- Data can be transferred to and from other applications in the form of DIF, CSV, ASCII Text Files as well as XML files

## Additional Features

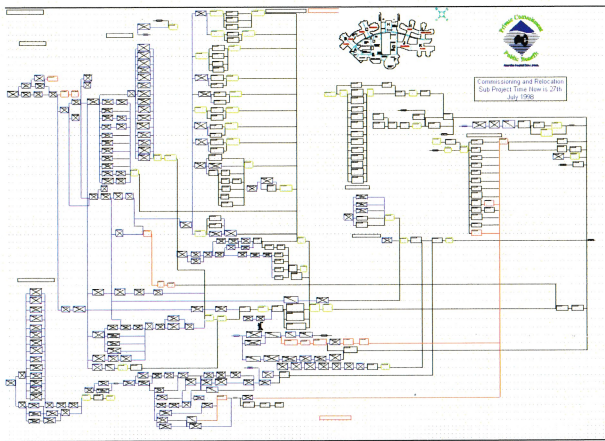
- *Other features include:*
  - › Group Resource
  - › Cumulative Resource Histograms
  - › Consumable Resources
  - › Hammock Activities, normal or sponge
  - › Overlapping Links Types, as well as FS, SS, FF and SF
  - › Progressive Feed – ladders – prevents Lag Drag
  - › Milestones for High Level Reporting
  - › Unlimited number of Preceding and Succeeding Dependencies
  - › Transmitters and Receivers allows unlimited number of independent projects to inter react across the internet and in multiple locations
  - › Attach a drawing to an activity which relates to the activity
  - › Report Writer, design, construct, customise your own reports include pictures, diagrams, logos on your reports if desired

## Support & Training

- Currently MPI runs regular training in Australia, New Zealand and the UK as well as Germany. If a client in North America has sufficient students for a course these can be arranged on site. Unlimited Support is provided for a small annual renewable fee to all users who have taken out a support contract.

## OPM

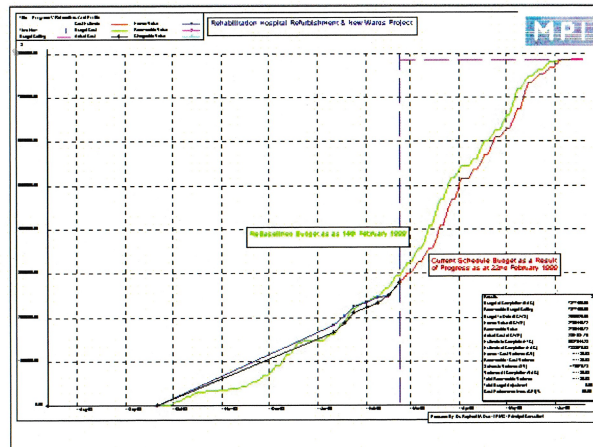
- **X-Pert is the ideal software for Organisational Project Management.**
- Generate accurate logic and dates by developing your project model in **X-Pert** and then exporting the data into your corporate product



Micro Planner **X-PERT** for Windows is even more sophisticated, has a host of new features, much higher capacities and is easier to use. Details of some of the **X-PERT**'s major features are set out below.

For additional information contact your local Micro Planner representative or Micro Planning International directly.

Max No. Of Activities / Project	15,000
Max No. Of Activities / Sub Project	1,364
Max No. Links per Activity	Unlimited
Max No. Of Sub Projects	100
Zone Labels (16 Characters Each)	250
Responsibility Labels (16 Characters Each)	250
Cost Code Labels (16 Characters Each)	250
No. Of Calendars per project	250
Max No. Of Resources per Project	200
Max No. Resources per Activity	20
Max No Work Breakdowns / Project	999



## Computer Requirements

Any computer desktop or laptop which supports Windows from V3.11 to Windows 8 - 32bit (in compatibility mode)

## Contacts

### MPI Asia Pacific

**Raphael M Dũa** raf@microplanning.com.au  
+61 418 531111

Web Site: [www.microplanning.com.au](http://www.microplanning.com.au)



# Micro Planning International

The Company, The Software,  
The Solution

For more than thirty years **Micro Planning International (MPI)** has been providing full service project management to clients worldwide. **MICROPLANNER** has always been the project management software by which others are judged. It is a high performance package that makes planning and management easy for both novice and power users alike.