



The FWMI ProLaw Connector for eCopy ShareScan OP

Process for Scanning to ProLaw via the eCopy PLConnector



Using the FWMI ProLaw Connector for eCopy Scan Stations, paper documents can be scanned directly into your ProLaw database.

The ProLaw Connector acts as an interface between your copier or scanner and your ProLaw document management system. Once the eCopy system is installed on your device, you can add the ProLaw Connector plug-in to scan directly into your ProLaw database.

A Profile screen allows you to search for Matters, Document Types, Event Classes and input document specific Notes. You can even profile to a closed matter.

Place single or multiple documents in feeder . . .

Choose the FWMI Scan to ProLaw button . . .





Sullivan Engineering

PROJECT: Site Development, Swanton Business Park

Construction Cost - Site Construction
TIMEFRAME: Winter 2003

Assumptions	Cost	Assumptions	Cost
Square Feet	7,402	Painting	5,583
Production Overhead	4.00%	Tile and Ceramic Work	35,493
General Contractor's Fee	8.00%	Cabing	18,420
Contingency	7.00%	Electrical	51,445
Construction Budget		Plumbing	34,326
		Carpentry	28,462
		FRAC	77,280
Permit	\$ 1,875	Mac Labor	3,435
Surveying/Title	4,072	Fire Alarm/Security System	9,496
Grading/Soil Treatment	33,855	Speakers	39,284
Foundation/Concrete	47,368	Site/Driveway	11,276
Masonry	43,804	Landscapeing	5,719
Utilities	24,418	Fence	18,392
Storm Sewer	14,787	Trash Removal	2,581
Finishing Lumber	23,985	Temp Utilities	3,861
Roof Trusses	29,328	Subtotal	\$666,126
Wiring	15,540		\$ 63,26
Doors	5,297	Contingency	48,323
Metal Studs	4,352	Subtotal	\$78,435
Doors and Windows	23,545		
Insulation	7,027	Production Overhead	\$ 29,337
Drywall	35,413	Gen Contractor's Fee	\$ 69,322
Trim	16,744	Total	\$872,278
Cabinets and Counters	7,289		\$106,77

Sullivan Engineering 8881 Hemmingway Park Madison, MO 60734 800-555-5478

3 of 3

Letter 1 Sided GrayScale 60% 300 DPI PDF

Settings Advanced

Your preview appears on the eCopy screen . . . Choose Next . . .

The Profile screen appears with the preview of your document. You can scroll through the pages of the document if you wish.

Enter your Matter ID or click the ellipsis to search for your matter. The search screen allows you to search by Client Sort or Matter Description as well as by Matter ID. Wildcards (%) may also be used.

The date (defaults to today) and Professional (defaults to eCopy user) can be changed.

Choose your Document Type (can also be defaulted) and Event Class (will default to any class assigned to the particular document type).

Choose Profile . . .

Scan Profiler v9 3.9 (rev. 6)

File Tools Help

Matter

Matter ID: eCopy-001

Client Sort: eCopy, Inc.

Area of Law: General

Description: FWMI PLConnector For eCopy

Document Recipients Options Matters

Date: November 7, 2005

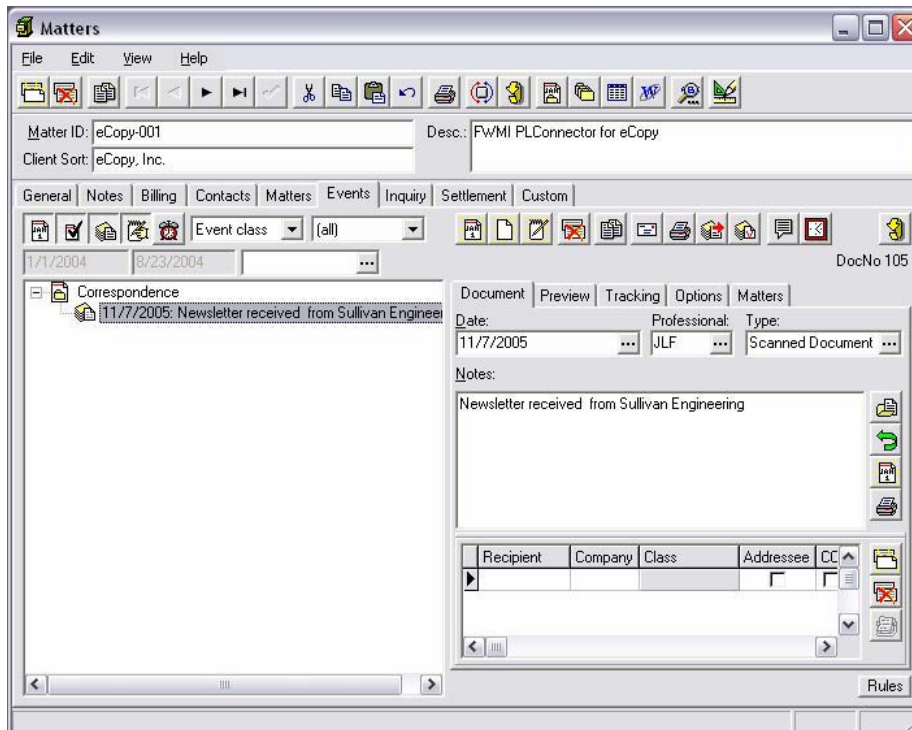
Professional: jlf Fritchman, Jerry L.

Event Type: Scanned Document

Event Class: Correspondence

Notes: Newsletter received from Sullivan Engineering

c:\documents and settings\jerry l. fritchman\desktop\prolaw scans\fwmi-jlf-quickconnect1-12072005-235628.tif (document 1 of 1)



Your document is now in ProLaw . . .

- Scan to Closed Matters
- Default the Professional to an Assigned Type
- Email to Assigned Types that a document has been profiled
- Automate the profiling process by entering the Matter ID on the eCopy screen (no search capability)

For more information or to see an online demo, please contact Ed Cox or Jerry Fritchman:

ed@fritchmanwinter.com (417) 766-5842
jerry@fritchmanwinter.com (417) 693-2090



Fritchman Winter Management, Inc.
1137 W. Sleepy Hollow Drive
Nixa, Missouri 65714
Phone: (417) 693-2090
Facsimile: (417) 725-6540