



COMPRESSION LOAD CELL

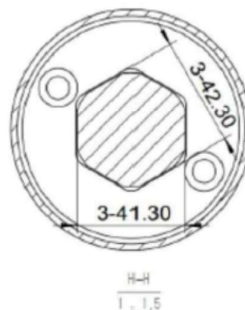
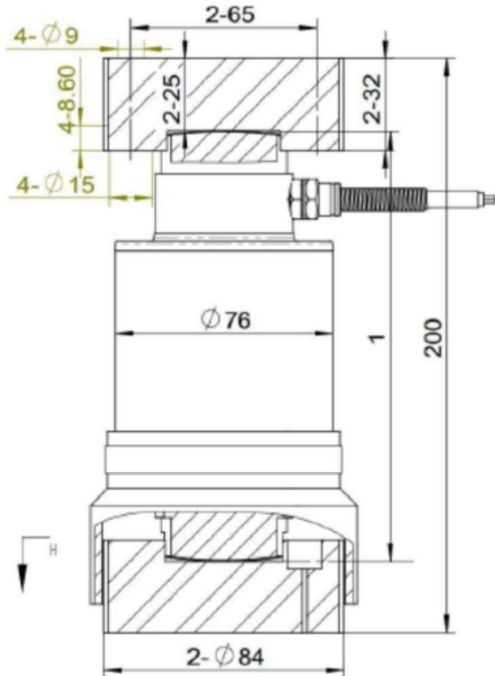
Model: GM70

Capacities: 10T to 50T

Description:

GM70 Compression type is a single column load cell available in both stainless steel & alloy steel. This product is suitable for use in road and rail weighbridges and process weighing applications. The fully welded construction ensures that this product can be used successfully in many demanding environments.

Dimensions (mm):



Specifications:

Item/data	C3	C4	C5	C6	Unit
Error	0.015	0.012	0.010	0.008	%E _{max}
Min load	0				t
Max load	10 to 50				t
Rated Output	Analog	2.0mv/V	Digital	1,000,000d	
Zero output signal	<1.0				%C _n
Linear Error	<0.01				%C _n
Repeatability	<0.005				%C _n
Creep	<0.015	<0.0125	<0.010	<0.008	%C _n
Lag Error	<0.015	<0.0125	<0.010	<0.008	%C _n
Zero temp effect	<0.01	<0.007	<0.007	<0.007	%C _n /10K
Capacity temp effect	<0.01	<0.008	<0.007	<0.005	%C _n /10K
Input resistance	775±5				Ω
Output resistance	702±2				Ω
Insulate resistance	≥ 5000				MΩ
Safety overload	150				%
Extreme overload	300				%
Work temperature	-40 ~70				°C
Recommend voltage	8 ~ 15				V(AC or DC)
Material	Stainless Steel / Alloy Steel				
Protection grade	IP68 / IP67				
Cable	φ6, 16m				
Standards	GB/T7551-2008, equivalent to OIML R60				

