

# Industrial Weighing Automation



**mokal**®  
CORPORATION

*setting the standard*

[www.mokalcorporation.com](http://www.mokalcorporation.com)

## ***Who We are...***

**We are system integrators that offer solutions for various weighing applications such as Tank / Silo weighing, Gas cylinders weighing, Checkweighers, Batching systems, Belt weighers, Weigh feeders, Crane weighing, Logistics weighing, Platform weighing and many more.**

**With our skilled technical team, we are prepared to deliver a customized system to meet your specific requirements. Our specialization involves providing tailored solutions for a range of applications including Gas cylinder weighing, Tank/Silo Weighing, Checkweighers, Crane weighing and more.**

**In the intricate and constantly evolving world we live in today, reliability and quality stand out as essential factors when choosing an industrial equipment supplier. By teaming up with us, you can expect top-notch product quality, prompt deliveries, competitive pricing, outstanding customer service, and ongoing innovation – all pivotal elements for your business success.**

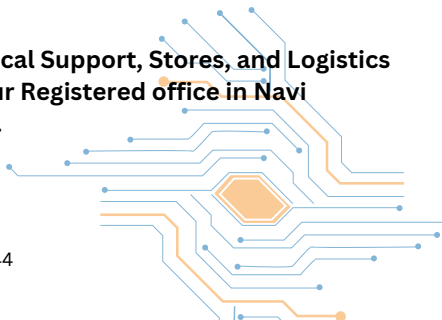
**Our comprehensive range of weighing instrumentation offers you a quality assured, cost effective and purpose designed solution to a diverse range of industrial and process weighing applications.**

**Our Sales, Marketing, Technical Support, Stores, and Logistics departments are based at our Registered office in Navi Mumbai, Maharashtra, India.**

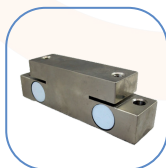
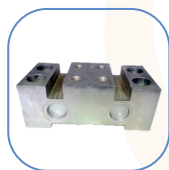
For more details:

Email ID: [sales@mokalcorporation.in](mailto:sales@mokalcorporation.in)

Contact: +919967777828 ; +918451904444



## Analog / Digital Load Cells for Industrial Weighing



Our load cells are utilized in various sectors for process weighing, batching plants, and different industrial scales such as weighbridges, tank/silo weighing systems, belt weighers, weigh feeders, bagging machines, check weighers, loss-in-weight systems, elevators, cranes and other weighing applications.



For more details:

Email ID: sales@mokalcorporation.in

Contact: +919967777828 ; +918451904444

## Weight Controllers/Indicators for Process Industry



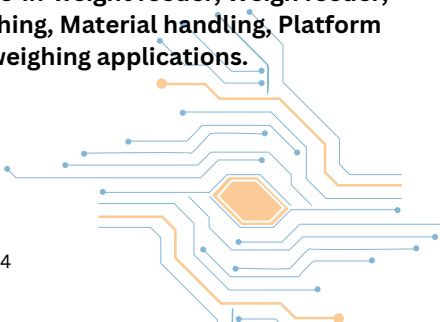
**Weight Controllers for Tank / Silo weighing system, Check weigher, Belt scales, Weighbridges, Loss-in-weight feeder, Weigh feeder, Bagging machine, Crane weighing, Material handling, Platform scales and other weighing applications.**



For more details:

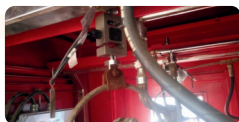
Email ID: [sales@mokalcorporation.in](mailto:sales@mokalcorporation.in)

Contact: +91996777828 ; +91845190444

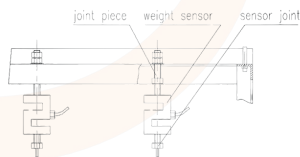
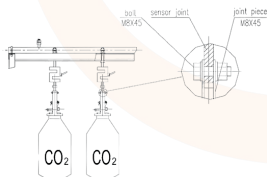




## Gas cylinders Weight Monitoring System



At MOKAL CORPORATION, we specialize in offering solutions for continuous weight monitoring of gas cylinders. We have developed our Multi-channel weight controller, which allows you to link up to 16 cylinders load outputs, with each cylinder's weight being displayed on a single screen. This system alerts you if any cylinder's weight drops below the set value.



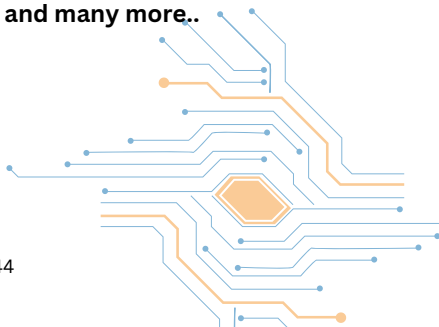
**Application Areas:** Fire suppression systems, Oil & gas industry, Beverage industry, Pharmaceutical & chemical manufacturing, Air conditioner manufacturing and many more..



For more details:

Email ID: [sales@mokalcorporation.in](mailto:sales@mokalcorporation.in)

Contact: +919967777828 ; +918451904444



## Tank / Silo / Hopper Weighing System



Load cells capacity up to 500T,  
with suitable Mounting Assembly



Junction Boxes for 2, 4,  
6 & 8 load cells connection



Din rail/Panel Mount Weight Controllers  
with multiple output options

**Our expertise lies in offering solutions for Tank/Silo Weighing systems.  
Our customized solutions cater to various industries such as Food,  
Cement, Dairy, Chemicals, Paint and others.**



For more details:

Email ID: sales@mokalcorporation.in

Contact: +919967777828 ; +918451904444

## Logistics Weighing

### FORKLIFT WEIGHING SCALES

Our Forklift Weighing Scale is the perfect solution for the industries looking to improve work efficiency, precise material turnover, real-time weight monitoring and reduce security risks. Our scale easily integrates with the forklift's hydraulic system, allowing for real-time weight monitoring during lifting operations.

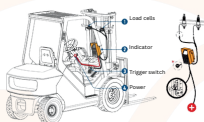
Forklift weighing scales enhance operational efficiency, improve inventory management, and promote workplace safety in industries such as logistics, manufacturing, and warehousing.



**GM - A Series  
SMART FORKLIFT SCALE**  
General Accuracy up to 1%



**GM - H Series  
SMART FORKLIFT SCALE**  
High Accuracy up to 0.2%



Scale



Smart Indicator

### BLUETOOTH BEAM SCALES

Lightweight and compact design for easy transport and storage. With use of the Android app, it is easy to operate and check the weight on your Android phone. Constructed with robust materials to withstand frequent use and various environments. High precision in measuring weight, often with fine adjustment capabilities.



Wireless connection  
Bluetooth model



High Precision Load cell  
Accuracy 0.1%

### Portable Weighing Pads

Lightweight and easy to transport, making them suitable for use in various locations. Designed to provide precise weight measurements, accuracy ranges from 0.1% to 0.5% for static & up to 2% for dynamic weighing. Built to withstand the heavy loads and rough conditions they may encounter. Simple to set up and operate, often requiring minimal training. It finds application in various industries for vehicle weight compliance, fleet management, weigh-in-motion, toll stations, Aircraft weighing, on-site weighing, tractors weighing in agriculture field and many more.



For more details:

Email ID: [sales@mokalcorporation.in](mailto:sales@mokalcorporation.in)

Contact: +919967777828 ; +918451904444

## *High Speed, High Accuracy Checkweighers*



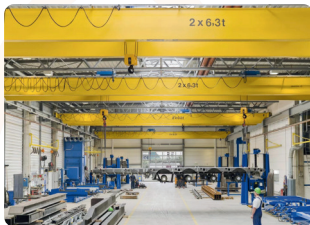
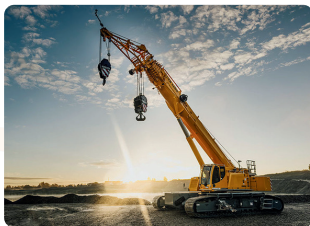
- Compact & reliable structure design
- Highest accuracy up to  $\pm 0.05g$ , High throughput rates
- Weighing range starts from  $<200gms$  up to  $100Kg$
- More than 100 prescription setting, weighing statistic & analysis.
- Automated rejection control with air jets, pushers or drop-down conveyors
- Ethernet, USB, or wireless options for integration with factory networks, allowing for real-time data exchange and remote monitoring.
- Applications in Food, pharma, chemicals, machine tools, textile and many other industries

For more details:

Email ID: [sales@mokalcorporation.in](mailto:sales@mokalcorporation.in)

Contact: +919967777828 ; +918451904444

## ***Crane Maintenance Services***



**To ensure optimal performance of your cranes and equipment on different projects and sites, proper maintenance is essential. Recognizing the impact downtime can have on your business, we offer maintenance services to keep your equipment running smoothly. Our team of skilled professionals provide comprehensive maintenance solutions for your cranes and equipment. From mechanical upkeep and part replacements to inspections, and structural damage assessments on booms, we offer a complete range of services. With our expertise spanning various industries, we have refined our skills and capabilities to elevate your projects.**

For more details:

Email ID: [bhushan@mokalcorporation.in](mailto:bhushan@mokalcorporation.in)

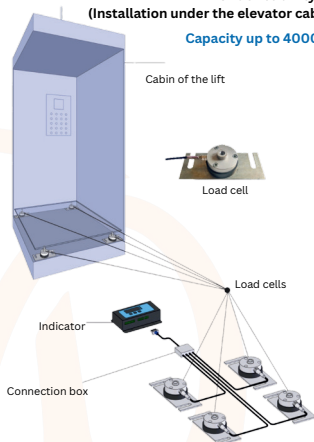
Contact: +919967815741 ; +918451904444

## Elevators Weighing Kit



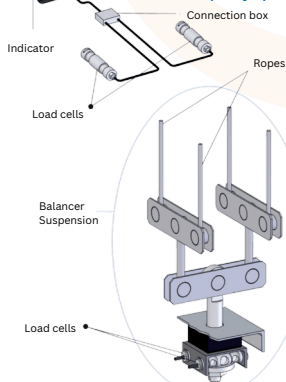
### Under Cabin type (Installation under the elevator cabin)

Capacity up to 4000Kg



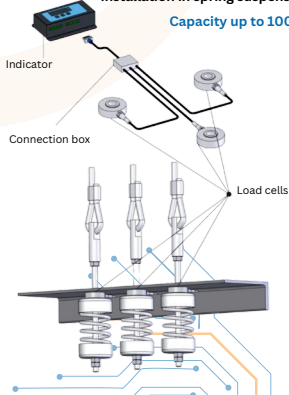
### Into springs type (integrated into balancer suspension)

Capacity up to 2000Kg



### Under springs type (system with load cells from 3 to 8 pieces, installation in spring suspension )

Capacity up to 1000Kg



For more details:

Email ID: sales@mokalcorporation.in

Contact: +91996777828 ; +91845190444





Office Address: 201, Sai Niwas Apartment, Plot no. 54/55, Sector 22, Kamothe, Dist. Raigad, Maharashtra - 410209, India

✉ [sales@mokalcorporation.in](mailto:sales@mokalcorporation.in)

☎ +91996777828 ; +918451904444