

DECEMBER

20

23

Course Proper Gold Coast Turf Club

THE OFFICIAL
PUBLICATION OF THE
AUSTRALIAN RACECOURSE
MANAGERS ASSOCIATION



COURSES FOR HORSES



Combining the **civil engineering imperatives** for racing facilities with the necessary **infrastructure expertise**



DALTON
CONSULTING
ENGINEERS

melbourne . geelong . brisbane

Civil Engineers &
Project Managers

dceng.com.au



I trust everyone has had as good a holiday period as possible. Racing is another of those industries that only stops for one day, and it actually gets busier over that period, so I hope many could make the most of it.

As we enter a new year I don't believe it is necessary to look at new year resolutions, but I believe it is a great opportunity to look back on the past year and reflect on what went well, and maybe what didn't go so well. We all must continue to strive for improvement and further development. We must always be on the lookout for ways we can be more innovative and further improve the wonderful professionalism that is shown by all.

There are always continual changes in this industry, and I am sure that 2024 will be no different. I hope that this new year turns out the way that everyone desires.

Lindsay Murphy

Maximise your turf's performance with **FoliMAX**

Nuturf's FoliMAX range of professional-grade liquid fertilisers have been meticulously crafted for you to achieve the best racing surface possible.

With over 20 unique formulations, featuring ammonium-stabilised technology, methylene urea, multiple forms of potassium, natural chelates and a complete range of stimulants, there's a FoliMAX solution to help your turf thrive in any situation.

Unlock the true potential of your surface with FoliMAX for healthier, greener and more resilient turf.



Contact your Nuturf rep or scan the QR code to discover the FoliMAX range
sales@nuturf.com.au | 1800 244 300

ARMA

COMMITTEE

and office bearers

NSW - Lindsay Murphy (Chairman & Treasurer)
0417 744 252 lindsay-murphy@outlook.com

QLD - Murray Weeding
0414 923 301 mweeding@sctc.com.au

WA - Brock Neeling
0437 445 132 bneeling@perthracing.com.au

Administration - Wendy Synan
0423 622 542 admin@racecoursemanagers.com.au

VIC - Martin Synan (Deputy Chairman & Secretary)
0407 819 027 martin.synan@mvr.net.au

SA - David Shepherdson
trackmanager@mountgambierracing.com.au

TAS - Matthew Reggett
0418 864 061 m.reggett@tasracing.com.au

Events - Liam Smith
0412 711 387 events@racecoursemanagers.com.au

**GET TO WORK.
ALL DAY, EVERY DAY.
WORKMAN® UTX SERIES**



Image shown with optional accessories

The Workman UTX is a 4-wheel drive utility vehicle built to stand up to the toughest tests without compromising performance. With true commercial-grade components, the highest payload in its class, and a proprietary speed control system, it's designed for the rigors of a long work week. It has the muscle to haul a ton while still maintaining the ability to regulate speed and sound in sensitive areas. Every Workman UTX comes standard with power steering, LED headlights, turn signals, brake lights, and a spray-on bed liner.

For more information call 1800 356 372 or contact your Toro Area Sales Manager
toro.com.au

[/toroaus](https://www.facebook.com/toroaus) [/toroaus](https://www.instagram.com/toroaus) [/showcase/toroaustralia](https://www.linkedin.com/showcase/toroaustralia) [YouTube /toroaustralia](https://www.youtube.com/toroaustralia)

TORO

- Renovations are in full swing and nearly at their halfway mark. Hopefully the weather continues to be on our side so renovations can be completed on time.
- Spring Carnival was a success again this year and the weather was kind to those hosting meetings. Most major race meetings had good attendances with no major incidents.
- Finally, we bid farewell to track manager Mitch Makepeace of the Swan Hill Jockey Club. Mitch will be starting his own business and we wish him luck. Mitch's replacement is Jonty Chaproniere, who started in early December.



Victorian Region Meetings:

Throughout the month of November and December region track manager meetings have been conducted throughout the state. The host clubs were Horsham, Echuca, Warrnambool, and Cranbourne. Topics that were discussed were general updates on the industry, Raceday information and upcoming projects at clubs around the state.

Also attending these meetings were Metropolitan Track managers Tim Bailey, Martin Synan and Liam O'Keefe. It was great to see everybody at these meetings with more to come in early 2024, followed by our yearly conference.



Ellerslie Racecourse

Auckland Thoroughbred Racing has been given the green light for racing to return to Ellerslie with 60 horses galloping on the surface across 12 heats on Monday 11 December. Senior jockeys, Opie Bosson, Craig Grylls and Joe Doyle were on course for the first time since the StrathAyr track has been completed. All comments from the experienced jockeys were positive and they were excited about the return to Ellerslie. New Zealand's premier thoroughbred racecourse has been undergoing a gradual 'return to racing' testing plan in conjunction with New Zealand Thoroughbred Racing (NZTR). Racing will resume at Ellerslie Racecourse on 14th January 2024.



Regional Field Days

Another round of Regional Field Days have taken place at Ellerslie, Awapuni and Wingatui. The field days were well attended and, as always, it provided a good opportunity for Racecourse Managers to catch up and discuss issues with each other and prominent sponsors.



Annual Renovations

Several annual renovations have taken place during the spring. Those returning to racing have already seen the benefits and the racing surfaces have come back stronger. Below are some pictures of the Riccarton Racecourse which will return to racing on the course proper 18 Jan, after an aggressive renovation straight after Cup Carnival late November.



Engineering Investigations, Design, Consultation & Construction Support Service

- Geotechnical Engineering
- Environmental Engineering
- Sports Field Consulting & Laboratory Services
- Sand Track Material Selection
- Racetrack Tunnel & Lighting Tower Geotechnical Investigations
- Dams, Swimming Pool, Horse Walkers – Construction Advice





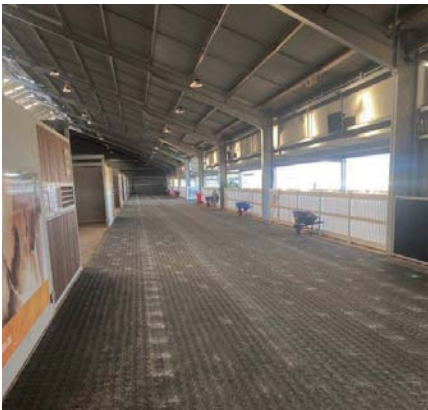
Stables



Sandown Race Track - Ramp



Wash Bays



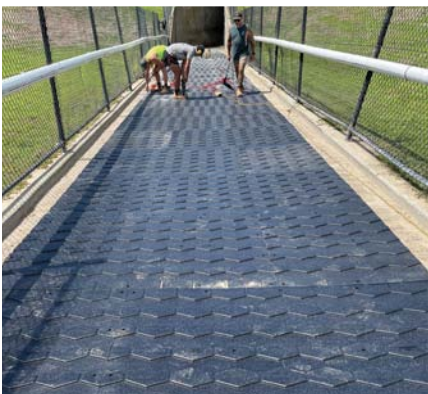
Murray Bridge
Turf Club - Walkway

A safe, dust-free and forgiving surface is essential to the welfare of horses and trainers!

SureFoot® Matting provides a surface which ensures comfort and protection to horses and handlers, and in turn promoting confidence, and ultimately creating the very best environment for enhancing the performance of horses.



Wyong Race Club -
Pool Entrance / Exit



Cranbourne Training
Centre - Tunnel



Parade Rings



Horse Walkers

“enhancing animal welfare under foot”

Sales Hotline: 1800 255 943
Email: sales@rpsindustries.com.au
www.surefootmat.com.au



KEEP YOUR MEETING ON TRACK

THE WORLD'S BEST RACING SURFACE



WE USE REFLEX® TECHNOLOGY

A StrathAyr Track is an extremely resilient and safe all weather natural grass racing surface. Proven in iconic venues throughout Australia and Asia, a StrathAyr Track is the only solution that benefits from the unique benefits of ReFlex mesh element technology.



CONSULT | DESIGN | CONSTRUCT
STRATHAYRSOLUTIONS.COM
1800 622 455

Townsville Turf Club (TTC) Fibretrack

Following on from the installation of a Fibretrack at Ipswich Turf Club, Racing Queensland (RQ) has continued with the capital improvements program for thoroughbred training tracks installing a second Fibretrack at Townsville Turf Club (TTC). Martin Collins Australia (MCA) have installed the new Fibretrack which replaced the existing sand track.

In addition to the new training surface, drainage system to track has been added, a completed irrigation system installed and new inside outside Mawsafe running rails.

The new Fibretrack will improve thoroughbred training for the 100 horses that will use this track daily. Fibretrack will be completed and in use by 23 December 2023.



PROGRAMMED Property Services



Save Time With A Customised Property Services Package

Free yourself to focus on your core business.

Tailor Programmed's end-to-end solutions to meet your specific building, property, infrastructure and maintenance needs, and see how easy it is to free up time and release resource constraints and cut costs.

Our Services include:

- ▶ Grounds
- ▶ Building projects
- ▶ Signage
- ▶ Electrical
- ▶ Painting
- ▶ Audio Visual

Gold Coast Turf Club Tracks Update

Course Proper

The redevelopment of the course proper at Gold Coast Turf Club (GCTC) was completed through the last turf sod being laid August 2023. Project Control Group PCG) required 16 weeks development period for the washed Kikuyu turf prior to the first race meeting. During the development period an extensive agronomic program was implemented to ensure the Kikuyu developed into a healthy and robust sward of turf. The agronomic plan included proactive insecticide, fungicide, aeration, and top-dressing applications combined with an aggressive nutritional program. Kikuyu responded very well enabling “track testing” within 12 weeks from last turf sod being laid.

“Track testing” commenced with a series of gallops where riders used the inside, middle and outside of track. Second phase of testing entails a series of Jump Outs/Barrier Trials at different running rail positions. After each phase of testing RQ, GCTC and Stewards gathered feedback from riders on track surface in areas of –

- Track rating,
- Surface consistency,
- Track firmness,
- Turf height
- Moisture content
- Super elevations

The new Kikuyu surface successfully passed the “track testing” schedule. RQ and GTC agreed to conduct the first race meeting on 9 December 2023. This race meeting was a success with positive feed-back from all stakeholders.

Course Proper is now being prepared for the 2024 Magic Millions Carnival with the first race meeting “The Wave” being held on 6 th January 2024 and the second race meeting 2024 Magic Millions Race Day to be conducted on 13 th January 2024.





FLEMINGTON MEMBERS LAWN



FLEMINGTON RACE TRACK



FLEMINGTON MOUNTING YARD



SEYMOUR RACING CLUB



CAULFIELD RACE TRACK



CRANBOURNE TURF CLUB



P | 1800 010 110
ancoturf.com.au

A GREAT TRACK RECORD

Anco has a proud history in Thoroughbred Racing. Our track resurfacing projects include Flemington, Caulfield, Sandown, Mornington, Werribee, Gawler. More recently, Anco supplied the turf for the Cranbourne Turf Club and Seymour Racing Club.



VP3 VAC

Dust-free with a lush green colour - plus consistent, optimal track conditions.



Consistent, optimal track condition is essential for horse tracks. Perrot has the right solution for achieving this, regardless of whether the surface of the track is made from plastic granules, sand or turf.

For more information call 1300 130 898 or contact your Toro Area Sales Manager
toro.com.au

[/toroaus](https://www.facebook.com/toroaus) [/toroaus](https://www.instagram.com/toroaus) [/showcase/toroaustralia](https://www.linkedin.com/showcase/toroaustralia) [YouTube /toroaustralia](https://www.youtube.com/toroaustralia)



ARMA MEMBERSHIP 2024



Renewals will be sent out
28th of January

CONTACT ADMIN@RACECOURSEMANAGERS.COM.AU
FOR MORE INFORMATION



SPOTLIGHT ON

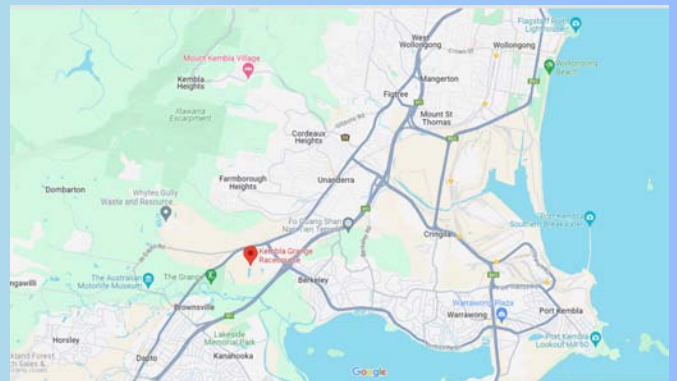
Illawarra Turf
Club



Race meetings held for the original Illawarra Turf Club date back to 1834 on the site of the current Wollongong Golf Club ~100kms south of Sydney NSW. The current site at Kembla Grange was purchased early in the 20th century and the race track was designed and constructed identical to Royal Randwick. The 2200 metre track is 25 metres wide and has a straight of 420 metres and was managed by various organisations until the current Illawarra Turf Club was formed and commenced racing at Kembla Grange on December 18th 1976.

“The Gong”

First run in November 2019 as part of the NSW spring racing carnival, Wollongong’s richest horse race is run over 1600 metres with \$1,000,000 in prize money. Detonator Jack took the prize on November 25th 2023 with a few familiar ARMA faces in the crowd!



*if you would like your Racecourse featured in the magazine, please contact admin@racecoursemanagers.com.au



A Fence For Life!



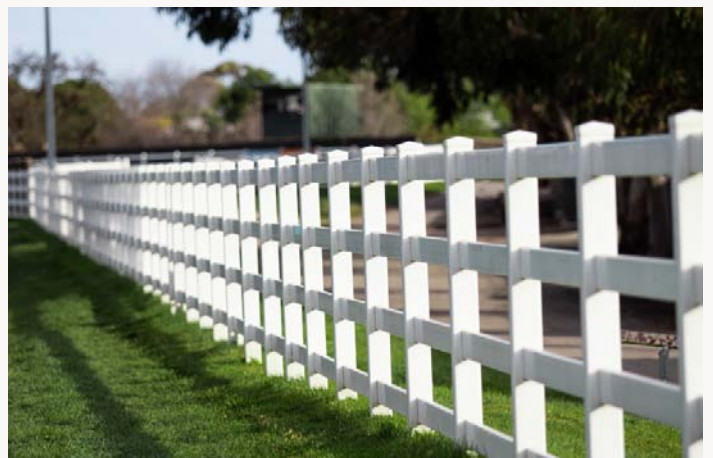
Range of Designs

- + Stable Yards
- + Lane Dividers
- + Lane Ways
- + Crowd Barriers
- + Holding Bays
- + Running Rail



Resilient & Durable

A Polvin fence withstands the harshest weather conditions without rotting, rusting or discolouring. Many years from now your Polvin fence will still look as good as the day you installed it.



Contact us for further information

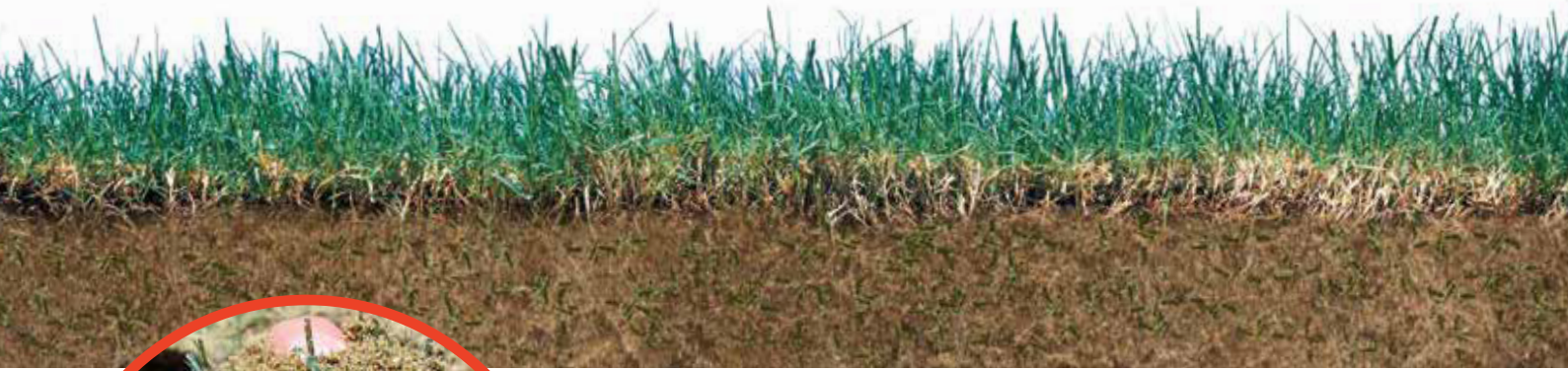
1800 339 675

 sales@polvinfencing.com.au

www.polvinfencing.com.au

 www.facebook.com/polvinfencing

EVERGREEN RACING SURFACES



“Fibre reinforced technology for the horse racing industry..”

Eagle Farm RC

Townsville RC

Racing.Com Park Pakenham



Stability

Increases sand stability across various moisture contents

Integration

Grass roots grow thru fibre which is reinforced throughout sand rootzone, no layering or free sand layer at surface

Safety

Improved racing surface traction & consistency for horse & rider

Load Bearing

Increased load bearing capacity without increasing compaction

Agronomy

Uncompromised agronomic performance & cultural practices

Drainage

All weather capacity, engineered to cater for high rainfall events

Evergreen Racing Surfaces (ERS) are reinforced turf profiles designed specifically for the horse racing industry. ERS systems use fibrillated polypropylene fibres within the sand profile that look and perform like a natural grass root. ERS provides enhanced sand stability, impact resistance, load bearing capacity and dramatically improved drainage rates.

ERS Services include:

Full Track Reconstructions
Ready to Race Turf Replacement
Renovations & Conversions
Horse Crossings

Call us today

Wayne Davey 0419 378 130
Chris Chapman 0487 100 233



www.evergreen.com.au



EVERGREEN RACING SURFACES