

D.L.P.S.A

Duck Lake Peninsular Shores Association



WANT TO KEEP UP ON HAPPENINGS, NEEDS & STUFF FOR SALE?

Join the Facebook site
“[The Daily Duck](#),” and
download the app,
Nextdoor.

The Daily Duck was started as a way to connect with residents and neighbors on Duck Lake Peninsula. Over the past summer some of these posts have become negative. Pictures, “lost and found”, “in search of” posts, community gatherings and events will be allowed. Advertisements, complaints about speeders, golf carts, children, etc. will not. There are other avenues for complaints, namely local law enforcement. Let’s enjoy our beautiful community, Let’s remember to be kind to one another on The Daily Duck.

UPCOMING EVENTS CALENDAR

- **October 28, 2023 | Trunk or Treat & Bonfire | 5 PM - 7 PM**
Schworm Park
- **October 31, 2023 (On or around) | Tennis Court Net Removal**
- **November 4, 2023 (On or around) | Removal of Boat Ramp Dock**
- **November 19 & 26, 2023 | Toys for Tots Collection | 10 AM - 12 PM**
DLPSA Pavilion at Schworm Park
- **December 16, 2023 | Holiday Celebration | 6 PM**
Schworm Park
- **February 24, 2024 | Winter Meet & Greet Bonfire | 3 PM - 6 PM**
Schworm Park
- **April 1, 2024 (On or around) | Re-install Tennis Court Net**
- **April 15, 2024 (On or around) | Install Boat Ramp Dock**
- **May 18, 2024 | Spring General Meeting | 5 PM**
DLPSA Pavilion at Schworm Park
- **May 31, 2024 | Annual Membership Payments Due**
- **June 1, 2024 | Peninsula Garage Sale | 9 AM - 4:30 PM**
DLPSA Provides Record-Eagle Ads May 30 & 31
- **June 20, 2024 | Summer Solstice Meet & Greet | 8 PM**
Sunset Beach Park
- **July 4, 2024 | Peninsula Parade & Duck Lake Boat Parade**
- **July 20, 2024 | Annual DLPSA Picnic | 3 PM - 9 PM**
DLPSA Park - This is a community event open to all Peninsula residents & their guests. Thanks to Scott Hocking, Tom Fabatz & Jeff Beaton
- **September 7, 2024 | Annual Meeting | 5 PM**
DLPSA Pavilion at Schworm Park
- **September 22, 2024 | End of Summer (Equinox) Meet & Greet**
6 PM - 8 PM Sunset Beach Park
- **October 31, 2024 | (On or around) Tennis Court Net Removal**
- **November 4, 2024 | (On or around) Removal of Boat Ramp Dock**

A LETTER FROM THE PRESIDENT

Hello Duck Lake Peninsula Residents, your Board of Directors are pleased with the continued progress being made, on your behalf, to improve this wonderful community so many of us call home.

One of our key responsibilities, as your Board, is to seek opportunities to meet frequently and get to know each other. We've introduced a number of new events this past couple of years. If you have any ideas on opportunities or events that allow us time to get together, please don't hesitate to bring them forward to any of your Board Members or myself. Please refer to the Upcoming Events Calendar, on page 1 of this newsletter, or visit our website, www.DLPSA.net, for information on future opportunities to get together for the balance of this year and 2024

One of a couple of concerns this past year has been the use of our facilities key by inactive members, in other words those not paying their annual dues and/or individuals that do not reside on the Peninsula. We had issues with this at both the tennis court and the boat launch. We'd like to assure that everyone be good stewards of their facilities key and not lend it out to inactive members or non-residents. If your neighbor is asking to borrow your key it's likely because they haven't paid their annual dues. You're certainly welcome to have your key used by your family members, visitors or guests but it is expected you would accompany them when the key is being used. We are looking at means to enforce the unauthorized uses of keys.

Another area of concern is overnight parking or vehicles blocking access to our various parks around the Peninsula. If you live near these parks, please do not use these areas for overflow parking for your guests and especially not overnight guests.

We can all help to keep the Peninsula streets safe for our resident walkers and cyclists. The number one complaint we receive from our community members is people exceeding the 25 mile per hour speed limit. I realize we have a number of visitors, commercial vehicles and/or construction workers coming onto the Peninsula and we can only hope they obey the speed limits. However, everyone that lives here can certainly do their part by being careful not to exceed the speed limit, especially at sunrise & sunset. Please refer to the Pedestrian Safety article in this newsletter.

If you haven't already done so, I would encourage you to provide us with your email address. We will use this to provide important information and updates on what's happening on the Peninsula. We promise not to inundate you with multiple emails but keep you informed with typically less than one email per month.

I certainly encourage and welcome any thoughts, comments or suggestions any community member might have to improve life on the Peninsula. You can reach out to me directly at schonhoffken@gmail.com, call me at (313) 300-2132 or contact anyone on the Board. If you'd like to remain anonymous you can forward your thoughts to our P.O. Box (344) or place a note in my mailbox. I can assure you all thoughts or suggestions will be reviewed by the Board and acted on accordingly.

Thank you for your time in reviewing our Fall Newsletter. On behalf of myself and our Board Member team, we look forward to making your time on the Peninsula special and enjoyable. I think we can all agree this is a phenomenal place to live and the more we can do to have a positive experience as a community the better.

FALL CLEAN-UP

The leaves and pine needles are falling. For all our new residents and others, there are a number of options available to you in this regard. You can contact independent landscape services to help with your needs. They can do a complete clean-up or simply pick-up your leaves, pine needles and small yard waste you collect and deposit near the street. Another option is taking your leaves or grass clippings (only) to the Green Lake Township Compost Facility, which is located on Youker Road just 2.7 miles from County Road 633. If you have questions on using this facility you can call (231) 276-9329. Previously you had to acquire a key from Green Lake Township to open the gate but lately the gate has been open. Your attention in this matter is greatly appreciated by all community members, especially your immediate neighbors. **PLEASE**, do not blow or deposit leaves or yard waste into the lake. It simply is not a good practice in preserving the high-quality of our waterway.

YOUR BOARD MEMBERS



President: Ken Schonhoff
3956 Peninsular Shores Drive
(313) 300-2132 | schonhoffken@gmail.com



Vice President: Paul Johnson
4076 Peninsular Shores Drive
(269) 767-1826 | pljohnson14723@comcast.net



Treasurer: Kathy Bickel
4019 White Birch Drive
(231) 645-6476 | katbic55@gmail.com



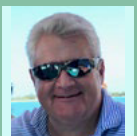
Secretary: Cynthia Howard
3961 Central Park Drive
(231) 342-9764 | cynton@gmail.com



Maintenance Chair: David Marsh
3754 Peninsular Shores Drive
(810) 444-1400 | dmarsh1@chartermi.net



Liaison/Website: 'Ken'neth Chamberlain
3970 Peninsular Shores Drive
(517) 881-5594 | kenc@fnwusers.com



Newsletter: Jeff Beaton
7858 North Shore Court
(231) 492-5449 (home) | jbeaton@wmsdist.com

RESIDENT DIRECTORY?

Please check out our website! www.DLPSA.net

WELCOME NEW RESIDENTS!

- **Robert & Sheila Lieber**
4130 East Shore Drive



IMPORTANT!

Posted speeds of 25 miles per hour need to be observed. Please report any speeders to the Grand Traverse County Sheriffs Department. Help keep our residents walking or biking on the Peninsula streets safe.



VISIT YOUR WEBSITE DLPSA.NET

The website contains valuable information for our community members including, but not limited to, resident directories, the Events Calendar, Park locations, former Newsletters, etc. We've recently added contact numbers for essential individuals, as might be needed. If you have a contact number you'd like added here please bring it to our attention. Big thanks to Ken Chamberlain for his efforts and expertise in maintaining this website.



Wiffle Ball Team, Winners!



Wiffle Ball Team, Adults!



Last Day of Summer Meet & Greet.

PARK BENCHES MEMORIAL OPPORTUNITY

We have a number of benches at our various parks and along the canal that are available to have a Memorial Plaque placed on them. The cost is \$400 for each memorial and will be used to acquire additional benches, if deemed necessary. If you are interested in this opportunity, please contact Kathy Bickel or Ken Schonhoff. If you would like to see some examples of this, there are benches at Sandy Shores Park, North Beach Park, South Beach Park and near the Tennis Court that contain memorial plaques.

DUCK LAKE PENINSULA MERCHANDISE

A number of you have been asking when we might have new Duck Lake merchandise available for sale. I'm pleased to advise we are looking at a new web-based system for this purpose. The idea would be to allow community members the opportunity to visit the website and place orders for various merchandise including, but not limited to, t-shirts, sweatshirts, jackets, vests, hats, visors, beach towels, etc. We'll hopefully offer a couple of varying logo treatments as well. One thing we'd like to see is the inclusion of "Peninsula" on the merchandise. As previously requested, if you have a suggested logo treatment you'd like to have considered please forward it to schonhoffken@gmail.com. Stay tuned for further information in this regard.



Peninsula Veterans, 4th of July Parade Grand Marshals.

WANT TO RESERVE THE PARK PAVILION?

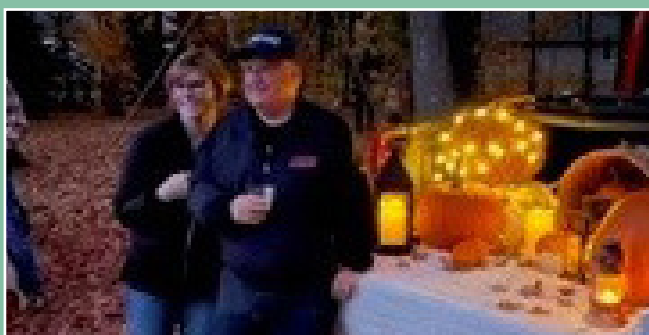
To reserve the Schworm Park Pavilion look at the "General Information" page on the www.DLPsa.net website for open dates. Contact Ken Chamberlain at (517) 881-5594 or email kenc@fnwusers.com.

NEED A FACILITIES KEY?

If you need a facility KEY, contact Paul Johnson (269) 767-1826, or his wife Cathy (269) 639-7999. Please leave a message if no one answers. Paul's address is 4076 Peninsular Shores Drive. Keys are 1 per lot with paid dues. New Duck Lake floating key fobs are available, just ask.

TRUNK-OR-TREAT

The 2023 Trunk-or-Treat event will be held Saturday, October 28, from 5-7 pm. We are doing this so our youngest community members can still participate in the traditional trick-or-treat activities on the actual Halloween holiday, Tuesday, October 31. Please plan to be in Schworm Park no later than 4:45 pm to get set-up. Cars, trucks, golf cars, etc., are welcome. And, decorating your vehicle, as well as wearing costumes is encouraged. We feel this is a convenient and safe way for our ghouls and goblins to experience the joys of Halloween and collect their treats. We will also have a nice bonfire going during this event. So please plan to meet everyone in the Park. And, if you also want to hand out candy on Halloween simply keep your porch light on or light-up your driveway. If there are any questions on this please reach out to Kathy Bickel or myself.



HOLIDAY “LIGHTS-UP” CONTEST

We are pleased to advise we are going to hold our annual Peninsula “Lights-Up” Contest again this year. However, we are going to change the rewards. As opposed to gift cards for first, second and third place we are simply going to recognize first place on an Awards Plaque that will be placed in the Pavilion. This plaque will recognize the first-place winners the past couple of years, the 2023 winner and years moving forward. This is simply a means to encourage and reward our community members for lighting up for the holidays, as voted on by their neighbors. There will be ballots made available via e-mail and upon request. The ballot box for placing your votes will be at the entrance to the boat launch. Voting will begin after Saturday, December 9 and conclude on Sunday, December 17. Let’s plan to get together on Saturday, December 16, in Schworm Park, for a bonfire and celebration of the holiday season. There will be a hay ride around the Peninsula to review the holiday lights displays and to cast your votes. Let the friendly competition begin for the enjoyment of all others!



TOYS FOR TOTS

We will once again be sponsoring a Toys-for-Tots collection drive. We’ll be collecting new, unwrapped, toys on the following dates and times at the Pavilion in Schworm Park.

Sunday, November 19, 10:00 am - 12:00 pm

Sunday, November 26, 10:00 am- 12:00 pm

We’ve spoken with our resident expert, Terri Gauthier, who has indicated the need for infant, as well as teenage items. For the teenagers, make-up, cologne sets, nail care, etc., are a good idea. Of course, cash or gift cards would be helpful so that the United States Marine Corps Reserve volunteers can secure items most needed after the collections. A couple of items not needed are clothing or stuffed animals.

If you’re not available to drop-off your donations during one of the times above, you’re welcome to drop them off to Terri at 3995 White Birch Drive, Ken Schonhoff at 3956 Peninsular Shores Drive or anyone of your Board Members.

Living or spending time on Duck Lake Peninsula certainly gives us plenty to be thankful for so we thought this provides a good opportunity to do something nice for those less fortunate. If you’re out shopping those Black Friday deals don’t overlook the opportunity to make this Christmas a little more special for someone in need. If there are any questions, please contact one of your Board Members or visit [ToysforTots.org](https://www.ToysforTots.org).



SHORT-TERM RENTALS

Short-Term rentals continue to be a concern and potential nuisance for many of our community members. It should be noted that such activity is in violation of both Section A & C of our Protective Covenants. Section A of the Protective Covenants says “lots shall be used exclusively for residential purposes.” Section C states “no commercial enterprise or business of any nature shall be carried on upon any lot nor shall anything be done thereon which may be or become an annoyance or nuisance to the neighborhood.”

KNOW THE BASICS OF PEDESTRIAN SAFETY

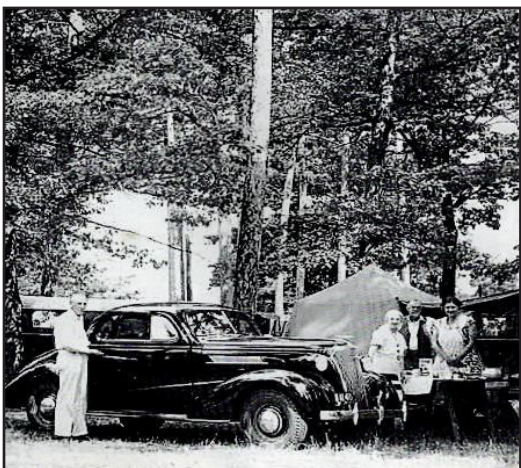
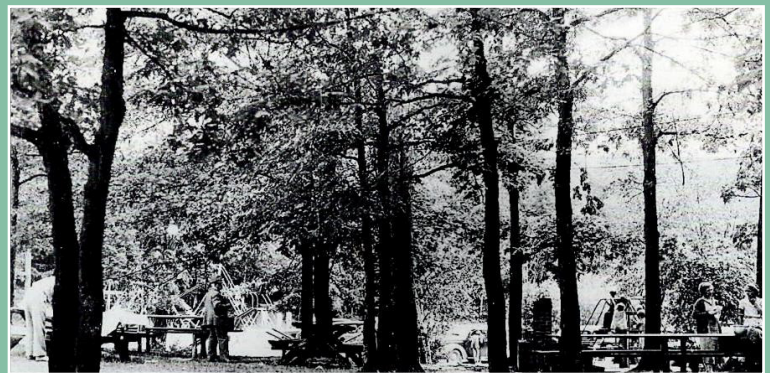
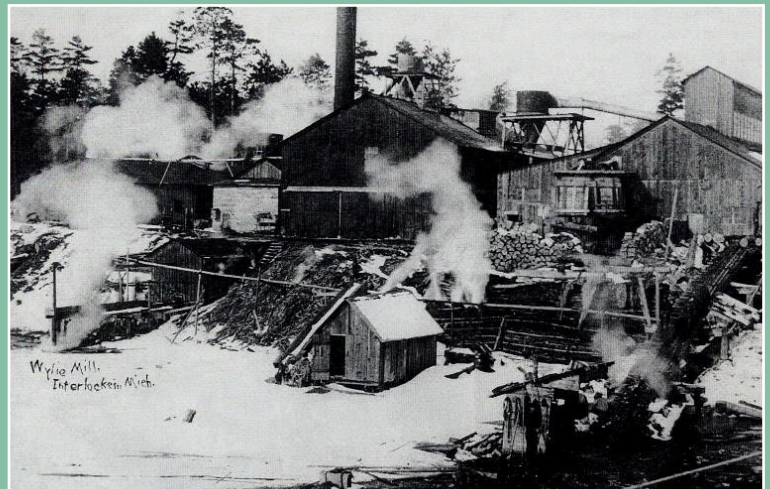
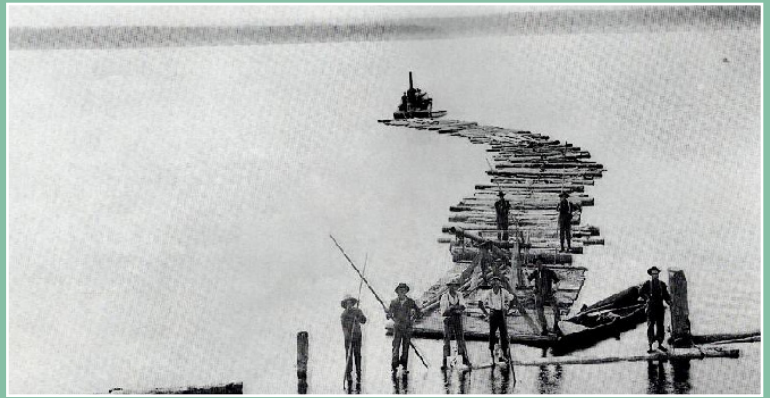
1. Always walk facing traffic and try to be as far away from the traffic as possible.
2. Be as visible as possible, especially during sunrise and sunset where glare can be problematic for drivers. Wear bright clothing during the day and reflective materials or lights/flashlight at night.
3. Keep alert at all times. Don't be distracted by electronic devices/cell phones that take your eyes or ears off the road or your surroundings.
4. Watch for vehicles in all directions including those turning left or right at our intersections.
5. Never assume a driver sees you as there's a good chance they're not paying full attention. Try to make eye contact with drivers to assure you are being seen.
6. Watch for vehicles entering or exiting driveways.
7. Be mindful of the many golf cars traveling our streets.
8. Avoid anything that might impair your abilities or judgment when enjoying our streets.
9. If you see habitual speeders bring them to the attention of the Grand Traverse County Sheriff's Office by calling (231) 995-5000.

JOINING THE GREEN LAKE & DUCK LAKE ASSOCIATION

We are very fortunate to have the Green Lake and Duck Lake Association (GLADLA) protecting our lake. And, equally fortunate to have three residents on the Peninsula on the Board of Directors of this Association, including their new President, Paul Johnson. The GLADLA regularly tests water quality, monitors and treats the lakes for invasive weed species and provides community outreach & environmental education on water quality. Of course, funding is always an important aspect of maintaining a successful association. Please consider becoming a GLADLA Member with an annual donation of \$25. To become a member, visit their website at www.GLADLA.org. As a member you'll receive periodic newsletters on important related watershed information.

BLAST FROM THE PAST

Long before the Interlochen Arts Academy, the Wylie Cooperate Mill dominated the forest between Duck and Green Lake. Located where the Boy's camp is along Duck Lake, The mill was in production from 1896 until it burned down in 1913. The sprawling lakeshore production site made wooden barrels, including the staves, tops and heads. The Manistee and Northeastern Railroad ran a spur to the mill, where the Wylie Mill delivered logs, and the finished barrels to Manistee, where they were shipped to Chicago. The idea for the Interlochen State Park was born in 1917, when the State purchased 200 acres of land from Willis Pennington. The land included one of the last remaining stands of virgin pine trees in the Lower Peninsula at a purchase price of \$60,000.



In 1919, the state Legislature created the Michigan State Park Commission and began acquiring 1260 acres at 23 sites. 17 of the original parks still exist today: Burt Lake, Cheboygan, East Tawas, Grand Haven, Harrisville, Hayes, Hoeft, Mears, Interlochen, Mitchell, Onaway, Orchard Beach, Otsego Lake, Silver Lake, Traverse City, Wilson and Young. Michigan was one of the first states to establish state parks due to the advent of the automobile. This changed how people vacationed. The Commission hoped these and future parks, linked by the state's new highways, would attract out of state tourists accustomed to leisurely East Coast vacations. Campers in the early days of the parks used tents entirely, but by the mid 1930's, trailers were becoming more popular.