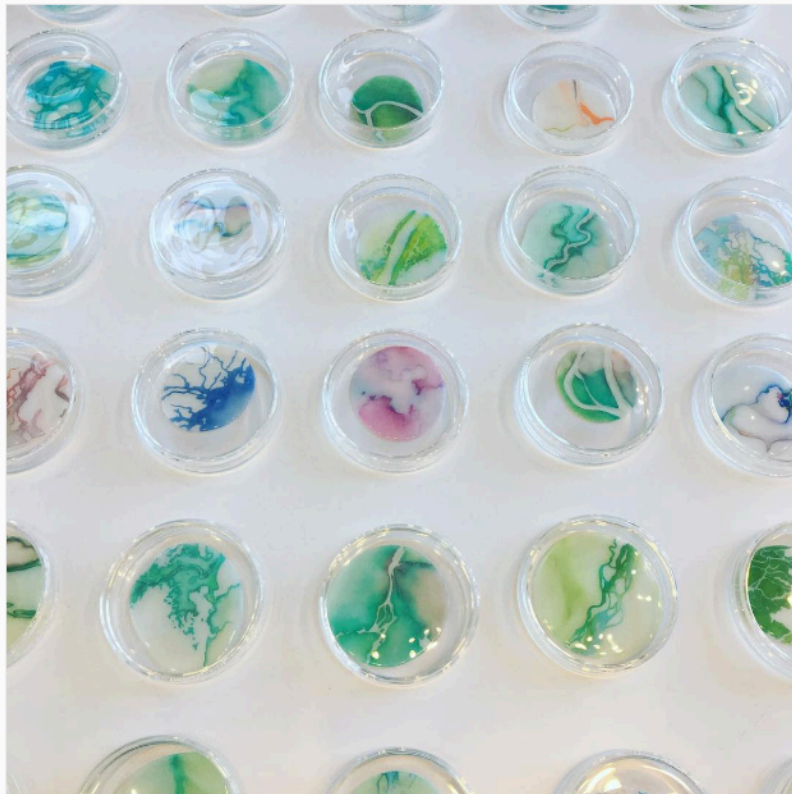


"For the last fourteen years my work has been focused on our fragile world waters as news stories of specific water places and issues drive me to respond...The steep challenges and consequences are real. The balancing of poetry and politics feeds and challenges me and my work."

introducing **LYNN BENSON / DROPS**....a seven year project



Four-inch glass petri dishes capture unique DROPS works, each a place in the world where water meets land as seen from satellite (map) view. You're seeing literal, watery and abstracted interpretations of rivers, deltas, lakes, shorelines, unique configurations, or landmarks, events or issues such as flooding, pollution, bad decisions. Each hand-etched number on the side of the lower dish corresponds to a brief description about that DROP.

The protected and "framed" DROPS are slightly dimensional. The artwork is on the bottom on matte film. The dimension comes from the poured and hardened but flexible clear acrylic medium poured onto the film prior to working in ink and colored pencil on the reverse side.

I have completed **1000** DROPS

EXHIBITION HISTORY: DROPS have appeared within four exhibitions to date, in quantities of 12 - 55:

The Spaces Between, (three person show), Salina Art Center, Salina, Kansas, 2020

Water Stories by Lynn Benson, Beach Museum of Art, Kansas State University, Manhattan, Kansas, 2018

Tributary @La Esquina, (dual exhibitions), Charlotte Street Foundation, Kansas City, Missouri, 2017

Water Ecologies, Idaho State University, Pocatello, for related conference, 2016; exhibition juror, Basia Irland

CURRENT STATUS:

LYNN BENSON / DROPS

"An archive-based conceptual art project following the contours of news and of waters on our one fragile planet"

DROPS #1 - 1000, (2012-2022), glass, acrylic, film, pencil, ink; 4" x 4" x 1" each.

Each of the 1000 DROPS has been **professionally photographed** by T. Maxwell Wagner.

Instagram: [@drops_collection](#) was set up to be an early reference to the work and the project.

Website: lynnbenson.com > **VIEW DROPS** button takes you to a **searchable database w/ DROPS info**

Archival **Prints** are available through lynnbenson.com...see downloadable pdf

Exhibition possibilities: in progress.

REGARDING EXHIBITION:

I'm looking for a good fit for venue(s) for full exhibition. These need to be seen out in the world where light can bounce off of the glass petri dishes and where they can be fully seen and considered.....perhaps where water is a particularly significant issue, coastal or western...though midwestern means a more sustainable solution in regard to transportation and travel from my midwest studio.

This project is available for purchase only as a complete collection.

If you have connections with potential funders, foundations, curators, university galleries, museums, or corporations, etc., who should know about this, please feel free to share this...OR, just let me know. I'm anxious for your thoughts of any kind. I'm very pleased with the intrigue which this project has aroused.

Thank you so much for your consideration of these possibilities. * (I can send a higher-res doc if needed!)

Lynn

lynnbenson.com

lynn@lynnbenson.com

913-461-6062

Instagram: @mlynnbenson

@drops_collection <<

@thewaterplacesproject



DROP: Keti Bunder South Wildlife Sanctuary, slightly inland of the Gulf of Oman, south of Karachi, Pakistan__No.496, 2020.

Winter resident Trish acting the collecting of a DROP in Key West, FL, at the southern-most point of the island. (One of my goals for the artist residency.)

(left and below)
Professional
photographer
low-res samples
from a photo
session in 2020.
Glass lids are
removed..

photo credit:
T Maxwell Wagner





Each of the 1000 DROPS images is available as a print...see downloadable pdf on website.

raining

I lift my palm, catch a drop

and consider our world all over again

lb