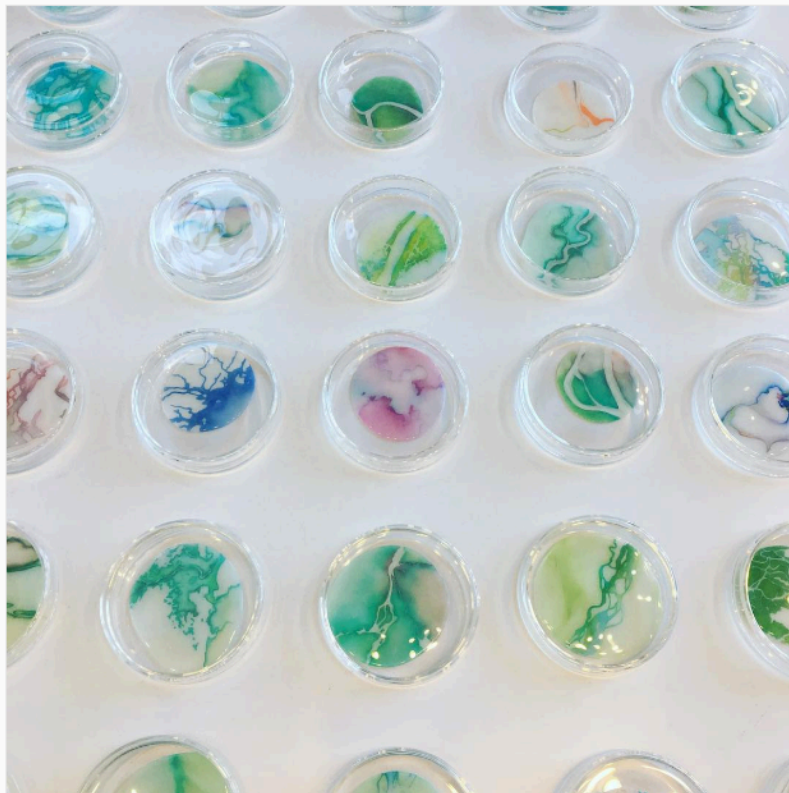


“For the last fourteen years my work has been focused on our fragile world waters as news stories of specific water places and issues drive me to respond...The steep challenges and consequences are real. The balancing of poetry and politics feeds and challenges me and my work.” —lynn benson

introducing **LYNN BENSON / DROPS**....a seven year project



Four-inch glass petri dishes capture unique DROPS works, each a place in the world where water meets land as seen from satellite view. You're seeing literal, watery and abstracted interpretations of rivers, deltas, lakes, shorelines, unique configurations, or landmarks, events or issues such as flooding, pollution, bad decisions. Each hand-etched number on the side of the lower dish corresponds to a brief description about that DROP.

The protected and “framed” DROPS are slightly dimensional. The artwork is on the bottom on matte film. The dimension comes from the poured and hardened but flexible clear acrylic medium poured onto the film prior to working in ink and colored pencil on the reverse side.

I have completed **1000** DROPS

EXHIBITION HISTORY: DROPS have appeared within four exhibitions to date, in quantities of 12 - 55:

The Spaces Between, (three person show), Salina Art Center, Salina, Kansas, 2020

Water Stories by Lynn Benson, Beach Museum of Art, Kansas State University, Manhattan, Kansas, 2018

Tributary @La Esquina, (dual exhibitions), Charlotte Street Foundation, Kansas City, Missouri, 2017

Water Ecologies, Idaho State University, Pocatello, for related conference, 2016; exhibition juror, Basia Irland

CURRENT STATUS:

LYNN BENSON / DROPS

“An archive-based conceptual art project following the contours of news and of waters on our one fragile planet”

DROPS #1 - 1000, (2012-2022), glass, acrylic, film, pencil, ink; 4” x 4” x 1” each.

Each of the 1000 DROPS has been **professionally photographed** by T. Maxwell Wagner.
Instagram: [@drops_collection](#) was set up to be an early reference to the work and the project.
Website: [lynnbenson.com](#) > VIEW DROPS button takes you to a **searchable database with DROPS info**
Archival **Prints** are available... contact lynn@lynnbenson.com for a downloadable pdf.
Exhibition possibilities: in progress.

REGARDING EXHIBITION:

I'm looking for a good fit for venue(s) for full exhibition.....perhaps where water is a particularly significant issue, coastal or western...though midwestern means a more sustainable solution in regard to transportation and travel from my midwest studio.

- *DROPS 1. need a crisp white background.
 - 2. should ideally be under UV protective lighting with no direct sunlight.
 - 3. need to always be positioned topside up and level throughout transport, storage, and exhibition.
- They are currently in flat-files which allow easy numerical access, UV and physical protection, and visibility.

The project is available for purchase as a complete collection.

If you have connections with potential funders, foundations, curators, university galleries, museums, or corporations, etc., who should know about this, please feel free to share this...OR, just let me know. I'm anxious for your thoughts of any kind. I'm pleased with the intrigue which this project has aroused. Thank you so much for your consideration of these possibilities. Isn't it time to discuss water??

Lynn

[lynnbenson.com](#)

lynn@lynnbenson.com

913-461-6062

Instagram: @mlynnbenson

[@drops_collection](#) <<

[@thewaterplacesproject](#)



DROP: Keti Bunder South Wildlife Sanctuary, slightly inland of the Gulf of Oman, south of Karachi, Pakistan__No.496, 2020.

Winter resident Trish acting the collecting of a DROP in Key West, FL, at the southern-most point of the island. (One of my goals for the artist residency.)

(left and below)
Professional
photographer
low-res samples
from a photo
session in 2020.
Glass lids are
removed..

photo credit: T
Maxwell Wagner





raining

I lift my palm, catch a drop

and consider our world all over again

lb