

the glistening  
accents and  
accentuating  
silhouettes of

# POP ART 1970-1980









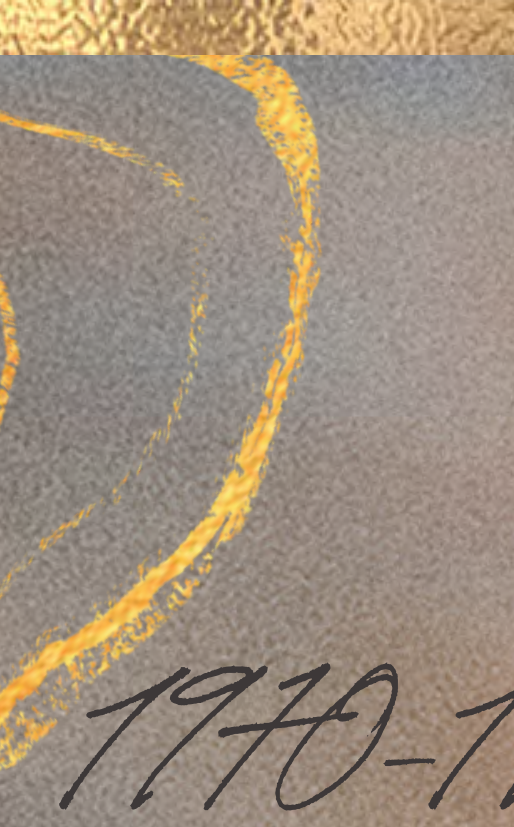
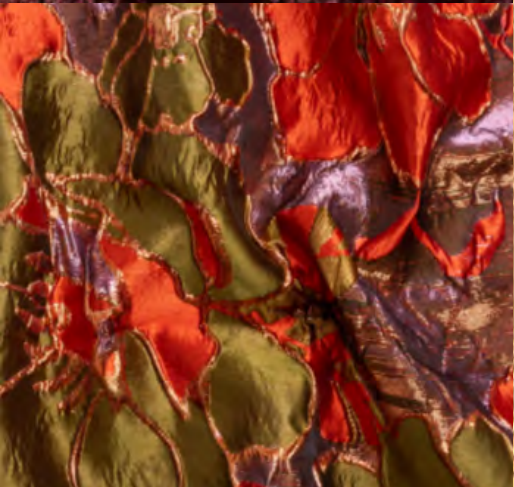




# Thumbnails



# Thumbnails



1970-1980



the glistening accents and accentuating silhouettes of



HAL  
STANW











- “74.107.30.” *Collections – eMuseum*, 1 Jan. 1972,  
[fashionmuseum.fitnyc.edu/objects/61578/7410730?ctx=2286c3c0-3973-462a-8968-634615e4acf2&idx=1](https://fashionmuseum.fitnyc.edu/objects/61578/7410730?ctx=2286c3c0-3973-462a-8968-634615e4acf2&idx=1).
- “76.118.3.” *Collections – eMuseum*,  
[fashionmuseum.fitnyc.edu/objects/8349/761183?ctx=2286c3c0-3973-462a-8968-634615e4acf2&idx=19](https://fashionmuseum.fitnyc.edu/objects/8349/761183?ctx=2286c3c0-3973-462a-8968-634615e4acf2&idx=19). Accessed 27 Nov. 2023.
- “80.128.12.” *Collections – eMuseum*, 1 Jan. 1974,  
[fashionmuseum.fitnyc.edu/objects/59237/8012812?ctx=2286c3c0-3973-462a-8968-634615e4acf2&idx=17](https://fashionmuseum.fitnyc.edu/objects/59237/8012812?ctx=2286c3c0-3973-462a-8968-634615e4acf2&idx=17). Accessed 27 Nov. 2023.
- “80.128.4.” *Collections – eMuseum*, 31 Dec. 1975,  
[fashionmuseum.fitnyc.edu/objects/106168/801284?ctx=8c0d6b25-d8bd-4514-a9f0-6f7457c4d4a7&idx=24](https://fashionmuseum.fitnyc.edu/objects/106168/801284?ctx=8c0d6b25-d8bd-4514-a9f0-6f7457c4d4a7&idx=24). Accessed 27 Nov. 2023.
- “81.250.1.” *Collections – eMuseum*, 31 Dec. 1977,  
[fashionmuseum.fitnyc.edu/objects/7999/812501?ctx=2286c3c0-3973-462a-8968-634615e4acf2&idx=13](https://fashionmuseum.fitnyc.edu/objects/7999/812501?ctx=2286c3c0-3973-462a-8968-634615e4acf2&idx=13). Accessed 27 Nov. 2023.
- “81.250.2.” *Collections – eMuseum*, 1 Jan. 1973,  
[fashionmuseum.fitnyc.edu/objects/9325/812502?ctx=2286c3c0-3973-462a-8968-634615e4acf2&idx=7](https://fashionmuseum.fitnyc.edu/objects/9325/812502?ctx=2286c3c0-3973-462a-8968-634615e4acf2&idx=7). Accessed 27 Nov. 2023.
- “82.237.12.” *Collections – eMuseum*, 31 Dec. 1971,  
[fashionmuseum.fitnyc.edu/objects/46868/8223712?ctx=2286c3c0-3973-462a-8968-634615e4acf2&idx=21](https://fashionmuseum.fitnyc.edu/objects/46868/8223712?ctx=2286c3c0-3973-462a-8968-634615e4acf2&idx=21). Accessed 27 Nov. 2023.
- “82.3.1.” *Collections – eMuseum*, 31 Dec. 1976,  
[fashionmuseum.fitnyc.edu/objects/27000/8231?ctx=8c0d6b25-d8bd-4514-a9f0-6f7457c4d4a7&idx=27](https://fashionmuseum.fitnyc.edu/objects/27000/8231?ctx=8c0d6b25-d8bd-4514-a9f0-6f7457c4d4a7&idx=27). Accessed 27 Nov. 2023.
- “82.3.5.” *Collections – eMuseum*, 31 Dec. 1974,  
[fashionmuseum.fitnyc.edu/objects/7385/8235?ctx=8c0d6b25-d8bd-4514-a9f0-6f7457c4d4a7&idx=33](https://fashionmuseum.fitnyc.edu/objects/7385/8235?ctx=8c0d6b25-d8bd-4514-a9f0-6f7457c4d4a7&idx=33). Accessed 27 Nov. 2023.
- “82.3.9.” *Collections – eMuseum*, 1 Jan. 1976,  
[fashionmuseum.fitnyc.edu/objects/21815/8239?ctx=2e0fc828-406a-44d1-be36-3675b87215bc&idx=26](https://fashionmuseum.fitnyc.edu/objects/21815/8239?ctx=2e0fc828-406a-44d1-be36-3675b87215bc&idx=26). Accessed 27 Nov. 2023.
- “88.16.2.” *Collections – eMuseum*, 31 Dec. 1969,  
[fashionmuseum.fitnyc.edu/objects/76408/88162?ctx=8c0d6b25-d8bd-4514-a9f0-6f7457c4d4a7&idx=31](https://fashionmuseum.fitnyc.edu/objects/76408/88162?ctx=8c0d6b25-d8bd-4514-a9f0-6f7457c4d4a7&idx=31). Accessed 27 Nov. 2023.

“91.241.18.” *Collections – eMuseum*, 31 Dec. 1978,  
[fashionmuseum.fitnyc.edu/objects/53429/9124118?ctx=2286c3c0-3973-462a-8968-634615e4acf2&idx=0](https://fashionmuseum.fitnyc.edu/objects/53429/9124118?ctx=2286c3c0-3973-462a-8968-634615e4acf2&idx=0). Accessed 27 Nov. 2023.

“91.241.32.” *Collections – eMuseum*, 31 Dec. 1977,  
[fashionmuseum.fitnyc.edu/objects/3325/9124132?ctx=2286c3c0-3973-462a-8968-634615e4acf2&idx=20](https://fashionmuseum.fitnyc.edu/objects/3325/9124132?ctx=2286c3c0-3973-462a-8968-634615e4acf2&idx=20). Accessed 27 Nov. 2023.

“95.161.1.” *Collections – eMuseum*, 31 Dec. 1977,  
[fashionmuseum.fitnyc.edu/objects/37658/951611?ctx=2e0fc828-406a-44d1-be36-3675b87215bc&idx=34](https://fashionmuseum.fitnyc.edu/objects/37658/951611?ctx=2e0fc828-406a-44d1-be36-3675b87215bc&idx=34). Accessed 27 Nov. 2023.

American, Designer Halston. “Halston: Coat: American.” *The Metropolitan Museum of Art*, [www.metmuseum.org/art/collection/search/154756](https://www.metmuseum.org/art/collection/search/154756). Accessed 27 Nov. 2023.

American, Designer Halston. “Halston: Dress: American.” *The Metropolitan Museum of Art*, 1 Jan. 1970, [www.metmuseum.org/art/collection/search/856928](https://www.metmuseum.org/art/collection/search/856928). Accessed 27 Nov. 2023.

American, Designer Halston. “Halston: Dress: American.” *The Metropolitan Museum of Art*, 1 Jan. 1978, [www.metmuseum.org/art/collection/search/181515](https://www.metmuseum.org/art/collection/search/181515). Accessed 27 Nov. 2023.

American, Designer Halston. “Halston: Dress: American.” *The Metropolitan Museum of Art*, [www.metmuseum.org/art/collection/search/185275](https://www.metmuseum.org/art/collection/search/185275). Accessed 27 Nov. 2023.

American, Designer Halston. “Halston: Dress: American.” *The Metropolitan Museum of Art*, [www.metmuseum.org/art/collection/search/88819](https://www.metmuseum.org/art/collection/search/88819). Accessed 27 Nov. 2023.

American, Designer Halston. “Halston: Evening Dress: American.” *The Metropolitan Museum of Art*, 1 Jan. 1970, [www.metmuseum.org/art/collection/search/80413](https://www.metmuseum.org/art/collection/search/80413). Accessed 27 Nov. 2023.

American, Designer Halston. “Halston: Evening Dress: American.” *The Metropolitan Museum of Art*, 1 Jan. 1970, [www.metmuseum.org/art/collection/search/81074](https://www.metmuseum.org/art/collection/search/81074). Accessed 27 Nov. 2023.

American, Designer Halston. “Halston: Evening Dress: American.” *The Metropolitan Museum of Art*, 1 Jan. 1970, [www.metmuseum.org/art/collection/search/81076](https://www.metmuseum.org/art/collection/search/81076). Accessed 27 Nov. 2023.

- American, Designer Halston. "Halston: Evening Dress: American." *The Metropolitan Museum of Art*, 1 Jan. 1970, [www.metmuseum.org/art/collection/search/81079](http://www.metmuseum.org/art/collection/search/81079). Accessed 27 Nov. 2023.
- American, Designer Halston. "Halston: Evening Dress: American." *The Metropolitan Museum of Art*, 1 Jan. 1972, [www.metmuseum.org/art/collection/search/85337](http://www.metmuseum.org/art/collection/search/85337). Accessed 27 Nov. 2023.
- American, Designer Halston. "Halston: Evening Dress: American." *The Metropolitan Museum of Art*, 1 Jan. 1973, [www.metmuseum.org/art/collection/search/79061](http://www.metmuseum.org/art/collection/search/79061). Accessed 27 Nov. 2023.
- American Designer Halston. "Halston: Evening Dress: American." *The Metropolitan Museum of Art*, 1 Jan. 1978, [www.metmuseum.org/art/collection/search/88817](http://www.metmuseum.org/art/collection/search/88817). Accessed 27 Nov. 2023.
- American, Designer Halston. "Halston: Evening Dress: American." *The Metropolitan Museum of Art*, [www.metmuseum.org/art/collection/search/155730](http://www.metmuseum.org/art/collection/search/155730). Accessed 27 Nov. 2023.
- American, Designer Halston. "Halston: Evening Dress: American." *The Metropolitan Museum of Art*, [www.metmuseum.org/art/collection/search/157798](http://www.metmuseum.org/art/collection/search/157798). Accessed 27 Nov. 2023.
- American, Designer Halston. "Halston: Evening Dress: American." *The Metropolitan Museum of Art*, [www.metmuseum.org/art/collection/search/159150](http://www.metmuseum.org/art/collection/search/159150). Accessed 27 Nov. 2023.
- American, Designer Halston. "Halston: Evening Dress: American." *The Metropolitan Museum of Art*, [www.metmuseum.org/art/collection/search/79269](http://www.metmuseum.org/art/collection/search/79269). Accessed 27 Nov. 2023.
- American, Designer Halston. "Halston: Evening Dress: American." *The Metropolitan Museum of Art*, [www.metmuseum.org/art/collection/search/80258](http://www.metmuseum.org/art/collection/search/80258). Accessed 27 Nov. 2023.
- American, Designer Halston. "Halston: Evening Dress: American." *The Metropolitan Museum of Art*, [www.metmuseum.org/art/collection/search/83966](http://www.metmuseum.org/art/collection/search/83966). Accessed 27 Nov. 2023.
- American, Designer Halston. "Halston: Evening Dress: American." *The Metropolitan Museum of Art*, [www.metmuseum.org/art/collection/search/86705](http://www.metmuseum.org/art/collection/search/86705). Accessed 27 Nov. 2023.

American, Designer Halston. "Halston: Evening Dress: American." *The Metropolitan Museum of Art*, [www.metmuseum.org/art/collection/search/87417](http://www.metmuseum.org/art/collection/search/87417). Accessed 27 Nov. 2023.

American, Designer Halston. "Halston: Evening Pantsuit: American." *The Metropolitan Museum of Art*, [www.metmuseum.org/art/collection/search/159557](http://www.metmuseum.org/art/collection/search/159557). Accessed 27 Nov. 2023.

American, Designer Halston. "Halston: Skirt: American." *The Metropolitan Museum of Art*, 1 Jan. 1970, [www.metmuseum.org/art/collection/search/81080](http://www.metmuseum.org/art/collection/search/81080). Accessed 27 Nov. 2023.

American, Designer Halston. "Halston: 'Savage': American." *The Metropolitan Museum of Art*, [www.metmuseum.org/art/collection/search/655912](http://www.metmuseum.org/art/collection/search/655912). Accessed 27 Nov. 2023.