

Instructions for Use

To use alone in snow or other soft surfaces



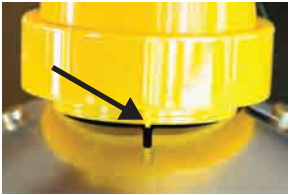
1. Insert Candle Lantern into Survival stand and press firmly to seat.

Your Survival Stand is now thermally insulated and will not melt surrounding snow. It is also stable in sand or other soft surfaces.

To use in combination with the Pak-Flat Reflector



2. Following separate instructions, assemble your Pak-Flat Reflector (not included).



3. Match fin (arrow), marked by center ridge on the outer ring, with the slot in Pak-Flat Reflector and gently insert until Survival Stand fully seated.



4. While gently pressing down, rotate Survival Stand assembly either direction 40 degrees (to the next ridge on the ring) to lock in place.

Your Lantern is now ready to stand on it's own!



5. To release, gently press down on the Pak-Flat Reflector at slot (or gently lift Survival Stand). Rotate back to the center index ridge.

6. Remove Survival Stand assembly.

*Survival Stand
for Candle Lanterns*



Prince Innovation
809 Bullivant Cresc. S.W.
Medicine Hat, AB T1A 5G6
www.princeinnovation.com