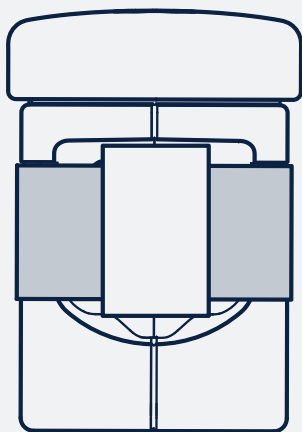


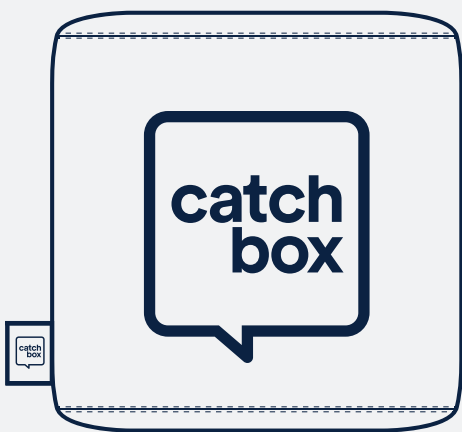
Catchbox Mod User Manual



Copyright 2022 Catchbox SIA version 1.0



Mod Capsule



Cuber Cover with ViralOff™

Contents

1. Safety instructions	2
2. Product description	4
2.1. Overview	
2.2. Included cables	
3. Products	5
3.1. Mod Capsule	
3.2. Cube locking mechanism	
3.3. Using Cube	
4. Troubleshooting	8
5. Maintenance and storage	9
6. Certification	10

1. Safety instructions



Notice

- Before using the product, read and understand the user manual and inform others of proper usage.
- Follow all warnings and instructions on the product and in this manual.
- Keep these instructions and always include these instructions when passing the apparatus on to third parties.



Warning

- Not heeding these warnings might lead to serious injury or property damage.
- Do not throw at people's heads and always make sure everyone is aware of the situation before throwing.
- Do not use in situations with fragile objects, hot liquids, or people susceptible to injury, like the very young or old.
- Do not throw long passes or hard passes.
- Properly lock the Mod Capsule into the Cover before use.
Always use the Cover and the Foam cap on the Mod Capsule, when using the product.
- Only use compatible 3rd party transmitters, as specified by the manufacturer, with the Mod Capsule. Using incompatible transmitters may result in damage to audio equipment, an increase in overall product weight leading to an increased chance of injury, and/or a failure of the locking mechanism causing the Mod Capsule or 3rd party transmitter to fall out during use causing injury.
- Operating or storing this product at temperatures above 50 degrees Celsius or 122 degrees Fahrenheit will cause the locking mechanism to fail permanently.
- This product contains magnets that could affect the functioning of pacemakers and other electronic implants. These could stop working or switch into test mode, causing illness. If you wear these devices keep sufficient distance to magnets. Warn others who wear these devices from getting too close to magnets.

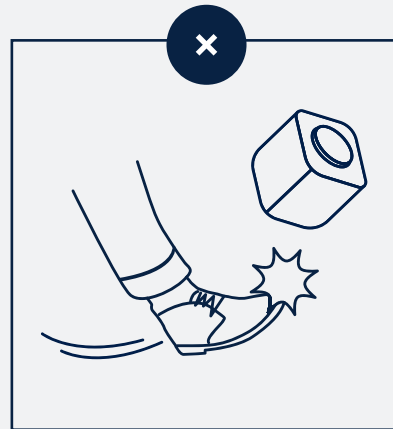
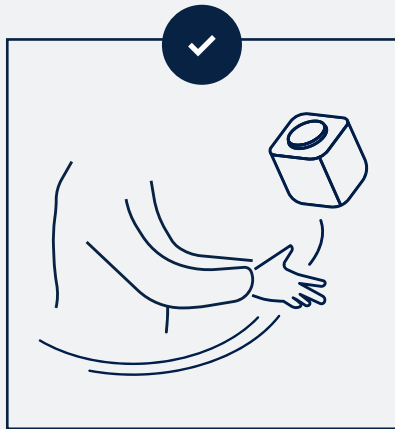


Caution

- Magnets produce a far-reaching, strong magnetic field. Keep magnets away from devices and objects that could be damaged by strong magnetic fields, like laptops and other electrical equipment.
- Do not place the product near heat sources such as heating ducts or radiators and do not expose it to direct sunlight, excessive dust, moisture, rain, mechanical vibrations or shock.
- Do not use near water. Use equipment indoors only. If the equipment comes into contact with a liquid, turn off the product and shut down the sound system.
- Avoid excessive volume. Do not exceed 70dBa for airborne noise.
- Clean the equipment with a moistened (not wet) cloth only. Be sure to turn off the device before cleaning the equipment, during lightning storms, and/or when not in use.
- Clean the equipment with a moistened (not wet) cloth only.
Be sure to disconnect the equipment from the power outlet before cleaning the equipment.
Unplug the apparatus during lightning storms or when not in use.
- The equipment should be opened, serviced, and repaired by qualified service personnel only.
- Do not attempt to modify this product or its accessories and use only accessories and attachments, specified by the manufacturer.
- Do not attempt to modify this product or its accessories and use only accessories and attachments, like antennas and power supply, specified by the manufacturer.
- Use only AA (LR6) type alkaline batteries with the product.
- Be sure to dispose of dead batteries as required by local waste disposal rules.
Never throw batteries into a fire or a garbage bin.

Throwing the Cube

To throw the Cube microphone, find someone in the audience who wants to ask a question or make a comment. Make sure that the person and those around them are aware of the situation and are prepared to catch.



Short, underhand passes of up to 5 m / 16 ft distance are recommended.



If someone farther away has a question, try to get the entire audience involved by having members pass the Cube short distances to the person who wants it. This is a great way to activate the crowd.



Improper throwing and use of the device can lead to serious injury and/or property damage. Do not throw at peoples' heads and always make sure everyone is aware of the situation before throwing. Do not use in situations with fragile objects, liquids, or people susceptible to injury. Do not kick or hit the Cube.

2. Product description

2.1. Overview

Catchbox Mod allows audio professionals to convert existing wireless microphone transmitters into soft, throwable microphones. These final assemblies, in turn, can be quickly passed from one audience member to the next in crowded spaces, making it an easy and engaging way to get audience members to ask questions and make comments, whether it be in a lecture, a meeting, a workshop, or conference. The Mod Capsule comes with an integrated professional microphone element connected to the unique Automute technology, which turns off the audio signal when the microphone is in movement, ensuring the system doesn't make any unwanted noises when being passed around.

All Cube Covers and Foam caps are treated with Polygiene ViralOff™ technology. ViralOff is an antimicrobial technology that reduces over 99% of microbes present on the fabric. The treated fabrics are skin-friendly and do not interfere with the natural bacterial ora of the skin. ViralOff is always on and thus ensures your Cube mic is always ready for use.

Key Features

- Automute technology
- Integrated Microphone Element
- Compatible with industry-leading wireless microphone brands
- Cube Cover with ViralOff™

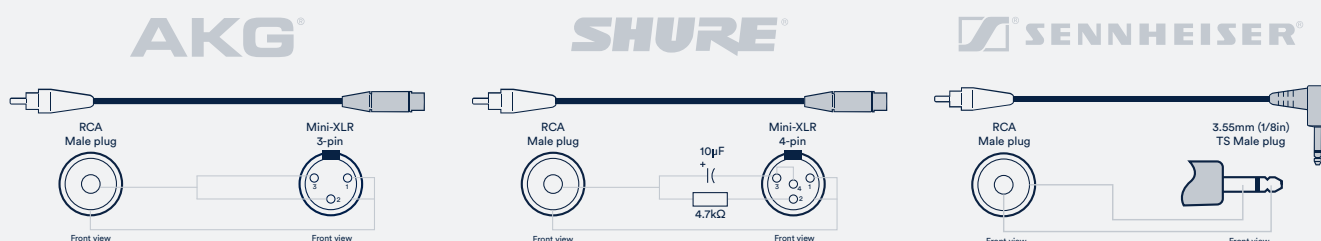
Included Components

- Mod Capsule
- Cube Cover
- RCA to 3 pin mini XLR adapter cable
- RCA to 4 pin mini XLR adapter cable
- RCA to 3.5 mm plug adapter cable

⚠ Caution

Do not attempt to modify this product or its accessories and use only accessories and attachments specified by the manufacturer.

2.2. Included cables



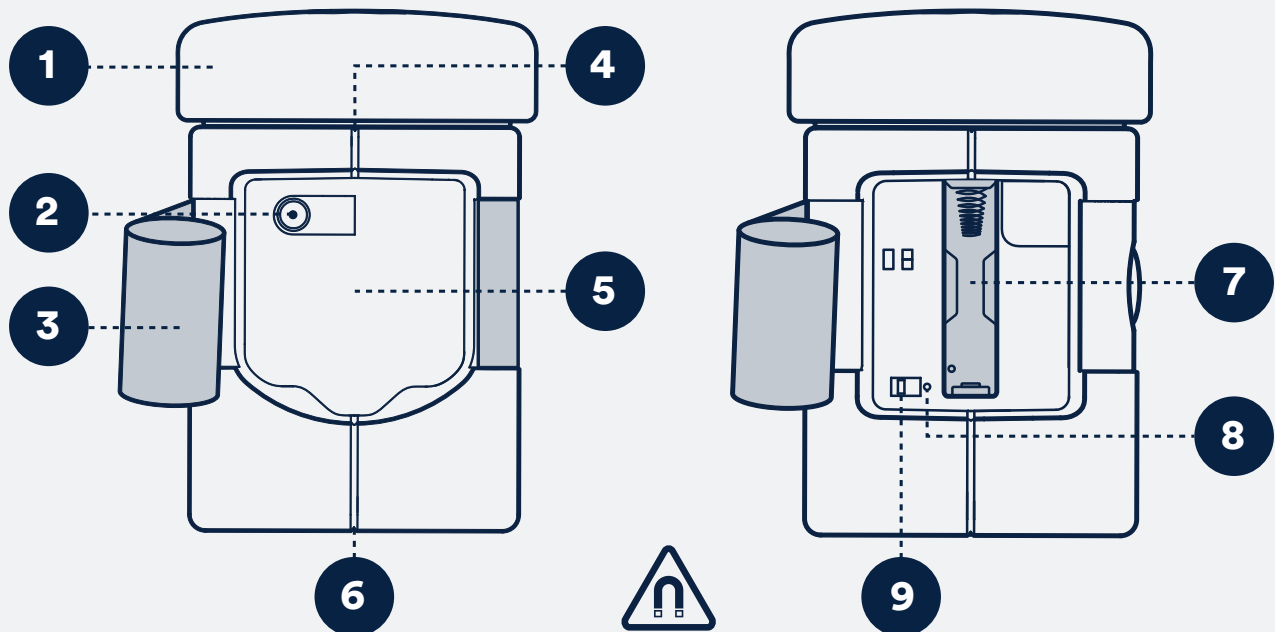
[For a list of compatible transmitters click here](#)

3. Products

3.1. Mod Capsule

The Mod Capsule itself does not act as a transmitter. Instead, wireless transmission is carried out entirely by the 3rd party wireless transmitter. This means no separate license is required to operate the Catchbox Mod as long as one has been obtained for the 3rd party wireless transmitter

Parts



1. Foam Cap

2. RCA Port

3. Velcro Straps

4. Microphone Element

5. Cavity for 3rd Party Transmitter

6. Magnetic Lock

7. Battery Compartment

8. Status LED

9. Power Switch

3.1.1. Mod Capsule LED status

Green



Power on

Red



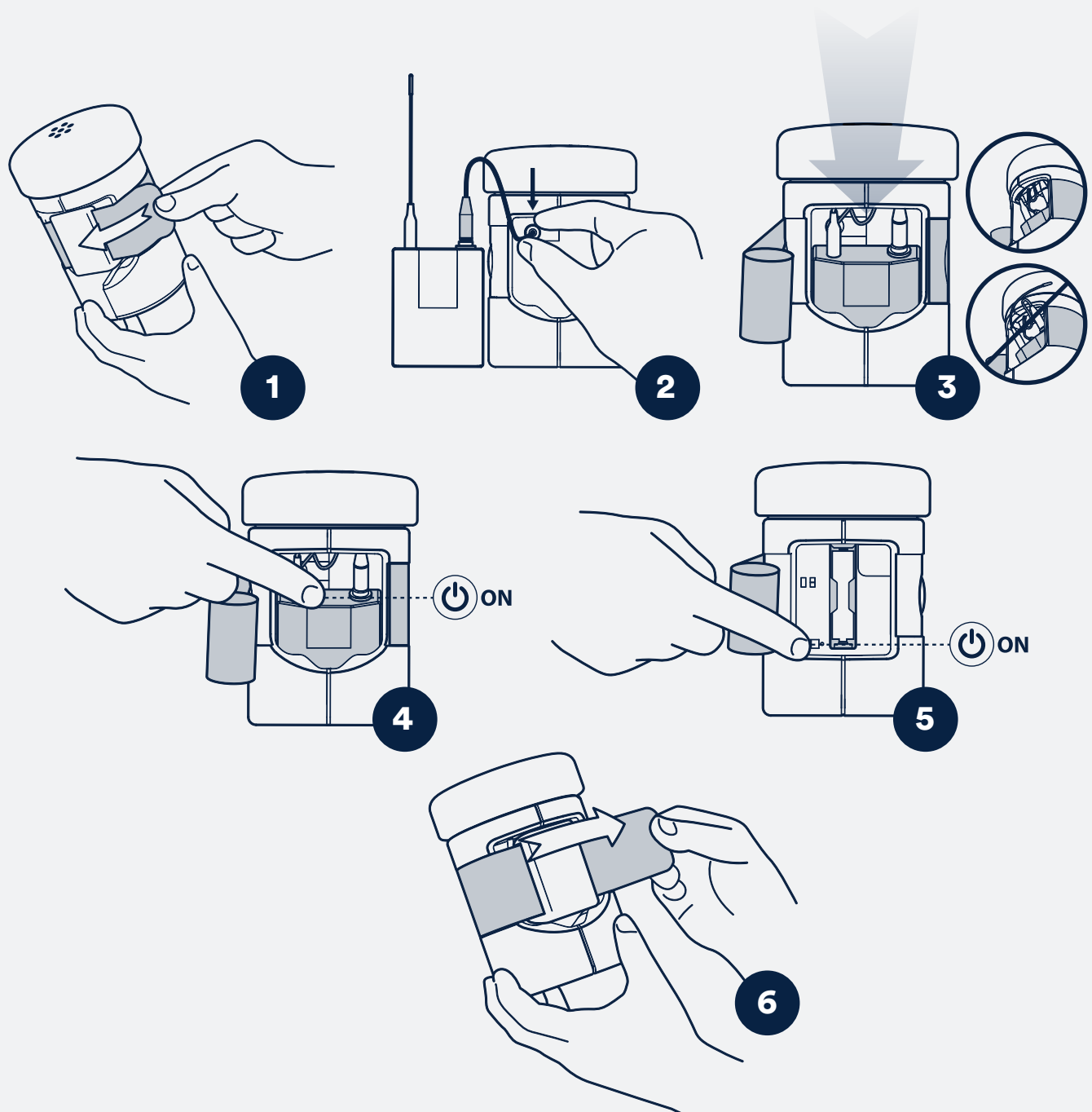
Battery level low (<2h remaining)

Off



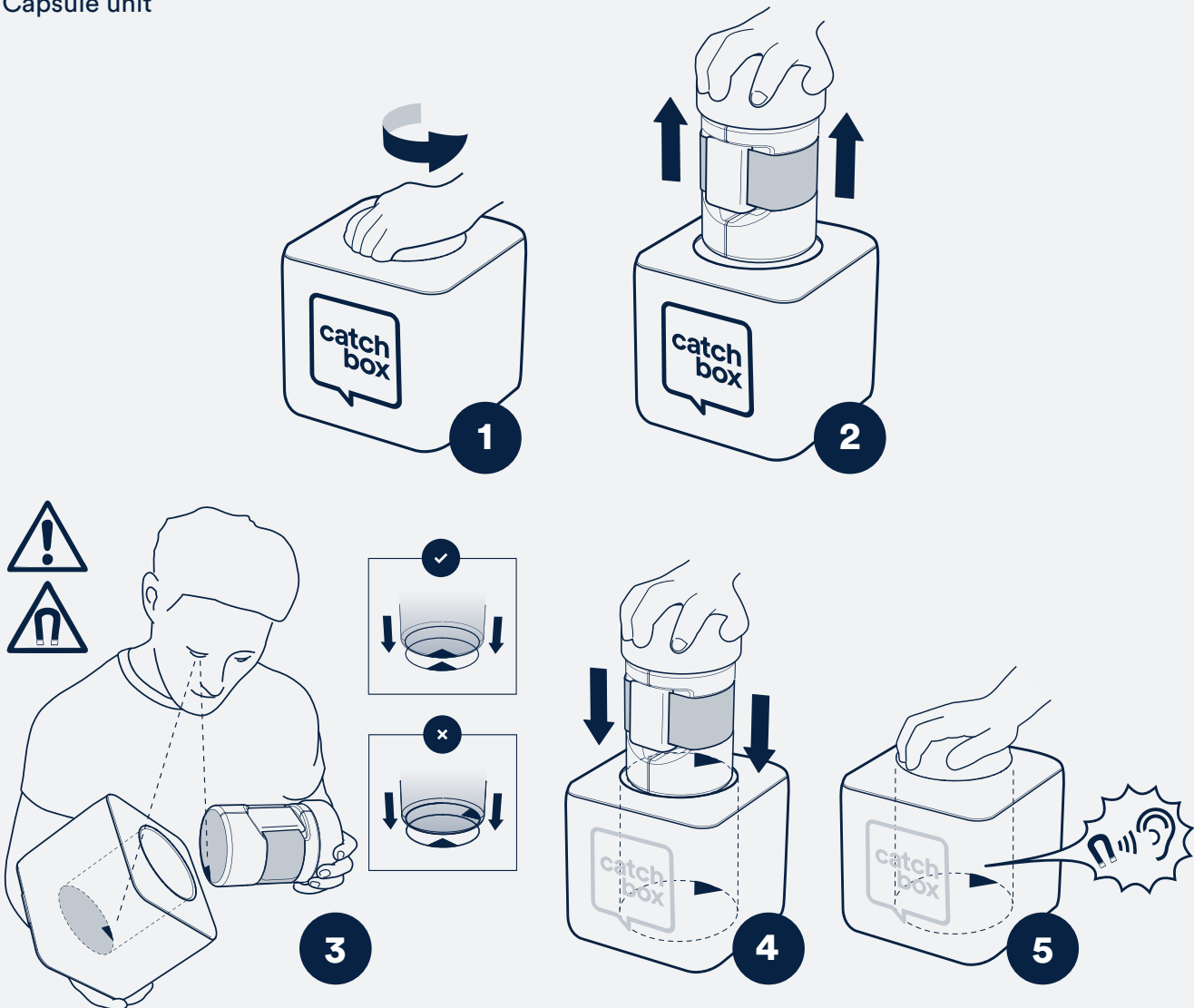
Off

3.1.2. Connecting a 3rd party transmitter to Mod Capsule



3.2. Cube locking mechanism

The locking mechanism is composed of two magnets that attract each other when correctly aligned. Remove the Mod Capsule from the outer Cover by twisting it 90 degrees and pulling it upwards. This motion will misalign the internal magnets and allow for easy removal of the Mod Capsule unit



3.2. Using Cube

To use the Cube, simply speak into the foam cap located on top of the Mod Capsule. An optimal distance of 20 cm / 8 in will provide the clearest sound while not blocking the face of the person speaking.



Avoid using the Cube near louspeakers as this can cause audio feedback.

4. Troubleshooting

Problem	Possible Cause	Solution
No sound	<ol style="list-style-type: none"> 1. Mod Capsule is not turned on, indicated by no light on the status LED. 2. 3rd party transmitter or the receiver is not turned on or these are not paired. 	<ol style="list-style-type: none"> 1. Turn on the Mod Capsule using the power switch located at the back of the device. The LED status light should turn green. If it doesn't, you may need to replace the battery. 2. Make sure both the 3rd party wireless transmitter and receiver are on and paired with each other. See corresponding 3rd party user manual for further assistance.
Audio signal dropouts or breaks	<ol style="list-style-type: none"> 1. Wireless connection between 3rd party transmitter and receiver is weak and unreliable. 	<ol style="list-style-type: none"> 1. See 3rd party transmitter and receiver user manual for more assistance. Common causes for a weak unreliable signal are that the receiver and the transmitter are located too far away from each other, the signal is being absorbed by objects between the two devices, and/or other devices are operating on the same frequency band, congesting the frequency band.
Distorted sound	<ol style="list-style-type: none"> 1. Adapter cable is broken or not properly attached. 2. Volume level is too high. 	<ol style="list-style-type: none"> 1. Check the adapter cable connection to the 3rd party transmitter as well as to the Mod Capsule. If the problem persists, replace the adapter cable. 2. Reduce the output volume at the receiver by using the volume knob.
Mod Capsule falling out of Cover	<ol style="list-style-type: none"> 1. The magnetic locks are misaligned. 2. Magnetic lock has been damaged or magnets have lost strength. 	<ol style="list-style-type: none"> 1. Align the magnets by twisting the Mod Capsule inside the Cover. 2. Get the product serviced.
Audio feedback	<ol style="list-style-type: none"> 1. Cube mic is situated too close to the speaker system. 	<ol style="list-style-type: none"> 1. Move the Cube mic away from the speakers.

For more technical assistance, contact us by email (info@catchbox.com) or visit our website (www.catchbox.com)

5. Maintenance, storage and disposal

Proper maintenance and storage of the Catchbox Mod will help ensure the product remains operational and safe to use. Improper maintenance or storage, in turn, can lead to equipment failure which can cause serious injury during use. Do not attempt to repair the unit yourself. The equipment should be opened, serviced, and repaired by authorized personnel only. Always refer to the user manual for proper maintenance, storage, and disposal instructions, and do not throw away the user manual. Always keep it near the product for reference by other users.

Cleaning

To clean the equipment, use a moistened (not wet) cloth only. Be sure to turn off the device before cleaning. To clean the outer Cover, first, remove the Mod Capsule from the inside. Only use dry cleaners and do not place the outer Cover in a washing machine. Always remember to inform cleaners that the device contains a magnet and should not be treated in temperatures in excess of 50 degrees Celsius, 122 degrees Fahrenheit, or near equipment sensitive to strong magnetic fields.

Storage

Magnets produce a far-reaching, strong magnetic field. Keep magnets away from devices and objects that could be damaged by strong magnetic fields, like laptops and other electrical equipment. Operating or storing this product above 50 degrees Celsius or 122 degrees Fahrenheit will cause the locking mechanism to fail permanently. This, in turn, will cause the Mod Capsule to fall out of the Cover during use, potentially leading to personal injury and/or property damage.

Do not place the equipment near heat sources such as heating ducts or radiators and do not expose it to direct sunlight, excessive dust, moisture, rain, mechanical vibrations, or shock.

Do not use or store near water. If the equipment comes into contact with a liquid, turn off the device along with the 3rd party transmitter attached to it.

Disposal

To dispose of a broken or defective unit, send the unit back to the manufacturer or consult your local waste management professional. Be sure to dispose of dead batteries as required by local waste disposal rules. Never throw batteries into a fire or a garbage bin.

6. Certification

The Catchbox Mod consists of:

Catchbox Module (Model #: CBPRO001)

Catchbox Mod Transmitter

Product meets the essential requirements of the European R&TTE Directive 1999/5/EC and is found to comply with the following standards:

EN 301 489-1 v1.9.2

EN 55032:2012+AC:2013+AC:2014

EN 55024:2011

This device complies with Part 15 of the FCC Rules.

Operation is subject to the following two conditions:

(1) this device may not cause harmful interference, and (2) this device must accept any interference received, including interference that may cause undesired operation.