

Specifications



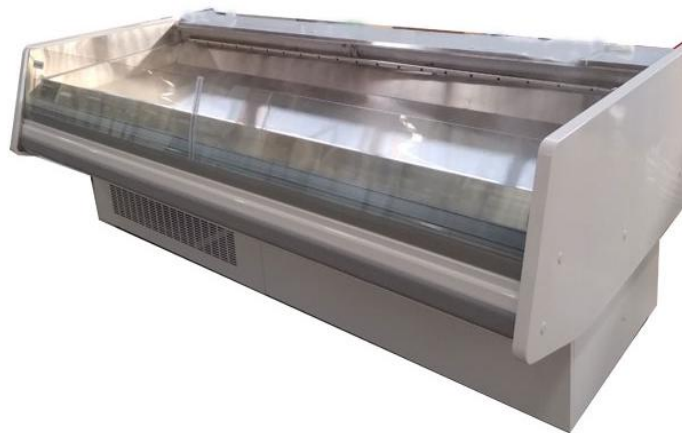
1800374343

AFD-2660

Fish Display

CABINET DIMENSIONS

	External
Height:	900mm
Width:	2660mm
Depth:	1150mm
Floor area:	3.06m ²



CABINET SPECIFICATIONS

Refrigeration system:	Electronic controlled, Ventilate Cooling
Refrigerant / Charge:	R404A
Front glass :	Freely move
Cabinet temperature range:	-2°C to +5°C
Condensing Water:	Stainless steel automatic evaporation
Water mist:	Stainless steel spray port
Electrical:	220-240 Volts a.c. 50 Hz, 15amp Australian plug
Power cord length:	2.5m
Internal lighting:	1LED
Bottom:	Stainless steel
Feet:	Wheel or feet
Insulation:	80mm polyurethane foam
Total weight:	250 kg

Austune Australia Pty Ltd reserve the right to alter specifications without notice.

Austune Australia Pty Ltd

Unit 3, 35 Davis Road Wetherill Park NSW 2164

Tel: 02 9725 1578