

GLASS DOOR BACK BAR COOLERS



EBB - Series



▲ E59BBG



▲ E124BBG



▲ E124BBGSS



▲ E146BBG



▲ E146BBGSS



▲ E172BBG



▲ E226BBG

Cabinet Construction

- Heavy duty stainless steel countertop with textured laminate, black vinyl exterior.
- Galvanized steel interior walls and high quality stainless steel floor.
- 1 3/4" thick high density polyurethane insulation.
- Four pre-installed 5" swivel casters with locks on front set (applies only to model EBB23G).
- Built-in caster thread receptacles for all models.

Refrigeration System

- Side mounted, self-contained and fully detachable Blizzard R290 condensing unit uses environmentally friendly, EPA-compliant R290 refrigerant with zero (0) Ozone Depletion Potential (ODP) and three (3) Global Warming Potential (GWP). Blizzard R290 is easily replaceable and requires no on-site brazing (Blizzard R290 condensing unit is back mounted for model EBB23G).
- Electronically commutated (ECM) fan motors achieve rapid cooling with less energy consumption.
- Full-length air duct system ensures optimal circulation of cold air.
- Time-initiated and temperature-terminated auto defrost cycle for seamless operation.
- Large capacity, corrosion-resistant condenser and evaporator coils.
- Self-maintaining, energy-efficient condensate drain pan requires no external drains or electric heaters.
- High performance, auto-reverse condenser fan motor supports compressor ventilation and condenser coil cleaning. Refer to owner's manual for full maintenance instructions.
- Pre-wired and ready to plug, 240V/50Hz/1Ph, 10Amp Australian Plug

Lighting

- Shielded LED bar lighting with on/off switch provides bright, high color illumination at lower heat output.

Doors

- Low emissivity double glass panes reflect UV rays for efficient cooling.
- Black PVC door frames. Matte finish aluminum door frames for models EBB48G-SS and EBB59G-SS.
- Snap-in magnetic door gasket make cleaning and replacement an easy process.
- High strength, die-cast door handles.
- Pre-installed door locks keep your items safe from theft.

Shelving

- Two epoxy coated, steel wire shelves per section.
- Height adjustable stainless steel clips.

Temperature Control

- Multi-function digital controller with easy to read LED display.
- Factory preset temperature, 2°C.
- Audible overheat protection alarm for compressor and condenser coil.

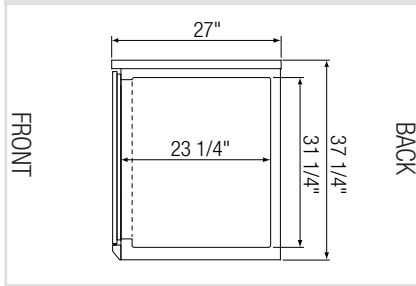
Options

- Additional shelving.
- 3" or 5" swivel casters with locks.
- 3.5" – 6" height-adjustable and interchangeable legs.

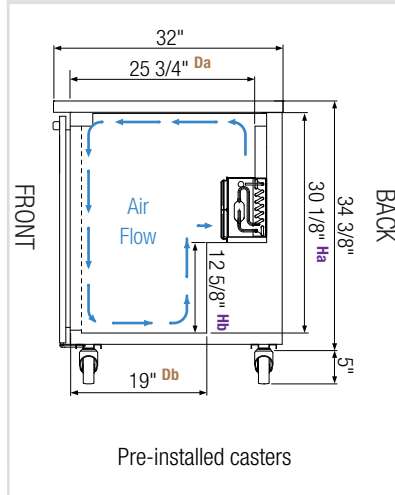


Dimensions

Side View (all models except E59BBG)

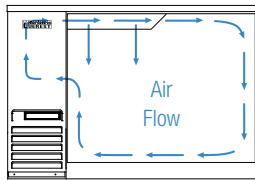


Side View E59BBG

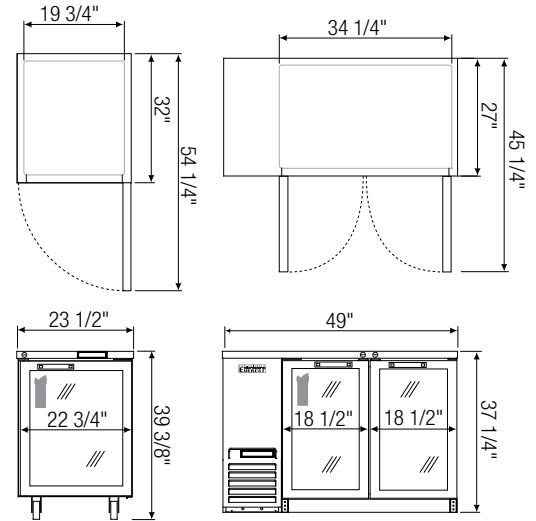


Equipped with 10Amp Australian Plug

Air Flow (all models except E59BBG)

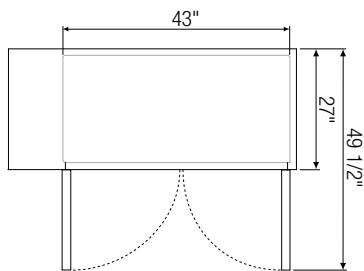


Front view of cabinet interior demonstrates air circulation from left to right.

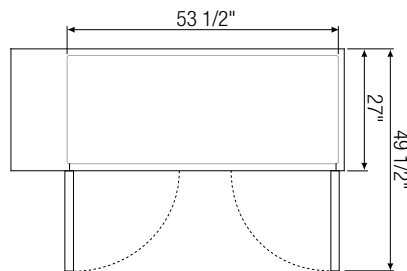


▲ E59BBG

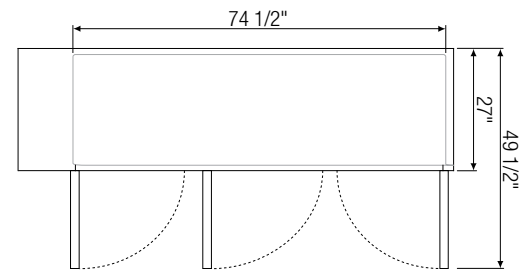
▲ E124BBGSS



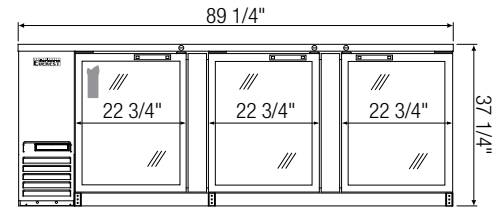
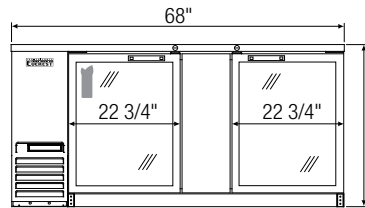
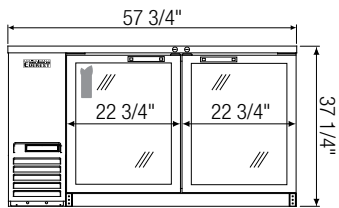
▲ E146BBGSS



▲ E172BBG



▲ E226BBG



Model	Ref/ Frz/ Dual	# of Doors	Shelves	Capacity (Cu. Ft.)	HP	BTU/HR †	Refrigerant	Capacity		Power (V-Hz-Ph)	Amps	Crated Weight (LBS)	Exterior Dimensions (Inches)		
								12 oz. Cans	12 oz. Bottles				L	D*	H
E59BBG	Ref	1	2	8	1/5	1,655	R290	220	125	240-50-1	2.5	179	23 1/2	32	39 3/8 ^a
E124BBGSS	Ref	2	4	14	1/4+	1,926	R290	490	344	240-50-1	3.5	288	49	27	37 1/4
E146BBGSS	Ref	2	4	20	1/4+	1,926	R290	640	408	240-50-1	3.5	313	57 3/4	27	37 1/4
E172BBG	Ref	2	4	24	1/4+	1,926	R290	800	504	240-50-1	3.5	347	68	27	37 1/4
E226BBG	Ref	3	6	32	1/3	2,311	R290	1120	696	240-50-1	2.5	472	89 1/4	27	37 1/4

*: Depth does not include protruding door handles.

a: Height includes 5" for casters.

†: Based on evaporating temperature of 23°F (-5°C) & condensing temperature of 131°F (55°C).

Da, Db: Interior Depth Ha, Hb: Interior Height

Specifications subject to change without notice.

Product dimensions are for general purposes and not absolute value. Product capacity (▶) is calculated based on standard industry figures. Slight variations may exist. If dimensions and capacity are critical, please contact Austune Refrigeration.

Blizzard R290 replacement is at the sole discretion of Everest Refrigeration.

Ref = Refrigerator



Please visit our website for updated Energy Efficiency information.