

# PASS-THRU REFRIGERATORS

## Top Mounted Condensing Unit

### EPT - Series



▲ EPT-1S1S



▲ EPT-1G1S



▲ EPT-2S2S



▲ EPT-2G2S

#### Cabinet Construction

- Pass Thru design allows seamless access from both front and back entry points.
- Open spaced interior with no walls between compartments.
- Heavy duty stainless steel interior / exterior with rounded corners for a hazard-free workspace.
- Galvanized steel top and bottom.
- 2.5" thick high density polyurethane insulation.
- Four 5" swivel casters with locks on front set.

#### Refrigeration System

- Top mounted, self-contained and fully detachable Blizzard R290 condensing unit uses environmentally friendly, EPA-compliant R290 refrigerant with zero (0) Ozone Depletion Potential (ODP) and three (3) Global Warming Potential (GWP). Blizzard R290 is easily replaceable and requires no on-site brazing.
- Electronically commutated (ECM) fan motors achieve rapid cooling with less energy consumption.
- Full-length air duct system and airflow guard ensure optimal circulation of cold air.
- Time-initiated and temperature-terminated auto defrost cycle for seamless operation.
- Large capacity, corrosion-resistant condenser and evaporator coils.
- Self-maintaining, energy-efficient condensate drain pan requires no external drains or electric heaters.
- High performance, auto-reverse condenser fan motor supports compressor ventilation and condenser coil cleaning. Refer to owner's manual for full maintenance instructions.
- Pressure relief devices allow smooth access to cabinet interior when re-opening doors.
- Pre-wired and ready to plug, 240V/50Hz/1Ph, 10Amp Australian Plug

#### Lighting

- Energy efficient silicone coated and shatter-proof LED lighting provides bright, high color illumination with low heat output for models, EPT-1S1S and EPT-2S2S.
- Shielded LED bar lighting with on/off switch provides bright, high color illumination at lower heat output for models, EPT-1G1S and EPT-2G2S.

#### Doors

- Solid or glass front and rear doors. Solid doors have stainless steel exterior/interior and 2.5" thick, high-density polyurethane insulation. Glass doors have low emissivity double glass panes that reflect UV rays for efficient cooling.
- Frame heaters prevent exterior moisture build up.
- Self-closing with adjustable torsion system for a positive seal.
- Snap-in magnetic door gasket make cleaning and replacement an easy process.
- High strength, recessed door handles.
- Pre-installed door locks keep your items safe from theft.
- Field reversible.

#### Shelving

- Three epoxy coated, steel wire shelves per section.
- Height adjustable stainless steel clips.

#### Temperature Control

- Multi-function digital controller with easy to read LED display.
- Factory preset temperature, 2°C.
- Audible overheat protection alarm for compressor and condenser coil.

#### Options

- 3.5" – 6" height-adjustable and interchangeable legs.
- 3" swivel casters with locks.
- Additional shelving.



## Dimensions

↔ = Interior Dimensions      ↔ = Exterior Dimensions

### ABS Legs

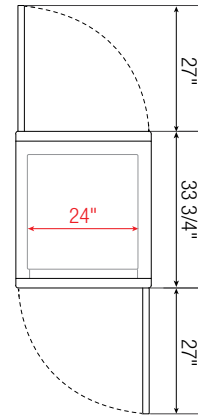
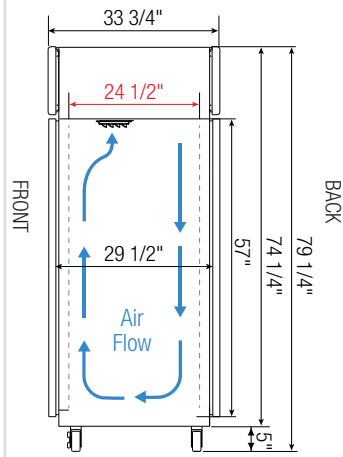


Adjustable stainless steel clad ABS legs for all models to provide extra stability when opening and closing doors and for weight support.

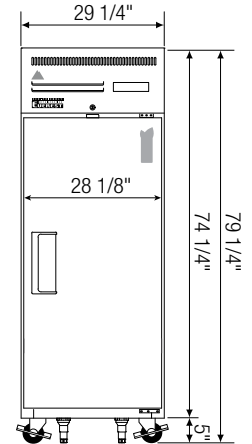


Equipped with 10Amp Australian Plug

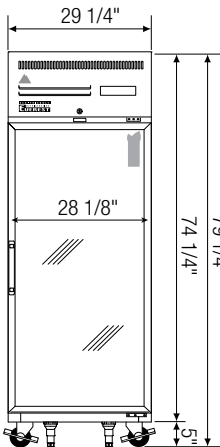
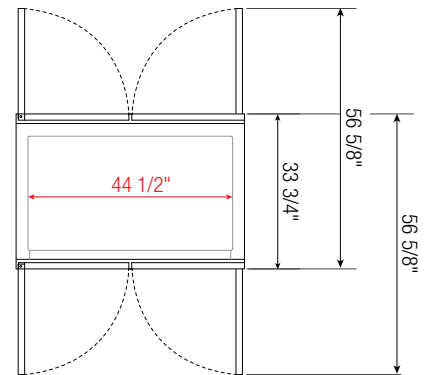
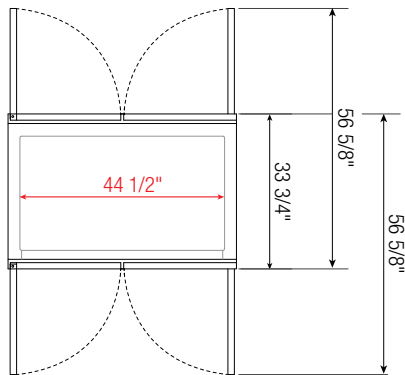
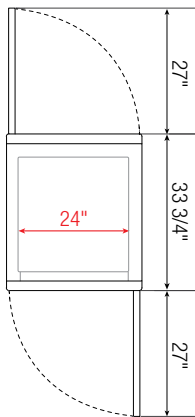
### Side View



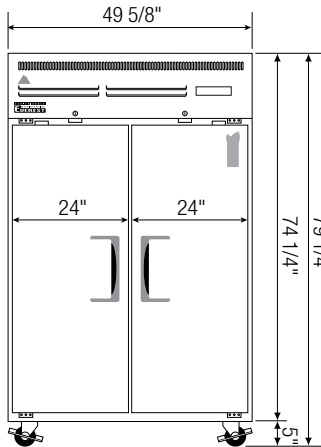
▲ EPT-1S1S



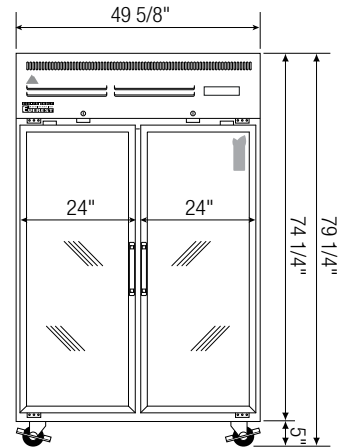
▲ EPT-1S1S



▲ EPT-1G1S



▲ EPT-2S2S



▲ EPT-2G2S

Model	Ref/ Frz/ Dual	# of Doors	Capacity (Liters)	HP	BTU/HR <sup>†</sup>	Refrigerant	# of Shelves	Power (V-Hz-Ph)	Exterior Dimensions (Inches)			
									Crated Weight (KG)	L	D	H*
EPT-1S1S	Ref	2	663	1/4+	1,926	R290	3	240-50-1	146	743	857	1910
EPT-1G1S	Ref	2	663	1/4+	1,926	R290	4	240-50-1	165	743	857	1910
EPT-2S2S	Ref	4	1228	1/3	2,311	R290	6	240-50-1	205	1260	857	1910
EPT-2G2S	Ref	4	1228	1/3+	2,938	R290	8	240-50-1	229	1260	857	1910

\*: Height does not include 5" for casters.

†: Based on evaporating temperature of 23°F (-5°C) & condensing temperature of 131°F (55°C).

Specifications subject to change without notice.

Product dimensions are for general purposes and not absolute value. Product capacity ( ) is calculated based on standard industry figures. Slight variations may exist. If dimensions and capacity are critical, please contact Austune Refrigeration.

Ref = Refrigerator

(H) = Half Door



Please visit our website for more information  
<http://www.austunecommercial.com/>