

# SIDE MOUNT SANDWICH PREP. TABLES

## Side Mounted Condensing Unit

EHR - Series 700mm Depth



▲ EHR90-1(700)



▲ EHR120-2(700)



▲ EHR150-2(700)



▲ EHR180-3(700)

### Cabinet Construction

- Heavy duty stainless steel interior / exterior with rounded corners for a hazard-free workspace.
- 16 gauge, high quality stainless steel worktop, lid and hood.
- Galvanized steel bottom and rear.
- 2.5" thick high density polyurethane insulation.
- Four 5" swivel casters with locks on front set.

### Refrigeration System

- Side mounted, self-contained and fully detachable Blizzard R290 condensing unit uses environmentally friendly, EPA-compliant R290 refrigerant with zero (0) Ozone Depletion Potential (ODP) and three (3) Global Warming Potential (GWP). Blizzard R290 is easily replaceable and requires no on-site brazing.
- Electronically commutated (ECM) fan motors achieve rapid cooling with less energy consumption.
- Full-length air duct system ensures optimal circulation of cold air.
- Time-initiated and temperature-terminated auto defrost cycle for seamless operation.
- Large capacity, corrosion-resistant condenser and evaporator coils.
- Self-maintaining, energy-efficient condensate drain pan requires no external drains or electric heaters.
- High performance, auto-reverse condenser fan motor supports compressor ventilation and condenser coil cleaning. Refer to owner's manual for full maintenance instructions.
- Pressure relief devices allow smooth access to cabinet interior when re-opening doors.
- Pre-wired and ready to plug, 240V/50Hz/1Ph, 10amp Australian Plug

### Lighting

- Energy efficient silicone coated and shatter-proof LED lighting provides bright, high color illumination with low heat output.

### Doors

- Heavy duty stainless steel interior / exterior.
- 2.5" thick high density polyurethane insulation.
- Frame heaters prevent exterior moisture build up.
- Self-closing with adjustable torsion system for a positive seal.
- Snap-in magnetic door gasket make cleaning and replacement an easy process.
- High strength, recessed door handles.

### Preparation Area

- NSF certified polycarbonate 6" deep pans (see table for size and quantity).
- ½" thick, foam insulated lid keeps top pan area cold and prevents moisture build-up.
- 12 ¼" deep cutting board is removable for ease of cleaning.

### Shelving

- Two epoxy coated, steel wire shelves per section.
- Height adjustable stainless steel clips.

### Temperature Control

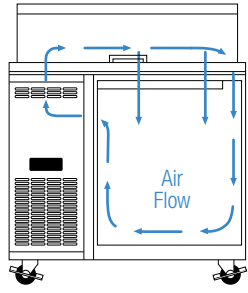
- Multi-function digital controller with easy to read LED display.
- Factory preset temperature, 2°C
- Audible overheat protection alarm for compressor and condenser coil.

### Options

- NSF certified stainless steel double overshelf.
- Additional shelving.
- 3" swivel casters with locks.
- 3.5" – 6" height-adjustable and interchangeable legs.

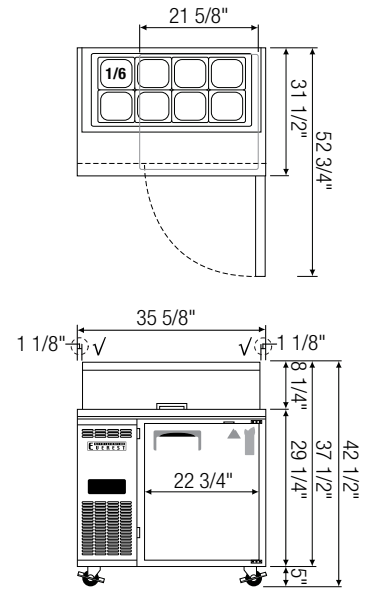
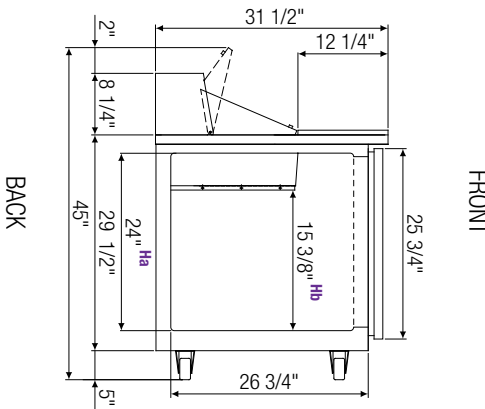
## Dimensions

### Air Flow



Front view of cabinet interior demonstrates air circulation from left to right.

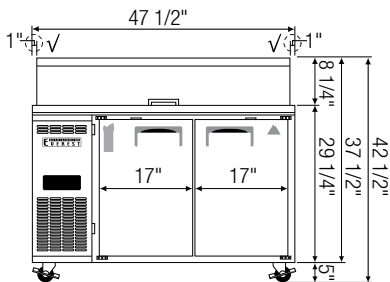
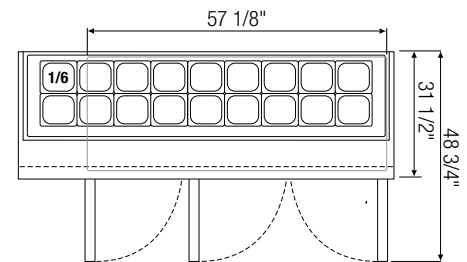
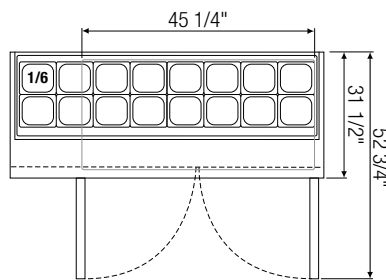
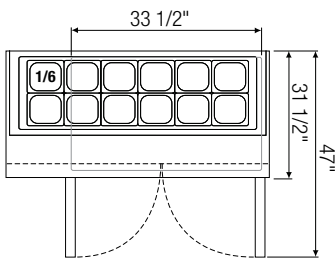
### Side View



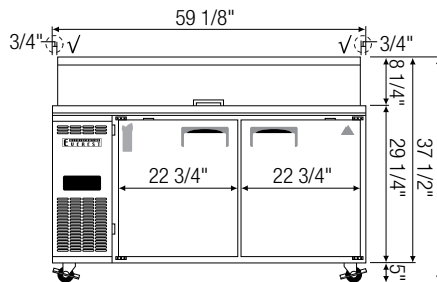
Equipped with 10amp Australian Plug

√ : Mounting space for standard aftermarket overshef.

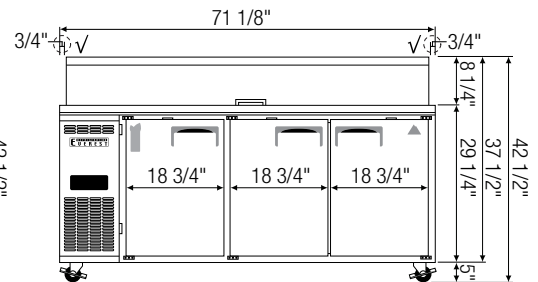
### ▲ EHR90-1(700)



### ▲ EHR120-2(700)



### ▲ EHR150-2(700)



### ▲ EHR180-3(700)

Model	Ref/ Frz/ Dual	# of Doors	Capacity (Litres)	HP	Refrigerant	# of Shelves	# of Pans	Power (V-Hz-Ph)	Crated Weight (KG)	Exterior Dimensions (Inches)		
										L	D	H*
EHR90-1(700)	Ref	1	254	1/4+	R290	2	1/6 x 8	240-50-1	121	906	700	1055
EHR120-2(700)	Ref	2	368	1/4+	R290	4	1/6 x 12	240-50-1	147	1206	700	1055
EHR150-2(700)	Ref	2	486	1/4+	R290	4	1/6 x 16	240-50-1	173	1506	700	1055
EHR180-3(700)	Ref	3	594	1/3	R290	6	1/6 x 18	240-50-1	206	1806	700	1055

\*: Height does not include 5" for casters.

Ref = Refrigerator

Ha, Hb : Interior Height

Specifications subject to change without notice.

Product dimensions are for general purposes and not absolute value. Product capacity (▶) is calculated based on standard industry figures. Slight variations may exist. If dimensions and capacity are critical, please contact Austune Refrigeration. Blizzard R290 replacement is at the sole discretion of Everest Refrigeration.



Please visit our website for more information  
<http://www.austunecommercial.com/>