

SOLID SLIDE LID GLASS & PLATE CHILLERS

EGC - Series



▲ E90GC



▲ E125GC



▲ E164GC

Cabinet Construction

- Heavy duty stainless steel countertop and rails with textured laminate, black vinyl exterior.
- Galvanized steel interior.
- 1 3/4" thick high density polyurethane insulation.
- Built-in caster thread receptacles for all models.

Refrigeration System

- Bottom mounted, self-contained and retractable condensing unit uses environmentally friendly, EPA compliant R290 refrigerant with zero (0) Ozone Depletion Potential (ODP) and three (3) Global Warming Potential (GWP). Blizzard R290 is easily replaceable and require no on-site brazing.
- Electronically commutated (ECM) fan motors achieve rapid cooling with less energy consumption.
- Full-length air duct system ensures optimal circulation of cold air.
- Time-initiated and temperature-terminated defrost cycle with defrost heater.
- Large capacity, corrosion-resistant condenser and evaporator coils.
- Self-maintaining, energy-efficient condensate drain pan requires no external drains or electric heaters.
- High performance, auto-reverse condenser fan motor supports compressor ventilation and condenser coil cleaning. Refer to owner's manual for full maintenance instructions.
- Pre-wired and ready to plug, 240V/50Hz/1Ph, 10Amp Australian Plug

Lighting

- Shielded LED bar lighting with on/off switch provides bright, high color illumination at lower heat output.

Lids

- Heavy duty stainless steel exterior and galvanized steel interior.
- 3/4" thick high density polyurethane insulation.
- Removable ratchet locks keep your items safe from theft.

Shelving

- Two levels of epoxy coated, steel wire shelves slide horizontally for easy storage of glasses and plates (see table for quantity).

Temperature Control

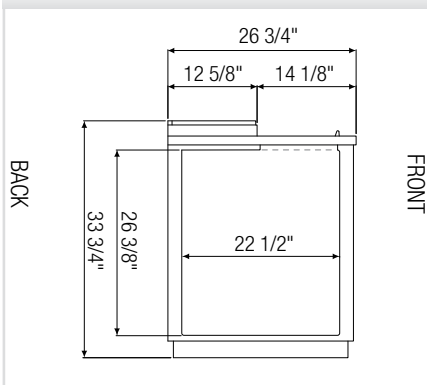
- Multi-function digital controller with easy to read LED display.
- Factory preset temperature, 2°C.
- Audible overheat protection alarm for compressor and condenser coil.

Options

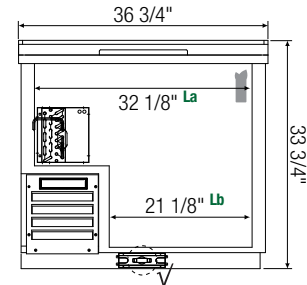
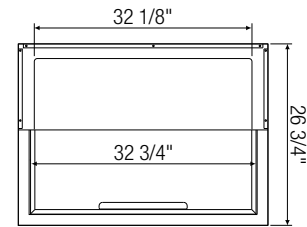
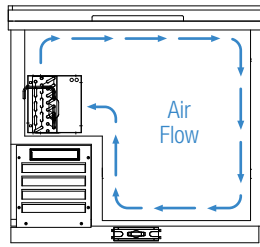
- 3" or 5" swivel casters with locks.
- 3.5" – 6" height-adjustable and interchangeable legs.

Dimensions

Side View

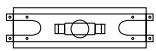


Air Flow



▲ **E90GC**

✓ : **Drain**



T-Shaped PVC Drain Fittings w/ Movable Plug.

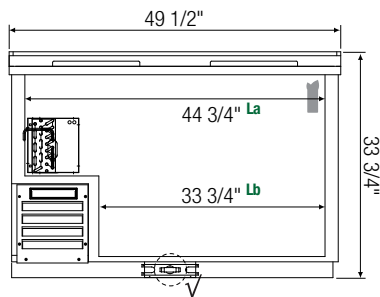
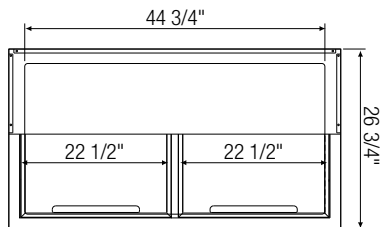
It is required to use a hose attachment w/ 3/4" inner diameter.



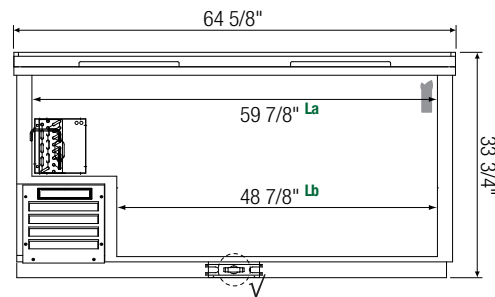
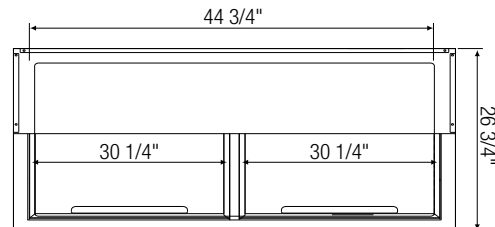
Lids come standard with ratchet locks.



Equipped with 9 ft long NEMA 5-15P plug.



▲ **E125GC**



▲ **E164GC**

Model	Ref/ Frz/ Dual	# of Lids	Capacity (Cu. Ft.)	HP	BTU/HR [†]	Refrigerant	# of Shelves	Capacity (8" Mugs)	Power (V-Hz-Ph)	Amps	Crated Weight (LBS)	Exterior Dimensions (Inches)		
												L	D	H
E90GC	Frz	1	11	1/2	1,979	R290	3	160	240-50-1	5	209	36 3/4	26 3/4	33 3/4
E125GC	Frz	2	15	1/2	1,979	R290	5	230	240-50-1	5	263	49 1/2	26 3/4	33 3/4
E164GC	Frz	2	21	1/2	1,979	R290	7	290	240-50-1	5	314	64 5/8	26 3/4	33 3/4

[†] : Based on evaporating temperature of 23°F (-5°C) & condensing temperature of 131°F (55°C).

Frz = Freezer

La, Lb : Interior Length

Specifications subject to change without notice.

Product dimensions are for general purposes and not absolute value. Product capacity () is calculated based on standard industry figures. Slight variations may exist. If dimensions and capacity are critical, please contact Austune Refrigeration. Blizzard R290 replacement is at the sole discretion of Everest Refrigeration.



Please visit our website for updated Energy Efficiency information.