

# UPRIGHT REACH-IN GLASS DOOR REFRIGERATORS

## Top Mounted Condensing Unit

ER - Series STAINLESS STEEL DOORS



▲ ER74-1G



▲ ER74-2G



▲ ER126-2G



▲ ER126-4G



▲ ER150-2G



▲ ER190-3G

### Cabinet Construction

- Heavy duty stainless steel interior / exterior with rounded corners for a hazard-free workspace.
- Galvanized steel top, bottom and rear.
- 2.5" thick high density polyurethane insulation.
- Four 5" swivel casters with locks on front set.

### Refrigeration System

- Top mounted, self-contained and fully detachable Blizzard R290 condensing unit uses environmentally friendly, EPA-compliant R290 refrigerant with zero (0) Ozone Depletion Potential (ODP) and three (3) Global Warming Potential (GWP). Blizzard R290 is easily replaceable and requires no on-site brazing.
- Electronically commutated (ECM) fan motors achieve rapid cooling with less energy consumption.
- Full-length air duct system and airflow guard ensure optimal circulation of cold air.
- Time-initiated and temperature-terminated auto defrost cycle for seamless operation.
- Large capacity, corrosion-resistant condenser and evaporator coils.
- Self-maintaining, energy-efficient condensate drain pan requires no external drains or electric heaters.
- High performance, auto-reverse condenser fan motor supports compressor ventilation and condenser coil cleaning. Refer to owner's manual for full maintenance instructions.
- Pressure relief devices allow smooth access to cabinet interior when re-opening doors.
- Pre-wired and ready to plug, 240V/50Hz/1Ph

### Lighting

- Shielded LED bar lighting with on/off switch provides bright, high color illumination at lower heat output.

### Doors

- Low emissivity double glass panes reflect UV rays for efficient cooling.
- Matte finish aluminum door frames.
- Frame heaters prevent exterior moisture build up.
- Self-closing with adjustable torsion system for a positive seal.
- Snap-in magnetic door gasket make cleaning and replacement an easy process.
- High strength, die-cast door handles.
- Pre-installed door locks keep your items safe from theft
- Field reversible (does not apply to model ER126-4G).

### Shelving

- Four epoxy coated, steel wire shelves per section.
- Height adjustable stainless steel clips.

### Temperature Control

- Multi-function digital controller with easy to read LED display.
- Factory preset temperature, 2°C
- Audible overheat protection alarm for compressor and condenser coil.

### Options

- Additional shelving.
- 3" swivel casters with locks.
- 3.5" – 6" height-adjustable and interchangeable legs.



## Dimensions

### ABS Legs

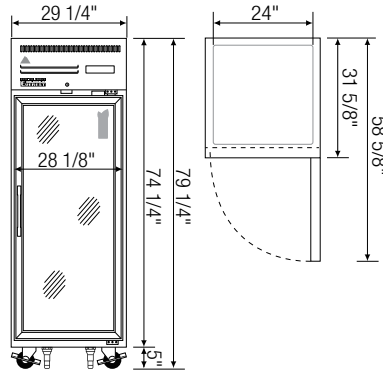
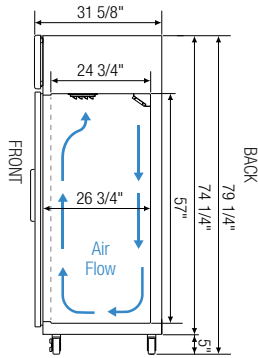


Two additional front adjustable stainless steel clad ABS legs for models ER74-1G and ER74-2G to provide extra stability when opening and closing door, and one additional leg for model ER190-3G for weight support.

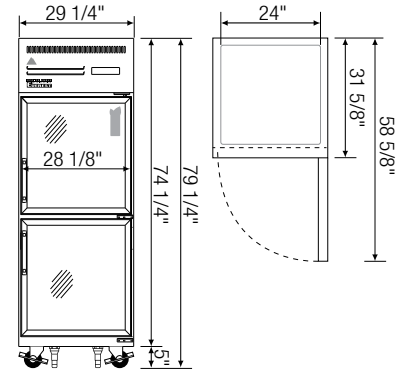


Equipped with 10amp Australian plug

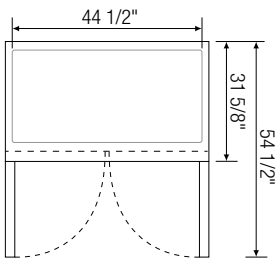
### Side View



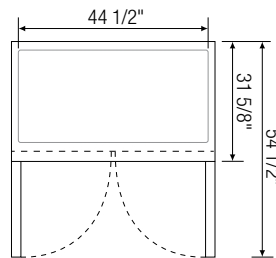
▲ ER74-1G



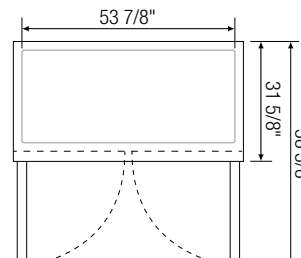
▲ ER74-2G



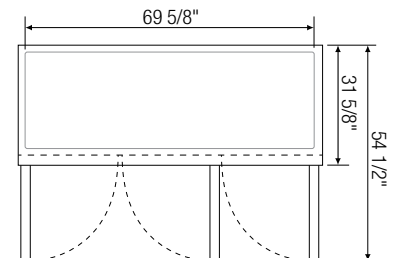
▲ ER126-2G



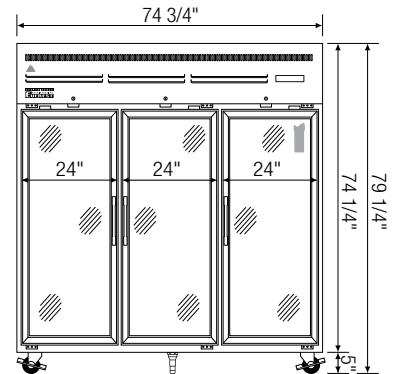
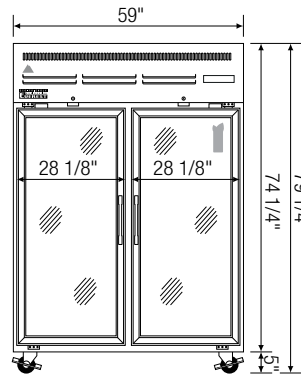
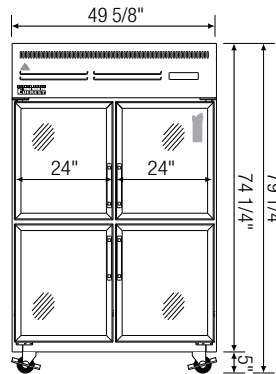
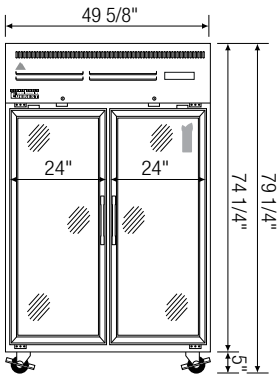
▲ ER126-4G



▲ ER150-2G



▲ ER190-3G



Model	Ref/ Frz/ Dual	# of Doors	Capacity (Litres)	HP	BTU/HR <sup>†</sup>	Refrigerant	# of Shelves	Power (V-Hz-Ph)	Crated Weight (KG)	Exterior Dimensions (Inches)		
										L	D <sup>a</sup>	H <sup>*</sup>
ER74-1G	Ref	1	651	1/4+	1,926	R290	4	240-50-1	149	740	803	1910
ER74-2G	Ref	2 (H)	651	1/4+	1,926	R290	4	240-50-1	149	740	803	1910
ER126-2G	Ref	2	1359	1/3	2,311	R290	8	240-50-1	211	1260	803	1910
ER126-4G	Ref	4 (H)	1359	1/3	2,311	R290	8	240-50-1	211	1260	803	1910
ER150-2G	Ref	2	1557	1/2	1,670	R290	8	240-50-1	244	1500	803	1910
ER190-3G	Ref	3	2010	3/4	4,445	R290	12	240-50-1	300	1900	803	1910

\* : Height does not include 5" for casters.

† : Based on evaporating temperature of 23°F (-5°C) & condensing temperature of 131°F (55°C).

a : Exterior depth dimension does not include 1-1/2" for door handles.

Specifications subject to change without notice.

Product dimensions are for general purposes and not absolute value. Product capacity (▶) is calculated based on standard industry figures. Slight variations may exist. If dimensions and capacity are critical, please contact Austune Refrigeration.

Blizzard R290 replacement is at the sole discretion of Everest Refrigeration.

(H) = Half Door | Ref = Refrigerator



Please visit our website for more information  
<http://www.austunecommercial.com/>