

THE GARAGE THAT LASTS

BEAUTIFUL DESIGN ■ DURABLE ■ SUPERIOR QUALITY ■ SMART CHOICE

Wall Mounted Cabinets

Our **off-the-floor** cabinet mounting makes cleaning easy and protects your cabinets and belongings from water, debris and pests.

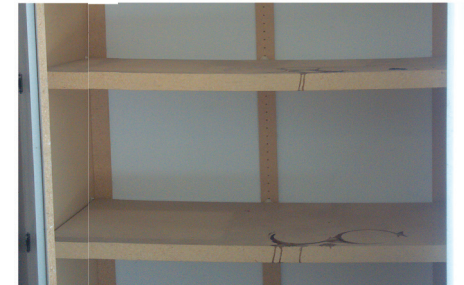


THEIRS

Competitors use kick plates and support legs which can lead to water damage, insect nesting and cleaning issues.

Durable Shelves

We use **one-inch thick**, thermo-fused shelves with a load-bearing capacity of 100 pounds. Our shelves are stain resistant and will not bow or crack.



THEIRS

Other companies use low density, unprotected fiberboard which stains easily and can buckle and crack under heavy weight.

Quality Construction

Our $\frac{3}{4}$ " thick, commercial grade cabinet construction will not chip, warp, flake or disintegrate. **We guarantee it for life.** Period.



THEIRS

Cheaper materials fall apart over time. Peeling edge banding, joint separation, cracking, chipping and warping are common problems.

Fully Integrated Backs

All of our garage systems are installed with **fully integrated backs** which strengthens the cabinets and prevents dirt and insects from entering.



THEIRS

Lower-priced competitors use thin butt-joined backs or no backs at all which compromises strength and creates gaps.

Quality Hardware

Our interior-mounted, fully concealed, **soft closing** steel hinges allow doors to swing open 110 degrees providing easier access to belongings.



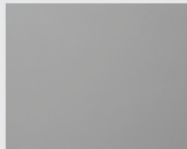
THEIRS

Other companies use low-end hardware which is unsightly and doesn't stand up against normal use and environmental hazards.

Cabinet Color Choices



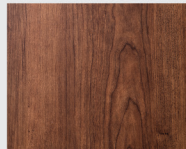
White
Solid



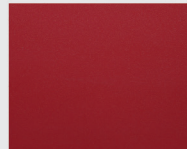
Silver
Metallic



Maple
Wood Grain



Coco
Wood Grain



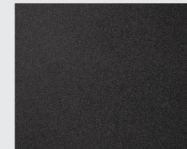
Red
Powder Coated



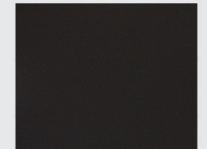
Windswept Bronze
Metallic



Windswept Pewter
Metallic



Granite
Powder Coated



Slate
Solid

ORGANIZERS
DIRECT

Authorized Dealer