

# RIVER ROAD ADDITION

TO THE  
VILLAGE OF COOPERSVILLE,  
Polkton Township, Ottawa County, Michigan.

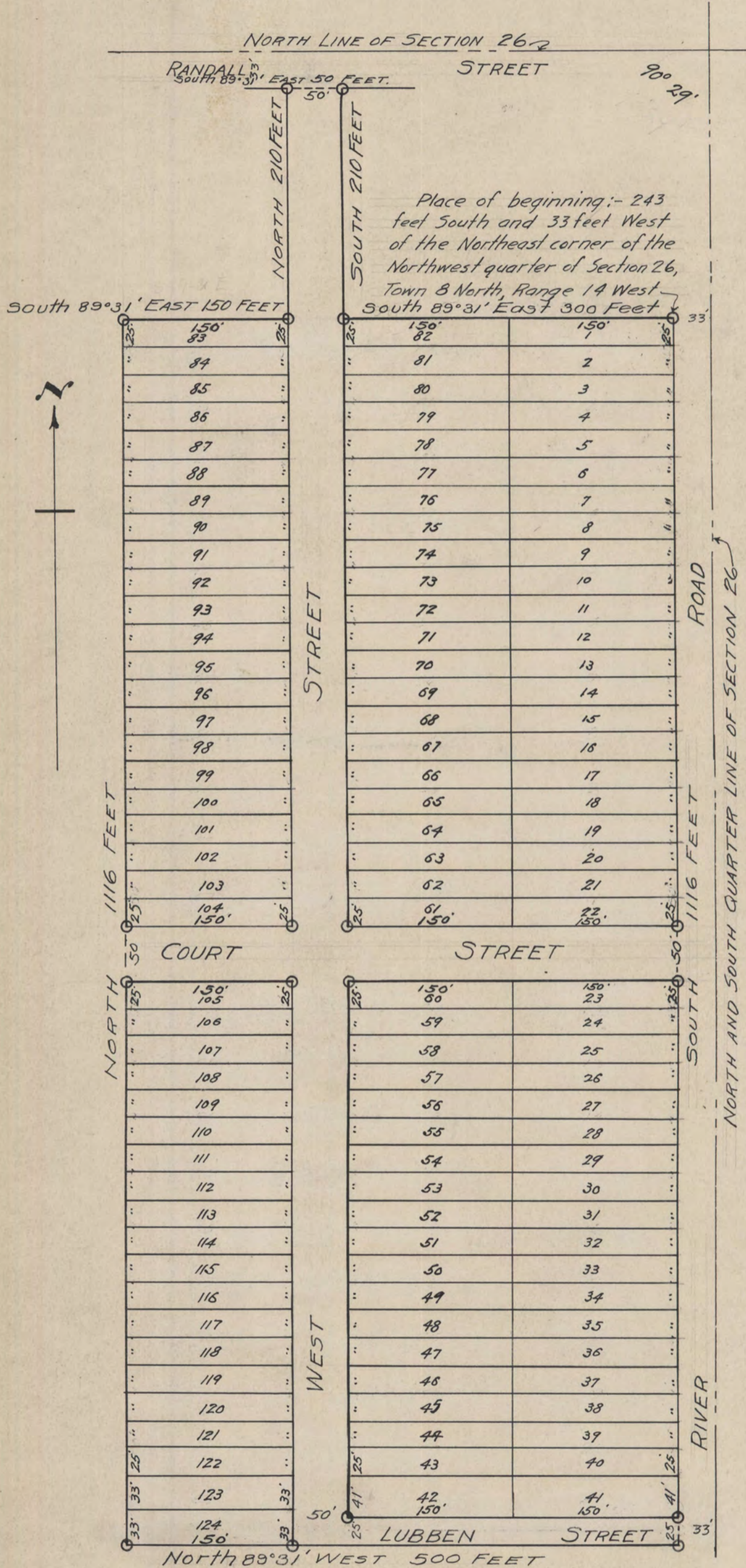
Surveyed and Platted by T. O. WILLIAMS, Kent Co. Surveyor.

June, 1916.

SCALE 1"=100'

Examined and Approved  
June 26-1916  
Mr. L. H. Houser  
County Auditor

See Affidavit in River 6 Misc. page 219



## DESCRIPTION

The land embraced in the annexed plat of River Road Addition to the Village of Coopersville, Polkton Township, Ottawa County, Michigan is described as:  
Commencing 243 feet South and 33 feet West of the Northeast corner of the Northwest quarter of Section 26, Town 8 North, Range 14 West; thence South 1116 feet; thence North 89°31' West 500 feet; thence North 1116 feet; thence South 89°31' East 150 feet; thence North 210 feet; thence South 89°31' East 50 feet; thence South 210 feet; thence South 89°31' East 300 feet to the place of beginning

## DEDICATION

presents  
Know all men by these that I, John Ter Avest, Trustee, have caused the land embraced in the annexed plat to be surveyed, laid out and platted to be known as "River Road Addition" to the Village of Coopersville, Polkton Township, Ottawa County, Michigan and that the streets and alleys as shown on said plat are hereby dedicated to the use of the public.

Signed and sealed in the presence of

Dean S. Gace \_\_\_\_\_  
H. H. Anderson Jr. Witnesses John Ter Avest Trustee

## NOTARY'S CERTIFICATE

STATE OF MICHIGAN } S.S.  
COUNTY OF Ottawa

On this 12th day of June 1916 before me, a Notary Public in and for said county, personally came the above named John Ter Avest, Trustee, known to me to be the person who executed the above dedication, acknowledged the same to be his free act and deed.

My Commission expires Nov. 11, 1918

Dean S. Gace  
NOTARY PUBLIC, Ottawa

## SURVEYOR'S CERTIFICATE

I hereby certify that the plat hereon delineated is a correct one, and that permanent monuments, consisting of 24 inch gas pipes have been planted at all points marked thus (O) as thereon shown at all angles in the boundaries of the land platted, and at all intersections of streets or streets and alleys.

T. O. Williams  
SURVEYOR

## CERTIFICATE OF MUNICIPAL APPROVAL

This plat was approved by the Village Council of the Village of Coopersville at a meeting held June 12 1916.



H. H. Anderson Jr.  
CLERK

## CERTIFICATE OF APPROVAL BY COUNTY BOARD

This plat was approved on the 17th day of June, 1916.

Edward P. Kirby Judge of Probate  
Jacob J. Herms County Clerk  
Fred Lovelace County Treasurer

## OFFICE OF COUNTY TREASURER

OTTAWA COUNTY Grand Haven, Mich., June 13, 1916

I hereby certify, That there are no tax liens or titles held by the State on lands described below, and that there are no tax liens or titles held by individuals on said lands for the five years preceding the 13 day of June 1916, and that the taxes for said period of five years are paid, as shown by the records of this office.

This certificate does not apply to taxes, if any, now in process of collection by township, city or village collecting officers.

Description: - Commencing 243 feet South and 33 feet West of the Northeast corner of the Northwest quarter of Section 26, Town 8 North, Range 14 West; thence South 1116 feet; thence North 89°31' West 500 feet; thence North 1116 feet; thence South 89°31' East 150 feet; thence North 210 feet; thence South 89°31' East 50 feet; thence South 210 feet; thence South 89°31' East 300 feet to the place of beginning

Ernest J. Gordon  
Deputy County Treasurer.

All measurements are in feet and decimals thereof.

State of Michigan, Ottawa County,  
REGISTER'S OFFICE,  
Received for record, the 27th  
day of June A. D. 1916  
at 9:30 o'clock, A. M. and  
Recorded in Liber 7  
of Plats on page 14  
John P. Van Arsdale  
Register of Deeds