

JUNE 2022



**NJ LAMINATES**  
PRICEBOOK



**INTRODUCTION**

General Information ..... 6  
 Terms & Conditions ..... 8  
 Care & Maintenance ..... 10

**STANDARDS**

Laminates & Grain Direction ..... 14  
 Pull Styles & Finishes ..... 16  
 Fabrics ..... 18

**PRODUCT**

Desking ..... 22  
 Storage & Filing ..... 26  
 Overhead Storage ..... 36  
 Bookcases ..... 40  
 Reception Desks ..... 42  
 Tables ..... 44  
 Worksurfaces ..... 50  
 Supports ..... 52  
 Lockers & Cubbies ..... 54  
 Divider Screens ..... 58  
 Gallery & Modesty Panels ..... 62  
 Modular Millwork ..... 64



INTRODUCTION



# GENERAL INFORMATION

---

## **TOPS & CASEGOODS**

All products can be made in TFL or HPL laminates. TFL worksurfaces are available in 1-1/8" and HPL are available in 1-1/4". All TFL units are finished on both sides with thermofused laminate. HPL products have a phenolic balancing backer to offer premium quality.

## **MODESTY PANELS**

Modesty panels come in two standard heights: Full-height (27.5") and Partial-height (18"). Full-height modesty panels are standard on BBF and FF pedestal units.

## **END PANELS**

End panels include height adjustable floor levelers and are edgebanded on the bottom for additional strength and to seal out moisture. A standard end panel is 27.5" with a 1/2" leveler creating a 28" end panel. TFL end panels are 1-1/8" thick and HPL end panels are 1-1/4" thick. End panels are the full depth of the worksurface unless otherwise specified. Mid and support panels are always 12" deep.

## **EDGES**

Unless otherwise specified or requested, all 1-1/8 and 1-1/4 products such as tops and end panels are finished with a 2MM PVC edgebanding. All 3/4" products such as casegoods are finished with a 1MM or 2MM edge. Contrasting edges are available at no up charge on stocked colors. If you wish to order a contrasting edge, please specify the edge finish on your purchase order. Depending on your order size, there may be an additional charge for custom colors. Edge profile options: Straight, Flat-tip knife. Joinery options: Butt-joint, Mitered

## **DRAWERS**

In the TFL line, the drawers are constructed from 1/2" melamine. In the HPL line, the drawers constructed from 1/2" prefinished plywood. Both constructions come standard with a 1/4" bottom. Optional upgrade to a full 1/2" complete bottom available. All drawers are mounted on 100 lbs (45kgs) full suspension slides. File pedestals file letter front to back and legal side to side. Lateral file units file letter front to back and legal side to side. Interlock systems are standard for all lateral and vertical files units.

## **LEVELERS**

Levelers are standard on all products except for mobile units and upper storage units. Levelers are adjustable from 1/2" to 1-1/2" high. All toekick products come standard with an internal leveler that will be adjusted from the inside of the cabinet with a ballnose 8mm allen wrench.

Your furniture is equipped with heavy duty adjustable leveling glides. After the drawers and shelves are loaded and furniture is placed in its final position, levels should be checked. All moving parts such as drawers and doors will function correctly when the unit is leveled. All mechanical parts are precisely adjusted prior to shipment, however, during transit, mechanisms such as drawer slides, hinges, and locks can jar out of alignment. After proper leveling, should any of these items not operate, we suggest you contact us for appropriate service.

## **LOCKS**

Locks come standard on all storage, filing, and lockers. All multi-drawer units utilize a central locking system. Filing above 24" wide will include a dual-side locking system to ensure no drawer twist. Lock finish will match handle finish.

## **GROMMETS**

Grommets are 60MM and come in black, white, and grey. Other sizes are available upon request. If no grommet finish is specified, black will be provided. Location as follow, unless noted otherwise:

## **HANDLES**

We offer several handle and knob styles in various finishes. There is no up charge for any of our standard handles. Please specify your style and finish on your purchase order. Please refer to our website or literature for the most up to date selection. If no handle is specified, the standard straight black handle will be provided.

---

## **TO ORDER**

When ordering product, you must specify the following:

Laminate color:

Edge: (only if you are using a contrasting edge)

Pull Type:

Pull Finish:

Grommet Color:

## **ACCURACY**

To ensure complete and accurate orders, NJL requires that all orders be submitted in writing via

Email to [orders@njlaminates.com](mailto:orders@njlaminates.com). In the event of a discrepancy between the product code/SKU and product description, NJL will process the order based on the product code. Do not attempt to modify a standard item using a description. NJL takes no responsibility for production errors based on purchase orders with descriptions.

The purchaser is responsible to submit a complete purchase order at the time of ordering. Acknowledgment will not be provided for incomplete or incorrect orders until the missing information is provided.

Orders on credit hold will only be given a completion date once the account has been released. Orders which require a drawing cannot be processed until an approved factory shop drawing has been produced and signed off on. Changes to orders or drawings are only permitted within 5 days of ordering. Changes will result in additional charges and a new completion date.

## **CUSTOM PRODUCT**

Upon receipt of order, shop drawings will be created for approval. No material will be ordered and production will not begin without the approved shop drawings. All shop drawings require a customer signature to be considered "approved." Once shop drawings are approved, the acknowledgment will be sent. It is the client's responsibility to check the acknowledgment for accuracy.

## **TERMS**

All orders over \$1,000 require a 50% deposit. Material will not be ordered without receipt of deposit. Final invoices will be sent upon product completion. Customers first order will be pre-pay and terms will follow based on credit history. The customer agrees that NJL shall have the right to enforce a charge amounting to 1.5% per month (18% per year) on invoices outstanding more than 30 days. Shall the buyer fail to fulfil the above mentioned terms of payment, NJL reserves the right to defer further shipments.

## **ORDER ACKNOWLEDGMENTS**

Orders will be acknowledged by NJL within 48-72 hours of receipt of a clean order or shop drawing approval. It is the responsibility of the dealer to ensure that the information on the acknowledgment is exactly as specified on your purchase order. Orders will be produced from the acknowledgment. NJL will not be responsible for any errors. The date on the acknowledgment is the production completion date. Orders may be picked up the next day after the completion date. For orders being shipped, transit time is additional. NJL order acknowledgment will state a completion date, which is a best estimate at the time the order is placed. However, NJL shall not incur any obligation or liability to the purchaser for failure to ship by the specified date unless NJL has agreed to an unequivocal firm shipping date in a separately signed written document executed by authorized personnel. NJL has no liability for any failure to deliver or perform any obligation, or any delay in delivering or performing any obligation, due to any cause outside the reasonable control of NJL, including but not limited to, fire, flood, bad weather, war terrorism, civil disturbance, riot, act of government, government regulation, governmental restriction or export or import, currency restriction, labor dispute, strike, plant shutdown, unavailability of materials, equipment failure or failure of supplier, carrier or subcontractor to deliver on time or otherwise perform.

## **ACKNOWLEDGED/COMPLETION DATE**

Completion date refers to the date that manufacturing will be completed. This is not the pick-up date or shipping arrival date. Local orders can be picked up 72 hours after

# TERMS & CONDITIONS

---

the acknowledged date. For orders that require shipping, please speak with representative for the ship and/or delivery date.

## **PRICES**

All prices are LIST. Prices are subject to change without notice. All descriptions, illustrations and prices in this book are based on the most up to date information at the time of printing. Every effort has been made to ensure accuracy throughout the price list however, NJL reserves the right to modify or replace the item without notice.

## **ORDER CHANGES**

Any changes to an order with standard product must be received in writing no later than 48 hours following our receipt of the original purchase order. Any changes to the original order after 48 hours, if approved, will be subject to production rescheduling and associated costs in the event that production is already underway. Quick ship orders are not subject to any change. Custom orders cannot be changed without penalty after shop drawings are approved. If a change is needed, a fee may be charged.

## **ORDER CANCELLATIONS**

Cancellations must be requested in writing no later than 48 hours after receipt of the original order and are subject to approval by NJL. Cancellations cannot be accepted otherwise. Custom orders cannot be cancelled without penalty after shop drawings are approved. If an order is cancelled after the shop drawings are approved, there will be a 25% cancellation fee if no product has been ordered. If product has been ordered, there will be a 50% cancellation fee.

## **LEAD TIMES**

Quick ship products have a 5 business day lead time. Standard TFL and HPL products have a 10-15 business day lead time. Custom HPL products have a 4-6 week lead time. Custom materials such as glass, stone, and metal can increase the lead time on all products and will be noted on the quote.

## **RETURNS**

No returns will be accepted on any NJL products.

NJL reserves the right to institute changes in material and design as well as to discontinue any items at any time without prior written notice.

## **OWNERSHIP OF GOODS**

NJL or its agent will retain full ownership of the goods listed on invoices until the full amount is totally remitted. Since all goods must be ordered by an official purchase order showing the agreed terms and other pertinent details, the dealer distributor agrees to above conditions and would be responsible in a court of law for all expenses incurred by NJL to recover amounts due. This is understood as being part of the buying conditions.

## **SHOWROOM**

NJL has a working showroom that is open to walk-in clients. However, to ensure there is someone there to review your project, appointments are strongly suggested.

## **SAMPLE POLICY**

NJL does not charge for samples, laminates, handles, edge samples or literature. We ask that you use our marketing materials form when requesting samples. We will only ship samples to an authorized NJL dealer.

## **SUSPENSION**

In the event that the dealer/purchaser defaults in the payment of any sum due to NJL, or in the event the purchaser's financial condition becomes unsatisfactory to NJL we shall have the right to defer or discontinue shipment of any goods until such time as the default is cured or assurance of payment is received by NJL.

## **DISCLAIMER**

Prices shown are NJL current list prices at the time of printing. All applicable taxes apply. Descriptions, specifications and prices are subject to change without notice. Errors and omissions are subject to correction.

## **PICK UP, FREIGHT & PACKAGING**

Appointments for dealers picking up orders are required. If you require us to load your truck or trailer, additional charges may incur.



---

### **FREIGHT CLAIMS/SHORTAGES/CONCEALED DAMAGE**

All NJL products are carefully packed and thoroughly inspected before leaving the factory. NJL is not responsible for damage which occurs in transit or in storage. The carrier signs for all goods received in good order from NJL. It is the purchaser's responsibility to examine goods upon receipt and file any claims with NJL. Shortages, damages, and defects must be noted at the time of delivery on the Bill of Lading prior to signing for delivery. NJL must be notified about concealed damages in writing within five (5) business days after any delivery. Original box must be kept to show box condition. Failure by the purchaser to make any claim against NJL within the five (5) days shall constitute acceptance of the goods and waive the right to claim any apparent defects, errors or shortage.

### **FREIGHT TERMS**

All goods are sold for pick up unless otherwise arranged. All shipments are direct from NJL to Dealer's dock. The following services can be arranged for an extra charge: delivery and installation, over time delivery, non-union, union, and prevailing wage delivery. Special requests must be made in writing with customer service. NJL will provide customers with an anticipated day of delivery. Every effort is made to adhere to the prescribed delivery date, however, neither NJL nor the carrier will guarantee, or be held responsible in any manner for delays or deviation from the planned delivery date. Drivers are not responsible or permitted to assist in the off load of product. NJL is not responsible for any costs incurred for late deliveries, including labor or other charges resulting from unforeseen delays.

### **PACKAGING**

When delivering within 150 miles of northern NJ, NJL will be shipping blanket-wrapped. This allows your receiving warehouse to thoroughly inspect the furniture upon receipt.

### **WARRANTY**

NJL warranty applies to products manufactured after January 1, 2021 to the original purchaser and purchaser location. NJ Laminates warrants that NJ Laminates products conform to specifications, drawings, samples, or

other product descriptions furnished by NJ Laminates, [and are of good material and workmanship, free of manufacturing and factory defects, and will function properly under normal use and service for ten **years** if installed by NJ Laminates/East Coast Office Furniture Services or an authorized NJ Laminates dealer. The warranty set forth above does not apply to products modified, altered, or repaired by unauthorized personnel, or to products damaged during shipment or installation, or by accident, abuse, alteration, misuse, tampering, misapplication, negligence by others, improper repair or maintenance, fire and/or other casualty. This warranty does not apply to defects in components not manufactured by NJ Laminates.

It is expressly understood and agreed that the customer's sole and exclusive remedy for any and all losses or damages resulting from non-conforming goods, or from any other causes, shall be the repair or replacement of defective parts at the option of NJ Laminates, and that NJ Laminates shall not be liable for damages, for injury to persons or property, nor for replacement of the entire commercial unit, if repair or replacement of defective parts can reasonably render the unit conforming.

NJ Laminates makes no other warranties either expressed or implied, as to any matter whatsoever, and NJ Laminates disclaims any warranty of merchantability or fitness for a particular use or purpose. No officer, employee, or representative of NJ Laminates has the authority to assume greater liability than that described above. When repairing or replacing a defective product, NJL does not guarantee matching color, grain texture or dye lots. This warranty does not cover the cost of transportation or labor. Under no circumstances shall NJL be liable for accidental or consequential damages.

Our furniture functions best in proper conditions, including in temperatures between 55 and 78° F, in relative humidity of 43 to 70%, and in interiors that are shielded from direct sunlight. Failure to maintain proper conditions and to shield from direct sunlight will void any and all NJ Laminates warranties.

# CARE & MAINTENANCE

---

## **CARE AND MAINTENANCE**

Use a clean, damp, nonabrasive cotton cloth and a mild liquid detergent or household cleaner. Clean the soiled area using a rotating motion. Do not use hot water or any abrasive cleaning surface. Next, rinse with clean water, using a clean, non-abrasive cotton cloth. Please take care not to flood the laminate, especially near seams, since water can penetrate and cause the substrate to swell. Dry the surface with a soft, clean, non-abrasive cotton cloth.

## **REPAIRS**

Liability for replacement items will be limited to replacement or repair. NJL will not issue credit allowances for any repairs without prior consent. NJL will provide parts or complete units but we will not be responsible for labor costs.

## **REPLACEMENT PARTS & DEFICIENCIES**

Requests for replacement parts or units must be sent in writing. Please include pictures showing the deficiency. Replacement parts will be processed as a priority. Please consult with customer service for delivery lead time. Please note, we do not ship replacement parts or units to site or any other location other than the dealer's warehouse unless quoted separately.

## **SERVICE**

Service requests are the responsibility of NJL's authorized dealers. Please refer all service problems to NJL customer service department. Proof of delivery is the only official document accepted by NJL for any claim. Consent from NJL must be obtained before any warranty work is performed.





STANDARDS

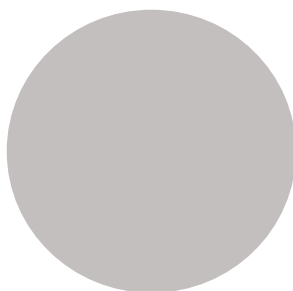


# LAMINATES & GRAIN DIRECTION

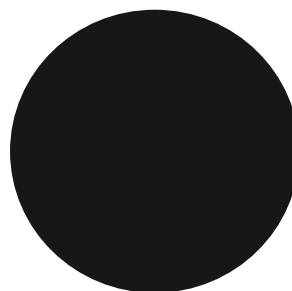
---



**\*Designer White (DW)**  
D354-60



**Platinum (PL)**  
D315-60



**Black (BL)**  
1595-60



**\*Manitoba Maple (MM)**  
7911-60



**\*Fawn Cypress (FC)**  
8208K-16



**\*Pinnacle Walnut (PW)**  
7992-38



**\*Wild Cherry (WC)**  
7054-60



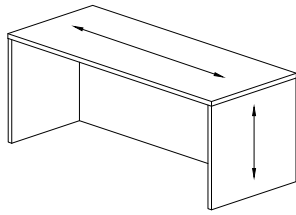
**Florence Walnut (FW)**  
7993-38



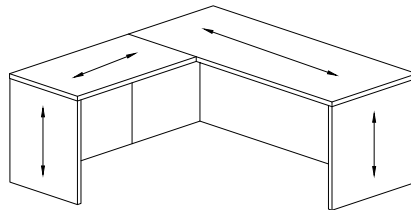
**\*Sterling Ash (SA)**  
7995-38

In addition to the above, we offer the full line of Formica, Wilsonart, Pionite, Tafisa & Nevemar laminates including gloss, ColorCore, Infiniti, SOLICOR, Traceless, and Antimicrobial options for an additional cost and lead time.

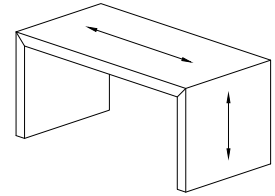
\*Options available as part of our quickship program.



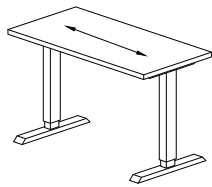
Desks



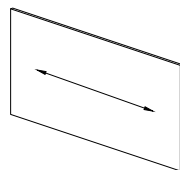
L-Desks



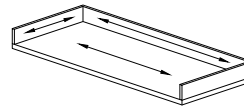
Parsons



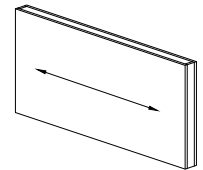
Height-Adjustable Table



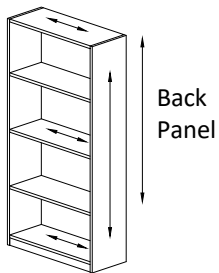
Modesty Panels & Finished Backs



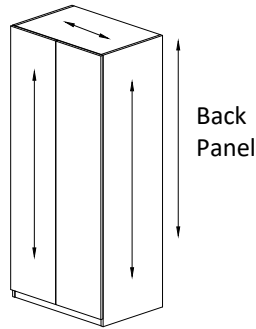
Counters, Back & Side Splashes



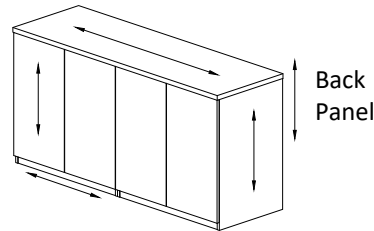
Wall Access Panel



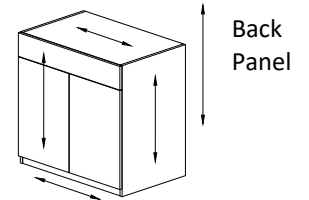
Bookcases



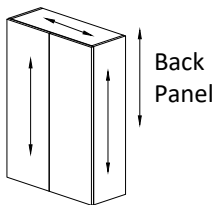
Towers



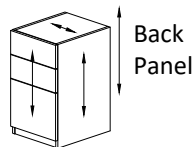
Credenzas



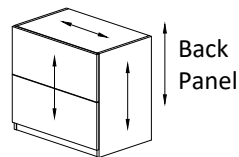
Base Cabinets



Wall Hung Cabinets



Pedestals



Lateral Files

# PULL STYLES & FINISHES

---

We offer several style pulls in various finishes. Please specify your pull style and finish on your purchase order. There is no up charge for any of our standard handles. Specialty handles are \$25 additional per handle. If no handle is specified, the Contemporary Pull in White will be provided.

## STANDARD

### Contemporary Pull (CP)

---



Aluminum  
Chrome  
Stainless Steel  
White  
Brushed Black

### Wire Pull (WP)

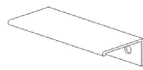
---



Brushed Nickel  
Chrome  
Matte Black

### Edge Pull (EP)

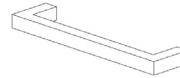
---



Aluminum  
Chrome  
Stainless Steel  
White  
Brushed Black

### Square Pull (WP)

---



Brushed Nickel  
Polished Nickel  
Matte Black

## SPECIALTY

### Flat Arc Pull (AP)

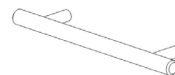
---



Brushed Nickel  
Matte Chrome

### Bar Pull (BP)

---



Brushed Nickel  
Chrome  
Matte Black

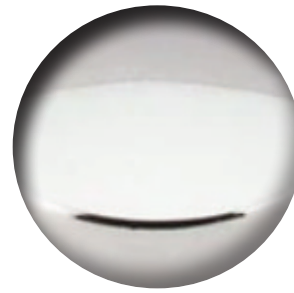




Aluminum (AL)



Brushed Nickel (BN)



Polished Nickel (PN)



Stainless Steel (SS)



Matte Chrome (MC)



Chrome (CH)



White (WH)



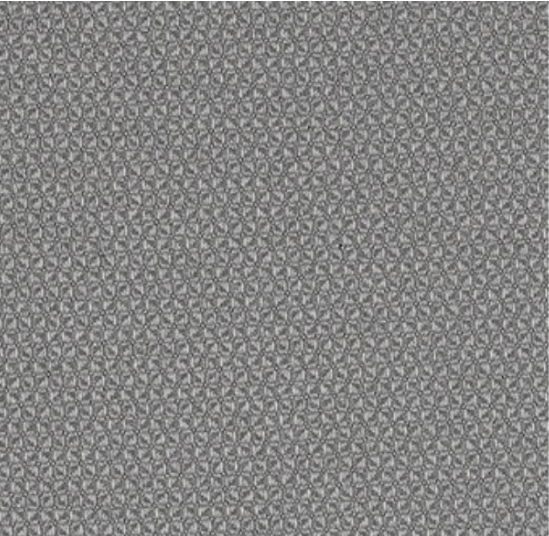
Matte Black (MB)



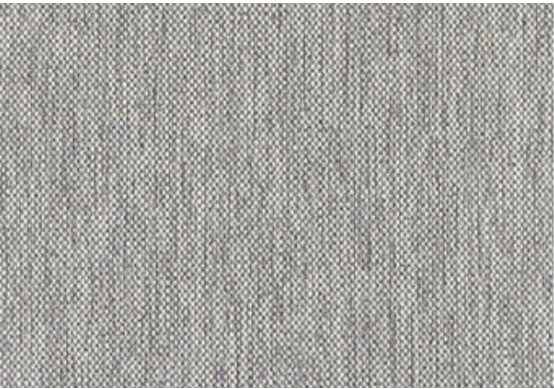
Brushed Black (BB)

# FABRICS

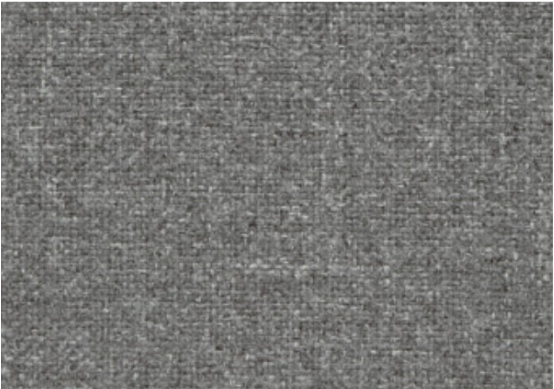
**Zone** | Vertical Surface



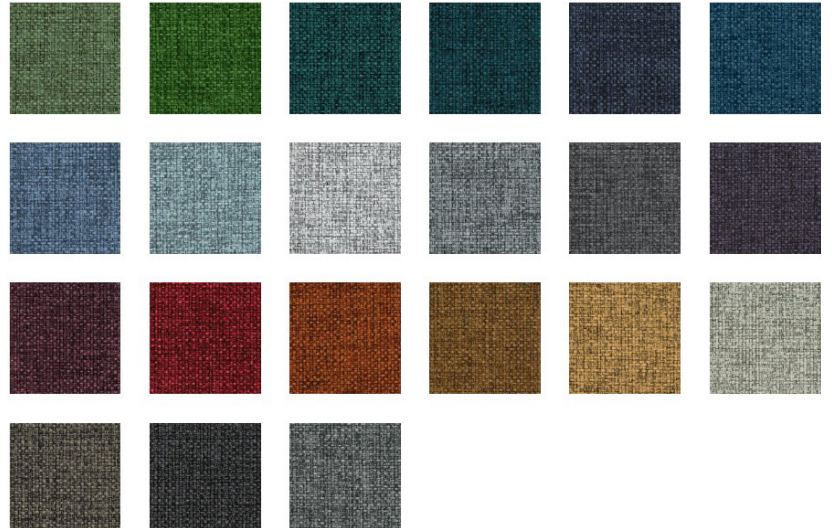
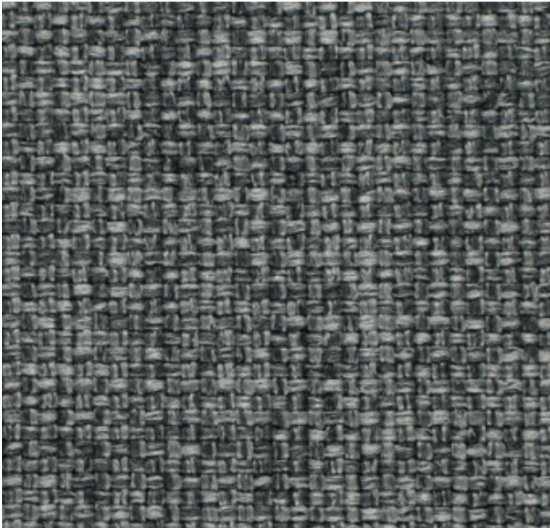
**Shift** | Vertical Surface



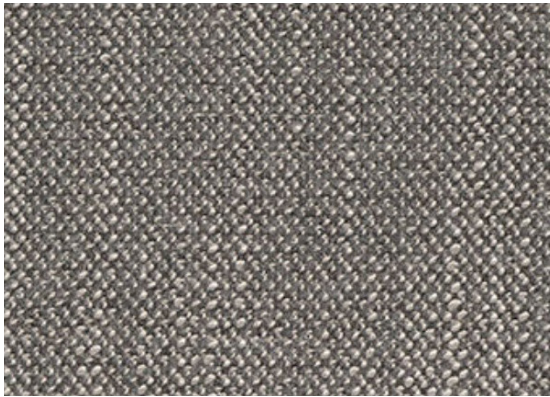
**Multipurpose** | Vertical Surface & Seating



**Merge** | Seating



**Homestead** | Seating



**Felt** | PET Panels





PRODUCT

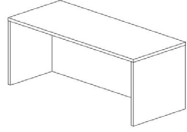


# DESKING

Item	Model Number	D	W	H	TFL List	HPL List
------	--------------	---	---	---	----------	----------

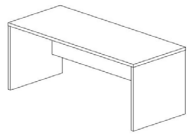
## Desk Shells

### Straight Desk with Full Modesty Panel



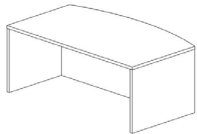
<b>DS3048FM</b>	30	48	29	\$652	\$1,076
<b>DS3060FM</b>	30	60	29	\$692	\$1,142
<b>DS3066FM</b>	30	66	29	\$725	\$1,196
<b>DS3072FM</b>	30	72	29	\$738	\$1,218
<b>DS3672FM</b>	36	72	29	\$974	\$1,607

### Straight Desk with Partial Modesty Panel



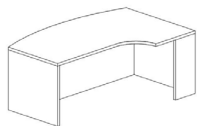
<b>DS3048PM</b>	30	48	29	\$652	\$1,076
<b>DS3060PM</b>	30	60	29	\$692	\$1,142
<b>DS3066PM</b>	30	66	29	\$725	\$1,196
<b>DS3072PM</b>	30	72	29	\$738	\$1,218
<b>DS3672PM</b>	36	72	29	\$974	\$1,607

### Bow Front Desk with Full Modesty Panel



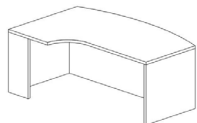
<b>DSB3060</b>	30/36	60	29	\$1,085	\$1,790
<b>DSB3066</b>	30/36	66	29	\$1,115	\$1,840
<b>DSB3072</b>	30/36	72	29	\$1,143	\$1,886

### Left Corner Desk with Full Modesty Panel



<b>DSL4260</b>	30/36/42	60	29	\$1,040	\$1,716
<b>DSL4266</b>	30/36/42	66	29	\$1,064	\$1,756
<b>DSL4272</b>	30/36/42	72	29	\$1,095	\$1,807

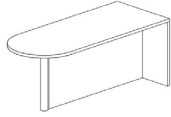
### Right Corner Desk with Full Modesty Panel



<b>DSRC4260</b>	30/36/42	60	29	\$1,040	\$1,716
<b>DSRC4266</b>	30/36/42	66	29	\$1,064	\$1,756
<b>DSRC4272</b>	30/36/42	72	29	\$1,095	\$1,807

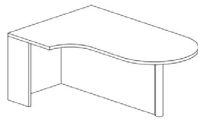
Item	Model Number	D	W	H	TFL List	HPL List
------	--------------	---	---	---	----------	----------

**Bullet Top Desk with Post Leg**



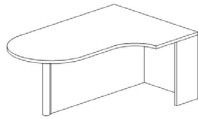
<b>DSB3060</b>	30	60	29	\$696	\$1,148
<b>DSB3066</b>	30	66	29	\$727	\$1,200
<b>DSB3072</b>	30	72	29	\$735	\$1,213

**Left Bullet Top Desk with Full Modesty Panel**



<b>DSLB4260</b>	30/42	60	29	\$970	\$1,601
<b>DSLB4266</b>	30/42	66	29	\$1,015	\$1,675
<b>DSLB4272</b>	30/42	72	29	\$1,061	\$1,751

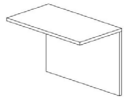
**Right Bullet Top Desk with Full Modesty Panel**



<b>DSRB4260</b>	30/42	60	29	\$970	\$1,601
<b>DSRB4266</b>	30/42	66	29	\$1,015	\$1,675
<b>DSRB4272</b>	30/42	72	29	\$1,061	\$1,751

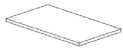
**Bridges**

**Bridge with Full Modesty Panel (Includes 4 Flat Plates)**



<b>B2036</b>	20	36	29	\$369	\$609
<b>B2042</b>	20	42	29	\$440	\$726
<b>B2042</b>	20	48	29	\$446	\$736
<b>B2436</b>	24	36	29	\$369	\$609
<b>B2442</b>	24	42	29	\$440	\$726
<b>B2448</b>	24	48	29	\$446	\$736

**Bridge without Modesty (Includes 4 Flat Plates)**



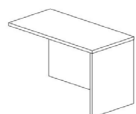
<b>B2036NM</b>	20	36	29	\$68	\$112
<b>B2042NM</b>	20	42	29	\$76	\$125
<b>B2048NM</b>	20	48	29	\$84	\$139
<b>B2436NM</b>	24	36	29	\$68	\$112
<b>B2442NM</b>	24	42	29	\$76	\$125
<b>B2448NM</b>	24	48	29	\$84	\$139

# DESKING

Item	Model Number	D	W	H	TFL List	HPL List
------	--------------	---	---	---	----------	----------

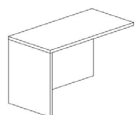
## Returns

### Right Return with Full Modesty Panel (Includes 2 Flat Plates)



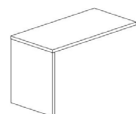
<b>RSR2036</b>	20	36	29	\$551	\$909
<b>RSR2042</b>	20	42	29	\$586	\$967
<b>RSR2048</b>	20	48	29	\$615	\$1,015
<b>RSR2436</b>	24	36	29	\$551	\$909
<b>RSR2442</b>	24	42	29	\$586	\$967
<b>RSR2448</b>	24	48	29	\$615	\$1,015

### Left Return with Full Modesty Panel (Includes 2 Flat Plates)



<b>RSL2036</b>	20	36	29	\$551	\$909
<b>RSL2042</b>	20	42	29	\$586	\$967
<b>RSL2048</b>	20	48	29	\$615	\$1,015
<b>RSL2436</b>	24	36	29	\$551	\$909
<b>RSL2442</b>	24	42	29	\$586	\$967
<b>RSL2448</b>	24	48	29	\$615	\$1,015

### Return Shell without Modesty (Includes 2 Flat Plates)



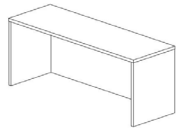
<b>RSL2036NM</b>	20	36	29	\$68	\$112
<b>RSL2042NM</b>	20	42	29	\$76	\$125
<b>RSL2048NM</b>	20	48	29	\$84	\$139
<b>RSL2436NM</b>	24	36	29	\$68	\$112
<b>RSL2442NM</b>	24	42	29	\$76	\$125
<b>RSL2448NM</b>	24	48	29	\$84	\$139



Item	Model Number	D	W	H	TFL List	HPL List
------	--------------	---	---	---	----------	----------

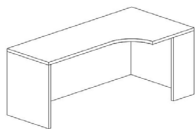
**Credenza Shells**

**Credenza Shell with Full Modesty Panel**



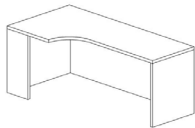
<b>CS2060</b>	20	60	29	\$645	\$1,064
<b>CS2066</b>	20	66	29	\$668	\$1,102
<b>CS2072</b>	20	72	29	\$690	\$1,139
<b>CS2460</b>	24	60	29	\$645	\$1,064
<b>CS2466</b>	24	66	29	\$668	\$1,102
<b>CS2472</b>	24	72	29	\$690	\$1,139

**Left Corner Credenza Shell with Full Modesty Panel**



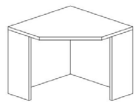
<b>CSL3660</b>	24/36	60	29	\$917	\$1,513
<b>CSL3666</b>	24/36	60	29	\$1,026	\$1,693
<b>CSL3672</b>	24/36	72	29	\$1,080	\$1,782

**Right Corner Credenza Shell with Full Modesty Panel**



<b>CSR3660</b>	24/36	66	29	\$917	\$1,513
<b>CSR3666</b>	24/36	66	29	\$1,026	\$1,693
<b>CSR3672</b>	24/36	72	29	\$1,080	\$1,782

**Corner Shell with Full Modesty Panel**



<b>DSC3636</b>	36	36	29	\$623	\$1,028
----------------	----	----	----	-------	---------

# STORAGE & FILING

Item	Model Number	D	W	H	TFL List	HPL List
------	--------------	---	---	---	----------	----------

## Pedestals

### Freestanding Box/Box/File



<b>BFF22T</b>	22	15.5	29	\$764	\$1,146
<b>BFF24T</b>	24	15.5	29	\$782	\$1,173

### Open Top Box/Box/File



<b>BBF18</b>	18	15.5	28	\$764	\$1,146
<b>BBF22</b>	22	15.5	28	\$782	\$1,173
<b>BBF24</b>	24	15.5	28	\$801	\$1,202

### Freestanding File/File



<b>FF22T</b>	22	15.5	29	\$726	\$1,089
<b>FF22T</b>	24	15.5	29	\$744	\$1,116

### Open Top File/File



<b>FF18</b>	18	15.5	28	\$726	\$1,089
<b>FF22</b>	22	15.5	28	\$744	\$1,116
<b>FF24</b>	24	15.5	28	\$763	\$1,145

### Hanging Box/File



<b>BF18</b>	18	15.5	21	\$672	\$1,008
<b>BF22</b>	22	15.5	21	\$690	\$1,035

Item	Model Number	D	W	H	TFL List	HPL List
------	--------------	---	---	---	----------	----------

**Mobile Box/File**

	<b>BF22M</b>	18	15.5	24	\$696	\$1,044
--	--------------	----	------	----	-------	---------



**Mobile Box/Box/File**

	<b>BBF22M</b>	22	15.5	28	\$713	\$1,070
--	---------------	----	------	----	-------	---------



**Mobile File/File**

	<b>FF22M</b>	22	15.5	28	\$713	\$1,070
--	--------------	----	------	----	-------	---------



**Pedestal Cushion** | Note: Refer to pages 18-19 for standard fabric options.

	<b>PC18</b>	18	15.5	1	\$195	\$293
	<b>PC22</b>	22	15.5	1	\$210	\$315
	<b>PC24</b>	24	15.5	1	\$226	\$339



# STORAGE & FILING

Item	Model Number	D	W	H	TFL List	HPL List
------	--------------	---	---	---	----------	----------

**Lateral Files** | Note: All lateral files to have anti-tip mechanism.

## 2-Drawer



<b>LF230T</b>		22	30	29	\$1,055	\$1,583
<b>LF236T</b>		22	36	29	\$1,141	\$1,712

## Open Top 2-Drawer



<b>LF230</b>		22	30	28	\$955	\$1,433
<b>LF236</b>		22	36	28	\$1,041	\$1,562

## 3-Drawer



<b>LF330T</b>		22	30	42	\$1,333	\$2,000
<b>LF336T</b>		22	36	42	\$1,468	\$2,202

## Open Top 3-Drawer



<b>LF330</b>		22	30	41	\$1,233	\$1,850
<b>LF336</b>		22	36	41	\$1,368	\$2,052

## 4-Drawer



<b>LF430T</b>		22	30	54	\$1,813	\$2,720
<b>LF436T</b>		22	36	54	\$1,923	\$2,885

## Open Top 4-Drawer



<b>LF430</b>		22	30	53	\$1,713	\$2,570
<b>LF436</b>		22	36	53	\$1,823	\$2,735

Item	Model Number	D	W	H	TFL List	HPL List
------	--------------	---	---	---	----------	----------

**Combination Files**

**2-Drawer Personal File**



<b>PF224T</b>	22	24	22	\$851	\$1,277
<b>PF230T</b>	22	30	22	\$920	\$1,380
<b>PF236T</b>	22	36	22	\$990	\$1,485

**Open Top 2-Drawer Personal File**



<b>PF224</b>	22	24	22	\$751	\$1,127
<b>PF230</b>	22	30	22	\$820	\$1,230
<b>PF236</b>	22	36	22	\$890	\$1,335

**Multitier**



<b>MF30T</b>	22	30	28	\$1,300	\$1,950
<b>MF36T</b>	22	36	28	\$1,384	\$2,076

**Open Top Multitier**



<b>MF30</b>	22	30	28	\$1,240	\$1,860
<b>MF36</b>	22	36	28	\$1,320	\$1,980

**Common Top (Thickness: 1-1/8" TFL & 1-1/4" HPL)**



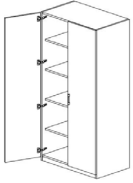
<b>COM2260</b>	22	60	Varies	\$426	\$639
<b>COM2266</b>	22	66	Varies	\$431	\$647
<b>COM2272</b>	22	72	Varies	\$436	\$654
<b>COM2284</b>	22	84	Varies	\$441	\$662
<b>COM2290</b>	22	90	Varies	\$447	\$671

# STORAGE & FILING

Item	Model Number	D	W	H	TFL List	HPL List
------	--------------	---	---	---	----------	----------

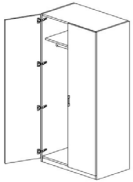
## Tall Cabinets

### Adjustable (Includes 4 Adjustable Shelves)



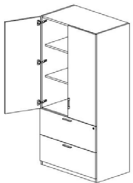
<b>TC24SH</b>	24	24	65	\$1,543	\$2,315
<b>TC30SH</b>	24	30	65	\$1,689	\$2,534
<b>TC36SH</b>	24	36	65	\$1,762	\$2,643

### Wardrobe Bar (Includes 1 Fixed Shelf)



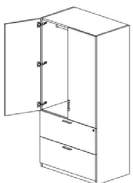
<b>TC24WB</b>	24	24	65	\$1,692	\$2,538
<b>TC30WB</b>	24	30	65	\$1,765	\$2,648
<b>TC36WB</b>	24	36	65	\$1,822	\$2,733

### Lateral File & Shelves (Includes 2 Adjustable Shelves)



<b>TC24LFSH</b>	24	24	65	\$1,805	\$2,708
<b>TC30LFSH</b>	24	30	65	\$1,879	\$2,819
<b>TC36LFSH</b>	24	36	65	\$1,972	\$2,958

### Lateral File & Wardrobe (No shelves)



<b>TC24LFWB</b>	24	24	65	\$1,805	\$2,708
<b>TC30LFWB</b>	24	30	65	\$1,879	\$2,819
<b>TC36LFWB</b>	24	36	65	\$1,972	\$2,958

Item	Model Number	D	W	H	TFL List	HPL List
------	--------------	---	---	---	----------	----------

**Wardrobes**

**File/File Wardrobe (Includes 1 Adjustable Shelf)**



<b>FFW2448D</b>	24	24	48	\$1,614	\$2,421
<b>FFW3048D</b>	24	30	48	\$1,655	\$2,483
<b>FFW3648D</b>	24	36	48	\$1,691	\$2,537

**Box/Box/File Wardrobe (Includes 1 Adjustable Shelf)**



<b>BBFW2448D</b>	24	24	48	\$1,728	\$2,592
<b>BBFW3048D</b>	24	30	48	\$1,800	\$2,700
<b>BBFW3648D</b>	24	36	48	\$1,877	\$2,816

**File/File Wardrobe (Includes 1 Adjustable Shelf)**



<b>FFW2448</b>	24	24	48	\$1,728	\$2,592
<b>FFW3048</b>	24	30	48	\$1,800	\$2,700
<b>FFW3648</b>	24	36	48	\$1,877	\$2,816

**Box/Box/File Wardrobe (Includes 1 Adjustable Shelf)**



<b>BBFW2448</b>	24	24	48	\$1,728	\$2,592
<b>BBFW3048</b>	24	30	48	\$1,800	\$2,700
<b>BBFW3648</b>	24	36	48	\$1,877	\$2,816

# STORAGE & FILING

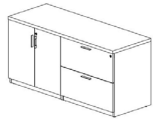
Item	Model Number	D	W	H	TFL List	HPL List
<b>Credenzas</b>   Note: All credenzas ship separately to be ganged on-site. For seamless back order Credenza Shell.						

## Double Lateral File



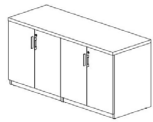
<b>LF60CR</b>	22	60	29	\$1,567	\$2,351
<b>LF66CR</b>	22	66	29	\$1,609	\$2,414
<b>LF72CR</b>	22	72	29	\$1,650	\$2,475

## Combination Lateral File & Storage (Includes 1 Adjustable Shelf)



<b>LFS60CR</b>	22	60	29	\$1,591	\$2,387
<b>LFS66CR</b>	22	66	29	\$1,632	\$2,448
<b>LFS72CR</b>	22	72	29	\$1,672	\$2,508

## 4-Door Storage (Includes 1 Adjustable Shelf)



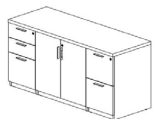
<b>SC60CR</b>	22	60	29	\$1,459	\$2,189
<b>SC66CR</b>	22	66	29	\$1,500	\$2,250
<b>SC72CR</b>	22	72	29	\$1,540	\$2,310

## File File / Doors / File File (Includes 1 Adjustable Shelf)



<b>FFSFF60CR</b>	22	60	29	\$1,658	\$2,487
<b>FFSFF66CR</b>	22	66	29	\$1,755	\$2,633
<b>FFSFF72CR</b>	22	72	29	\$1,867	\$2,801

## Box Box File / Doors / File File (Includes 1 Adjustable Shelf)



<b>BBFSFF60CR</b>	22	60	29	\$1,658	\$2,487
<b>BBFSFF66CR</b>	22	66	29	\$1,755	\$2,633
<b>BBFSFF72CR</b>	22	72	29	\$1,867	\$2,801



Item	Model Number	D	W	H	TFL List	HPL List
------	--------------	---	---	---	----------	----------

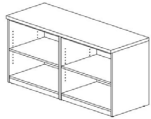
**Credenzas** | Note: All credenzas ship separately to be ganged on-site. For seamless back order Credenza Shell.

**Box Box File / Doors / Box Box File** (Includes 1 Adjustable Shelf)



<b>BBFSBBF60CR</b>	22	60	29	\$1,658	\$2,487
<b>BBFSBBF66CR</b>	22	66	29	\$1,755	\$2,633
<b>BBFSBBF72CR</b>	22	72	29	\$1,867	\$2,801

**Double Bookcase** (Includes 2 Adjustable Shelves)



<b>BC60CR</b>	22	60	29	\$1,110	\$1,665
<b>BC66CR</b>	22	66	29	\$1,151	\$1,727
<b>BC72CR</b>	22	72	29	\$1,191	\$1,787

**File File / Bookcase / File File** (Includes 1 Adjustable Shelf)



<b>FFBCFF60CR</b>	22	60	29	\$1,687	\$2,531
<b>FFBCFF66CR</b>	22	66	29	\$1,783	\$2,675
<b>FFBCFF72CR</b>	22	72	29	\$1,896	\$2,844

**Box Box File / Bookcase / Box Box File** (Includes 1 Adjustable Shelf)



<b>BBFBCBFF60CR</b>	22	60	29	\$1,687	\$2,531
<b>BBFBCBFF66CR</b>	22	66	29	\$1,783	\$2,675
<b>BBFBCBFF72CR</b>	22	72	29	\$1,896	\$2,844

**Box Box File / Bookcase / File File** (Includes 1 Adjustable Shelf)



<b>BBFBCFF60CR</b>	22	60	29	\$1,687	\$2,531
<b>BBFBCFF66CR</b>	22	66	29	\$1,783	\$2,675
<b>BBFBCFF72CR</b>	22	72	29	\$1,896	\$2,844

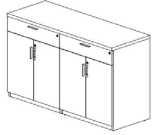
# STORAGE & FILING

Item	Model Number	D	W	H	TFL List	HPL List
------	--------------	---	---	---	----------	----------

**Credenzas** | Note: All credenzas ship separately to be ganged on-site. For seamless back order Credenza Shell.

**Buffet Height** (Includes 1 Adjustable Shelf)

	<b>SC226036D</b>	22	60	36	\$2,973	\$4,460
--	------------------	----	----	----	---------	---------



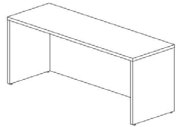
**Low Height** (Includes 1 Adjustable Shelf)

	<b>PFBC48CRL</b>	22	48	22	\$1,320	\$1,980
	<b>PFBC54CRL</b>	22	54	22	\$1,360	\$2,040
	<b>PFBC60CRL</b>	22	60	22	\$1,400	\$2,100
	<b>PFBC66CRL</b>	22	66	22	\$1,440	\$2,160
	<b>PFBC72CRL</b>	22	72	22	\$1,480	\$2,220
	<b>PFBC48CRR</b>	22	48	22	\$1,320	\$1,980
	<b>PFBC54CRR</b>	22	54	22	\$1,360	\$2,040
	<b>PFBC60CRR</b>	22	60	22	\$1,400	\$2,100
	<b>PFBC66CRR</b>	22	66	22	\$1,440	\$2,160
	<b>PFBC72CRR</b>	22	72	22	\$1,480	\$2,220



**Surround** | Note: Adding a surround will increase overall credenza width by 2.5" and depth by 0.75"

	<b>CRS60</b>	22	60	29	\$768	\$1,152
	<b>CRS66</b>	22	66	29	\$790	\$1,185
	<b>CRS72</b>	22	72	29	\$820	\$1,230
	<b>CRS6036</b>	22	60	36	\$780	\$1,170
	<b>CRS6636</b>	22	66	36	\$820	\$1,230
	<b>CRS7236</b>	22	72	36	\$856	\$1,284



Item	Model Number	D	W	H	TFL List	HPL List
------	--------------	---	---	---	----------	----------

**Storage Cabinets**

**Freestanding 2-Door (Includes 1 Adjustable Shelf)**



<b>SC30T</b>	22	30	29	\$906	\$1,359
<b>SC36T</b>	22	36	29	\$939	\$1,409
<b>SC42T</b>	22	42	29	\$949	\$1,424
<b>SC3036T</b>	22	30	36	\$1,226	\$1,839
<b>SC3636T</b>	22	36	36	\$1,251	\$1,877
<b>SC4236T</b>	22	42	36	\$1,275	\$1,913

**Open Top 2-Door (Includes 1 Adjustable Shelf)**



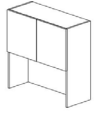
<b>SC30</b>	22	30	29	\$806	\$1,209
<b>SC36</b>	22	36	29	\$839	\$1,259
<b>SC42</b>	22	42	29	\$949	\$1,424
<b>SC3036</b>	22	30	36	\$1,126	\$1,689
<b>SC3636</b>	22	36	36	\$1,151	\$1,727
<b>SC4236</b>	22	42	36	\$1,175	\$1,763

# OVERHEAD STORAGE

Item	Model Number	D	W	H	TFL List	HPL List
------	--------------	---	---	---	----------	----------

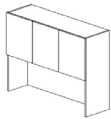
## Hutches

### 2-Door



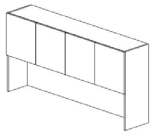
	<b>HU2D30</b>	15	30	36	\$539	\$809
	<b>HU2D36</b>	15	36	36	\$609	\$914

### 3-Door



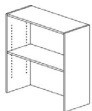
	<b>HU3D48</b>	15	48	36	\$712	\$1,068
--	---------------	----	----	----	-------	---------

### 4-Door



	<b>HU4D60</b>	15	60	36	\$1,245	\$1,868
	<b>HU4D66</b>	15	66	36	\$1,258	\$1,887
	<b>HU4D72</b>	15	72	36	\$1,455	\$2,183

### Open



	<b>HU24</b>	15	24	36	\$501	\$752
	<b>HU30</b>	15	30	36	\$531	\$797
	<b>HU36</b>	15	36	36	\$565	\$848
	<b>HU42</b>	15	42	36	\$598	\$897

### Quarter Round | Note: For use individually or in combination with hutches.

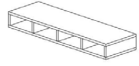


	<b>QR15</b>	15	15	36	\$486	\$729
--	-------------	----	----	----	-------	-------

Item	Model Number	D	W	H	TFL List	HPL List
------	--------------	---	---	---	----------	----------

**Organizers**

**Horizontal Organizers**



<b>HO36</b>	11.5	36	8	686	\$1,029
<b>HO48</b>	11.5	48	8	710	\$1,065
<b>HO60</b>	11.5	60	8	715	\$1,073
<b>HO66</b>	11.5	66	8	768	\$1,152
<b>HO72</b>	11.5	72	8	786	\$1,179

**Vertical Organizers**



<b>VO1218</b>	11.5	12	18	449	\$674
<b>VO1818</b>	11.5	18	18	483	\$725

**Mounted Fabric Tackboard** | Note: Refer to pages 18-19 for standard fabric options.

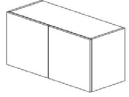


<b>TB36</b>	0.5	36	15	179	\$269
<b>TB48</b>	0.5	48	15	189	\$284
<b>TB60</b>	0.5	60	15	200	\$300
<b>TB66</b>	0.5	66	15	205	\$308
<b>TB72</b>	0.5	72	15	210	\$315
<b>TB84</b>	0.5	84	15	245	\$368
<b>TB96</b>	0.5	96	15	280	\$420

# OVERHEAD STORAGE

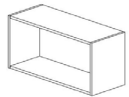
Item	Model Number	D	W	H	TFL List	HPL List
<b>Overhead</b>   Note: All overheads include French cleat. Wall fasteners to be supplied by installer.						

## Wall-Mounted with Doors





<b>WMOH24D</b>	15	24	17	\$657	\$986
<b>WMOH30D</b>	15	30	17	\$669	\$1,004
<b>WMOH36D</b>	15	36	17	\$682	\$1,023
<b>WMOH48D</b>	15	48	17	\$761	\$1,142
<b>WMOH60D</b>	15	60	17	\$794	\$1,191
<b>WMOH66D</b>	15	66	17	\$828	\$1,242
<b>WMOH72D</b>	15	72	17	\$861	\$1,292

## Wall-Mounted Open



<b>WMOH24</b>	15	24	17	\$413	\$620
<b>WMOH30</b>	15	30	17	\$430	\$645
<b>WMOH36</b>	15	36	17	\$447	\$671
<b>WMOH48</b>	15	48	17	\$489	\$734
<b>WMOH60</b>	15	60	17	\$531	\$797
<b>WMOH66</b>	15	66	17	\$573	\$860
<b>WMOH72</b>	15	72	17	\$720	\$1,080

Item	Model Number	D	W	H	TFL List	HPL List
<b>Floating Shelves</b>						
	<b>FLS1224</b>	12	24	0.75	\$280	\$420
	<b>FLS1230</b>	12	30	0.75	\$305	\$458
	<b>FLS1236</b>	12	36	0.75	\$326	\$489
	<b>FLS1242</b>	12	42	0.75	\$340	\$510
	<b>FLS1248</b>	12	48	0.75	\$358	\$537
	<b>FLS1260</b>	12	60	0.75	\$390	\$585
	<b>FLS1266</b>	12	66	0.75	\$415	\$623
	<b>FLS1272</b>	12	72	0.75	\$420	\$630
	<b>FLS1284</b>	12	84	0.75	\$435	\$653
	<b>FLS1296</b>	12	96	0.75	\$480	\$720

Item	Model Number	D	W	H	TFL List	HPL List
<b>Picture Ledge</b>						
	<b>FLS1224L</b>	12	24	0.75	\$380	\$570
	<b>FLS1230L</b>	12	30	0.75	\$405	\$608
	<b>FLS1236L</b>	12	36	0.75	\$426	\$639
	<b>FLS1242L</b>	12	42	0.75	\$440	\$660
	<b>FLS1248L</b>	12	48	0.75	\$458	\$687
	<b>FLS1260L</b>	12	60	0.75	\$490	\$735
	<b>FLS1266L</b>	12	66	0.75	\$515	\$773
	<b>FLS1272L</b>	12	72	0.75	\$520	\$780
	<b>FLS1284L</b>	12	84	0.75	\$535	\$803
	<b>FLS1296L</b>	12	96	0.75	\$580	\$870

# BOOKCASES

Item	Model Number	D	W	H	TFL List	HPL List
------	--------------	---	---	---	----------	----------

**Bookcase with Onset Top** | Note: FB has a 0.75" solid back panel, MB has a 0.25" masonite back panel.

## 2-Shelf (Includes 1 Adjustable)



<b>BC2S24MBT</b>	14	24	29	\$606	\$1,000
<b>BC2S24FBT</b>	14	24	29	\$686	\$1,132
<b>BC2S30MBT</b>	14	30	29	\$691	\$1,140
<b>BC2S30FBT</b>	14	30	29	\$771	\$1,272
<b>BC2S36MBT</b>	14	36	29	\$779	\$1,285
<b>BC2S36FBT</b>	14	36	29	\$859	\$1,417

## 3-Shelf (Includes 2 Adjustable)



<b>BC3S24MBT</b>	14	24	36	\$691	\$1,140
<b>BC3S24FBT</b>	14	24	36	\$771	\$1,272
<b>BC3S30MBT</b>	14	30	36	\$779	\$1,285
<b>BC3S30FBT</b>	14	30	36	\$859	\$1,417
<b>BC3S36MBT</b>	14	36	36	\$886	\$1,462
<b>BC3S36FBT</b>	14	36	36	\$966	\$1,594

## Bookcase with Inset Top

 | Note: FB has a 0.75" solid back panel, MB has a 0.25" masonite back panel.

### Low



<b>BC224L</b>	22	24	22	\$851	\$1,404
<b>BC230L</b>	22	30	22	\$920	\$1,518
<b>BC236L</b>	22	36	22	\$990	\$1,634

## 2-Shelf (Includes 1 Adjustable)



<b>BC2S24MB</b>	14	24	28	\$526	\$868
<b>BC2S24FB</b>	14	24	28	\$606	\$1,000
<b>BC2S30MB</b>	14	30	28	\$611	\$1,008
<b>BC2S30FB</b>	14	30	28	\$691	\$1,140
<b>BC2S36MB</b>	14	36	28	\$699	\$1,153
<b>BC2S36FB</b>	14	36	28	\$779	\$1,285

## 3-Shelf (Includes 2 Adjustable)

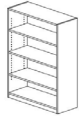


<b>BC3S24MB</b>	14	24	36	\$611	\$1,008
<b>BC3S24FB</b>	14	24	36	\$691	\$1,140
<b>BC3S30MB</b>	14	30	36	\$699	\$1,153
<b>BC3S30FB</b>	14	30	36	\$779	\$1,285
<b>BC3S36MB</b>	14	36	36	\$786	\$1,297
<b>BC3S36FB</b>	14	36	36	\$866	\$1,429



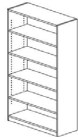
Item	Model Number	D	W	H	TFL List	HPL List
------	--------------	---	---	---	----------	----------

**4-Shelf (Includes 3 Adjustable)**



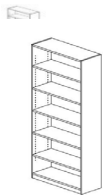
	<b>BC4S24MB</b>	14	24	48	\$786	\$1,297
	<b>BC4S24FB</b>	14	24	48	\$866	\$1,429
	<b>BC4S30MB</b>	14	30	48	\$873	\$1,440
	<b>BC4S30FB</b>	14	30	48	\$953	\$1,572
	<b>BC4S36MB</b>	14	36	48	\$959	\$1,582
	<b>BC4S36FB</b>	14	36	48	\$1,039	\$1,714

**5-Shelf (Includes 4 Adjustable)**



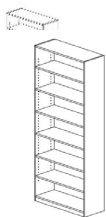
	<b>BC5S24MB</b>	14	24	60	\$873	\$1,440
	<b>BC5S24FB</b>	14	24	60	\$953	\$1,572
	<b>BC5S30MB</b>	14	30	60	\$959	\$1,582
	<b>BC5S30FB</b>	14	30	60	\$1,039	\$1,714
	<b>BC5S36MB</b>	14	36	60	\$1,046	\$1,726
	<b>BC5S36FB</b>	14	36	60	\$1,126	\$1,858

**6-Shelf (Includes 1 Fixed, 1 Adjustable)**



	<b>BC6S24MB</b>	14	24	72	\$1,046	\$1,726
	<b>BC6S24FB</b>	14	24	72	\$1,126	\$1,858
	<b>BC6S30MB</b>	14	30	72	\$1,133	\$1,869
	<b>BC6S30FB</b>	14	30	72	\$1,213	\$2,001
	<b>BC6S36MB</b>	14	36	72	\$1,220	\$2,013
	<b>BC6S36FB</b>	14	36	72	\$1,300	\$2,145

**7-Shelf (Includes 1 Fixed, 1 Adjustable)**



	<b>BC7S24MB</b>	14	24	84	\$1,133	\$1,869
	<b>BC7S24FB</b>	14	24	84	\$1,213	\$2,001
	<b>BC7S30MB</b>	14	30	84	\$1,220	\$2,013
	<b>BC7S30FB</b>	14	30	84	\$1,300	\$2,145
	<b>BC7S36MB</b>	14	36	84	\$1,306	\$2,155
	<b>BC7S36FB</b>	14	36	84	\$1,386	\$2,287

**Quarter Round**



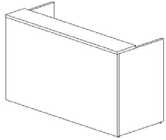
	<b>QR2424R</b>	24	24	29	\$459	\$757
	<b>QR2430L</b>	30	24	29	\$486	\$802
	<b>QR2430R</b>	24	30	29	\$486	\$802
	<b>QR2436R</b>	36	24	29	\$540	\$891
	<b>QR2436L</b>	24	36	29	\$540	\$891

# RECEPTION DESKS

**Note:** All desks delivered assembled. Knock-down available upon request. All worksurfaces are 29" high.

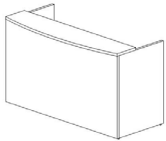
Item	Model Number	D	W	H	TFL List	HPL List
------	--------------	---	---	---	----------	----------

## Straight Front



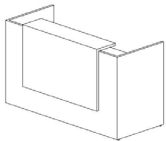
<b>REC48ST</b>		30	48	41	\$1,185	\$1,955
<b>REC60ST</b>		30	60	41	\$1,235	\$2,038
<b>REC72ST</b>		30	72	41	\$1,285	\$2,120

## Bow Front



<b>REC48BF</b>		30/42	48	41	\$1,205	\$1,988
<b>REC60BF</b>		30/42	60	41	\$1,235	\$2,038
<b>REC72BF</b>		30/42	72	41	\$1,285	\$2,120

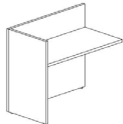
## Waterfall Front



<b>REC60WF</b>		30	60	41	\$2,440	\$4,026
<b>REC72WF</b>		30	72	41	\$2,650	\$4,374

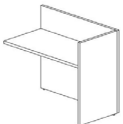
## Return Shells

### Left Return



<b>RECRS42L</b>		24	42	41	\$980	\$1,617
<b>RECRS48L</b>		24	48	41	\$980	\$1,617

### Right Return

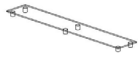


<b>RECRS42R</b>		24	42	41	\$980	\$1,617
<b>RECRS48R</b>		24	48	41	\$980	\$1,617

Item	Model Number	D	W	H	TFL List	HPL List
------	--------------	---	---	---	----------	----------

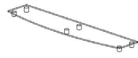
**Glass Top (Includes 1" metal standoffs)**

**Straight**



	<b>GS48ST</b>	12	48	0.5	\$495	-
	<b>GS60ST</b>	12	60	0.5	\$495	-
	<b>GS72ST</b>	12	72	0.5	\$495	-

**Bow**



	<b>GS48BF</b>	12	48	0.5	\$495	-
	<b>GS60BF</b>	12	60	0.5	\$495	-
	<b>GS72BF</b>	12	72	0.5	\$495	-

# TABLES

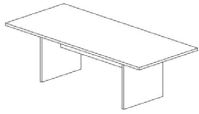
**Note:** All tops larger than 96" will be split into (2) pieces unless specified otherwise.

All tables 144" and larger will have (3) legs.

Item	Model Number	D	W	H	TFL List	HPL List
------	--------------	---	---	---	----------	----------

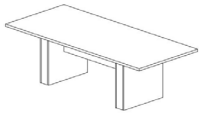
## Rectangular Conference Table

### Slab Base



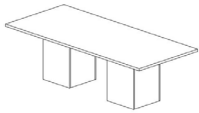
<b>CT60RECSB</b>	30	60	29	\$1,267	\$2,091
<b>CT72RECSB</b>	36	72	29	\$1,474	\$2,432
<b>CT96RECSB</b>	42	96	29	\$1,960	\$3,234
<b>CT120RECSB</b>	48	120	29	\$2,458	\$4,056
<b>CT144RECSB</b>	60	144	29	\$2,950	\$4,868

### Panel Base



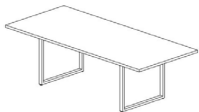
<b>CT60RECPB</b>	30	60	29	\$2,025	\$3,341
<b>CT72RECPB</b>	36	72	29	\$2,137	\$3,526
<b>CT96RECPB</b>	42	96	29	\$2,147	\$3,543
<b>CT120RECPB</b>	48	120	29	\$2,556	\$4,217
<b>CT144RECPB</b>	48	144	29	\$3,545	\$5,849

### Cube Base



<b>CT60RECCB</b>	30	60	29	\$2,567	\$4,236
<b>CT72RECCB</b>	36	72	29	\$2,670	\$4,406
<b>CT96RECCB</b>	42	96	29	\$2,997	\$4,945
<b>CT120RECB</b>	48	120	29	\$3,537	\$5,836
<b>CT144RECCB</b>	48	144	29	\$3,957	\$6,529

### Open Leg

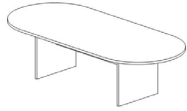


<b>OL3060</b>	30	60	29	\$1,307	\$2,157
<b>OL3672</b>	36	72	29	\$1,341	\$2,213
<b>OL3684</b>	36	84	29	\$1,390	\$2,294
<b>OL3696</b>	36	96	29	\$1,440	\$2,376

Item	Model Number	D	W	H	TFL List	HPL List
------	--------------	---	---	---	----------	----------

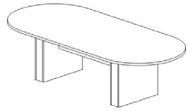
**Racetrack Conference Table**

**Slab Base**



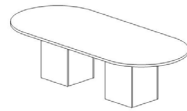
<b>CT60RACSB</b>	30	60	29	\$1,467	\$2,421
<b>CT72RACSB</b>	36	72	29	\$1,674	\$2,762
<b>CT96RACSB</b>	42	96	29	\$2,160	\$3,564
<b>CT120RACSB</b>	48	120	29	\$2,658	\$4,386
<b>CT144RACSB</b>	48	144	29	\$3,150	\$5,198

**Panel Base**



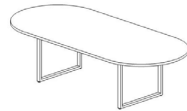
<b>CT60RACPB</b>	30	60	29	\$2,293	\$3,783
<b>CT72RACPB</b>	36	72	29	\$2,382	\$3,930
<b>CT96RACPB</b>	42	96	29	\$2,389	\$3,942
<b>CT120RACPB</b>	48	120	29	\$2,887	\$4,764
<b>CT144RACPB</b>	48	144	29	\$3,858	\$6,366

**Cube Base**



<b>CT60RACCB</b>	30	60	29	\$2,627	\$4,335
<b>CT72RACCB</b>	36	72	29	\$2,887	\$4,764
<b>CT96RACCB</b>	42	96	29	\$3,234	\$5,336
<b>CT120RACB</b>	48	120	29	\$3,700	\$6,105
<b>CT144RACCB</b>	48	144	29	\$4,126	\$6,808

**Open Leg**



<b>OL3060</b>	30	60	29	\$1,407	\$2,322
<b>OL3672</b>	36	72	29	\$1,441	\$2,378
<b>OL3684</b>	36	84	29	\$1,490	\$2,459
<b>OL3696</b>	36	96	29	\$1,540	\$2,541

# TABLES

Item	Model Number	D	W	H	TFL List	HPL List
------	--------------	---	---	---	----------	----------

## Square Meeting & Café Table

### Laminate X-Base



SQ36LX	36	36	30	\$1,125	\$1,856
SQ42LX	42	42	30	\$1,155	\$1,906
SQ48LX	48	48	30	\$1,215	\$2,005
SQ54LX	54	54	30	\$1,359	\$2,242
SQ60LX	60	60	30	\$1,449	\$2,391

### Metal Disc Base



SQ24DISC	24	24	30	\$940	\$1,551
SQ30DISC	30	30	30	\$1,157	\$1,909
SQ36DISC	36	36	30	\$1,233	\$2,034
SQ42DISC	42	42	30	\$1,239	\$2,044
SQ48DISC	48	48	30	\$1,290	\$2,129
SQ24DISC42	24	24	42	\$1,274	\$2,102
SQ30DISC42	30	30	42	\$1,491	\$2,460
SQ36DISC43	36	36	30	\$1,568	\$2,587
SQ42DISC42	42	42	42	\$1,573	\$2,595
SQ48DISC42	48	48	42	\$1,972	\$3,254

### Metal X-Base



SQ24MX	24	24	30	\$490	\$809
SQ30MX	30	30	30	\$707	\$1,167
SQ36MX	36	36	30	\$783	\$1,292
SQ42MX	42	42	30	\$789	\$1,302
SQ48MX	48	48	30	\$840	\$1,386
SQ24MX42	24	24	42	\$824	\$1,360
SQ30MX42	30	30	42	\$1,041	\$1,718
SQ36MX42	36	36	42	\$1,118	\$1,845
SQ42MX42	42	42	42	\$1,123	\$1,853

Item	Model Number	D	W	H	TFL List	HPL List
------	--------------	---	---	---	----------	----------

**Round Meeting & Café Table**

**Laminate X-Base**



<b>RT42LX</b>		42 Dia	30	\$1,258	\$2,076
<b>RT48LX</b>		48 Dia	30	\$1,320	\$2,178
<b>RT54LX</b>		54 Dia	30	\$1,660	\$2,739
<b>RT60LX</b>		60 Dia	30	\$1,868	\$3,082

**Metal Disc Base**



<b>RT24DISC</b>		24 Dia	30	\$906	\$1,495
<b>RT30DISC</b>		30 Dia	30	\$1,121	\$1,850
<b>RT36DISC</b>		36 Dia	30	\$1,452	\$2,396
<b>RT42DISC</b>		42 Dia	30	\$1,628	\$2,686
<b>RT48DISC</b>		48 Dia	30	\$1,657	\$2,734
<b>RT24DISC42</b>		24 Dia	42	\$1,530	\$2,525
<b>RT30DISC42</b>		30 Dia	42	\$1,729	\$2,853
<b>RT36DISC43</b>		36 Dia	42	\$1,787	\$2,949
<b>RT42DISC42</b>		42 Dia	42	\$1,962	\$3,237
<b>RT42DISC42</b>		42 Dia	42	\$2,068	\$3,412

**Metal X-Base**



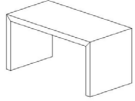
<b>RT24MX</b>		24 Dia	30	\$806	\$1,330
<b>RT30MX</b>		30 Dia	30	\$1,021	\$1,685
<b>RT36MX</b>		36 Dia	30	\$1,079	\$1,780
<b>RT42MX</b>		42 Dia	30	\$1,156	\$1,907
<b>RT48MX</b>		48 Dia	30	\$1,196	\$1,973
<b>RT24MX42</b>		24 Dia	42	\$1,140	\$1,881
<b>RT30MX42</b>		30 Dia	42	\$1,357	\$2,239
<b>RT36MX43</b>		36 Dia	42	\$1,414	\$2,333
<b>RT42MX42</b>		42 Dia	42	\$1,492	\$2,462

# TABLES

Item	Model Number	D	W	H	TFL List	HPL List
------	--------------	---	---	---	----------	----------

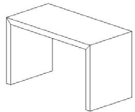
## Mitered Parsons Table

### Seated Height



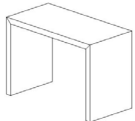
<b>PT306030</b>	30	60	30	-	\$4,214
<b>PT307230</b>	30	72	30	-	\$4,638
<b>PT366030</b>	36	60	30	-	\$5,015
<b>PT367230</b>	36	72	30	-	\$5,423
<b>PT428430</b>	42	84	30	-	\$6,620
<b>PT429630</b>	42	96	30	-	\$6,907

### Counter Height



<b>PT306036</b>	30	60	36	-	\$4,660
<b>PT307236</b>	30	72	36	-	\$4,967
<b>PT366036</b>	36	60	36	-	\$5,623
<b>PT367236</b>	36	72	36	-	\$5,833
<b>PT428436</b>	42	84	36	-	\$6,807
<b>PT429636</b>	42	96	36	-	\$7,220

### Bar Height



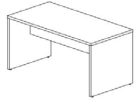
<b>PT306042</b>	30	60	42	-	\$4,885
<b>PT307242</b>	30	72	42	-	\$5,205
<b>PT366042</b>	36	60	42	-	\$5,767
<b>PT367242</b>	36	72	42	-	\$6,120
<b>PT428442</b>	42	84	42	-	\$6,654
<b>PT429642</b>	42	96	42	-	\$7,813



Item	Model Number	D	W	H	TFL List	HPL List
------	--------------	---	---	---	----------	----------

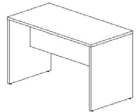
**Onset Parsons Table**

**Seated Height (Includes 12" Modesty Panel)**



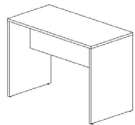
<b>PT306030</b>	30	60	30	\$1,050	\$1,733
<b>PT307230</b>	30	72	30	\$1,150	\$1,898
<b>PT366030</b>	36	60	30	\$1,350	\$2,228
<b>PT367230</b>	36	72	30	\$1,450	\$2,393
<b>PT428430</b>	42	84	30	\$1,850	\$3,053
<b>PT429630</b>	42	96	30	\$1,950	\$3,218

**Counter Height (Includes 18" Modesty Panel)**



<b>PT306036</b>	30	60	36	\$1,950	\$3,218
<b>PT307236</b>	30	72	36	\$2,100	\$3,465
<b>PT366036</b>	36	60	36	\$2,500	\$4,125
<b>PT367236</b>	36	72	36	\$2,700	\$4,455
<b>PT428436</b>	42	84	36	\$3,200	\$5,280
<b>PT429636</b>	42	96	36	\$3,500	\$5,775

**Bar Height (Includes 18" Modesty Panel)**



<b>PT306042</b>	30	60	42	\$2,050	\$3,383
<b>PT307242</b>	30	72	42	\$2,200	\$3,630
<b>PT366042</b>	36	60	42	\$2,600	\$4,290
<b>PT367242</b>	36	72	42	\$2,800	\$4,620
<b>PT428442</b>	42	84	42	\$3,300	\$5,445
<b>PT429642</b>	42	96	42	\$3,600	\$5,940

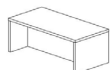
**Ancillary Tables**

**Panel Leg Side Table**



<b>ET24PL</b>	24	24	20	\$540	\$891
<b>ET36PL</b>	24	36	20	\$560	\$924


**Panel Leg Coffee Table**




<b>COF36PL</b>	24	36	18	\$520	\$858
<b>COF48PL</b>	24	48	18	\$660	\$1,089

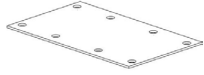
# WORKSURFACES

**Note:** TFL thickness is 1.125" / HPL thickness is 1.25"

Item	Model Number	D	W	H	TFL List	HPL List
<b>24" Deep</b>						
	<b>WS2424</b>	24	24	Varies	\$80	\$120
	<b>WS2430</b>	24	30	Varies	\$100	\$150
	<b>WS2436</b>	24	36	Varies	\$120	\$180
	<b>WS2442</b>	24	42	Varies	\$140	\$210
	<b>WS2448</b>	24	48	Varies	\$160	\$240
	<b>WS2454</b>	24	54	Varies	\$180	\$270
	<b>WS2460</b>	24	60	Varies	\$200	\$300
	<b>WS2466</b>	24	66	Varies	\$220	\$330
	<b>WS2472</b>	24	72	Varies	\$240	\$360
	<b>WS2478</b>	24	78	Varies	\$260	\$390
	<b>WS2484</b>	24	84	Varies	\$280	\$420
	<b>WS2490</b>	24	90	Varies	\$300	\$450
<b>WS2496</b>	24	96	Varies	\$320	\$480	

<b>30" Deep</b>						
	<b>WS3030</b>	30	30	Varies	\$125	\$188
	<b>WS3036</b>	30	36	Varies	\$150	\$225
	<b>WS3042</b>	30	42	Varies	\$175	\$263
	<b>WS3048</b>	30	48	Varies	\$200	\$300
	<b>WS3054</b>	30	54	Varies	\$225	\$338
	<b>WS3060</b>	30	60	Varies	\$250	\$375
	<b>WS3066</b>	30	66	Varies	\$275	\$413
	<b>WS3072</b>	30	72	Varies	\$300	\$450
	<b>WS3078</b>	30	78	Varies	\$325	\$488
	<b>WS3084</b>	30	84	Varies	\$350	\$525
	<b>WS3090</b>	30	90	Varies	\$375	\$563
	<b>WS3096</b>	30	96	Varies	\$400	\$600

Item	Model Number	D	W	H	TFL List	HPL List
<b>Flat Plate</b>						
	<b>FP35</b>	3	5	0.125	\$20	-

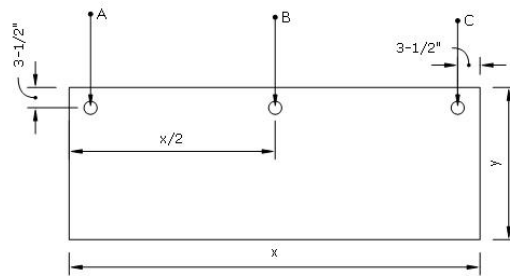


**Grommet\***

<b>GRBLK</b>	3" Diameter	\$38	-
<b>GRWHT</b>	3" Diameter	\$38	-
<b>GRGRY</b>	3" Diameter	\$38	-



\*Grommet locations will be placed per below unless noted otherwise.




# SUPPORTS

**Note:** All metal products have minimum 2-week lead time; TBC at time of order.

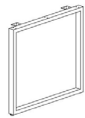
When ordering metal products, add finish to end of model number: Black (BLK) / White (WHT) / Silver (SIL)

TFL thickness is 1.125" / HPL thickness is 1.25"

Item	Model Number	D	W	H	TFL List	HPL List
<b>Panel Leg (Levelers Included)</b>						
	<b>EP1228</b>	Varies	12	28	\$125	\$206
	<b>EP2428</b>	Varies	24	28	\$175	\$289
	<b>EP3028</b>	Varies	30	28	\$188	\$309
	<b>EP3628</b>	Varies	36	28	\$213	\$351
	<b>EP4828</b>	Varies	48	28	\$250	\$413
	<b>EP6028</b>	Varies	60	28	\$313	\$516

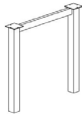
## Fixed Metal Legs

### O-Leg



<b>OL24_ _ _</b>	To pair with 24" Deep Tops	\$335	-
<b>OL30_ _ _</b>	To pair with 30" Deep Tops	\$347	-

### N-Leg



<b>NL24_ _ _</b>	For 24" Deep Tops	\$325	-
<b>NL30_ _ _</b>	For 30" Deep Tops	\$337	-
<b>NL36_ _ _</b>	For 36" Deep Tops	\$362	-
<b>NL42_ _ _</b>	For 42" Deep Tops	\$375	-
<b>NL48_ _ _</b>	For 48" Deep Tops	\$400	-
<b>NL54_ _ _</b>	For 54" Deep Tops	\$413	-
<b>NL60_ _ _</b>	For 60" Deep Tops	\$450	-

### T-Leg



<b>TL24_ _ _</b>	For 24" Deep Tops	\$313	-
<b>TL30_ _ _</b>	For 30" Deep Tops	\$350	-

### Post Leg

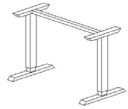


<b>PL28_ _ _</b>	Seated Height	\$118	-
<b>PL41_ _ _</b>	Standing Height	\$178	-

Item	Model Number	D	W	H	TFL List	HPL List
------	--------------	---	---	---	----------	----------

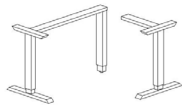
**Height Adjustable** (Available Quickship)

**Straight Base**



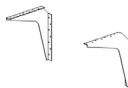
<b>HAB4696S2</b> __	24-30	46-96	2 Stage	\$1,185	-
<b>HAB4696S3</b> __	24-30	46-96	3 Stage	\$1,399	-

**L-Shape Base**



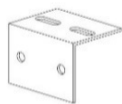
<b>HALB4884S3</b> __	48-84	48-84	3 Stage	\$1,999	-
----------------------	-------	-------	---------	---------	---

**Hanging Wall Bracket** (Per Pair / Available Quickship)



<b>WB1818</b> __	For 24" Deep	\$100	-
<b>WB2424</b> __	For 30" Deep	\$130	-
<b>WB2429</b> __	For 36" Deep	\$160	-

**Corner Brace**



<b>CB2</b>	\$20	-
------------	------	---

# LOCKERS & CUBBIES

**Note:** Standard product includes the Square Pull, (1) Double coat hook mounted on side, and 2" toe kick. For additional pull options refer to Page 16. Additional height & style toe kicks available upon request. Please specify locker grouping at time of ordering.

Add-on options: Shelves \$98 List / Double Coat Hook \$31 / Coat Road \$180 (List price per unit)

Standard product includes keyed lock. Additional options: Hasp \$145 / Reprogrammable \$614 (List price per unit)

Item	Model Number	D	W	H	TFL List	HPL List
------	--------------	---	---	---	----------	----------

## Locker with Flat Top

### 1-Door



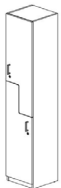
LOC1D12	15	12	72	\$976	\$1,464
LOC1D18	15	18	72	\$1,050	\$1,575
LOC1D24	15	24	72	\$1,227	\$1,841

### 2-Door



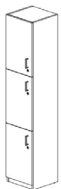
LOC2D12	15	12	72	\$1,111	\$1,667
LOC2D18	15	18	72	\$1,302	\$1,953
LOC2D24	15	24	72	\$1,402	\$2,103

### 2-Door Z-Locker



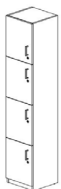
LOC2DZ12	15	12	72	\$1,190	\$1,785
LOC2DZ18	15	18	72	\$1,282	\$1,923
LOC2DZ24	15	24	72	\$1,484	\$2,226

### 3-Door



LOC3D12	15	12	72	\$1,180	\$1,770
LOC3D18	15	18	72	\$1,279	\$1,919
LOC3D24	15	24	72	\$1,349	\$2,024

### 4-Door

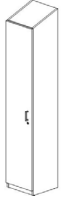


LOC4D12	15	12	72	\$1,180	\$1,770
LOC4D18	15	18	72	\$1,362	\$2,043
LOC4D24	15	24	72	\$1,545	\$2,318

Item	Model Number	D	W	H	TFL List	HPL List
------	--------------	---	---	---	----------	----------

**Locker with Sloped Top**

**1-Door**



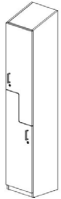
<b>LOC1D12SLT</b>	15	12	72	\$961	\$1,442
<b>LOC1D18SLT</b>	15	18	72	\$1,038	\$1,557
<b>LOC1D24SLT</b>	15	24	72	\$1,205	\$1,808

**2-Door**



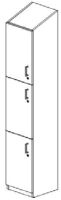
<b>LOC2D12SLT</b>	15	12	72	\$1,039	\$1,559
<b>LOC2D18SLT</b>	15	18	72	\$1,121	\$1,682
<b>LOC2D24SLT</b>	15	24	72	\$1,297	\$1,946

**2-Door Z-Locker**



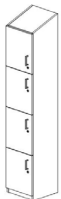
<b>LOC2DZ12SLT</b>	15	12	72	\$1,217	\$1,826
<b>LOC2DZ18SLT</b>	15	18	72	\$1,326	\$1,989
<b>LOC2DZ24SLT</b>	15	24	72	\$1,530	\$2,295

**3-Door**



<b>LOC3D12SLT</b>	15	12	72	\$1,276	\$1,914
<b>LOC3D18SLT</b>	15	18	72	\$1,356	\$2,034
<b>LOC3D24SLT</b>	15	24	72	\$1,440	\$2,160

**4-Door**



<b>LOC4D12SLT</b>	15	12	72	\$1,280	\$1,920
<b>LOC4D18SLT</b>	15	18	72	\$1,462	\$2,193
<b>LOC4D24SLT</b>	15	24	72	\$1,645	\$2,468

# LOCKERS & CUBBIES

Item	Model Number	D	W	H	TFL List	HPL List
------	--------------	---	---	---	----------	----------

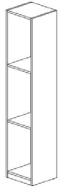
## Cubby

### 1-Shelf



<b>CU1012</b>	15	12	72	\$687	\$1,031
<b>CU1018</b>	15	18	72	\$759	\$1,139
<b>CU1024</b>	15	24	72	\$921	\$1,382

### 2-Shelf



<b>CU2012</b>	15	12	72	\$762	\$1,143
<b>CU2018</b>	15	18	72	\$834	\$1,251
<b>CU2024</b>	15	24	72	\$996	\$1,494

### 3-Shelf



<b>CU3012</b>	15	12	72	\$837	\$1,256
<b>CU3018</b>	15	15	72	\$921	\$1,382
<b>CU3024</b>	15	24	72	\$1,071	\$1,607

### 4-Shelf



<b>CU4012</b>	15	12	72	\$912	\$1,368
<b>CU4018</b>	15	18	72	\$996	\$1,494
<b>CU4024</b>	15	24	72	\$1,146	\$1,719



Item	Model Number	D	W	H	TFL List	HPL List
------	--------------	---	---	---	----------	----------

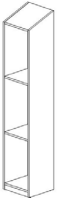
**Cubby with Sloped Top**

**One Shelf**



CU1012SLT	15	12	72	\$688	\$1,032
CU1018SLT	15	18	72	\$777	\$1,166
CU1024SLT	15	24	72	\$864	\$1,296

**Two Shelf**



CU2012SLT	15	12	72	\$743	\$1,115
CU2018SLT	15	18	72	\$852	\$1,278
CU2018SLT	15	24	72	\$939	\$1,409

**Three Shelf**



CU3012SLT	15	12	72	\$818	\$1,227
CU3018SLT	15	15	72	\$927	\$1,391
CU3024SLT	15	24	72	\$1,014	\$1,521

**Four Shelf**



CU4012SLT	15	12	72	\$893	\$1,340
CU4018SLT	15	18	72	\$1,002	\$1,503
CU4024SLT	15	24	72	\$1,077	\$1,616

# DIVIDER SCREENS

**Note:** When ordering, add material to end of Model Number.

Thickness varies by material: Laminate (LAM) 0.75" / PET (PET) 0.5" / Polycarbonate (POLY) 0.25" / Whiteboard (WB) 0.75"

Refer to pages 14-19 for standard finish options.

Clamps sold separately.

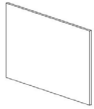
Item	Model Number	W	H	LAM	PET	POL	WHB
<b>12" High</b>							
	DIV2412_ _ _	24	12	\$65	\$70	\$75	\$60
	DIV3012_ _ _	30	12	\$80	\$88	\$113	\$90
	DIV3612_ _ _	36	12	\$80	\$105	\$113	\$90
	DIV4212_ _ _	42	12	\$110	\$123	\$150	\$120
	DIV4812_ _ _	48	12	\$110	\$140	\$150	\$120
	DIV5412_ _ _	54	12	\$130	\$158	\$188	\$150
	DIV6012_ _ _	60	12	\$130	\$175	\$188	\$150
	DIV6612_ _ _	66	12	\$145	\$193	\$225	\$180
	DIV7212_ _ _	72	12	\$145	\$210	\$225	\$180
	DIV7812_ _ _	78	12	\$193	\$228	\$263	\$210
	DIV8412_ _ _	84	12	\$193	\$245	\$263	\$210
	DIV9012_ _ _	90	12	\$245	\$263	\$300	\$240
	DIV9612_ _ _	96	12	\$245	\$280	\$300	\$240



<b>18" High</b>							
	DIV2418_ _ _	24	18	\$105	\$105	\$150	\$120
	DIV3018_ _ _	30	18	\$140	\$131	\$225	\$180
	DIV3618_ _ _	36	18	\$140	\$158	\$225	\$180
	DIV4218_ _ _	42	18	\$163	\$184	\$300	\$240
	DIV4818_ _ _	48	18	\$163	\$210	\$300	\$240
	DIV5418_ _ _	54	18	\$220	\$238	\$375	\$300
	DIV6018_ _ _	60	18	\$220	\$263	\$375	\$300
	DIV6618_ _ _	66	18	\$240	\$290	\$450	\$360
	DIV7218_ _ _	72	18	\$240	\$315	\$450	\$360
	DIV7818_ _ _	78	18	\$280	\$343	\$525	\$420
	DIV8418_ _ _	84	18	\$280	\$368	\$525	\$420
	DIV9018_ _ _	90	18	\$320	\$395	\$600	\$480
	DIV9618_ _ _	96	18	\$320	\$420	\$600	\$480



Item	Model Number	W	H	LAM	PET	POL	WHB
<b>24" High</b>							
	<b>DIV2424_ _ _</b>	24	24	\$105	\$140	\$150	\$120
	<b>DIV3024_ _ _</b>	30	24	\$140	\$175	\$225	\$180
	<b>DIV3624_ _ _</b>	36	24	\$140	\$210	\$225	\$180
	<b>DIV4224_ _ _</b>	42	24	\$163	\$245	\$300	\$240
	<b>DIV4824_ _ _</b>	48	24	\$163	\$280	\$300	\$240
	<b>DIV5424_ _ _</b>	54	24	\$220	\$315	\$375	\$300
	<b>DIV6024_ _ _</b>	60	24	\$220	\$350	\$375	\$300
	<b>DIV6624_ _ _</b>	66	24	\$240	\$385	\$450	\$360
	<b>DIV7224_ _ _</b>	72	24	\$240	\$420	\$450	\$360
	<b>DIV7824_ _ _</b>	78	24	\$280	\$455	\$525	\$420
	<b>DIV8424_ _ _</b>	84	24	\$280	\$490	\$525	\$420
	<b>DIV9024_ _ _</b>	90	24	\$320	\$525	\$600	\$480
	<b>DIV9624_ _ _</b>	96	24	\$320	\$560	\$600	\$480



# DIVIDER SCREENS

Item	Model Number	Finish	List
------	--------------	--------	------

Clamps

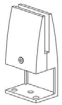
**Clamp Type #1**

<b>CLS</b>	Black or Silver	\$18 Per Clamp
------------	-----------------	----------------



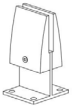
**Clamp Type #2**

<b>CLUM</b>	Black or Silver	\$38 Per Clamp
-------------	-----------------	----------------



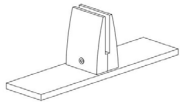
**Clamp Type #3**

<b>CLUMD</b>	Black or Silver	\$50 Per Clamp
--------------	-----------------	----------------



**Clamp Type #4**

<b>CLFS</b>	Black or Silver	\$63 Per Clamp
-------------	-----------------	----------------



**Clamp Type #5**

<b>CLHS</b>	Black or Silver	\$63 Per Clamp
-------------	-----------------	----------------



**Clamp Type #6**

<b>CLVS</b>	Black or Silver	\$63 Per Clamp
-------------	-----------------	----------------



Item	Model Number	Finish	List
------	--------------	--------	------

Connectors | Note: Accomodates 0.25" Panel Thickness. All connectors are 24"; to be cut on-site as needed.

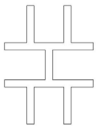
**Straight**

	<b>3WC</b>	Clear	\$50 Per Connector
--	------------	-------	--------------------



**2-Way**

	<b>2WC</b>	Clear	\$50 Per Connector
--	------------	-------	--------------------



**3-Way**

	<b>3WC</b>	Clear	\$50 Per Connector
--	------------	-------	--------------------



**4-Way**

	<b>4WC</b>	Clear	\$50 Per Connector
--	------------	-------	--------------------





# GALLERY & MODESTY PANELS


**Note:** Material Thickness: 1-1/8" TFL & 1-1/4" HPL

Grain runs vertical on gallery/wing panels and horizontally on modesty panels.

Modesty panels ranging from 36"-48" require (2) brackets / 60"-72" require (3) brackets. Must be ordered separately. Levelers included.

Item	Model Number	D	W	H	TFL LIST	HPL LIST
<b>Gallery / Wing Panel</b>						
	<b>GP2442</b>	Varies	24	42	\$283	\$467
	<b>GP3042</b>	Varies	30	42	\$342	\$564
	<b>GP3642</b>	Varies	36	42	\$428	\$706
	<b>GP4242</b>	Varies	42	42	\$440	\$726
	<b>GP4842</b>	Varies	48	42	\$460	\$759
	<b>GP5442</b>	Varies	54	42	\$677	\$1,117
	<b>GP6042</b>	Varies	60	42	\$815	\$1,345
	<b>GP2448</b>	Varies	24	48	\$298	\$492
	<b>GP3048</b>	Varies	30	48	\$362	\$597
	<b>GP3648</b>	Varies	36	48	\$449	\$741
	<b>GP4248</b>	Varies	42	48	\$460	\$759
	<b>GP4848</b>	Varies	48	48	\$485	\$800
	<b>GP5448</b>	Varies	54	48	\$747	\$1,233
	<b>GP6048</b>	Varies	60	48	\$858	\$1,416
	<b>GP2454</b>	Varies	24	54	\$348	\$574
	<b>GP3054</b>	Varies	30	54	\$422	\$696
	<b>GP3654</b>	Varies	36	54	\$481	\$794
	<b>GP4254</b>	Varies	42	54	\$490	\$809
	<b>GP4854</b>	Varies	48	54	\$565	\$932
	<b>GP5454</b>	Varies	54	54	\$947	\$1,563
	<b>GP6054</b>	Varies	60	54	\$1,001	\$1,652
	<b>GP2460</b>	Varies	24	60	\$383	\$632
	<b>GP3060</b>	Varies	30	60	\$464	\$766
	<b>GP3660</b>	Varies	36	60	\$530	\$875
	<b>GP4260</b>	Varies	42	60	\$580	\$957
	<b>GP4860</b>	Varies	48	60	\$622	\$1,026
	<b>GP5460</b>	Varies	54	60	\$1,041	\$1,718
	<b>GP6060</b>	Varies	60	60	\$1,101	\$1,817

Item	Model Number	D	W	H	TFL LIST	HPL LIST
<b>Modesty Panel</b>						
	<b>MP368</b>	3/4"	36	8	\$240	\$396
	<b>MP428</b>	3/4"	42	8	\$250	\$413
	<b>MP488</b>	3/4"	48	8	\$260	\$429
	<b>MP608</b>	3/4"	60	8	\$300	\$495
	<b>MP668</b>	3/4"	66	8	\$315	\$520
	<b>MP728</b>	3/4"	72	8	\$320	\$528
	<b>MP3615</b>	3/4"	36	15	\$340	\$561
	<b>MP4215</b>	3/4"	42	15	\$350	\$578
	<b>MP4815</b>	3/4"	48	15	\$360	\$594
	<b>MP6015</b>	3/4"	60	15	\$400	\$660
	<b>MP6615</b>	3/4"	66	15	\$415	\$685
	<b>MP7215</b>	3/4"	72	15	\$420	\$693

<b>Modesty Panel Bracket</b>						
	<b>MPB</b>	3	1	8	\$30	-

# MODULAR MILLWORK

**Note:** Standard product includes the Square Pull. For additional pull options refer to Page 16.

All upper cabinets include (2) Adjustable Shelves / All lower cabinets include (1) Adjustable Shelf

All standard cabinetry is non-locking.

Additional locking options: Keyed \$98 / Hasp \$145 / Reprogrammable \$614 (List price per unit)


All cabinetry is designed to be fastened to the wall. Upper units include a french cleat.

Wall fasteners to be supplied by installer based on wall & stud construction.


Toe kick & fillers must be ordered seperately.

Cove molding or toe kick to be adhered by a supplier in order to complete installation.

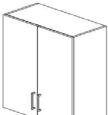
Add-on options: Additional shelves \$98 / Glove cut-out on door: \$240 (List price per unit)

Item	Model Number	D	W	H	TFL List	HPL List
<b>Upper Cabinet</b>						
<b>Open</b>						
	<b>MMUCO12</b>	15	12	30	\$214	\$321
	<b>MMUCO18</b>	15	18	30	\$289	\$434
	<b>MMUCO24</b>	15	24	30	\$355	\$533
	<b>MMUCO30</b>	15	30	30	\$431	\$647
	<b>MMUCO36</b>	15	36	30	\$529	\$794
	<b>MMUCO1236</b>	15	12	36	\$284	\$426
	<b>MMUCO1836</b>	15	18	36	\$372	\$558
	<b>MMUCO2436</b>	15	24	36	\$458	\$687
	<b>MMUCO3036</b>	15	30	36	\$554	\$831
	<b>MMUCO3636</b>	15	36	36	\$672	\$1,008

## Single Door

	<b>MMUC1D1230</b>	15	12	30	\$530	\$795
	<b>MMUC1D1830</b>	15	18	30	\$655	\$983
	<b>MMUC1D2430</b>	15	24	30	\$759	\$1,139
	<b>MMUC1D1836</b>	15	12	36	\$594	\$891
	<b>MMUC1D1836</b>	15	18	36	\$737	\$1,106
	<b>MMUC1D2436</b>	15	24	36	\$859	\$1,289

## Double Door

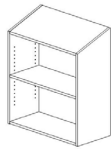
	<b>MMUC2D3030</b>	15	30	30	\$895	\$1,343
	<b>MMUC2D3630</b>	15	36	30	\$1,032	\$1,548
	<b>MMUC2D3036</b>	15	30	36	\$981	\$1,472
	<b>MMUC2D3636</b>	15	36	36	\$1,138	\$1,707



Item	Model Number	D	W	H	TFL List	HPL List
------	--------------	---	---	---	----------	----------

**Sloped Top**

**Open Sloped Top**



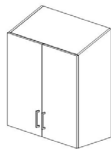
MMUCO12SLT	15	12	30	\$281	\$422
MMUCO18SLT	15	18	30	\$367	\$551
MMUCO24SLT	15	24	30	\$447	\$671
MMUCO30SLT	15	30	30	\$543	\$815
MMUCO36SLT	15	36	30	\$652	\$978
MMUCO1236SLT	15	12	36	\$329	\$494
MMUCO1836SLT	15	18	36	\$428	\$642
MMUCO2436SLT	15	24	36	\$525	\$788
MMUCO3036SLT	15	30	36	\$635	\$953
MMUCO3636SLT	15	36	36	\$763	\$1,145

**Single Door Sloped Top**



MMUC1D1230SLT	15	12	30	\$582	\$873
MMUC1D1830SLT	15	18	30	\$719	\$1,079
MMUC1D2430SLT	15	24	30	\$834	\$1,251
MMUC1D1836SLT	15	12	36	\$684	\$1,026
MMUC1D1836SLT	15	18	36	\$824	\$1,236
MMUC1D2436SLT	15	24	36	\$960	\$1,440

**Double Door Slope Top**



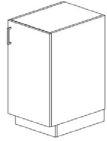
MMUC2D3030SLT	15	30	30	\$981	\$1,472
MMUC2D3630SLT	15	36	30	\$1,131	\$1,697
MMUC2D3036SLT	15	30	36	\$1,098	\$1,647
MMUC2D3636SLT	15	36	36	\$1,275	\$1,913

# MODULAR MILLWORK

Item	Model Number	D	W	H	TFL List	HPL List
------	--------------	---	---	---	----------	----------

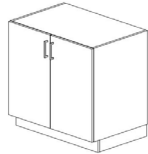
## Base Cabinet

### Single Door



<b>MMBC1D18ADA</b>	24	18	33	\$825	\$1,238
<b>MMBC1D24ADA</b>	24	24	33	\$895	\$1,343
<b>MMBC1D18</b>	24	18	36	\$825	\$1,238
<b>MMBC1D24</b>	24	24	36	\$895	\$1,343

### Double Door



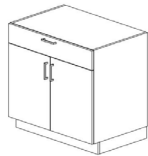
<b>MMBC2D30ADA</b>	24	30	33	\$1,229	\$1,844
<b>MMBC2D36ADA</b>	24	36	33	\$1,277	\$1,916
<b>MMBC2D30</b>	24	30	36	\$1,229	\$1,844
<b>MMBC2D36</b>	24	36	36	\$1,277	\$1,916

### Single Door with 1-Drawer



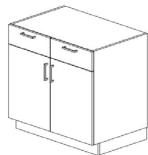
<b>MMBC1D1DR18ADA</b>	24	18	33	\$1,191	\$1,787
<b>MMBC1D1DR24ADA</b>	24	24	33	\$1,300	\$1,950
<b>MMBC1D1DR18</b>	24	18	36	\$1,191	\$1,787
<b>MMBC1D1DR24</b>	24	24	36	\$1,300	\$1,950

### Double Door with 1-Drawer



<b>MMBC2D1DR30ADA</b>	24	30	33	\$1,478	\$2,217
<b>MMBC2D1DR36ADA</b>	24	36	33	\$1,541	\$2,312
<b>MMBC2D1DR30</b>	24	30	36	\$1,478	\$2,217
<b>MMBC2D1DR36</b>	24	36	36	\$1,541	\$2,312

### Double Door with 2-Drawer



<b>MMBC2D2DR30ADA</b>	24	30	33	\$1,585	\$2,378
<b>MMBC2D2DR36ADA</b>	24	36	33	\$1,649	\$2,474
<b>MMBC2D2DR30</b>	24	30	36	\$1,585	\$2,378
<b>MMBC2D2DR36</b>	24	36	36	\$1,649	\$2,474

Item	Model Number	D	W	H	TFL List	HPL List
------	--------------	---	---	---	----------	----------

**3-Drawer**



<b>MMBC3DR12ADA</b>	24	12	33	\$1,531	\$2,297
<b>MMBC3DR18ADA</b>	24	18	33	\$1,638	\$2,457
<b>MMBC3DR24ADA</b>	24	24	33	\$1,767	\$2,651
<b>MMBC3DR30ADA</b>	24	30	33	\$1,822	\$2,733
<b>MMBC3DR36ADA</b>	24	36	33	\$1,886	\$2,829
<b>MMBC3DR12</b>	24	12	36	\$1,531	\$2,297
<b>MMBC3DR18</b>	24	18	36	\$1,638	\$2,457
<b>MMBC3DR24</b>	24	24	36	\$1,767	\$2,651
<b>MMBC3DR30</b>	24	30	36	\$1,822	\$2,733
<b>MMBC3DR36</b>	24	36	36	\$1,886	\$2,829

**4-Drawer**



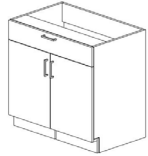
<b>MMBC4DR12ADA</b>	24	12	33	\$1,647	\$2,471
<b>MMBC4DR18ADA</b>	24	18	33	\$1,774	\$2,661
<b>MMBC4DR24ADA</b>	24	24	33	\$1,948	\$2,922
<b>MMBC4DR30ADA</b>	24	30	33	\$2,007	\$3,011
<b>MMBC4DR36ADA</b>	24	36	33	\$2,092	\$3,138
<b>MMBC4DR12</b>	24	12	36	\$1,647	\$2,471
<b>MMBC4DR18</b>	24	18	36	\$1,774	\$2,661
<b>MMBC4DR24</b>	24	24	36	\$1,948	\$2,922
<b>MMBC4DR30</b>	24	30	36	\$2,007	\$3,011
<b>MMBC4DR36</b>	24	36	36	\$2,092	\$3,138

# MODULAR MILLWORK

Item	Model Number	D	W	H	TFL List	HPL List
------	--------------	---	---	---	----------	----------

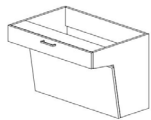
### Sink Base Cabinet

#### ADA w/ Integrated Toe Kick



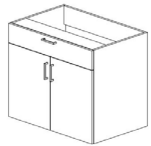
<b>MMSC1D24ADA</b>	24	30	33	\$1,221	\$1,832
<b>MMSC2D30ADA</b>	24	30	33	\$1,342	\$2,013
<b>MMSC2D36ADA</b>	24	36	33	\$1,391	\$2,087

#### ADA w/ Angled Panel



<b>ADAS30</b>	24	30	24	\$1,078	\$1,617
<b>ADAS30</b>	24	36	24	\$1,103	\$1,655

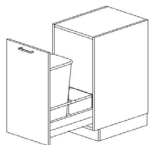
#### Standard



<b>MMSC1D24</b>	24	30	36	\$1,121	\$1,682
<b>MMSC2D330</b>	24	30	36	\$1,242	\$1,863
<b>MMSC2D36</b>	24	36	36	\$1,291	\$1,937

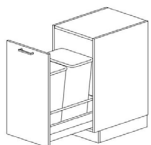
### Waste Pullout Base Cabinet

#### Pull Out Drawer Single Can



<b>MMBCWP18ADA</b>	24	18	33	\$1,483	\$2,225
<b>MMBCWP18</b>	24	18	36	\$1,483	\$2,225

#### Pull Out Drawer Double Can



<b>MMBC2WP18ADA</b>	24	18	33	\$1,683	\$2,525
<b>MMBC2WP18</b>	24	18	36	\$1,683	\$2,525

Item	Model Number	D	W	H	TFL List	HPL List
------	--------------	---	---	---	----------	----------

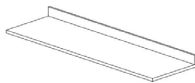
**Countertop with 4" Backsplash**

Laminate



<b>CTBSLA18</b>	24	18	1.25	\$228	\$376
<b>CTBSLA24</b>	24	24	1.25	\$253	\$417
<b>CTBSLA30</b>	24	30	1.25	\$288	\$475
<b>CTBSLA36</b>	24	36	1.25	\$340	\$561
<b>CTBSLA42</b>	24	42	1.25	\$355	\$586
<b>CTBSLA48</b>	24	48	1.25	\$390	\$644
<b>CTBSLA54</b>	24	54	1.25	\$413	\$681
<b>CTBSLA60</b>	24	60	1.25	\$428	\$706
<b>CTBSLA66</b>	24	66	1.25	\$463	\$764
<b>CTBSLA72</b>	24	66	1.25	\$468	\$772
<b>CTBSLA78</b>	24	78	1.25	\$480	\$792
<b>CTBSLA84</b>	24	84	1.25	\$505	\$833
<b>CTBSLA90</b>	24	90	1.25	\$538	\$888
<b>CTBSLA96</b>	24	96	1.25	\$550	\$908

Solid Surface



<b>CTBSSS18</b>	24	18	1	\$563	-
<b>CTBSSS24</b>	24	24	1	\$750	-
<b>CTBSSS30</b>	24	30	1	\$938	-
<b>CTBSSS36</b>	24	36	1	\$1125	-
<b>CTBSSS42</b>	24	42	1	\$1313	-
<b>CTBSSS48</b>	24	48	1	\$1500	-
<b>CTBSSS54</b>	24	54	1	\$1688	-
<b>CTBSSS60</b>	24	60	1	\$1875	-
<b>CTBSSS66</b>	24	66	1	\$2063	-
<b>CTBSSS72</b>	24	66	1	\$2,250	-
<b>CTBSSS78</b>	24	78	1	\$2,438	-
<b>CTBSSS84</b>	24	84	1	\$2,625	-
<b>CTBSSS90</b>	24	90	1	\$2813	-
<b>CTBSSS96</b>	24	96	1	\$3000	-

# MODULAR MILLWORK

Item	Model Number	D	W	H	TFL List	HPL List
------	--------------	---	---	---	----------	----------

## 6" End Panel



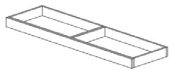
	<b>MMEP33</b>	0.75	6	33	\$177	\$266
	<b>MMEP36</b>	0.75	6	36	\$195	\$293

## 6" Filler Panel | Note: Larger filler panels available upon request.



	<b>MMBF33</b>	0.75	6	33	\$129	\$194
	<b>MMBF36</b>	0.75	6	36	\$129	\$194
	<b>MMBF96ADA</b>	0.75	6	24	\$158	\$237
	<b>MMUFS35</b>	0.75	6	35	\$139	\$209
	<b>MMUFS41</b>	0.75	6	41	\$159	\$239
	<b>MMUFS35</b>	0.75	6	35	\$177	\$266
	<b>MMUFS41</b>		6	41	\$208	\$312

## 4" Toe Kick



	<b>MMTR18</b>	0.75	4	18	\$98	\$147
	<b>MMTR24</b>	0.75	4	24	\$99	\$149
	<b>MMTR30</b>	0.75	4	30	\$108	\$162
	<b>MMTR36</b>	0.75	4	36	\$110	\$165
	<b>MMTR42</b>	0.75	4	42	\$115	\$173
	<b>MMTR48</b>	0.75	4	48	\$118	\$177
	<b>MMTR54</b>	0.75	4	54	\$119	\$179
	<b>MMTR60</b>	0.75	4	60	\$122	\$183
	<b>MMTR66</b>	0.75	4	66	\$126	\$189
	<b>MMTR72</b>	0.75	4	72	\$130	\$195
	<b>MMTR78</b>	0.75	4	78	\$136	\$204
	<b>MMTR84</b>	0.75	4	84	\$142	\$213
	<b>MMTR90</b>	0.75	4	90	\$148	\$222
	<b>MMTR96</b>	0.75	4	96	\$158	\$237





## **NJ LAMINATES**

**A:** 23-I COMMERCE ROAD  
FAIRFIELD, NJ 07004

**T:** 973-227-0123