

# Recent Acquisitions

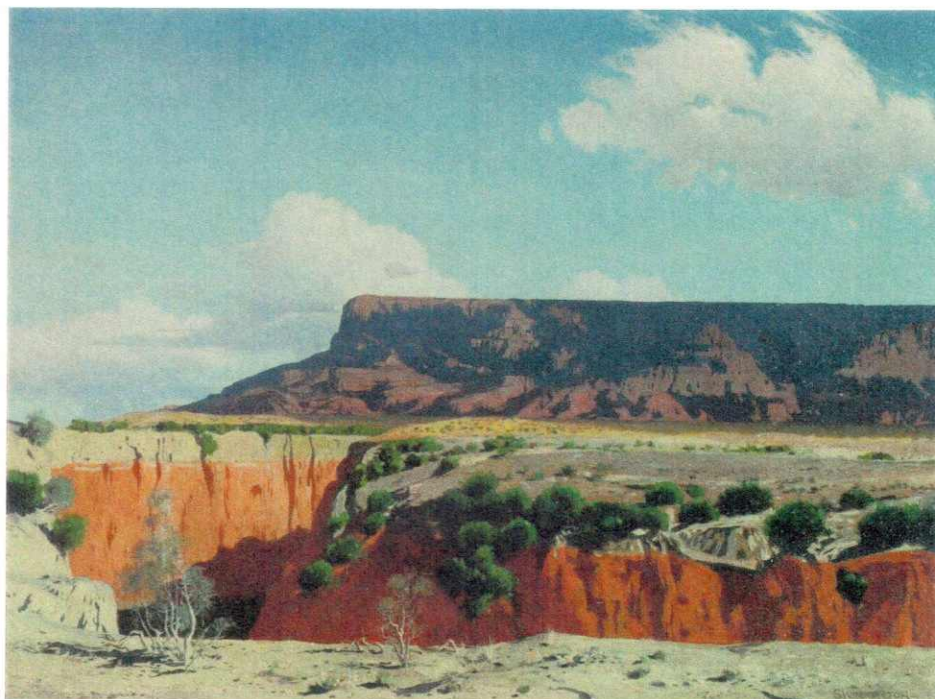
## at Phoenix Art Museum

**P**icturing the dramatic Southwestern landscape in a realist manner has been a challenge for artists for nearly two centuries. Two recent acquisitions, created roughly 80 years apart, demonstrate different artistic responses to the arresting mesas and cliffs of Arizona and New Mexico.

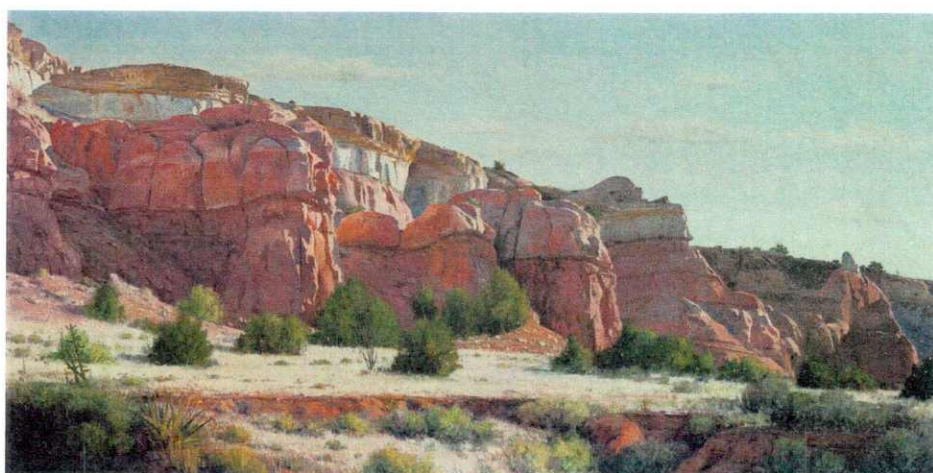
James Swinnerton's *Black Mesa, Navajo Reservation*, c. 1930, features a natural landmark from the northeast part of our state. Swinnerton (1875–1974) routinely painted the deserts of the Southwest in his unique, thinly-painted style, here contrasting the red-orange canyon walls in the foreground with the darkened and imposing mass of Black Mesa in the distance. Believable clouds float over the land, adding great depth to the composition.

Arturo Chávez's *Neapolitan Cliffs*, 2011, acquired through the Museum's recently held *The West Select Exhibition and Sale*, accurately pictures the striated cliffs of northwestern New Mexico. Chávez (born 1949) titled the work based on the cliffs' resemblance to chocolate, strawberry and vanilla layered ice cream.

*Both paintings are generous gifts from the Western Art Associates, a Museum support group, with funds from the J.M. Kaplan Foundation.*



James Swinnerton, *Black Mesa, Navajo Reservation*, c. 1930.



Arturo Chávez, *Neapolitan Cliffs*, 2011.