



# ANUVAN

## SYSTEM INTEGRATORS

### Engineering Services Available

- Robotics, PLC and HMI Programming
- SCADA, DCS, BMS
- Networks and Communications
- Machine Safety Risk Assessment
- Digital Twin and Simulation



**ANUVAN**

SIMPLIFYING INNOVATION



# WHO WE ARE

Introducing the latest addition to the global Automation and Controls Industry - a new company based in Egypt, bringing cutting-edge technology and expertise to the region. Our company is part of a network of worldwide companies (RK Controls USA – EDS USA - ITEC Lebanon - ITEC Qatar) with a proven track record in delivering innovative automation and control solutions to diverse industries.

With a team of highly skilled professionals and engineers, we are committed to delivering exceptional services and products that meet the unique needs of our clients in Egypt and beyond. Our state-of-the-art technology and software solutions are designed to improve productivity, efficiency, and safety while reducing operational costs and downtime by introducing solutions in Motion Control, Robotics, PLC, SCADA and DCS Automation Solutions, Variable Frequency Drives, and Industrial Networking.

At our core, we prioritize customer satisfaction and aim to build long-lasting relationships with our clients. We believe in open communication, transparency, and collaboration, working closely with our clients to understand their needs and provide customized solutions that exceed their expectations.

Our expertise covers a wide range of industries, including manufacturing, pharmaceutical, entertainment, oil and gas, food and beverage, and water and wastewater treatment. From designing and engineering to installation and maintenance, we provide end-to-end solutions that help businesses optimize their operations and achieve their goals.

We are proud to be part of a global network of companies revolutionizing the automation and controls industry. We look forward to bringing our expertise and technology to Egypt and the wider region. Contact us today to learn more about our services and how we can help your business thrive.

## VISION

To become a leading automation and controls engineering company in Egypt and the MENA region, recognized for its innovative and reliable solutions.

## MISSION

To deliver top-quality automation and controls engineering services, fostering long-term partnerships with clients and contributing to their success by maximizing efficiency and minimizing costs.





# OUR SOLUTIONS



## INDUSTRIAL CONTROL PANELS - ICPs

### Design and Fabrication

Our group has over 20 years of experience manufacturing custom Industrial Control Panels (ICPs) for various industries and applications. Our engineers will design a control solution to match your requirements and manufacturing environment. As a leading Industrial Control Panels (ICPs) manufacturer, we design each ICP to conform to our high-quality standards while being safe, reliable, and cost-effective.

- UL508A certified/listed Panel Shop across the partners
- 3D Model drawings for the complete electrical system.
- Layout Drawings for Panel Design of the Power distribution system.
- Data communication design system.



We Follow the safety compliance requirements of the UL 508A Standard for industrial control panels and the new requirements found in the National Electrical Code ® (NEC) Article 409 and UL 508A Supplement B.

- Low-Voltage Distribution Boards.
- ATS Control Systems – Synchronization Cabinets.
- Motor Control Centers.
- Industrial Control Panels (ICPs) for Industrial Automation.
- Network communication cabinets.
- Cabinets for lighting control and intelligent house installations.
- Cabinets for Building Management Systems.

## OUR SOLUTIONS



# PLC PROGRAMMING

## and HMI Development, Motion Control

**Anuvan** provides integration and programming for various automation & process control equipment.

Our extensive technical knowledge in the industry allows us to assist you with programmable logic controllers (PLC), human-machine interfaces (HMI), motion controllers, and other machine controllers.



- AC / DC Drives Siemens, ABB, Rockwell, Danfoss, Schneider, and Mitsubishi. Servo Drives and Stepper Motor applications.
- Networking: Ethernet I/P, Modbus TCP, Profinet, Profibus, ControlNet, BACnet (SNMP & DNP3 )
- Robots: Kuka, ABB, Fanuc, and Universal Robots.
- Seamlessly connect all your data, design any industrial application quickly, and instantly web-deploy unlimited industrial and mobile clients to anyone, anywhere.

- Dedicated to providing our clients with the latest industry solutions, our team is experienced with Siemens, Allen-Bradley®, Schneider, Beckhoff, and many others.
- High-Performance HMI development for any Process Control. DCS: Siemens, ABB, Honeywell, Schneider. SCADA: WinCC, Wonderware (Intouch, System Platform, Orchestra), RS View / Factory Talk, Citect, Ignition.



**OUR SOLUTIONS**



# SCADA

Digitalization is noticeably changing our world and the world of industry. The data volume in modern industrial plants is growing continuously. That brings new challenges for SCADA solutions; Enormous data volumes must be managed and archived for the long term. At the same time, production processes must be monitored and controlled as reliably, efficiently, and productively as possible. They must be constantly optimized. With its scalable open system landscape for the vertical integration of data from the production to the MES/ERP level up to cloud solutions, SCADA offers a solution ready for today's and tomorrow's challenges.



SCADA systems combine data from different subsystems and help create a unique and solid database. You can aggregate and centrally archive data and access important information any-time, anywhere. With SCADA, you establish the basis for reliable and efficient operation of plants, consistent product quality, high availability, and optimum resource efficiency. With a user-friendly HMI design, you benefit from excellent plant reliability and efficiency. With data mining, you can analyze data efficiently and evaluate it in a targeted manner. Also, benefit from receiving direct notifications and efficient diagnostics for shorter downtimes. Make use of SCADA for root cause analysis and benchmarking. And finally, identify optimization potential and measures for increased productivity and better operating efficiency.



## OUR SOLUTIONS

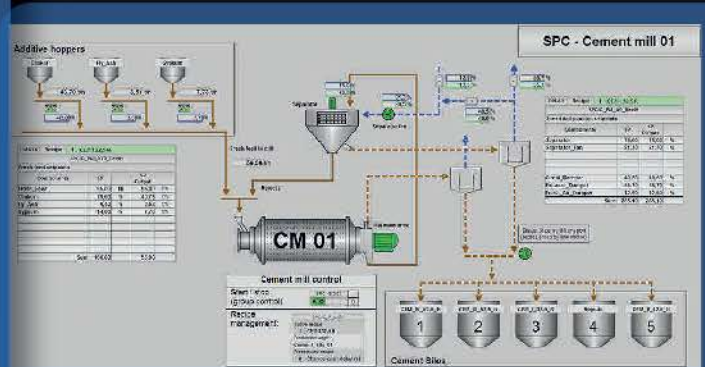


# DCS

A distributed control system (DCS) is a computerized control system for a process or plant, usually with many control loops. Autonomous controllers are distributed throughout the system, but central operator supervisory control exists.

This contrasts with systems that use centralized controllers, either discrete controllers located in a central control room or within a central computer. The DCS concept increases reliability and reduces installation costs by localizing control functions near the process plant, with remote monitoring and supervision.

Distributed control systems first emerged in large, high value, safety-critical process industries and were attractive because the DCS manufacturer would supply both the local control level and central supervisory equipment as an integrated package, thus reducing design integration risk. Today the functionality of SCADA and DCS systems are very similar. Still, DCS tends to be used on large continuous process plants where high reliability and security are important, and the control room is not geographically remote.



## Siemens Simatic Process Control System PCS 7

PCS 7 is one of the international leaders in process control systems and has the potential to implement innovative solutions for the special challenges associated with the process industry. The functional diversity, flexibility, and performance of the PCS 7 push the limits of a typical process control system, and its technological enhancements offer many additional possibilities and new perspectives.

PCS 7 benefits from its seamless integration in Siemens Totally Integrated Automation (TIA), a complete range of matched products, systems, and solutions for all hierarchy levels of industrial automation from the enterprise management level to the control level, all the way down to the field level. This enables integrated, customized automation in all process and hybrid industry sectors. An essential advantage of the consistency of the product and system spectrum and the solutions based upon this spectrum is that faster and more precise control sequences, as well as integrated security functions of shared hardware, engineering, and engineering tools, can be used for the automation of continuous and discontinuous processes.

**OUR SOLUTIONS**



# FUNCTIONAL SAFETY APPLICATIONS

Functional safety is part of the overall safety of a system or piece of equipment that depends on automatic protection.

This automatic protection system needs to respond correctly to its inputs. And it should have predictable responses to failure. This includes human errors, hardware failures, and operational/environmental stress. Safety standards are designed to ensure this happens. But they often come with complex requirements to be implemented.

## Risk Assessments

Risk Assessments are the essential first step in ensuring your machine is safely designed to mitigate risks for operators. In this phase of the safety life cycle, we identify hazards, estimate & evaluate risks, and define suitable mitigation measures to reduce risk to acceptable levels.

## Safety Functional Requirement Specifications

### Safety Control System Design

Anuvan and all partners have extensive experience designing safety control systems utilizing best-in-class automation hardware. Our custom and innovative solutions are tailored to each application for effective and efficient safety solutions.

### Safety Circuit Verification via SISTEMA

It is imperative to verify that your safety circuit design meets the required Performance Level determined in the Risk Assessment. Our engineers calculate the Performance Level & Category achieved by new and existing safety circuits.



## OUR SOLUTIONS



## Mechanical Hard Guarding

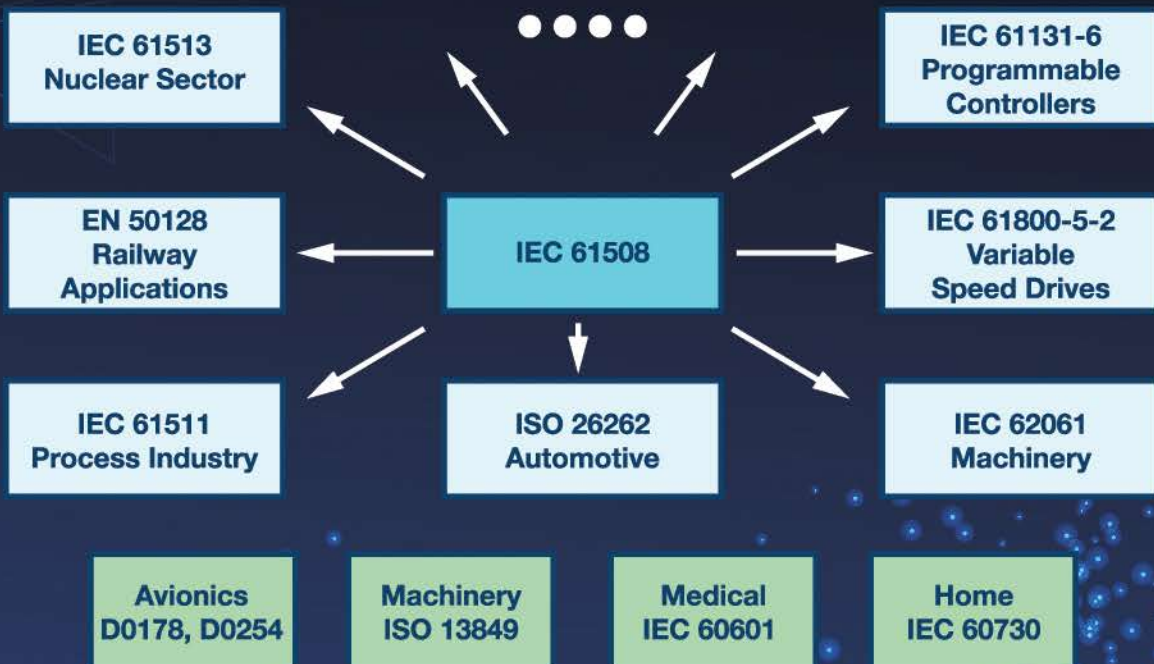
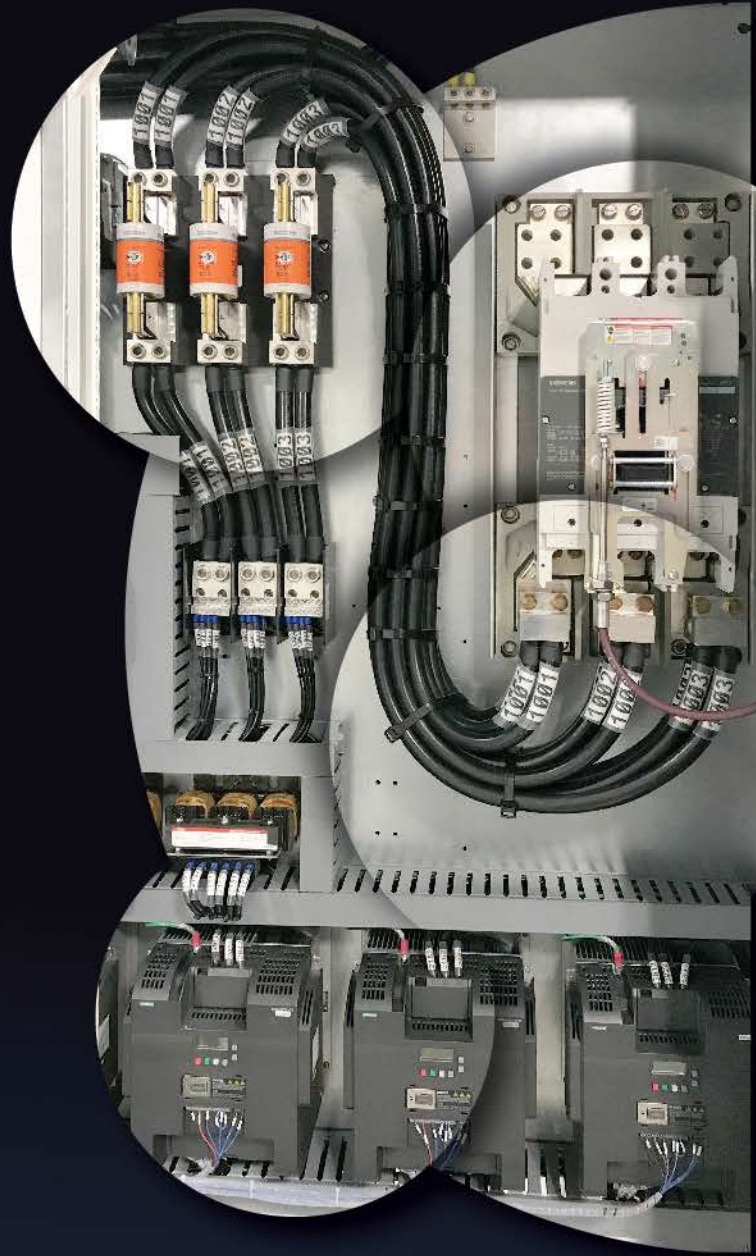
One of the most effective and straightforward mitigation techniques is hard guarding. We design, build and install custom hard guarding to ensure ANSI, ISO, and OSHA requirements are met.

## Validation

Anuvan commissions safety systems on-site and completes a rigorous validation procedure. Our validation procedures are thoroughly documented. Validation is crucial to certify that the safety circuit functions per the design.

## Safety Consulting

Machine safety can be overwhelming. Let our Certified TUV Functional Safety Engineers guide your team through the standards and regulations. Understanding the fundamentals of machine safety is essential to provide a safe work environment for your team.



**OUR SOLUTIONS**



# VIRTUAL COMMISSIONING

Virtual commissioning uses 3D technology to create a factory floor process simulation model so that changes and upgrades can be tested before they are implemented in existing plant systems.

This virtual environment allows a manufacturing automation controls engineer to validate programmable logic controllers (PLCs) and human-machine interface (HMI) code before they are downloaded to actual equipment; therefore, testing the tooling, robots, transfer lines, and other equipment that comprise highly automated manufacturing systems.

Using digital models, computer-aided planning and design, computer-aided engineering, associated software tools, and integrated data management, the “Digital Factory” would permit integrated planning, simulation, and validation of manufacturing processes and systems.



## OUR SOLUTIONS



# IOT

**INTERNET OF THINGS:** Connect operational devices and users for Industry 4.0 initiatives without recreating the existing business processes or IT systems. Match the cost, complexity, and security profile for today's scale.

## REMOTE MAINTENANCE

Increase productivity, uptime, efficiency, and profitability with less travel and maximize customer satisfaction with the industry's most powerful remote access technology.

## DATA COLLECTION

Using the secure and reliable data collection infrastructure enable data-driven decision-making and Industry 4.0 initiatives, including predictive maintenance, machine learning, and AI.

## ACCESS CONTROL

Manage and grant access rights to operational systems from a single view effortlessly with no IT skills.

# ROBOTS

## Delta robots feed the need for speed.

With their spindly arms and quick motion, spiders are among nature's quickest and most efficient assemblers.

Delta robots are similar in current and future industries where fast, reliable, and accurate motions are needed. This parallel-link robot, where the major axes are mechanically connected in parallel, provides great motion advantages with explosive speed, accelerations, and a high-duty cycle.

The Delta Robot developed by Automate (Our Partner) offers the following:

- . Integrated vision software
- . Ease of program customization
- . Shortest cycle times with high precision and accuracy
- . High-capacity enduring large payload vision software
- . Customizable design appropriate to the industry application
- . Superior tracking performance
- . Easy integration into machines and production lines
- . Gentle handling of products





# INDUSTRIES:

## Entertainment

Your creative ideas are heard by our team, who then apply their years of experience to provide answers. The combined creation of fascinating shows and impactful experiences is made possible by our engineering skills and capacity to translate creative designers' visions. Assisting in creating unique solutions, rides, show systems, and other technology for theme parks (Universal Studios & Disney Land).

**Anuvan** offers specialized control systems made for animatronic character motion. Controlling animation is a challenging application. We employ advanced closed-loop motion control with compliance, depending on the size and complexity of the animated element. There are numerous sizes and degrees of complexity for animatored figures.



We have expertise working with large numbers of figures under challenging environmental circumstances. Anuvan is skilled at providing systems that address safety issues, such as animated figures that work with live actors or figures with space restrictions that could harm the figure. We have advanced cutting-edge systems by enabling the direct importation of animated sequences created in modeling programs like Maya, 3D Max Studio, and Unity.



## OUR SOLUTIONS



## Food and Beverage and Pharmaceutical

Supplying and maintaining cutting-edge materials handling and logistics solutions for various niche markets, including the automotive and healthcare industries.

By offering engineering solutions, knowledge, and manufacturing services, complex situations can be worked on safely and effectively. Anuvan creates, manufactures, and manages unique maritime and specialized systems for government and commercial clients.



Creating practical solutions and delivering trustworthy systems is made possible by engineering competence combined with substantial offshore experience. Implementing integrated solutions throughout the oil and gas lifecycle to increase value, lower the total cost of ownership, and decrease risk globally.



## Aerospace/Oil and Gas

By incorporating robotics and automated technical solutions, constructing and using new and old technologies to address the difficulties of working on special projects and other extreme environments. We improve productivity and efficiency of operations, enable new capabilities and operations in the field, and reduce human exposure to potentially dangerous situations to carry out mission-critical activities in incredibly complicated situations, robotic manipulators, end effectors and tools, sensors, control systems, and vision technologies at the top of their industries.



## From wind to clean energy

100% WIND POWER

Wind turbines are clean power harvesters converting the wind's kinetic energy into electric power by rotating about their either vertical (VAWT) or horizontal axis (HAWT).

The VAWT developed by our group is custom-made to suit the installation location wind regimes even at low wind speeds. These vertical axis systems outperform traditional large HAWTs in urban regions with turbulent wind profiles due to their ability to run smoothly, independently from the wind direction.

**SOLAR ENERGY The Power of the Sun**

The Sun is the ultimate Source of Energy soon. Everyone recognizes the glistening rooftop panels or the arrays covering someone's backyard. These are common sights, but this is only part of what drives industry and the world to greener living. Solar radiation may be converted directly into electricity by photovoltaic cells. In such cells, a small electric voltage is generated when light strikes the junction between a metal and a semiconductor or the junction between two different semiconductors.



### Advantages

- Renewable Energy Sources
- Electric Bills Reduction
- Low Maintenance Costs
- Reduction in Carbon Emissions



### Applications

- Residential heating & lighting
- Supplying remote areas with electricity
- Low Maintenance Costs
- Small gadgets powering

**OUR SOLUTIONS**



## BUILDING MANAGEMENT

A building management system (BMS) is a control system that can be used to monitor and manage the mechanical, electrical, and electromechanical services in a facility, whether it is a Tunnel, Airport Facility, Hospital, Tower, or any large building, such services can include power, heating, ventilation, air conditioning, access control, pumping stations, elevators, and lights but not limited to it.

### Energy Efficiency

Building automation and control is particularly effective in reducing energy consumption and demand. Compared to improvement measures involving the building shell or mechanical equipment, building automation and control generally requires a smaller investment. While achieving significant energy savings, reduced emissions, and the quickest simple payback time.

Siemens Building Technology is continuously developing ways to make energy efficiency more manageable through:

- Superior quality products that boost industry-leading control accuracy.
- Innovative control applicants are designed specially to optimize energy usage and reduce costs.
- Simplified monitoring and reporting functions that make energy management decisions easier.



### OPERATION & MAINTENANCE COST

- Analyze and monitor how energy is consumed.
- Create automated energy-efficient measures in unoccupied areas of the building.

### BENEFITS TO OCCUPANTS

- Individual Room Control.
- Better Management of time and money.
- Better control of internal comfort conditions.

### BENEFITS TO BUILDING OWNERS

- Higher property value.
- Central remote control of the building.



**OUR SOLUTIONS**



# Why Choose Anuvan ?

## PARTNERSHIP WITH Cutting Edge BUILDING TECHNOLOGY Suppliers

As a trusted advisor, reliable partner, system integrator, service provider, and product vendor, our partnership with Siemens offers energy-efficient, safe, and secure buildings and infrastructure.

With our people, global footprint, decades of experience, and technical expertise, it's our passion to help you create the perfect place.

## AFTER-SALES SUPPORT

Over the years, Our group developed a comprehensive range of maintenance services. Our maintenance service packages are available with a range of options designed to give our customers complete flexibility over the type of cover that best suits their requirements and budget. Our staff is always available [24/7] for on-site audits, start-ups, maintenance, troubleshooting and repair of products critical to your processes.

Services Offered Include

- PLC troubleshooting.
- Drive diagnostics, troubleshooting, and start-ups.
- Maintenance and service agreements.
- Low voltage [<600V] wiring and troubleshooting.
- Industrial PC upgrades.
- Installed base evaluations.
- Training.

## PRE-INSTALLATION SERVICES

Whenever a product is bought, it comes with a manual for installation. Depending on the nature of the product, the installation may vary. While some products have very specific installation steps, others are customer friendly.

## USER TRAINING

Training of the end user is another part of after-sales service. In the case of industrial machinery, this is a very crucial part. It is essential that user training is provided so that the user will be handling the product.



Why Choose Anuvan ?



## WARRANTY SERVICES

This is perhaps the most common type of after-sales service provided by almost every company for almost every product. Warranty services include repairing and replacing selected parts for a selected period.

## LATEST TECHNOLOGY

Our customers and employees are always in training to get exposed to the latest technologies offered for the industrial marketplace. Many projects are put together in our lab by our customers to ensure all work meets their expectations before fully implementing them in their factories. Many issues can arise and get resolved with low risk in the lab. Our quality control team ensures compliance with UL508 and ISO9001—biweekly meetings and presents on track wire technicians' progress and mistakes. A detailed report on the types of errors and remedies seen weekly is given to the employees and management.



## ON-SITE SERVICE & MAINTENANCE

We have engineers with disciplines of electrical, electronic, and automation personnel. In addition to the fitting of the plant, our site maintenance teams can carry out a wide range of other work in the form of plant inspections as part of preventive maintenance initiatives, fault finding, repairs of equipment on site, or the commissioning of drives or other electronic equipment.

## RETURN / REPLACEMENT

For a limited time, companies provide free product replacement in case of any queries. However, this is with specific terms and conditions. In some cases, replacement may be of the entire device, or in other cases, and replacement may be only of the defective part.



**Why Choose Anuvan ?**



## Support in developing the following:

- Wiring and fabrication.
- Drawings loop diagrams.
- Interconnect diagrams.
- Point-to-point drawings.
- All wiring and fabrication drawings conform to CE rules and regulations and International Standards and all loop interconnect diagrams conform to global standards. In addition, all drawings are drafted on workstations using the latest version of Engineering Softwares.
- We supply system configuration, detailed design drawings, systems integration, programming, and equipment specifications, including field and communication devices.

## YOUR PROBLEM IS OUR PRIORITY

We're in the same business as you. Because ultimately, our business is to help your business thrive and prosper. Coming up with new designs and products is tough enough without the burden of the administration of an electrical group to fabricate the control cabinets for the products you market and sell. We have the people and experience to make this part of the job more accessible, certain, and profitable.

Whatever your unique needs or circumstances, the salesperson you already know will build a custom-made team that fits you best.

Our top priority is understanding your business, market, and goals. We're here to take on your challenges, to shoulder some of your responsibilities. Leaving you free to get on with your business to focus on what matters most to you.



## Why Choose Anuvan ?



# WHY CHOOSE ANUVAN



**Why Choose Anuvan ?**



# PREFERRED SUPPLIERS ACROSS OUR PARTNERS

**SIEMENS**

**MERSEN**

**BECKHOFF**

**M** HAMMOND  
**W** MANUFACTURING®

**ProSoft**®  
TECHNOLOGY

**TGI**  
An Allied Motion Company

**CONTA CLIP**

**CTI** Control Technology, Inc.

**PANDUIT**®

**EE** CONTROLS

**IDEC**  
Think Automation and beyond...

**HPS** Hammond  
Power Solutions

**molex**

**Anybus**®  
BY HMS NETWORKS

**APPLETON**

**RITTAL**

**HMS**

**pilz**  
the spirit of safety

**GRACE**  
TECHNOLOGIES

**CONDUCTIX**  
wampfler

**thermokon**®  
HOME OF SENSOR TECHNOLOGY

**bürkert**  
FLUID CONTROL SYSTEMS

**EWON**®  
BY HMS NETWORKS

**MTE**  
POWER QUALITY. SOLVED.  
A STEEL PARTNERS COMPANY

**wieland**

**king**

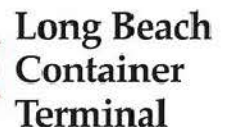
**socomec**  
Innovative Power Solutions

**COMSYS**

**MIRUS**  
International Inc.



# PARTIAL LIST OF OUR CLIENTS - USA





# PARTIAL LIST OF OUR CLIENTS - QATAR





# PARTIAL LIST OF OUR CLIENTS - LEBANON





## OUR OFFICES

### **Anuvan**

Egypt  
since 2023

Address : Building P5, Unit 408, Cairo festival City, 5th Settlement  
Email : info@anuvan.com  
Website : www.anuvan.com  
Tel : +20 120 352 2210

### **RK Controls**

USA  
since 1978

5901 Corvette Street | Los Angeles, CA 90040  
Toll Free: (877) 305-8451 | Tel: (323) 887-7066  
Fax: (323) 887-8076 | 24 Hour Service: (213) 718-6959

### **EDS**

USA  
since 2012

5901 Corvette Street | Los Angeles, CA 90040  
Toll Free: (877) 305-8451 | Tel: (323) 887-7066  
Fax: (323) 887-8076 | 24 Hour Service: (213) 718-6959

### **Automate**

Germany  
since 2013

Barschenweg 10, Erlangen 91056  
Tel: +490 151 64953079

### **ITEC**

QATAR  
since 2012

Al Dafna, Zone 60, Al Markhiya, Str. 950, Bldg 24, Al Nasr Tower A,  
10th Floor. P.O. Box 10573  
Workshop: Industrial Area Zone 57, Streer 541, Building 20, Doha, Qatar.

### **Automate**

Lebanon  
since 2002

Point Center, Sin El Fil, Beirut, Lebanon. P.O. Box 27111  
Tel: +96 114 91161  
workshop: Main Road, Hbaline, Amchit, Jbeil, Lebanon

