



VENOFYE®

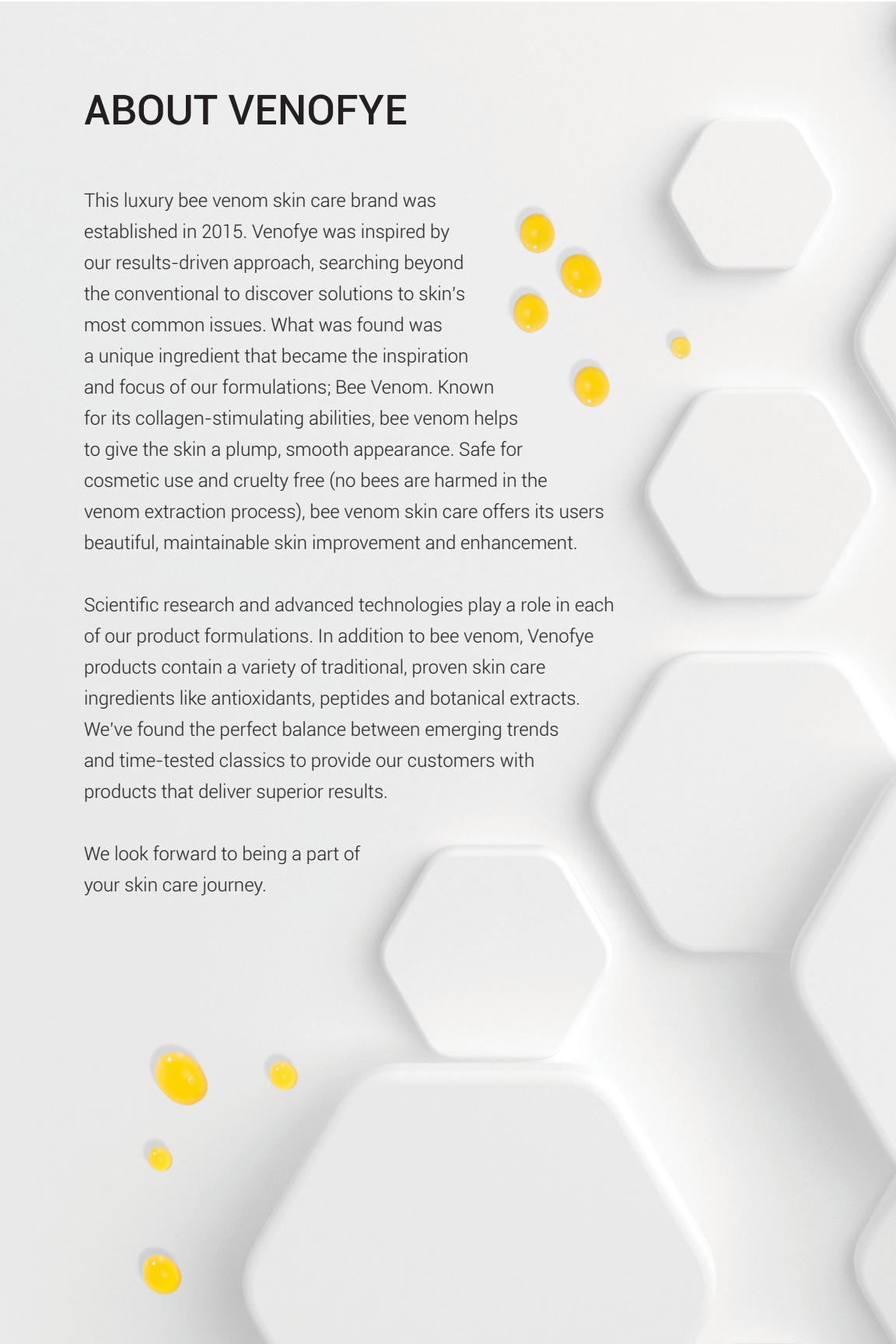
**A COMPLETE
STEP-BY-STEP
INSTRUCTION
GUIDE**

ABOUT VENOFYE

This luxury bee venom skin care brand was established in 2015. Venofye was inspired by our results-driven approach, searching beyond the conventional to discover solutions to skin's most common issues. What was found was a unique ingredient that became the inspiration and focus of our formulations; Bee Venom. Known for its collagen-stimulating abilities, bee venom helps to give the skin a plump, smooth appearance. Safe for cosmetic use and cruelty free (no bees are harmed in the venom extraction process), bee venom skin care offers its users beautiful, maintainable skin improvement and enhancement.

Scientific research and advanced technologies play a role in each of our product formulations. In addition to bee venom, Venofye products contain a variety of traditional, proven skin care ingredients like antioxidants, peptides and botanical extracts. We've found the perfect balance between emerging trends and time-tested classics to provide our customers with products that deliver superior results.

We look forward to being a part of your skin care journey.



APITOXIN COLLECTION

1. Apitoxin Collagen Mask

- Use once a week.
- Apply a generous amount to fresh clean skin.
- Start around the eye area and work your way all over your face and neckline.
- Leave on for 10 minutes and then rinse off with cool water.
- For best results, follow with Apitoxin Collagen Cream.

2. Apitoxin Collagen Cream

- Use once a week or as directed by your beautician. Apply a generous amount to clean skin.
- Massage gently until fully absorbed.
- Use in combination with the Apitoxin Collagen Mask.

3. Apitoxin Collagen Night Recovery

- Apply at night time onto cleansed skin.
- Massage in circular motions until fully absorbed.



Notes:

QUEEN BEE COLLECTION

1. Queen Bee Clarifying Cream Cleanser

- Use once to twice a week.
- Apply to cleansed, newly dry skin.
- Massage in circular motions.
- Best used after Queen Bee Facial Peeling.

2. Queen Bee Vitamin C Serum

- Use on freshly cleansed skin.
- For best results, use in combination with Queen Bee Day Moisturizer.

3. Queen Bee Neck & Chest Mask

- Apply one to cleansed neck area and one to cleansed chest area.
- Relax for 15 minutes.
- Remove mask and rinse away left over residue.
- Use once every 3-4 weeks and discard after every use.

4. Queen Bee Neck Lift

- Use daily.
- Apply a generous amount to neck area.
- Massage gently until fully absorbed.

5. Queen Bee Ageless Energizing Mask

- For optimal results use once monthly.
- Remove each mask from its packaging. Immediately applying to your face or under eyes.
- Tap and smooth the mask with your fingertips until it lays flat.
- Wear the mask for 15-20 minutes before rinsing with cool water.



BLOSSOM BEE COLLECTION

1. Blossom Bee Skin Cleansing Kit

- MILK CLEANSER
- Apply generously to cotton pad
- Wipe face and neck areas.
- Repeat as needed.
- SKIN TONER
- Saturate cotton pad with toner.
- Wipe across face and neck area.
- Repeat as needed
- Use Daily.

2. Blossom Bee Facial Peeling

- Use once to twice a week.
- Apply to dry skin. Massage in circular motions.
- Rinse with warm water.

3. Blossom Bee Day Moisturizer

- Use daily.
- Apply a generous amount to cleansed skin.
- Massage in circular motions until fully absorbed.

4. Blossom Bee Night Cream

- Apply to cleansed skin in the evening.
- Gently massage onto face and neck using circular motions.

Notes:



DRONEBEE COLLECTION

1. DroneBee Men's After Shave Balm

- Apply a small amount to clean skin.
- For best results, apply after shaving.

2. DroneBee Tool Kit

- Thoroughly wash face and neck with cleanser of choice.
- Apply a warm or hot towel to face and neck to soften hairs before shave.
- Apply a liberal amount of Drone-Bee Pre-Shaving Gel to face and neck, massaging onto skin until rich lather is achieved.
- Begin shaving by tensing targeted area of your skin for smoothest possible shave.
- Shave first in the direction of the hair growth, then reverse direction of the same area to complete the shave.
- After all areas have been shaven, rinse clean with cool water.
- Apply a small amount of Drone-Bee Men's Balm to clean, dry skin, gently massaging in upward movements until absorbed.



Notes:

ORCHARD BEE COLLECTION

1. Orchard Bee Elevating & Balancing Mask

- Apply weekly to cleansed skin.
- Leave mask on for 10 minutes.
- Rinse off with cool water.
- For best results, use with Orchard Bee Dark Spot Solution.

2. Orchard Bee Dark Spot Solution

- After washing your face, apply directly onto areas of concern.
- Follow with moisturizer.
- For best results, follow with the Orchard Bee Elevating & Balancing Mask.

3. Orchard Bee Brilliance Cream SPF 30

- Apply daily to clean skin.
- For best results, use with the Orchard Bee Dark Spot Solution.



Notes:

ROYAL JELLY BEE COLLECTION

1. Royal Jelly Bee Luminescent Eye Serum

- Use daily.
- Gently massage a small amount into clean skin around the eye area, focusing on deep lines and wrinkles.
- To improve results, follow with Royal Jelly Bee Eye Firming Cream.

2. Royal Jelly Bee Eye Firming Cream

- Apply to freshly cleansed skin.
- Gently apply Royal Jelly Bee Eye Firming Cream under eye area and massage until fully absorbed.
- For best results, use in combination with Royal Jelly Bee Luminescent Eye Serum.

3. Royal Jelly Eye Beelift

- Use once a week.
- Use on cleansed skin.
- Gently press on the top of the applicator to dispense a small amount of product.
- Sweep the applicator across the under eye area to distribute product.
- If necessary, lightly pat product until absorbed.
- Wipe tip clean after each use.

4. Royal Bee Rapid IV Plump Infusion

- Start by twisting the top of the applicator.
- Use the projected pump to apply 1-2 pumps onto fingertips, then pat this over fine lines and wrinkles on the face.
- Use as needed.



IRON BEE COLLECTION

1. Iron Bee Magnetic Mask

- To use, apply a thin, even layer to clean, dry skin.
- Allow 10 minutes to set.
- To remove the mask, insert the enclosed magnet into a sachet, hovering the magnet close to your skin and witness as it magically lifts away.
- Massage remaining oils into your face and neck.
- For optimal results, use weekly following with Iron Bee Boosting Serum.

2. Iron Bee Boosting Serum

- Use weekly after applying Iron Bee Magnetic Mask.
- Release 1-2 pumps onto your finger tips, gently massaging over face and neck until absorbed.
- For best results, follow with Iron Bee Transforming Cream.

3. Iron Bee Transforming Cream

- Apply daily, massaging a small amount to freshly cleansed skin.
- As the cream is spread onto your skin, it will transform into small droplets before absorbing for a luminous result.
- Avoid application to eye area. For best results, use in combination with Iron Bee Magnetic Mask and Iron Bee Boosting Serum.

4. Iron Bee Skintight Syringe

- Apply as needed to cleansed skin.
- Unlock and press top of syringe to dispense formula.
- Apply directly to area of concern and gently tap to evenly disperse.
- Remain emotionless as product sets.
- Do not rinse of.



BEEHIVE COLLECTION

1. Beehive Hydralift Mask

- Apply weekly to cleansed skin.
- Leave on for 10-15 minutes.
- Massage into skin as droplets form.
- Do not rinse off.

2. Beehive Hydracap

- Apply weekly to cleansed skin.
- Simply break apart 1-2 capsules.
- Apply serum, contained within each capsule, and spread evenly to face.
- Allow serum to absorb. Do not rinse.

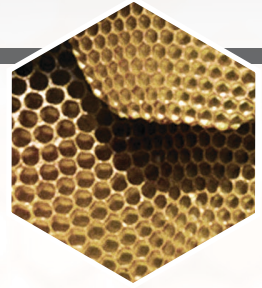
3. Beehive Hydralift Silk Cream

- Apply daily to cleansed skin.
- Spread evenly to entire face.
- Gently massage into skin for maximum absorption.



Notes:

KEY INGREDIENTS



Bee Venom

A mild dose of bee venom can have a positive impact on the skin, encouraging it to react as though it has endured a bee's sting. This causes it to produce collagen that keeps skin resilient, healthy, and smooth.



Aloe Vera

Aloe vera is one of the oldest, most widely used skin care ingredients, sourced naturally from aloe leaves. It's soothing effect is more than just a pleasant sensation, as it has been shown to improve healing from burns and skin disorders, moisturize dry skin, and reduce the signs of aging.

Green Tea Extract

Drinking green tea is beneficial for our health due to the number of cell-strengthening antioxidants it contains. Applied topically, green tea extract can be just as beneficial to the skin, providing an anti-inflammatory effect, promoting healing, and helping to reduce the appearance of fine lines.



Shea Butter

Shea butter comes from the nut of the shea tree, long considered sacred in its African homeland for its ability to protect the skin from dry, sunny conditions. Antioxidants, a moisturizing effect, and protection from UV exposure make shea butter an excellent anti-aging ingredient.



Vitamin C

Vitamin C has been renowned for its health effects for generations, and it makes for a critical addition to any skin care regimen. It can help lighten dark spots and brighten the skin, enhance UV protection, boost collagen production, and provide the deeper antioxidant benefits of reduced free radicals and lower cancer risk.



Vitamin A

Vitamin A has been used for a wide range of skin care benefits. As an antioxidant, it protects cells from free radical formation, a process that contributes to faster healing and tighter, smoother skin that is more resilient to damage from the sun or other environmental factors.



Vitamin E

Vitamin E is one of the best-known antioxidants. It is essential to incorporate vitamin E into your diet or skin care regimen as it can protect the skin from sun exposure and the signs of aging.



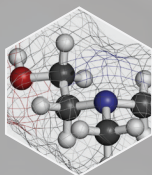
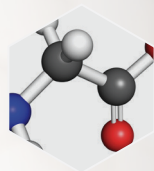
Synthetic Snake Venom/ Synake

(Diaminobutyroyl Benzylamide Diacetate) * As seen in the Viperlift collection

A harmless artificial version of the real thing – has been touted as a safer alternative to Botox. This tripeptide puts a temporary hold on muscle twitches and spasms, which can contribute to the formulation of wrinkles and aging.

Acetyl Hexapeptide-8

Acetyl hexapeptide-8 is another peptide said to have similar effects to those of Botox, though with far less risk of unintended consequences. This means it intercepts neural signals that cause muscle contractions beneath the skin – one contributing factor in the appearance of lines and wrinkles.

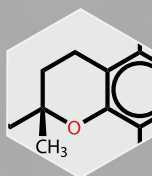
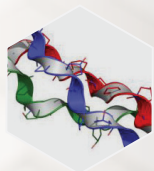


DMAE

Dimethylaminoethanol, or DMAE for short, has been studied as a mood-enhancing and mind-sharpening ingredient, though evidence has also pointed to its effectiveness in keeping the skin feeling firm, supple, and wrinkle-free.

Collagen

Collagen is the natural substance produced by skin to heal wounds and keep it soft and supple, but the production of collagen tends to slow down with age. Its addition in skin care products can assist the body's natural production of collagen, leading to stronger, more beautiful looking skin.

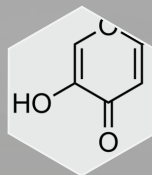
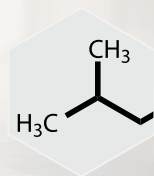


Palmitoyl Oligopeptide

Palmitoyl oligopeptide combines peptides, which inhibit muscle spasms that can lead to lines and wrinkles, with palmitic acid to promote collagen production and assist the skin's natural healing abilities.

Hyaluronic Acid

Hyaluronic acid is an essential part of the skin's healthy balance, keeping it hydrated and receptive to nutrients that can promote healing and prevent lasting lines and wrinkles. Applying it topically can help bring strained or aging skin back into a healthy equilibrium.



Kojic Acid

Kojic acid is a safe means of mildly brightening the skin, making it a useful ingredient to fade the look of blemishes or scars from skin disorders like rosacea and eczema.

PRODUCT	DAILY		ONCE A WEEK		TWICE A WEEK		EVERY OTHER WEEK (TWICE A MONTH)		COMMENTS
	AM	PM	AM	PM	AM	PM	AM	PM	
Queen Bee Neck & Chest Mask								ONCE A MONTH	
Queen Bee Neck Lift	•								
Queen Bee Night Cream		•							
Queen Bee Ageless Energizing								ONCE A MONTH	
ViperLift Bio Cream	•								
ViperLift Bio Mask				• FIRST MONTH				ONCE A MONTH (AFTER INITIAL MONTH)	
ViperLift Bio Serum	•								
Beehive Hydralift Mask				•					
Beehive Hydracap				•					
Beehive Hydralift Silk Cream		•							
Iron Bee Skintight Syringe	AS NEEDED								
Iron Bee Magnetic Mask				•					
Iron Bee Boosting Serum				•					
Iron Bee Transforming Cream		•							



VENOFYE®



WWW.VENOFYE.COM

    | VENOFYE