



Tiedowns & Strapping



1973 - 2023

# Catalog



(936) 867-4801



[info@boss-strapping.com](mailto:info@boss-strapping.com)



[BOSS-Strapping.com](http://BOSS-Strapping.com)

# ENGINEERED FOR SAFETY

BOSS's weaving process works to hold your materials safely in place whether you transport across the yard or across the country.



## THE BOSS DIFFERENCE

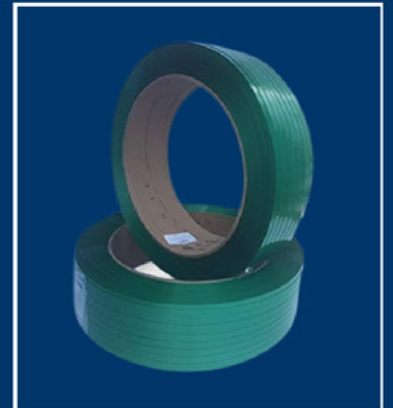
### Safer than Steel

- No more injuries when banding is cut
- No more damaged product from sharp edges
- BOSS Strapping can handle lumber dumps



### More efficient than PET

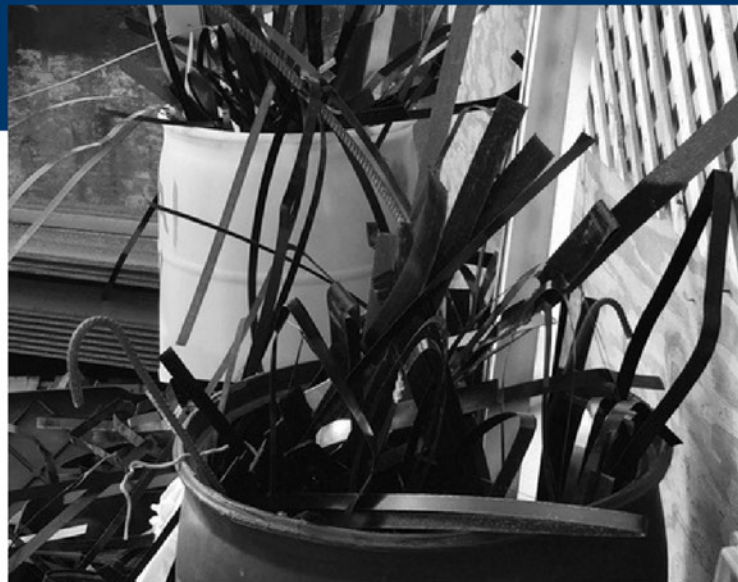
- On average, 1 band of BOSS Strapping equals 3 bands of PET.
- Save time by banding less
- Save money by using less banding
- Banding tools for BOSS Strapping are 1/10 the cost of tools for PET.



### Safer than Other Woven Strapping

- BOSS starts with better materials.
  - BOSS's yarn has the optimal amount of stretch to accommodate load shifting.
- BOSS uses a better process.
  - BOSS's weaving process uses a stitch that holds even if the strap is cut part way through.
- BOSS has a better system.
  - BOSS Strapping is more than strapping. We are a partner in safety for your team.

# Is the use of Steel Banding Stealing Money from your Bottom Line?



Although steel banding has been used widely in the Truss and Wall Panel Industry for decades, it is no longer your only or best choice.

BOSS Strapping, either woven or composite provides you with the opportunity to use a safer, stronger, more versatile strapping solution.

**Why have *THOUSANDS* of yards made the switch?**

*Stable Pricing*  
*Flexible Product Solutions*  
*Cost Effective Tooling*  
*Lean Efficiency*

Call to find out more (936) 867-4801  
BOSS-Strapping.com  
orders@boss-strapping.com

Scan  
Now



Watch  
Video



## BEST OVERALL STRAPPING SYSTEM

# STRAPPING & BUCKLES

## THE RIGHT START FOR THE BEST OVERALL STRAPPING SYSTEM

### Woven Polyester Strapping

Item Description	Item #	Tensile Strength	Linear Feet per Coil	Packaging	Buckle Size
 5/8" Oscillated Wound	1500-58	1500 lbs	2000	2 coils per box 27 boxes per pallet	16mm
 3/4" Oscillated Wound	1800-34	1800 lbs	1650	2 coils per box 27 boxes per pallet	19mm
 3/4" Oscillated Wound	2400-34	2400 lbs	1650	2 coils per box 27 boxes per pallet	19mm
 3/4" Oscillated Wound	2700-34	2700 lbs	1650	2 coils per box 27 boxes per pallet	19mm
 3/4" Oscillated Wound	2950-34	2950 lbs	1650	2 coils per box 27 boxes per pallet	19mm
 1" Oscillated Wound	2700-1	2700 lbs	1650	2 coils per box 27 boxes per pallet	25mm
 1 1/4" Oscillated Wound	3900-114	3900 lbs	1100	2 coils per box 27 boxes per pallet	32mm
 1 1/2" Oscillated Wound	5400-112	5400 lbs	800	2 coils per box 27 boxes per pallet	32mm

Only top quality materials are used in BOSS Strapping, assuring the best quality and safest product possible. From production to packaging, you can count on BOSS for Quality and Convenience.



# THE BOSS DIFFERENCE

## Why is BOSS Strapping better than other woven strapping?

### TENSILE ELONGATION

The amount of stretch in woven strapping is important because it directly affects the strapping's ability to hold and secure a load during transportation or storage.

If the strapping has too little stretch, it may not be able to absorb shocks or vibrations that occur during transportation, which can cause the load to shift and potentially result in damage or even loss of the load.

On the other hand, if the strapping has too much stretch, it may not be able to maintain the necessary tension to keep the load secure, which can also lead to load shifting and damage.



BOSS Tiedowns and Strapping is a family-owned company and has been for 50 years. The owner has always ordered the materials that build the strap so quality is guaranteed.



**Scan here to see a demo of our strap being cut and re-tensioned- and still not breaking!**

The yarn used in BOSS Strapping has an elongation that is optimal for transporting goods across the yard or across the country.

It allows for enough stretch to accommodate jostling but not so much stretch that the bundle comes loose.

### But the differences don't stop there.

The weaving process at BOSS Tiedowns and Strapping uses a lock stitch- which means that even if the strapping gets nicked or partially cut- the strap still has partial strength making it less likely to break.

Testing is done on site and routinely exceeds industry standards meaning that BOSS customers often get stronger strap than they are paying for.



When BOSS manufactures strap, we aren't just thinking about the safety of the load builder, or the person using the strap at the jobsite. We are thinking about the safety of everyone along the route- whether the load is being moved across the yard or across the country.

**Let one of our industry experts help you determine the right system for your needs to keep your team running safely and efficiently for years!**

## Phosphate Buckles

The BOSS benefit is about more than just the best strapping. Its about using the Best System: from strapping to buckles to tools.

Item Description	Item #	Packaging	MM
16mm (5/8") 0.147 Phosphate Coated Buckle	<b>BUC58</b>	1000 per Carton 48 boxes per pallet	<b>16mm</b>
19mm (3/4") 0.159 Phosphate Coated Buckle	<b>BUC34</b>	1000 per Carton 48 boxes per pallet	<b>19mm</b>
19mm (3/4") 0.177 Heavy Duty Phosphate Coated Buckle	<b>BUC34HD</b>	1000 per Carton 48 boxes per pallet	<b>19mm</b>
25mm (1" - 1 1/4") 0.192 Phosphate Coated Buckle	<b>BUC114</b>	500 per Carton 48 boxes per pallet	<b>25mm</b>
32mm (1 1/2") 0.272 Phosphate Coated Buckle	<b>BUC112</b>	250 per Carton 48 boxes per pallet	<b>32mm</b>



Choosing the right buckle for the strap you use is just as important as choosing the right strap because it effects your joint efficiency.

A High joint efficiency means that more of the strap's breaking strength can be utilized resulting in a stronger and more secure strapping system. This is especially important for heavy or valuable loads that need to be transported over long distances or through rough terrain.



A Lower joint efficiency, on the other hand can increase the risk of the strap slipping or breaking under stress leading to load shifts, or accidents.



Threading  
Strap  
through a  
Buckle





## BOSS Lifting Loops

After hearing from several wall panel manufacturers - one concern came up multiple times - we need a new, low cost way to safely lift exterior wall panels into place.

### SAFER

Each loop is rated and imprinted so that inspectors can quickly identify the weight limits and manufacturer.

### FASTER

No more wasted time retrieving straps, or modifying sheathing.

### MORE EFFICIENT

Reduce labor cost and wasted time: safely set the panel, and cut the loop.



WALL PANEL LIFTING LOOP \*Working Load Limit Vertical \*900 lbs Choker \*750 lbs B

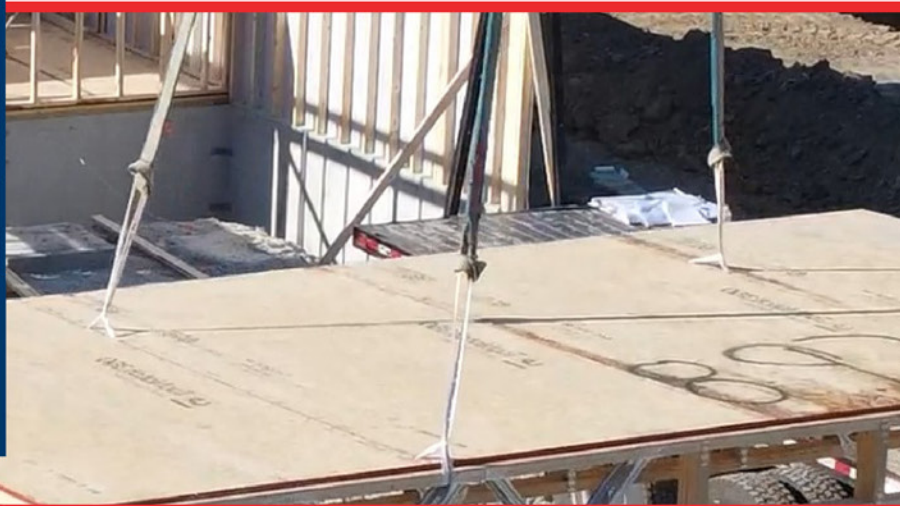
lbs Choker \*750 lbs Basket \*1800 lbs DO NOT EXCEED WORKING LOAD LIMIT BOSS

BOSS's Lifting Loops are manufactured with the same standards of quality, safety, and efficiency that all of our strapping adheres to, with the added experience of our sister company: HEM-Sort Slings.

- LOW-COST
- DISPOSABLE
- SIMPLE TO USE
- RATED & IMPRINTED



Can be used for setting wall panels or floor panels!



See our loops in action:

## Composite Strapping

Printed means BOSS Strapping printed on strap

FLEX indicates flexible coating - better in colder temps

All strapping is packaged 2 rolls per box, 90 coils per pallet.

Item Description	Item #	Linear Strength	System Strength	Linear Feet per Coil	Buckle
5/8" Composite Strap	BC50	1000 lbs	1585 lbs	2788	16mm
5/8" Composite Strap	BC55	1500 lbs	2023 lbs	2000	16mm
3/4" Composite Strap	BC60	1050 lbs	1765 lbs	1968	19mm
3/4" Composite Strap	BC65	1400 lbs	2115 lbs	1640	19mm
3/4" Composite Strap	BC69	1800 lbs	2890 lbs	1640	19mm
1" Composite Strap	BC85	1763 lbs	2755 lbs	1640	25mm
1" Composite Strap	BC86	2314 lbs	4075 lbs	1476	25mm
1" Composite Strap	BC89	2976 lbs	5070 lbs	1312	25mm
1 1/4" Composite Strap	BC105	3637 lbs	6035 lbs	770	32mm

## Galvanized Buckles

Item Description	Item #	Packaging	MM
16mm (5/8") Galvanized Buckle	BUC58G	1000 per Carton; 48 boxes per pallet	16mm
19mm (3/4") Galvanized Buckle	BUC34G	1000 per Carton; 48 boxes per pallet	19mm
25mm (1") Galvanized Buckle	BUC1G	1000 per Carton; 48 boxes per pallet	25mm
32mm (1 1/4") Galvanized Buckle	BUC114G	1000 per Carton; 48 boxes per pallet	32mm

### ALWAYS USE A GALVANIZED BUCKLE WITH COMPOSITE STRAPPING!

Galvanized buckles have superior corrosion resistance properties, which makes them ideal for use with composite strapping that is frequently exposed to moisture or harsh environmental conditions.

Galvanized buckles have a layer of zinc coating that provides excellent corrosion resistance, protecting the buckle from rust and other forms of corrosion. This makes them a better choice for use with composite strapping than other types of buckles that may corrode and fail over time, compromising the security of the load.

## Composite Strapping: Usage and Benefits



- Safer than Steel
  - Strap doesn't break when nicked
- More efficient than PET
  - The buckle increases joint efficiency
- Exceptional printing quality
- Feedability is similar to steel
- Plastic coating resists moisture

### LIGHT DUTY STRAP

#### Common Applications:

- Parts / Boxes on pallets
- Food & Beverage industry
- Plastic piping
- Landscaping



#### Item

BC50

BC60

### STANDARD DUTY STRAP

#### Common Applications:

- Fork on/fork off lumber bundles
- Fork on/fork off composite deck bundles
- Fork on/fork off EWP bundles
- Galvanized parts
- Industrial parts on pallets



#### Item

BC55

BC65

BC85

BC86

### HEAVY DUTY STRAP

#### Common Applications:

- Dumping lumber bundles
- Fork on/fork off large lumber bundles Heavy duty parts
- Aluminum electrical poles
- Transmission towers
- Heavy equipment dealer's parts AAR Approved



#### Item

BC69

BC89

BC105F



Compare  
Woven to  
Composite  
Strapping

### ALWAYS USE A GALVANIZED BUCKLE WITH COMPOSITE STRAPPING!

Using a phosphate-coated buckle with composite strapping can create friction between the buckle and the strapping.

This can cause abrasion and damage to the strapping, reducing its overall strength and potentially compromising the security of the load.

**The friction caused by the coating can cause the strapping to wear and weaken, increasing the risk of load failure.**

# KITS & BUNDLES

THE RIGHT QUANTITIES AT THE RIGHT TIME.

**BEST OVERALL STRAPPING SYSTEM**

**Streamline your order process, control cost, and manage inventory without sacrificing quality with bundles and kits from BOSS Tiedowns & Strapping.**

## BOSS™ Starter Kit

- 1 - 250' Short Coil 3/4 2700 Strap
- 50 - 19mm Phosphate Coated Buckles
- 1 - 150' Short Coil 1-1/2 5400 Strap
- 20 - 32mm Phosphate Coated Buckles
- 1 - MT-1 Manual Tool
- 1 - Flexible Pallet Feeder
- 1 - Klever Cutter Cutting Tool



## BOSS™ Forklift Starter Kit

- Forklift Mounted Dispenser
- 1 - 1650' Coil 3/4 2700 Strap
- 250 - 19mm Phosphate Coated Buckles
- 1 - MT-1 Manual Tool
- 1 - Flexible Pallet Feeder
- 1 - Klever Cutter Cutting Tool



## BOSS™ Driver Kit

- BOSS™ Duffle Bag
- 1 - 250' Short Coil 3/4 2400 Orange Strap
- 50 - 19mm Phosphate Coated Buckles
- 1 - MT-1 Manual Tool
- 1 - Flexible Pallet Feeder
- 1 - Klever Cutter Cutting Tool



# RETURN MANAGEMENT

Easily identify lumber bundles with BOSS Strapping's color-coded strap. The white strapping is for outbound, and orange strap handles returns.

## WORK LIKE A PRO

### Kit Contains

- Duffle Bag
- 1-250' Coil 3/4" Orange Strap 50-19mm
- Buckles
- 1-H22 Ratchet Tensioner Tool 1-Klever
- Cutter Tool

## DRIVER'S KIT



WHITE STRAP OUT

ORANGE STRAP IN

## PROACTIVE RETURNS & INVENTORY MANAGEMENT

- Improves material return process
- Improves percentage of resell-able material
- Improves safety of materials during transport
- Reduces time from return to resell
- Reduces safety issues
- Reduces downtime at job site searching for materials



Learn more  
about the  
Driver's Kit

## PROTECT YOUR TEAM & YOUR BOTTOM LINE

BOSS's strapping is engineered with safety in mind and uses a specific weaving process to meet the challenge of securing your materials safely and efficiently.

- Protect your team from dangerous mishaps.
- Protect your product whether you're transporting across 50 feet or 50 states!
- Protect customers from unreturned stock laying around the yard.
- Protect your product from damage.
- Protect your bottom line by returning products faster!

Having clear policies and procedures in place for handling returned lumber and returning it to stock promptly can help ensure effective inventory management and preserve the quality and value of their lumber.

## ProPacks

Streamline your order process, save warehouse space and control costs with BOSS' ProPacks.



### BOSS ProPack™ Woven

- 16 Coils of Strapping
- 3 Boxes of Buckles

Item #	Break Strength	Buckle
<i>ProPac 58</i>	1500#	5/8"
<i>ProPac 18</i>	1800#	3/4"
<i>ProPac 24</i>	2400#	3/4"
<i>ProPac 27</i>	2700#	3/4"
<i>ProPac 30</i>	3000#	3/4"
<i>ProPac 1-1/4</i>	3900#	1-1/4"
<i>ProPac 1-1/2</i>	5400#	1-1/2"



### BOSS ProPack™ Composite

- 16 Coils of Strapping
- 3 Boxes of Buckles

Item #	System Break Strength	Buckle
<i>ProPac 58C</i>	2023# Break	5/8"
<i>ProPac 34C</i>	2247# Break	3/4"
<i>ProPac 131C</i>	3145# Break	1"
<i>ProPac 139C</i>	3934# Break	1"
<i>ProPac 114C</i>	6035# Break	1-1/4"

**COMPETITIVE FOR FULL STEEL PALLET BUYERS**

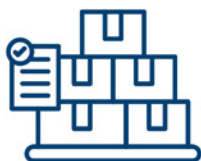


## The **ProPack** Redefines Performance & Efficiency!



### Streamline Your Order Process

- Strapping and buckles in the right quantities all on one pallet. Order one item and get what your yard needs.
- Reorders are simple with the ProPack Program.



### Manage Your Inventory

- **Never run out of strapping!**
- Buckles and strapping are purchased in quantities that run that run out at approximately the same time.



### Control Costs

- Save money buying strapping and buckles together.
- Avoid inflated shipping costs incurred with rush orders by using the ProPack Program.
- Reduce damage to product with strap that flexes the right amount.



### Save Space in Your Warehouse

- Pallets ship flat and are stackable.
- Choose 1 ProPack or a MasterPack that can be easily unbanded for use one at a time! With the ProPack Program- you have what you need when you need it without taking up valuable warehouse space.



### Improve Safety in Your Yard

- BOSS's strapping uses a specific weaving process to attain the safest strap in the industry.
- The stitch used allows BOSS straps to hold tension even if the strap is nicked.

### Take advantage of the MasterPack!

- Open one pallet at a time, as needed. Station a ProPack at strategic points in your yard to minimize travel to banding stations.
- Mix and match strap strengths on different ProPacks while taking advantage of shipping rates with the MasterPack.



# TOOLS, DISPENSERS, & MORE

## EVERYTHING YOU NEED TO USE THE **BEST OVERALL STRAPPING SYSTEM**

### TOOL REPAIR PROGRAM

You can buy tools from anyone, but when you partner with BOSS, you're partnering with a team that understands the importance of an entire efficient system. If your tools don't work, or aren't available- then your team's productivity drops and your profits drop too.



Download our tool repair form or check out our full line of tools.

Send in your damaged tools and let us see if it is more cost-effective to repair or replace the tool. We stock parts for our heavy duty tensioners to reduce the turnaround time on repairs. The process is simple, and the work is done at BOSS.

### CORNER EDGE TOOL

The CET combines the best of all our tools. Using the leverage of the edge, this tool tensions strap quickly and easily.



The simplified design makes the CET easy to use, easy to maintain, and easy to repair.



See it in action

### FORKLIFT MOUNTED DISPENSER

Save time and fuel by avoiding unnecessary trips to banding stations, or waiting in line. The Best Overall Strap is easily mounted on a forklift and still strong enough to safely transport materials across the yard or across the country.



### ALL IN ONE TOOL



**Save time and frustration searching for a tool!**

The Ai1 Tool is durable, lightweight, and versatile.

- It goes where you go, so that you can tension quickly.
- The built-in cutter makes this truly an "all-in-one" solution.
- It's cut from steel, so it's durable.



See it in action

# EQUIP YOUR TEAM WITH THE RIGHT TOOLS

## Tools for Woven & Composite Strap



### MT- 1 Manual Tool

This solid steel tool works with ALL sizes of strap up to 1-1/2".



### H-22

Regular duty strapping tensioner for polyester cord strap up to 3/4".



### H-25

Heavy duty strapping tensioner for polyester cord strap up to 1".



### Ai1 Manual Tool

This solid steel tool works with ALL sizes of strap up to 1-1/2".



### H-26

Heavy duty strapping tensioner for polyester cord strap up to 1-1/2".



### MUL-325

Heavy duty strapping tensioner with special features for ease of use up to 3/4".



### MUL-375

Extra heavy duty cord tensioner that cuts all cord types 3/4" to 1-1/2".



### CET

Extra heavy duty cord tensioner that works with all cord types 3/4" to 1-1/2".



### Portable Dispenser

Great for TRUSS bundling and remote location usage! Use with strap size up to 1-1/2" wide.



### Wheeled Dispenser

Great for conventional banding stations! Use with strap size up to 1-1/2" wide.



### Forklift Mounted Dispensers

Great for Conventional Banding Stations! Use with strap size up to 1-1/2" wide.



## Dispensers



How to Use  
the Pallet  
Feeder Tool

### Pallet Feeder

Item # **FDRTOOL**

This tool makes feeding strap through pallets and under bundles a much faster process.



Use with woven strap sizes up to 1½" wide.  
Great for truss bundling and remote location usage!



### Portable Dispensers

Item # **PD34-3**



### Wheeled Dispensers

Item # **WD (Woven)**

Item # **WDC (Composite)**

Great for conventional banding stations!  
Use with strap sizes up to 1½" wide.



### Forklift Mounted Dispensers

Great for Lean Process point of use storage!  
Use with strap sizes up to 1½" wide.

Item # **HDFLD3-3 (Woven)**

Item # **HDFLD-8 (Composite)**



Item # **F101-3 (Woven)**

Item # **F101-8 (Composite)**

Save time and fuel by eliminating unnecessary trips to banding stations, or waiting in line.

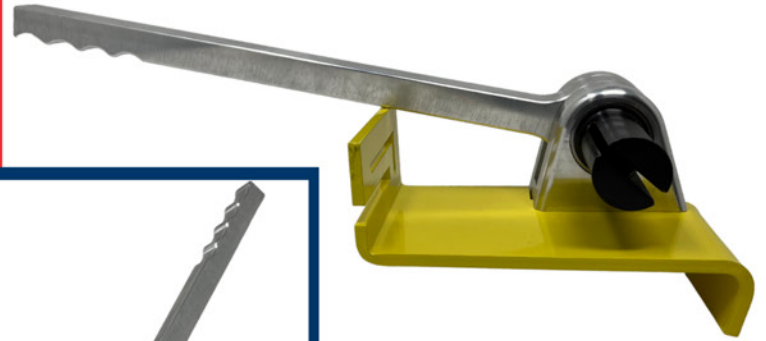
Band lumber loads as you build them to maximize your yard's efficiency!

Free up valuable yard space by eliminating stationary banding stations.



## Corner Edge Tool

With a corner edge tool, you can get more precise control over the amount of tension you apply to the strap. This can be especially helpful when working with delicate or fragile materials.



Learn how to use the CET tool.

### IMPROVED EFFICIENCY

The corner edge tool allows for more efficient strap bundling by providing a smooth, consistent surface for the strap to wrap around. This can save time and effort compared to manually maneuvering the strap around sharp corners or edges.

### REDUCED RISK OF DAMAGE

When securing loads with straps, the edges of the load or the strap can sometimes cause damage or abrasions. A corner edge tool can help reduce the risk of damage by providing a smooth and protected surface for the strap to wrap around. This can help protect the load and the strap itself, increasing the lifespan of both.

### TIGHTER, MORE CONSISTENT TENSION

The corner edge tool produces a tighter and more consistent tension around the load, helping to ensure that it is secure and stable during transportation or storage. This can reduce the risk of shifting or damage during transit, and help prevent accidents or injuries.

### IMPROVED SAFETY

By providing a secure and stable bundle, using a corner edge tool can help increase overall safety during transportation and handling. Properly secured loads are less likely to shift or fall, reducing the risk of accidents or injuries.

### LOWER REPAIR COST

With only 8 pieces total- the corner edge tool is simple to use AND repair!

## Tiedowns and Hardware



1" Tiedown  
Available In Any  
Length w/  
Hardware



2" & 4" Tiedowns  
Available In Any  
Length w/  
Hardware



1" x 14' Ratchet  
w/ Wire Hook



2" Polyester Tiedown w/ Ratchet Flat Hook  
Available In Any Length



2" Polyester Web  
w/ Flat Hook



4" x 30'  
Polyester Web  
w/ Flat Hook



Ratchet  
Assembly w/  
Flat Hook



2" x 30' Polyester Tiedown  
w/ Ratchet Wire Hook



2" Ratchet  
Replacement  
Assembly w/ Any Hook



Ratchet  
Assembly w/  
Any Hook



2" Replacement  
Tiedown Assembly w/  
Chain Anchor



Ratchet  
Assembly w/  
Chain Hook



2" Ratchet  
Tiedown  
Assembly



Ratchet  
Assembly w/ Twisted  
Snap Hook



2" Snap Hooks  
5,000 to 10,000 lbs



Hook For Ratchet  
Buckle w/ Spacer  
5,000 lbs



2" Ratchet  
w/ Snap Hook  
5,000 lbs



1" Ratchet  
3,300 lbs



1-1/2" Light  
Duty Ratchet  
4,000 lbs



2" Short Narrow  
Heavy Duty Ratchet  
10,000 lbs



2" Long Wide  
Handle Ratchet  
10,000 lbs



4" Ratchet  
20,000 lbs

**Tiedowns available in any length: We are the manufacturer!**

## Tiedowns and Hardware



10" Plastic Corner Protector



4" Plastic Corner Protector



2" Wire D Ring  
5,000 lbs



2" Delta Ring  
10,000 lbs



2" Heavy Duty D Ring  
10,000 lbs



4" Forged D Ring  
20,000 lbs



U Bracket For  
Ratchet w/ Chain End  
11,000 lbs



2" Spring Loaded  
"E" END Fitting  
4,000 lbs



2" Cam Buckle  
2,500 lbs



Clevis Grab Hook  
G 43 5/16"



Clevis Grab Hook  
w/ Pearlink  
16,200 lbs



Clevis Grab Hook  
G 70 5/16"



Chain Anchor w/  
3" D Ring  
16,200 lbs



4" Flat Hook  
20,000 lbs



2" Flat Hook  
10,000 lbs



1" Light Duty  
Small Flat Hook



1" Heavy Duty  
Flat Hook



2" Narrow Flat Hook  
5,000 lbs



1" Wire  
Hook 3,000  
lbs



2" Light Duty Wire  
Hook 3,000 lbs



2" Wire  
Hook 10,000  
lbs



3" Wire  
Hook 16,200  
lbs



1" Vinyl Coated S  
Hook 1,200 lbs



Web  
Winder



Oblong Master  
Links



Chain Load Binder  
Fits 5/16" X 3/8"



Winch Bar Painted  
Standard or Combo  
w/ Box



G 70 3/8 x 20'  
Binder Chain



Standard  
Weld on  
Winch



Winch Standard  
Portable w/  
2-set Screws

**Request A Quote For Custom Tiedowns**

SIMPLY THE BEST SOLUTION FOR ALL YOUR NEEDS!



## Lumber & Industrial Lifting Slings

# Custom Industrial Slings Made to Order

Item	Description
81045	3.875" x 8' Silver Printed eye & eye
81046	3.875" x 25' Silver Printed Double Ply eye & eye bundler sling
81047	3.875" x 30' Silver Printed w/H-S end
81048	3.875" x 35' Silver Printed w/H-S end
81049	3.875" x 40' Silver Printed w/H-S end
81050	3.875" x 40' Silver Printed w/T-3 end
81052	3.875" x 50' Silver Printed w/H-S end
81053	3.875" x 50' Silver Printed w/T-3 end
81060	3.875" x 60' Silver Printed w/H-S end
IM-35	3.875" x 35' Silver Printed Standard eye one end, special eye at hook up end
IM-40	3.875" x 40' Silver Printed Standard eye one end, special eye at hook up end
IM-50	3.875" x 50' Silver Printed Standard eye one end, special eye at hook up end

Item	Description
ES30	4" x 30' Lumber Sling w/D-Ring
ES35	4" x 35' Lumber Sling w/D-Ring
ES40	4" x 40' Lumber Sling w/D-Ring
ES40T	4" x 40' Lumber Sling w/Alum Triangle
ES42	4" x 42' Lumber Sling w/D-Ring
ES50	4" x 50' Lumber Sling w/D-Ring
ES50T	4" x 50' Lumber Sling w/Alum Triangle
ES60	4" x 60' Lumber Sling w/D-Ring
ES40IM	4" x 40' Lumber Sling w/Standard eye one end, special eye at hook up end
ES50IM	4" x 50' Lumber Sling w/Standard eye one end, special eye at hook up end

H-S - HEM-SORT Slings patented metal 'D'-ring (greater strength, longer life and safer fitting T-3 end - Aluminum Triangle / IM - Irvington Moore Shorter Sling (length)



# HISTORY, TEAM, & NEWS

## ALL ABOUT THE **BEST OVERALL STRAPPING SYSTEM**



BOSS Tiedowns and Strapping systems and our sister company, HEM-SORT Slings, are manufactured at our factory in Wells, Texas. We have proudly served the lumber industry with woven products for 50 years.

BOSS Tiedowns and Strapping have provided strapping solutions through decades of banding experience in nylon strapping, polyester strapping, webbing, narrow fabrics, customized strapping and several strapping tools.

If you need tiedowns, buckles, poly strapping, lashing, or slings that are heavy-duty, industrial or just for everyday use we have the experience and expertise to solve any strapping problem.

From agricultural applications, construction and development, to manufacturing and shipping companies, our customer service professionals have the experience to put you in the right solution for your operation.

When you choose BOSS Tiedowns and Strapping, you're getting the Best Overall Strapping System available within the industry.

Gain the confidence of safe and secure strapping solutions and accessories engineered with precision and manufactured to the highest standards.



# BOSS TIEDOWNS & STRAPPING TURNS 50!



Warner Bailey



Blake Bailey

## American-Made since 1973

The industry's **B**est **O**verall **S**trapping **S**ystem is turning 50 this year- and it's happening right here in Texas! Experience the difference of partnering with a family-owned, Texas-tough, American-made company!



## 50 YEARS OF:

- QUALITY
- INNOVATION
- SAFETY

## Family Owned & Operated for 3 Generations

In 1973, Warner Bailey observed lumber being scarred and dented as it moved through a sawmill's sorting system. *"There ought to be a better way," he mused.*



Calvin, Blake, & Creed Bailey

That legacy of innovation has continued with Warner's son Blake and BOSS Strapping's numerous safety systems, and commitment to over-producing each strap that leaves the plant.

Rigorous testing and continuous quality improvement aren't just tag lines at BOSS Tiedowns & Strapping: they are measures that the Bailey family insists on in order to protect each person who uses a BOSS product.

# TOP 5 REASONS COMPANIES CHOOSE BOSS TIEDOWNS & STRAPPING

## #1 Proven Performance

With decades of experience, BOSS Tiedowns & Strapping has proven its products are tough enough to perform under pressure.

## #2 Return on Investment (ROI)

ROI is an important measure when considering any purchase. BOSS products return value through increased safety and productivity.

## #3 Increased Productivity

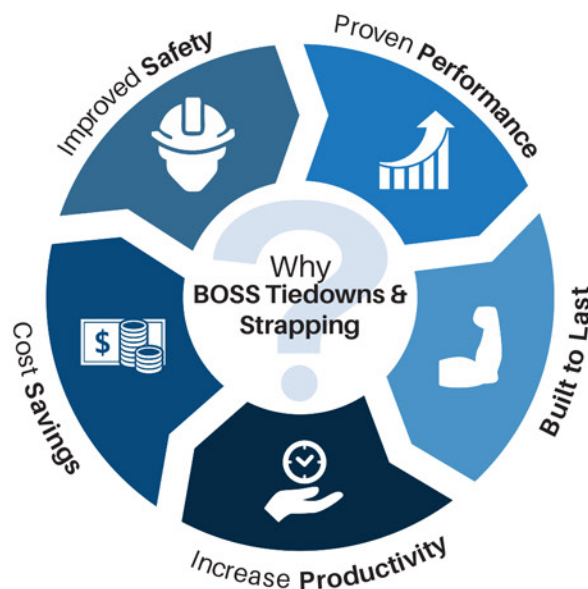
BOSS promotes LEAN Process Improvement to make sure that you are getting the full value out of every dollar invested.

## #4 Cost Savings

Decreased tooling costs, increased safety, and stable pricing all mean BOSS Tiedowns & Strapping is a smarter more cost-effective choice.

## #5 Improved Safety

BOSS Tiedowns & Strapping prides itself on helping make your business safer through the conversion from steel banding to a much smarter strapping alternative.



**Whether you need strapping, lashing, buckles, or tiedowns that are heavy-duty for industrial or just for everyday use BOSS has the experience and expertise to solve any strapping problems: big or small.**

**Get your strapping and tiedown solution:**



**Jeff Tweten**

National Sales Consultant  
jefft@boss-strapping.com



**Mike Kontz**

National Sales Manager  
mikek@boss-strapping.com



**Joy Whitenburg**

Sales & Marketing  
joyw@boss-strapping.com



## Meet the Team



**Blake**



**Calvin**



**Creed**

### Experience & Innovation Combine to Meet Demand

While everyone struggled with supply chain issues the past few years, BOSS partners were able keep supplying their customers. In fact, some of our competitors were reaching out to purchase items from us! How does a family-owned company in Alto, Texas not just survive, but THRIVE in these conditions?

Pairing the experience and knowledge that comes from decades of serving the lumber industry with the innovation and agility needed to weather a rapidly changing world.

---

### Quality Is In Our DNA

We are fortunate to have Blake Bailey still at the helm of BOSS Tiedowns & Strapping making sure that only the highest quality materials are used in the manufacturing of our strap.

That insistence on quality has been passed on to the two oldest Bailey children- Calvin and Creed- who are now overseeing daily operations alongside Blake. And neither of them are content to simply punch in and maintain what dad built.

---

### Innovation & Efficiency Maintain Profitability

Whether its implementing randomized testing on tools that we sell or increasing the frequency of our already stringent pull testing: both Bailey boys are finding ways to keep BOSS the Best Overall Strapping System.

We've improved our storage system, our inventory management processes, and implemented kanbans to maximize our efficiency while keeping our supply where our customers need it to be.

---

### Increased Production Capacity

In the past few years BOSS has added more looms, cutting stations, and manpower.

This year the materials for producing our own buckles will arrive at the plant- giving us even more quality control.



## Meet the Team

### Inventory Forecasting versus Replenishment

When you're managing multiple product lines for your entire area, it's hard enough just to replenish your stock and keep your customers supplied.

#### *What's the difference?*

Inventory forecasting includes replenishment data such as timing, availability and lead time, but it goes a step further and accounts for seasonality, marketing campaigns, and demand fluctuations.

Forecasting demand helps you keep enough product on hand while not wasting valuable storage space. While some companies rely on either trend forecasting or historical data, BOSS uses a combination of all 4 types of forecasting- which helped us (and our partners) stay stocked even with slow supply chains.

.....



**Christi**



**Sami**

## PUT OUR EXPERTS TO WORK FOR YOU!

Your team has enough to do.  
Let our team simplify your orders, manage your inventory, and lock in the best rates.

### Simplify Your Inventory with a Program

- Competitive Pricing
- Managed Inventory
- Priority Shipping Status
- Priority Access to: Tools, Dispensers, and Accessories



**Melissa**

**BOSS Tiedowns & Strapping**  
**PO Box 768**  
**Wells, TX 75976**

Phone: (936) 867-4801

Fax: (866) 702-4802

Online: [BOSS-Strapping.com](http://BOSS-Strapping.com)



Scan Now



Website

© May 2023